

## DEALERSHIP — PRINCESS YACHTS



**Builder:** PRINCESS YACHTS

**Year Built:** 2011

**Model:** Motor Yacht

**Price:** PRICE ON APPLICATION

**LOA:** 95' (28.96m)

**Beam:** 23.16

**Max Draft:** 6' (1.83m)

**Cruise Speed:** 25 Knots Kts. (29 MPH)

**Max Speed:** 28 Knots Kts. (32 MPH)

Our experienced yacht broker, Andrey Shestakov, will help you choose and buy a yacht that best suits your needs **Dealership — PRINCESS YACHTS** from **our catalogue**. Presently, at **Shestakov Yacht Sales Inc.**, we have a wide variety of yachts available on **our sale's list**. We also work in close contact with all the big **yacht manufacturers** from all over the world.

If you would like to buy a yacht **Dealership — PRINCESS YACHTS** or would like help answering any questions concerning purchasing, selling or chartering a yacht, please call **+1(954)274-4435**

# TABLE OF CONTENTS

TABLE OF CONTENTS	2
SPECIFICATIONS	5
Basic Information	5
Dimensions	5
Speed, Capacities and Weight	5
Accommodations	5
Hull and Deck Information	5
Engine Information	5
PHOTOS	6
Salon	6
Salon	6
Salon	6
Salon	6
Dining	6
Dining	6
Galley	7
Galley	7
Galley	7
Galley	7
Stairway	8
Day Head	8
Master Stateroom	8
Master Stateroom	8
Master Stateroom	8
Master Stateroom	8
Master Stateroom	9
Master Stateroom	9
Master Head	9

---

Master Head	9
Master Head	9
VIP Stateroom	9
VIP Stateroom	10
VIP Stateroom	10
VIP Stateroom	10
VIP Stateroom	10
VIP Head	11
VIP Stateroom	11
Guest Stateroom	11
Guest Stateroom	11
Guest Head	12
Twin Guest Stateroom	12
Guest Head	12
Twin Guest Stateroom	12
Lower Helm	13
Lower Helm	13
Lower Helm	13
Lower Helm	13
Lower Helm	13
Lower Helm	13
Helm Station	14
Helm Station	14
Bridge Deck	14
Bridge Deck	14
Bridge Deck	14
Bridge Deck Aft	14
Bridge Deck Aft	15
Bridge Deck Aft	15

---

---

Aft Deck	15
Aft Deck	15
Aft Deck	15
Engine Room	15
Engine Room	16
Engine Room	16
Engine Room	16
Engine Room	16
Crew Head	17
Engine Room	17
Crew Quarters	17
Crew Quarters	17
Aft Profile	18
Crew Quarters	18
Bow Profile	18
Dealership	18
Bow	19
Bow	19
Dealership	19
Dealership	19
Layout	19
CONTACTS	20
Contact details	20
Telephones	20
Office hours	20
Address	20

---

# SPECIFICATIONS

---

## Basic Information

---

**Category:** Motor Yacht

**Model Year:** 2011

**Year Built:** 2011

## Dimensions

---

**LOA:** 95' (28.96mm)

**Beam:** 23.16

**Max Draft:** 6' (1.83mm)

## Speed, Capacities and Weight

---

**Cruise Speed:** 25 Knots Kts. (29 MPH) **Max Speed:** 28 Knots Kts. (32 MPH)

**Fuel Capacity:** 2948 Gal Gallons

## Accommodations

---

**Total Cabins:** 4

**Total Heads:** 5

**Crew Berths:** 3

**Crew Heads:** 1

## Hull and Deck Information

---

**Hull Material:** Fiberglass

## Engine Information

---

**Engines:** 2

**Manufacturer:** MTU

**Engine Type:** Inboard

**Fuel Type:** Diesel

# PHOTOS

**Salon**



**Salon**



**Salon**



**Salon**



**Dining**



**Dining**

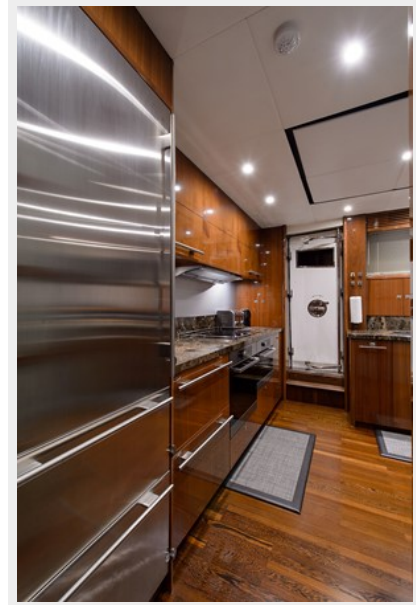




**Galley**



**Galley**



**Galley**



**Galley**



**Stairway**



**Day Head**



**Master Stateroom**



**Master Stateroom**



**Master Stateroom**



**Master Stateroom**





### Master Stateroom



### Master Stateroom



### Master Head



### Master Head



### Master Head



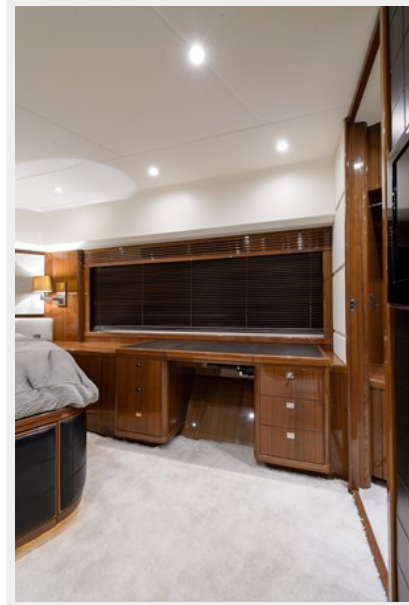
### VIP Stateroom



**VIP Stateroom**



**VIP Stateroom**



**VIP Stateroom**



**VIP Stateroom**



**VIP Stateroom**



**VIP Head**



**Guest Stateroom**



**Guest Stateroom**





**Guest Head**



**Twin Guest Stateroom**



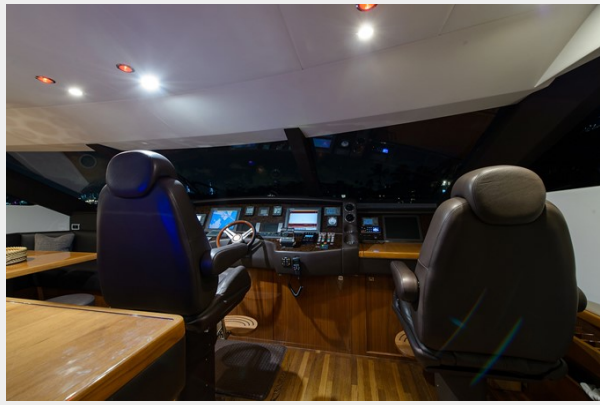
**Guest Head**



**Twin Guest Stateroom**



**Lower Helm**



**Lower Helm**



**Lower Helm**



**Lower Helm**



**Lower Helm**



**Lower Helm**





**Helm Station**



**Helm Station**



**Bridge Deck**



**Bridge Deck**



**Bridge Deck**



**Bridge Deck Aft**



**Bridge Deck Aft**



**Bridge Deck Aft**



**Aft Deck**



**Aft Deck**



**Aft Deck**



**Engine Room**





**Engine Room**



**Engine Room**



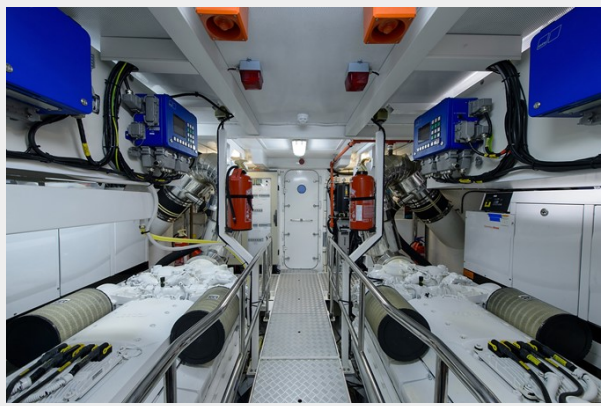
**Engine Room**



**Engine Room**



**Engine Room**



**Crew Head**



**Crew Quarters**



**Crew Quarters**



### Crew Quarters



### Aft Profile



### Bow Profile



### Dealership





**Bow**



**Bow**



**Dealership**



**Dealership**



**Layout**



# CONTACTS

---

Andrey Shestakov, leading yacht broker of the sales department of Shestakov Yacht Sales Inc. Shestakov Yacht Sales Inc., the official representative of the Miami/Fort Lauderdale FL headquarters.

## Contact details

---

Email: **andrey@shestakovyachtsales.com**

Web: [shestakovyachtsales.com/en/](http://shestakovyachtsales.com/en/)

## Telephones

---

USA: **+1(954)274-4435**

## Office hours

---

Monday – Saturday: **9:00 - 21:00** EDT

Sunday: **closed**

## Address

---



Harbour Towne Marina, 850 NE 3rd St, STE 213, Dania, FL 33004