

SHEER BLISS — CATALINA



Builder: CATALINA

Year Built: 1990

Model: Sloop

Price: PRICE ON APPLICATION

Location: United States

LOA: 34' 0" (10.36m)

Beam: 11' 9" (3.58m)

Max Draft: 4' 3" (1.30m)

Our experienced yacht broker, Andrey Shestakov, will help you choose and buy a yacht that best suits your needs **Sheer Bliss — CATALINA** from our catalogue. Presently, at Shestakov Yacht Sales Inc., we have a wide variety of yachts available on our sale's list. We also work in close contact with all the big yacht manufacturers from all over the world.

If you would like to buy a yacht **Sheer Bliss — CATALINA** or would like help answering any questions concerning purchasing, selling or chartering a yacht, please call **+1(954)274-4435**

TABLE OF CONTENTS

TABLE OF CONTENTS	2
SPECIFICATIONS	3
Overview	3
Basic Information	5
Dimensions	5
Speed, Capacities and Weight	5
Accommodations	5
Hull and Deck Information	5
Engine Information	6
PHOTOS	7
CONTACTS	9
Contact details	9
Telephones	9
Office hours	9
Address	9

SPECIFICATIONS

Overview

"Sheer Bliss" is a well maintained 1990 Catalina 34.

Spacious cockpit, open salon, large head and two staterooms offer the comfort and privacy for two couple cruising. The boat design and wing keeled draft provide spirit filled sailing with the ability to enter low water anchorages; perfect for the West Coast of Florida, the Keys and the Islands.

Features:

- Bottom sanded and painted 11/2015
- 30 hp Universal Diesel with low hours
- Flexafold 3 blade prop
- Garmin Chart-plotter
- 2 new anchors: Danforth and 32lb Bruce both with 30' of chain rode.

Boat Name Sheer Bliss

Specs Keel: Wing Dimensions LOA: 34 ft 5 in Beam: 11 ft 9 in Maximum Draft: 4 ft 3 in Bridge Clearance: 46 ft 0 in Engines Engine 1: Engine Brand: Universal Year Built: 1990 Engine Model: M35 Engine Type: Inboard Engine/Fuel Type: Diesel Engine Hours: 1800 Propeller: Folding propeller Drive Type: Jet Drive Engine Power: 30 HP Tanks Fresh Water Tanks: 1 (75 Gallons) Fuel Tanks: 1 (23 Gallons) Holding Tanks: 1 (18 Gallons) Accommodations Number of single berths: 1 Number of double berths: 3 Number of cabins: 2 Number of heads: 1 Electronics Depthsounder Plotter - 182C Garmin Chartplotter VHF Compass - Richie Sails Battened mainsail Furling genoa Rigging Steering wheel Inside Equipment Electric bilge pump Battery charger Marine head Oven Electrical Equipment Shore power inlet - 120V Electrical Circuit: 110V Outside Equipment/Extras Cockpit table Cockpit shower Radar reflector Cockpit cushions Swimming ladder Covers Bimini Top Mainsail cover

Accommodations

As you enter the cabin via the center companionway you will notice the openness of this vessel, due to beam which is close to 12', it delivers the impression of a much larger boat.

The head is located on the port side next to the companionway steps. Opening the door your view a larger than expected head. Moving down the port side you'll encounter the chart table with the electrical panel, Hanging above the table is the boat VHF radio; easy access from both the salon and the cockpit.

Forward of the chart table is a single berth lounge. Next is the doorway to the V - Berth. the berth is large and on the port side is a set of drawers while on the other side there is a hanging closet.

Leaving the V - Berth and heading back on the starboard side you'll encounter a U shape settee that easily seats 6 and can be converted into a double berth.

Aft of the Settee is the "L" shape galley with it's two deep stainless steel sinks and two burners propane stove/ oven combo.

Behind the galley is the doorway to the aft stateroom. This berth area is very roomy.

Electronics

- Garmin Chart-plotter
- VHF Radio
- depth gauge

Galley

- Double Deep Stainless Steel Sinks
- 2 burner propane stove/oven combo

Sails & Rigging

- Mail Sail
- Furling Genoa

Ground Tackle

- 32 lbs Bruce Anchor with 30' of chained rode
- Danforth Anchor with 30' of chained rode

Broker's notes

If you are looking for a boat that will provide you the freedom to cruise the Florida coast, Key and islands and do it in comfort you must see this boat. The cockpit is design for those long week cruises with plenty of space, an walk thru transom and a propane grill. With the two staterooms large berths arrangement provides comfort, privacy and allows the salon to stay a salon.

Complete bottom job was done and 11/13 and included barrier coats to help prevent future blisters and then haul and painted in 2015. Low maintenance external Teak finish.- It only requires six hours twice a year to maintain it in tiptop shape Heer Bliss has new freshwater bilge shower sump and engine fresh water pumps It has excellent ventilation with six opening ports three hatches and a wind scoop The boat has a cockpit shower as well as a shower in the head and a new head. Standard rig allows it to go under 55 foot bridges As the owner is getting out of boating the boat comes complete with docking gear kitchen gear custom towels and bedding

beach gear. This boat is very well-maintained

Basic Information

Category: Sloop

Sub Category: Sloop

Model Year: 1990

Year Built: 1990

Country: United States

Dimensions

LOA: 34' 0" (10.36m)

Beam: 11' 9" (3.58m)

Max Draft: 4' 3" (1.30m)

Clearance: 46' 0" (14.02m)

Speed, Capacities and Weight

Water Capacity: 75 Gallons

Holding Tank: 18 Gallons

Fuel Capacity: 23 Gallons

Accommodations

Total Cabins: 2

Total Berths: 4

Total Heads: 1

Hull and Deck Information

Hull Material: Fiberglass

Engine Information

Engines: 1

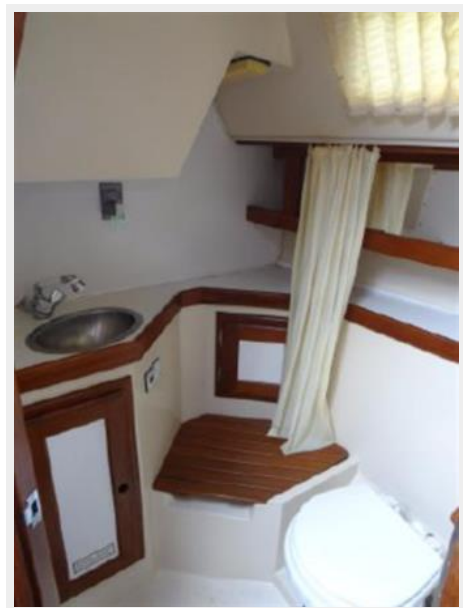
Manufacturer: Universal

Model: M35

Engine Type: Inboard

Fuel Type: Diesel

PHOTOS





CONTACTS

Andrey Shestakov, leading yacht broker of the sales department of Shestakov Yacht Sales Inc. Shestakov Yacht Sales Inc., the official representative of the Miami/Fort Lauderdale FL headquarters.

Contact details

Email: andrey@shestakovyachtsales.com

Web: shestakovyachtsales.com/en/

Telephones

USA: +1(954)274-4435

Office hours

Monday – Saturday: **9:00 - 21:00** EDT

Sunday: **closed**

Address



Harbour Towne Marina, 850 NE 3rd St,
STE 213, Dania, FL 33004