

## BEYOND THE SEA — FREEDOM YACHTS



**Builder:** FREEDOM YACHTS

**Year Built:** 1984

**Model:** Aft Cockpit

**Price:** PRICE ON APPLICATION

**Location:** United States

**LOA:** 32' 0" (9.75m)

**Beam:** 12' 4" (3.76m)

**Min Draft:** 4' 11" (1.50m)

Our experienced yacht broker, Andrey Shestakov, will help you choose and buy a yacht that best suits your needs **Beyond the Sea — FREEDOM YACHTS** from our catalogue. Presently, at Shestakov Yacht Sales Inc., we have a wide variety of yachts available on our sale's list. We also work in close contact with all the big yacht manufacturers from all over the world.

If you would like to buy a yacht **Beyond the Sea — FREEDOM YACHTS** or would like help answering any questions concerning purchasing, selling or chartering a yacht, please call **+1(954)274-4435**

---

# TABLE OF CONTENTS

---

TABLE OF CONTENTS	2
SPECIFICATIONS	3
Overview	3
Basic Information	3
Dimensions	3
Speed, Capacities and Weight	4
Accommodations	4
Hull and Deck Information	4
Engine Information	4
DETAILED INFORMATION	5
Accommodations & Layout	5
Galley and Dinette	5
Mechanical	5
Sails & Rigging	6
Electronics & Navigation	6
Deck & Hull	6
Electrical	7
Disclaimer	7
Exclusions	7
Disclaimer	8
PHOTOS	9
CONTACTS	16
Contact details	16
Telephones	16
Office hours	16
Address	16

---

# SPECIFICATIONS

---

## Overview

---

- Shows like a much newer boat!
- Spacious 2 stateroom layout and luxurious accommodations.
- Easy sail handling and good sailing performance.
- Free standing carbon fiber spar with self tending staysail with lines to cockpit and an electric winch.
- NEW Doyle Sails and Stackpack (2013)
- Yanmar 3GM30F 27 hp engine (2003), 285 hours! fully serviced (2017)
- Boss fuel system (2012)
- 3 bladed feathering Maxi prop (2012)
- Raymarine C-80 Chartplotter, Radar on stern post,
- Autopilot on updated pedestal and navpod (2007)
- Electric winch (2015)
- (3) New gel batteries (2017)
- New Interior upholstery in salon (2012)
- New upholstery in both staterooms (2017)
- Shoal draft version 4'11", ICW friendly 49' bridge clearance
- Full cockpit enclosure
- Full boat cover for off season storage
- Central reverse cycle Air conditioning
- Tall 6'3" headroom
- Very well maintained!!
- Spares and service manuals

## Basic Information

---

**Category:** Aft Cockpit

**Sub Category:** Daysailer

**Model Year:** 1984

**Year Built:** 1984

**Country:** United States

## Dimensions

---

**LOA:** 32' 0" (9.75m)

**Beam:** 12' 4" (3.76m)

**Min Draft:** 4' 11" (1.50m)

---

## Speed, Capacities and Weight

---

**Displacement:** 8950 Pounds

**Water Capacity:** 46 Gallons

**Fuel Capacity:** 32 Gallons

---

## Accommodations

---

**Total Cabins:** 2

---

## Hull and Deck Information

---

**Hull Material:** Fiberglass

---

## Engine Information

---

**Manufacturer:** Yanmar

**Model:** 3GM30F

**Engine Type:** Inboard

**Fuel Type:** Diesel

---

# DETAILED INFORMATION

---

---

## Accommodations & Layout

---

- Teak and holly sole
- Keyhole entry bulkhead adds charm and character
- Teak bulkheads and cabinets
- New light blue microfiber upholstery in salon (2012)
- New upholstery in both staterooms (2017)
- Dining table with unique compass rose accent
- Circular settee and bench settee with arm rests opposite
- Table lowers to make additional berth
- Large awartship berth in aft cabin
- Private V berth forward with cabinet storage
- L shaped Galley is open to the salon
- Stand up Nav Desk/Chart table with spares and storage underneath
- Private head and shower (new head never used)
- Reverse cycle air conditioning
- Opening hatches, ports and dorades provides excellent ventilation

---

## Galley and Dinette

---

- Deep top loading Adler Barbour Cold machine refrigeration with remote temperature gauge
- Butcher block top over refrigerator and sinks
- Kenyon propane 2 burner stove and oven
- (2) 10# propane bottles
- Double SS sink
- Pressure water system with accumulator tank

---

## Mechanical

---

- (2003) Yanmar 3GM30F 27hp engine, 485 hours
- 3 bladed feathering Maxi Prop
- (2017) Engine service: new exhaust elbows, mixing elbow, heat exchanger, thermostat, all cooling hoses, sea water strainer and raw water pump
- Kanzai transmission
- Fresh water cooled
- (2017) Dynamat engine insulation replacement
- Boss fuel filter system (2012)
- Bronze thru hulls and seacocks
- 16,000 btu Cruisair reverse cycle air conditioning

- Jabsco Fresh water pump
- Raritan 6 gal hot water heater 110V or heat exchanger
- Graco manual head (2016) never used
- Y valve and holding tank
- Rule 2000 automatic bilge pump
- Plastimo manual pump

---

## Sails & Rigging

---

- Carbon fiber freestanding mast and boom
- Strong sailtrack and slide system
- New Doyle sails 2013
- Fully Battened main with stackpack and lazy jacks
- Rigid boom vang
- Self tending club footed hank on Staysail
- Spinakker pole
- Spinakker
- #40 Electric winch
- (2) ST Primary winches
- #21 Barient winch

---

## Electronics & Navigation

---

- Updated 2008
- Raymarine C80 Chartplotter GPS
- Radar 2kw on radar pole
- Raymarine 4000+ wheel pilot Autopilot
- Standard Horizon VHF R
- ST60 Depth, Wind
- Ritchie powerdamp compass
- Sony CDX Stereo system
- XM Radio
- Bose speakers
- 15" Digital TV (2016)
- Antenna on top of mast
- Raymarine C series display
- Satelite Radio antenna

---

## Deck & Hull

---

- Danforth 22# Anchor and 175' rode

- Dodger and bimini with connector piece and full eisenglass enclosure on SS frame
- Steering pedestal with Nav pod and cockpit table
- Curved cockpit seating
- Cockpit cushions (2012)
- Teak helm seat
- Comfortable seating on cockpit coamings
- beamy boat with wide walkarounds and no stays for easy walkaround access
- Teak handrails inboard on cabin top
- SS stern rail
- Swim ladder
- Edson heavy duty dingy rail hanging system
- Edson outboard motor mount
- Outboard lift
- Fairlough custom full boat cover with aluminum piping frame for off season storage
- Docklines and fenders
- 4'11" shoal draft version
- fin keel w/ spade rudder
- lead encapsulated keel
- last bottom paint 2012, recent diver

---

## Electrical

---

- (3) new Group 27 gel batteries (2017)
- Guest battery switch
- Statpower True Charge 40+
- 40 amp battery charger
- 30 amp shore power
- 50' shore power cord
- 12V AC and 110V DC system

---

## Disclaimer

---

The Company offers the details of this vessel in good faith but cannot guarantee or warrant the accuracy of this information nor warrant the condition of the vessel. A buyer should instruct his agents, or his surveyors, to investigate such details as the buyer desires validated. This vessel is offered subject to prior sale, price change, or withdrawal without notice.

---

## Exclusions

---

Owner's personal belongings.

---

## Disclaimer

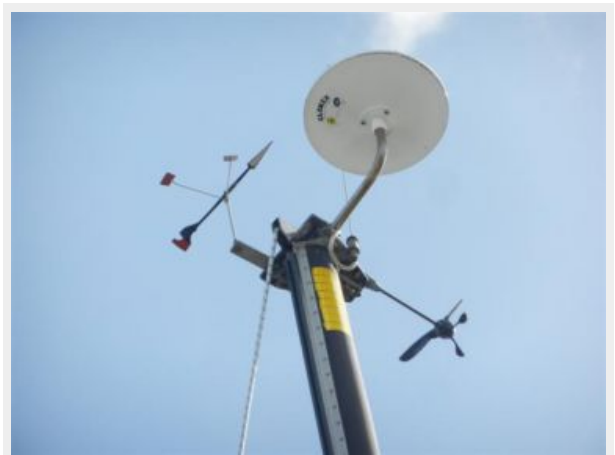
---

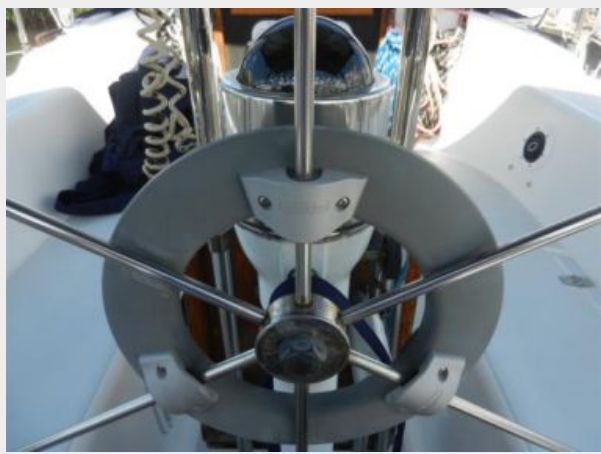
The Company offers the details of this vessel or yacht in good faith but cannot guarantee or warrant the accuracy of this information nor warrant the condition of the vessel. A buyer should instruct his representatives, agents, or his surveyors, to investigate such details as the buyer desires validated. This vessel or yacht is offered subject to prior sale, price change, or withdrawal without notice.

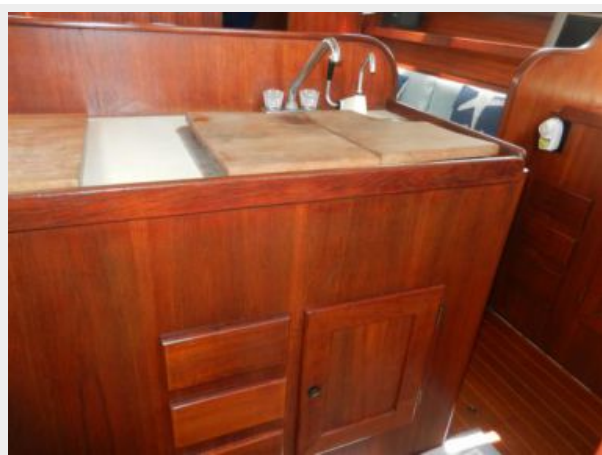
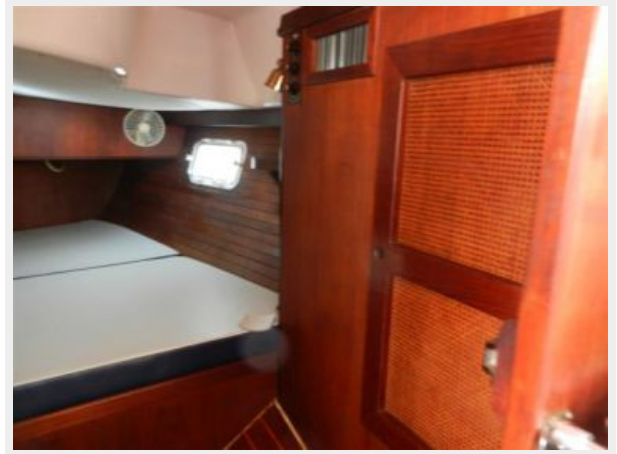


# PHOTOS

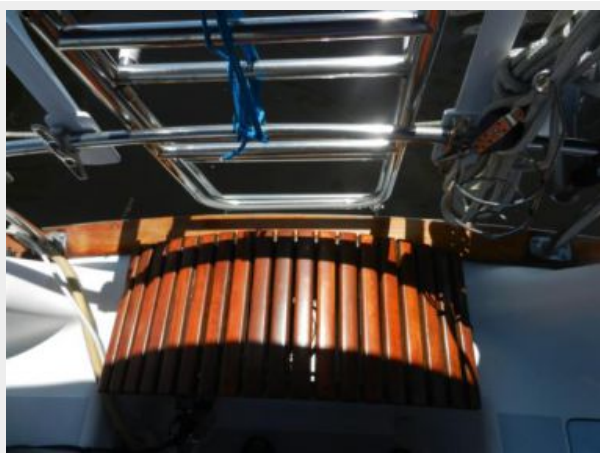


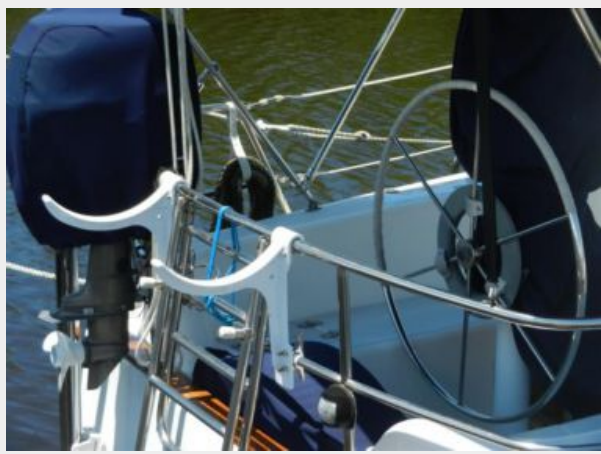












# CONTACTS

---

Andrey Shestakov, leading yacht broker of the sales department of Shestakov Yacht Sales Inc. Shestakov Yacht Sales Inc., the official representative of the Miami/Fort Lauderdale FL headquarters.

## Contact details

---

Email: [andrey@shestakovyachtsales.com](mailto:andrey@shestakovyachtsales.com)

Web: [shestakovyachtsales.com/en/](http://shestakovyachtsales.com/en/)

## Telephones

---

USA: +1(954)274-4435

## Office hours

---

Monday – Saturday: **9:00 - 21:00** EDT

Sunday: **closed**

## Address

---



Harbour Towne Marina, 850 NE 3rd St,  
STE 213, Dania, FL 33004