

GARUDA — NAUTOR



Builder: NAUTOR

Year Built: 1986

Model: Cruising Sailboat

Price: PRICE ON APPLICATION

Location: Spain

LOA: 102' 0" (31.09m)

Beam: 24' 0" (7.32m)

Min Draft: 10' 0" (3.05m)

Max Draft: 0' 0" (0.00m)

Cruise Speed: 12 Kts. (14 MPH)

Max Speed: 14 Kts. (16 MPH)

Our experienced yacht broker, Andrey Shestakov, will help you choose and buy a yacht that best suits your needs **GARUDA — NAUTOR** from our catalogue. Presently, at Shestakov Yacht Sales Inc., we have a wide variety of yachts available on our sale's list. We also work in close contact with all the big yacht manufacturers from all over the world.

If you would like to buy a yacht **GARUDA — NAUTOR** or would like help answering any questions concerning purchasing, selling or chartering a yacht, please call **+1(954)274-4435**

TABLE OF CONTENTS

TABLE OF CONTENTS	2
SPECIFICATIONS	3
Overview	3
Basic Information	3
Dimensions	3
Speed, Capacities and Weight	3
Accommodations	4
Hull and Deck Information	4
Engine Information	4
DETAILED INFORMATION	5
Full Specification	5
Exclusions	6
Disclaimer	6
PHOTOS	7
CONTACTS	13
Contact details	13
Telephones	13
Office hours	13
Address	13

SPECIFICATIONS

Overview

Ron Holland and Jon Bannenberg teamed up to design one of the most interesting sailing yachts of this size. A state of the art high performance sailing yacht with a reinforced Fibre/Carbon Kevlar hull for extensive worldwide cruising, built by Nautor Swan to the highest standard.

Total refit in MB92, Barcelona, October 2008 including new teak deck, pulled mast, hull and superstructure. Further refits of many areas and systems between 2014 and 2017

Basic Information

Category: Cruising Sailboat

Model Year: 1986

Year Built: 1986

Refit Year: 2016

Country: Spain

Vessel Top: Open W/Bimini Top

Dimensions

LOA: 102' 0" (31.09m)

Beam: 24' 0" (7.32m)

Min Draft: 10' 0" (3.05m)

Max Draft: 0' 0" (0.00m)

Speed, Capacities and Weight

Cruise Speed: 12 Kts. (14 MPH)

Cruise Speed RPM: 1500 Kts.

Max Speed: 14 Kts. (16 MPH)

Max Speed RPM: 2200 Kts.

Gross Tonnage: 165 Pounds

Water Capacity: 3500 Gallons

Fuel Capacity: 7000 Gallons

Accommodations

Total Cabins: 3

Sleeps: 6

Total Heads: 3

Crew Cabin: 2

Crew Berths: 3

Crew Sleeps: 3

Crew Heads: 1

Hull and Deck Information

Hull Material: Kevlar Composite

Engine Information

Manufacturer: MTU

Model: V12 550 BHP

DETAILED INFORMATION

Full Specification

Ron Holland and Jon Bannenberg teamed up to design one of the most interesting sailing yachts of this size. A state of the art high performance sailing yacht for extensive worldwide cruising, built by Nautor Swan to the highest standard.

Total refit in MB92, Barcelona, October 2008 including new teak deck, pulled mast, hull and superstructure.

CONSTRUCTION Hull Carbon /Kevlar composite Superstructure Carbon /Kevlar composite
 Decks Teak MACHINERY Main engines MTU V12 550 BHP Generators Auxiliary - MTU 30
 (11000 hrs July 2017) Cruising – MTU 50 (9000 hrs July 2017) Electrical system 24v/220v/380v
 Batteries 1000 AH Service/ 500 AH Radios/300 AH starting New 2016 Propeller Hundested VP5
 New 2015 Bowthrusters Vetus New 2015 Keel Fixed Keel (3.05 minimum depth)
 ANCILLARY MACHINERY Fuel Capacity 7,000 litres/1,850 gal Water Capacity 3,500 litres/924
 gal Air conditioning Condaria reverse cycle Toilet system Electric flush – New 2015
 Watermakers Heating System 2 x HEM 4500 l-180 gal/day – New Membrane Condaria
 Reverse Cycle SAILING EQUIPMENT Mast Rondal (Hydraulic Furling) Furling Rondal (main,
 genoa, jib) Sails Main, Genoa 110, Genoa 1, Jib, Staysail, Trysail (All NEW DOYLE 2014)
 DECK MACHINERY / EQUIPMENT Passerelle Hydraulic Anchor windlass Lofrans Boarding
 ladder All winches fully serviced (stripped and rebuilt) 2015 Manual Winches – Primary 2
 Lewmar 120, 3 speed self-tailing, hydraulic Winches - Secondary: 2 Lewmar 110, 3 speed self-
 tailing, hydraulic Winches - Mainsheet: 1 Lewmar 110, 3 speed self-tailing, hydraulic
 Winches Traveller tag lines: 2 Lewmar 55, 3 speed self-tailing manual Winches - Halyards: 1
 Lewmar 70, hydraulic 2 Lewmar 70, manual 1 Lewmar 88, hydraulic Winches - Utility: 2 Lewmar
 90, 3 speed steel self-tailing Winches -Topping Lift/Fore: 2 Lewmar 55, self-tailing NAVIGATION
 / COMMUNICATION EQUIPMENT Radars Simrad 2014 - Colour radar at Nav Station with 4'
 scanner, RA-24 radar alarm and colour monitor in cockpit and forward (Original) Plotter Simrad -
 2014 Autopilot Simrad - 2014 SSB Furuno/Skanti TRP-8258S radiotelephone New 2015 All
 B&G is connected to SIMRAD from 2105 Echosounder B & G Hercules with 2 transducers New
 2015 Furuno and Simrad fishfinder Electronics B & G Hercules System 290 Pack 2 B & G 190/F
 50 KN wind speed B & G 190/E 20 KN boat speed B & G 190/D 45 degrees magnetic direction
 SIMRAD NNS 12 colour monitor in cockpit New 2015 Sonos 2015 Satellite TV Sytem Tracvision
 and Samsung New 2015 SAFETY EQUIPMENT Liferaft 2 x Class A Arimar 8 persons - 2017
 Fire extinguishers Automatic Halon system in engine room, various manual extinguishers
 Service 2015 Tenders Caribe 4.50m Yamaha 40hp - 2017 ENTERTAINMENT T.V. Samsung
 Smart TV – LED New 2015 Video Sony and Grundig New 2015 Stereo Sony, in saloon and
 owner's stateroom New 2015 ACCOMMODATION Accommodation 3 cabins for 6 guests Owner
 Very Large stateroom with office and double bed Guests 2 staterooms with single beds Crew 2
 cabins, seperate crew mess GALLEY Fridge 2 Siemens - NEW 2017 Freezer Stove/Oven

Siemens New 2017 Smeg Induction Mew 2015 Washing machine Siemens Dryer Siemens Dishwashers LG new 2015 Steam Oven Miele Trash conductor Yes Icemaker Yes
ADDITIONAL INFORMATION New Sails – 2014 All winches repaired and renewed - 2015 All Navigation system Completely renewed - 2015 All fridges new 2017 All interior wood renewed 2014-2017 All covers and mattresses replaced 2015 Underfoot – 2015 LED lighting – 2015 Fire fighting System in Engine Room – 2014 Oven and Sink in Galley – 2015 New TV's – 2015 LED lighting on deck - 2015

Exclusions

Owner's personal belongings.

Disclaimer

The Company offers the details of this vessel or yacht in good faith but cannot guarantee or warrant the accuracy of this information nor warrant the condition of the vessel. A buyer should instruct his representatives, agents, or his surveyors, to investigate such details as the buyer desires validated. This vessel or yacht is offered subject to prior sale, price change, or withdrawal without notice.

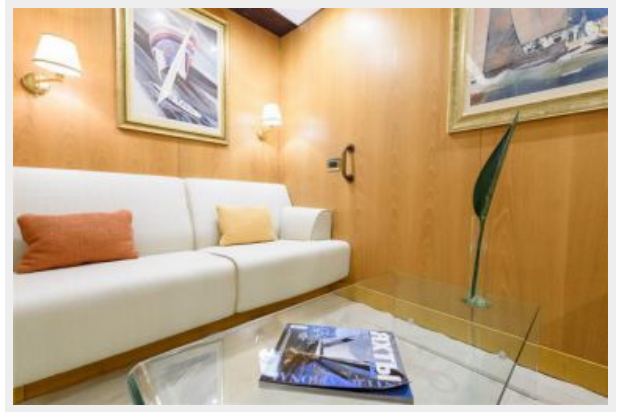
PHOTOS

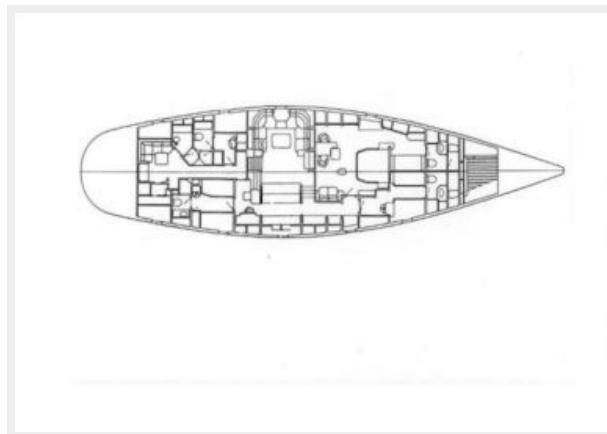












CONTACTS

Andrey Shestakov, leading yacht broker of the sales department of Shestakov Yacht Sales Inc. Shestakov Yacht Sales Inc., the official representative of the Miami/Fort Lauderdale FL headquarters.

Contact details

Email: andrey@shestakovyachtsales.com

Web: shestakovyachtsales.com/en/

Telephones

USA: +1(954)274-4435

Office hours

Monday – Saturday: **9:00 - 21:00** EDT

Sunday: **closed**

Address



Harbour Towne Marina, 850 NE 3rd St,
STE 213, Dania, FL 33004