

FIDELIO — MATTHEISSEN & PAULSEN



Builder: Mattheissen & Paulsen

Year Built: 1956

Model: Classic Yacht

Price: PRICE ON APPLICATION

Location: United States

LOA: 38' 8" (11.79m)

Beam: 11' 3" (3.43m)

Min Draft: 3' 11" (1.19m)

Max Draft: 7' 4" (2.24m)

Our experienced yacht broker, Andrey Shestakov, will help you choose and buy a yacht that best suits your needs **FIDELIO — Mattheissen & Paulsen** from our catalogue. Presently, at Shestakov Yacht Sales Inc., we have a wide variety of yachts available on our sale's list. We also work in close contact with all the big yacht manufacturers from all over the world.

If you would like to buy a yacht **FIDELIO — Mattheissen & Paulsen** or would like help answering any questions concerning purchasing, selling or chartering a yacht, please call **+1(954)274-4435**

TABLE OF CONTENTS

TABLE OF CONTENTS	2
SPECIFICATIONS	4
Overview	4
Basic Information	4
Dimensions	4
Speed, Capacities and Weight	4
Accommodations	5
Hull and Deck Information	5
DETAILED INFORMATION	6
Accommodations	6
Construction	6
Mechanical	6
Electrical	7
Electronics	7
Spars and Rigging	7
Sails	8
Deck Gear	9
Safety	10
Exclusions	11
Disclaimer	11
PHOTOS	12
FIDELIO Under Spinnaker	12
Port Tack Reach	12
Starboard Tack Beating	12
Port Tack Reach	12
Running Along Maine's Classic Coastline	12
Running With All Her Canvas	12
Spacious Cockpit For Lounging And Sail Handling	13

Gleaming At The Dock	13
Handmade Steering Wheel & Cockpit Cushions	13
Fantail Deck	13
New Deck Hardware & Winches	13
Classic Handmade Deck Hardware	13
Classic Handmade Deck Hardware	14
Foredeck & Classic Dorades	14
Large Saloon & Wood Burning Stove	14
Foredeck & Classic Dorade	14
Galley & Gimbaled Stove	15
Large Saloon & Folding Table Looking Aft	15
Galley & Custom Sink Cutting Board	15
Chill Box & Navigation Station	15
Forward Berths	16
Head	16
Wood Burning Stove	16
CONTACTS	17
Contact details	17
Telephones	17
Office hours	17
Address	17

SPECIFICATIONS

Overview

Want to go classic sailing? FIDELIO is the boat for you. A "turn key" yacht, she has received the best of care from Rockport Marine, Narragansett Shipwrights and LMI. Her sail and equipment inventory are huge and her race record proves her performance. If you want to compete on the Classic Circuit or just go cruising you could not find a better boat than this beautiful sistership to the three time Newport-Bermuda Race Winner Finisterre. The owner is retiring from racing and has reduced the price to attract a buyer this spring.

Basic Information

Category: Classic Yacht

Sub Category: Cruising Sailboat

Model Year: 1956

Year Built: 1956

Country: United States

Vessel Top: Open W/Bimini

Cockpit: Yes

Dimensions

LOA: 38' 8" (11.79m)

LWL: 27' 6" (8.38m)

LOD: 38' 8" (11.79m)

Beam: 11' 3" (3.43m)

Min Draft: 3' 11" (1.19m)

Max Draft: 7' 4" (2.24m)

MFG Length: 38' 8" (11.79m)

Speed, Capacities and Weight

Displacement: 18640 Pounds

Accommodations

Total Cabins: 2

Total Berths: 6

Sleeps: 6

Total Heads: 1

Hull and Deck Information

Hull Material: Wood

Deck Material: Wood

Hull Configuration: Centerboard

Hull Color: White

Hull Finish: Stainless Steel

Hull Designer: Sparkman & Stephens

Exterior Designer: Sparkman & Stephens

Interior Designer: Sparkman & Stephens

DETAILED INFORMATION

Accommodations

Aft cockpit with wheel forward so helmsman is sitting in same spot as if he was using a tiller which allows crew room to operate winches. Center line companionway leads down steps over engine access to traditional main cabin with galley sink and original gimbal stove converted to LPG to port and refrigerator/navigation desk to starboard. Settee berths port and starboard in main salon that side out when in use. Upper berth to port and starboard upper converted to shelving. Center line gimbal table over centerboard box. Centerboard cable comes up through stainless grab post and across overhead to winch on aft side of cabin house. Soapstone stove at forward end of main salon with polished stainless chimney to deck fitting for Charlie Noble. The head is just forward to port with original sink and pump, updated Wilcox head and plenty of storage. Hanging locker opposite head and comfortable V berths forward. Finish is white bulkheads and overhead with bright finished mahogany trim including battens on underside of white deck beams. Cabin sole is teak and holly with matte finish. All finishes are in excellent condition.

Construction

Keelson and 8 lower planks replaced Fame ends replaced from engine beds forward to V berth area with laminated white oak scarfed onto upper frame with 16:1 taper

Entire boat refastened

Deck painted by Hinckley in 2017

Hull painted by Hinckley 2017

Varnish in excellent condition and coated in 2017

Racing bottom painted in 2017

Mechanical

Yanmar 3JH5E 39 hp (2011) 500 hrs

New engine beds and pan

Max Prop New 2011 5 Gal Hot water heater 12 V Sea Frost Refrigeration

Racor filter

Computer charging system for batteries

New engine controls in cockpit

Pressure water system

Salt water wash down system

Electric bilge pump

Electrical

BEP Panel 2010 12v/110v

2 group 31 Life Line House Bank

1 AGM Start battery

30 Amp shore power cord

True Charge 20 Amp battery charger

110 outlets

Electronics

Garmin 4208 Radar/XM

Icom 504 VHF

Pioneer Stereo

B&G H3000 Sailing Instruments

B&G H 3000 Auto pilot

USB port at nav desk

Spars and Rigging

Bright finished, hollow sitka spruce spars with stainless 1 x 19 wire rigging. Both in excellent condition.

Adjustable Backstay- wire (classic racing) spectra (PHRF)

Harken roller furler

2-#28 Barent Self tailing primaries winches in cockpit

2-#28 Barent Secondary winches in cockpit

2-Harken 35 self-tailing main sheet winches

1-#6 Lewmar winch on mizzen mast

2-#35 Harken self-tailing winches on main mast

Reaching Strut

Spin Pole, wood

Complete set of running rigging with spares

Bamboo shroud rollers

Jib sheet tracks on toe rail

#3 jib track alongside cabin house at shrouds (2017)

Sails

North Sails 2015

Radian Main

Radian Mizzen

Radian 160%

Radian 155%

Radian 110%

2S-2

3A

North Sails 2013

Radian 160%

Mizzen Staysail Reacher

Genoa Staysail w/ furler

North Sails 2011

Crosscut Main

Crosscut Mizzen

Crosscut Light `150%

Crosscut Med/heavy 150%

Crosscut Blade

Crosscut Jib Top

Crosscut Downwind 150%

North Sails 2010

Radian Maine

Radian Mizzen

Radian 160%

A2

2S

Mizzen Staysail VMG

Others

Bohdell Main

Bohdell Mizzen

Cruising Spin with snuffer

Original Sails

Deck Gear

Pram dinghy (original) with chocks on cabin top

Boat hook 8' with chocks on cabin top

Mahogany steering wheel

Stainless steel wheel for racing

Cockpit awning with side flaps for sun shield

Full dodger across aft end of cabin house

Small companionway dodger for racing

Cockpit cushions

Canvas covers for wheel and binnacle

Canvas covers for mid and forward deck hatches that allow hatch to open

Canvas covers for 4 dorade vent boxes.

Dock Lines

4 Inflatable Fenders

2 Fender Boards (original)

Spare Halyards

Spare Sheets

Safety

Double life lines (upper plastic cover wire, lower spectra)

Emergency Tiller

Life Sling

8 Inflatable life jackets/ harness

Flares

3 Fire Extinguishers

Manual Gusher bilge pump

Exclusions

Owner's personal belongings.

Disclaimer

The Company offers the details of this vessel or yacht in good faith but cannot guarantee or warrant the accuracy of this information nor warrant the condition of the vessel. A buyer should instruct his representatives, agents, or his surveyors, to investigate such details as the buyer desires validated. This vessel or yacht is offered subject to prior sale, price change, or withdrawal without notice.

PHOTOS

FIDELIO Under Spinnaker



Port Tack Reach



Port Tack Reach



Starboard Tack Beating



Running Along Maine's Classic Coastline



Running With All Her Canvas



Gleaming At The Dock



Spacious Cockpit For Lounging And Sail Handling



Fantail Deck



Handmade Steering Wheel & Cockpit Cushions



New Deck Hardware & Winches



Classic Handmade Deck Hardware



Classic Handmade Deck Hardware



Foredeck & Classic Dorades



Foredeck & Classic Dorade



Large Saloon & Wood Burning Stove



Large Saloon & Folding Table Looking Aft



Galley & Gimbaled Stove



Galley & Custom Sink Cutting Board



Chill Box & Navigation Station



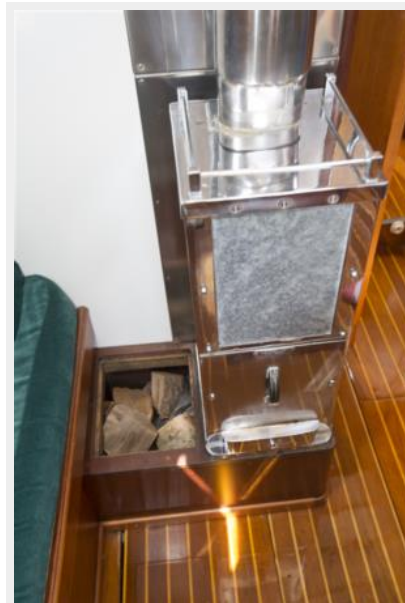
Forward Berths



Head



Wood Burning Stove



CONTACTS

Andrey Shestakov, leading yacht broker of the sales department of Shestakov Yacht Sales Inc. Shestakov Yacht Sales Inc., the official representative of the Miami/Fort Lauderdale FL headquarters.

Contact details

Email: **andrey@shestakovyachtsales.com**

Web: shestakovyachtsales.com/en/

Telephones

USA: +1(954)274-4435

Office hours

Monday – Saturday: **9:00 - 21:00** EDT

Sunday: **closed**

Address



Harbour Towne Marina, 850 NE 3rd St,
STE 213, Dania, FL 33004