

ISLAND PEARL — TARTAN



Builder: TARTAN

Year Built: 1977

Model: Cruising Sailboat

Price: PRICE ON APPLICATION

Location: United States

LOA: 37' 0" (11.28m)

Beam: 11' 9" (3.58m)

Min Draft: 4' 2" (1.27m)

Max Draft: 7' 9" (2.36m)

Our experienced yacht broker, Andrey Shestakov, will help you choose and buy a yacht that best suits your needs **Island Pearl — TARTAN** from our catalogue. Presently, at Shestakov Yacht Sales Inc., we have a wide variety of yachts available on our sale's list. We also work in close contact with all the big yacht manufacturers from all over the world.

If you would like to buy a yacht **Island Pearl — TARTAN** or would like help answering any questions concerning purchasing, selling or chartering a yacht, please call **+1(954)274-4435**

TABLE OF CONTENTS

TABLE OF CONTENTS	2
SPECIFICATIONS	4
Overview	4
Basic Information	4
Dimensions	4
Speed, Capacities and Weight	4
Accommodations	4
Hull and Deck Information	5
Engine Information	5
DETAILED INFORMATION	6
Tartan 37 Accommodations	6
Tartan 37 Galley	6
Tartan 37 Engine, Sails, & Rigging	6
Tartan 37 Hull and Deck	7
Tartan 37 Electronics	7
Tartan 37 Plumbing and Electrical	7
Tartan 37 Disclaimer	8
Exclusions	8
Disclaimer	8
PHOTOS	9
Tartan coach roof	9
Tartan dodger	9
Tartan port rail	9
Tartan c.	9
Tartan cockpit	9
Tartan cockpit	10
Tartan anchor	10
Tartan bow	10

Tartan electric windlass	10
Tartan solar	10
Tartan saloon	10
Tartan saloon	11
Tartan saloon	11
Tartan saloon	11
Tartan galley a	11
Tartan galley b	11
Tartan oven stove	11
Tartan refrigerator	12
Tartan chart table	12
Tartan quarter berth	12
Tartan v-berth	12
Tartan v-berth storage	12
Tartan head a.	12
Tartan head b.	13
Tartan engine a.	13
Tartan engine b	13
Tartan engine c.	13
Tartan GPS	13
Tartan engine d.	13
Tartan electronics a.	14
Tartan electronics b.	14
CONTACTS	15
Contact details	15
Telephones	15
Office hours	15
Address	15

SPECIFICATIONS

Overview

Renowned for its sailing abilities and versatility, the Tartan 37 is a very popular performance cruiser. Its keel centerboard affords stability in open water with the ability to explore the shallows. Island Pearl is exceptionally clean and ready to sail.

Basic Information

Category: Cruising Sailboat

Model Year: 1977

Year Built: 1977

Country: United States

Dimensions

LOA: 37' 0" (11.28m)

Beam: 11' 9" (3.58m)

Min Draft: 4' 2" (1.27m)

Max Draft: 7' 9" (2.36m)

Clearance: 54' 0" (16.46m)

Speed, Capacities and Weight

Water Capacity: 90 Gallons

Holding Tank: 19 Gallons

Fuel Capacity: 52 Gallons

Accommodations

Total Cabins: 1

Total Berths: 2

Total Heads: 1

Hull and Deck Information

Hull Material: Fiberglass

Hull Configuration: Monohull

Engine Information

Engines: 1

Manufacturer: Westerbeke

Model: 4-107

Engine Type: Inboard

Fuel Type: Diesel

DETAILED INFORMATION

Tartan 37 Accommodations

Island Pearl has a spacious saloon with fold down table and settees you can stretch out on, a chart table and U-shaped galley. Its forward stateroom has lots of drawers and a full v-berth with insert, complemented by a generously sized quarter berth aft.

Tartan 37 Galley

3-burner propane stove/oven

Frigoboat top load refrigerator 2013

Dishware cubbies and storage lockers

Extra large stainless steel sink

Tartan 37 Engine, Sails, & Rigging

Westerbeke 4-107 40 hp

Transmission & oil cooler 2017

Spare alternator

Mainsail new 2017

135 jib serviced 2015

100 & 150 jib, plus spinnaker

Forestay & backstay replaced 2016

Harken roller furler 2016

Shrouds replaced 2014

Turnbuckles inspected 2016

Mast conduit & wires serviced and/or replaced 2017

Halyards replaced 2016

Self tailing winches

All zincs replaced 2017

Tartan 37 Hull and Deck

4'2 draft with centerboard up; 7'9 down

Bottom painted Spring 2017; 2 coats of vivid

Through hulls checked 2017

Cutlass bearing replaced 2016

Mantis 45# anchor with 160' 5/16 HT chain spliced to 150' 8 plait line

40# Bruce with 150' chain & rode in bucket

Maxwell RC 10-8 Electric windlass

Rub rail re-bedded 2017

Tartan 37 Electronics

Raymarine EV-100 Wheel Pilot 2015

B&G wind, depth, speed

Garmin 741 XS chartplotter

Garmin XHD Radar

Standard Horizon 2150 VHS with AIS receiver

Vesper AIS transceiver

300 wt solar

Sirius XM Radio

Tartan 37 Plumbing and Electrical

30 amp shore power

Hart 2000 Inverter

Most lights LED

Steaming & flood lights new 2017

Jabsco manual head

Spare macerator

Tartan 37 Disclaimer

The Company offers the details of this vessel in good faith but cannot guarantee or warrant the accuracy of this information nor warrant the condition of the vessel. A buyer should instruct his agents, or his surveyors, to investigate such details as the buyer desires validated. This vessel is offered subject to prior sale, price change, or withdrawal without notice

Exclusions

Owner's personal belongings.

Disclaimer

The Company offers the details of this vessel or yacht in good faith but cannot guarantee or warrant the accuracy of this information nor warrant the condition of the vessel. A buyer should instruct his representatives, agents, or his surveyors, to investigate such details as the buyer desires validated. This vessel or yacht is offered subject to prior sale, price change, or withdrawal without notice.

PHOTOS

Tartan coach roof



Tartan dodger



Tartan port rail



Tartan c.



Tartan cockpit



Tartan cockpit



Tartan anchor



Tartan bow



Tartan electric windlass



Tartan solar



Tartan saloon



Tartan saloon



Tartan saloon



Tartan saloon



Tartan galley a



Tartan galley b



Tartan oven stove



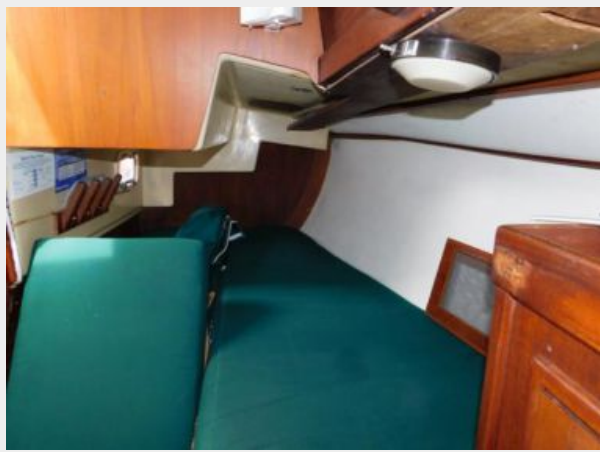
Tartan refrigerator



Tartan chart table



Tartan quarter berth



Tartan v-berth



Tartan v-berth storage



Tartan head a.



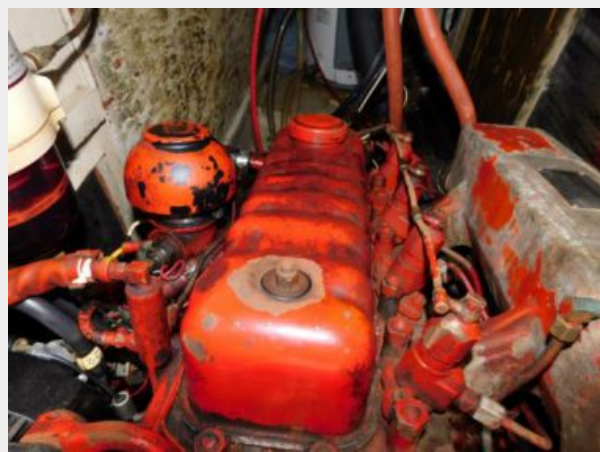
Tartan head b.



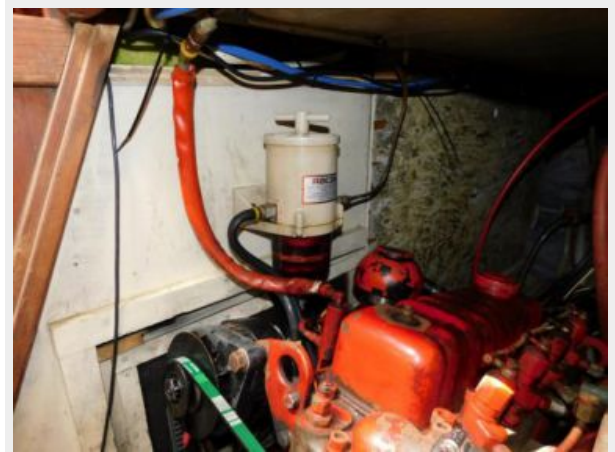
Tartan engine a.



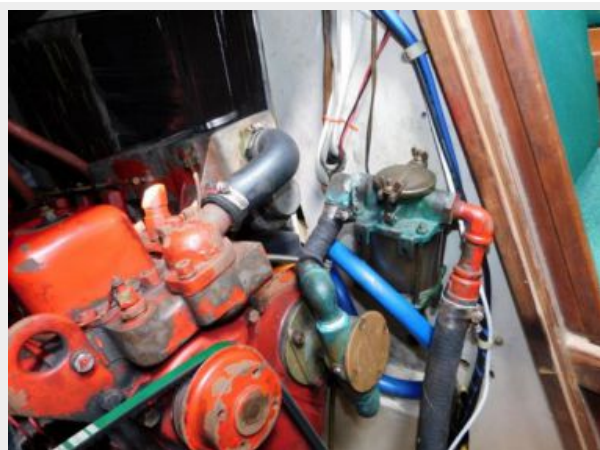
Tartan engine b



Tartan engine c.



Tartan engine d.



Tartan GPS



Tartan electronics a.



Tartan electronics b.



CONTACTS

Andrey Shestakov, leading yacht broker of the sales department of Shestakov Yacht Sales Inc. Shestakov Yacht Sales Inc., the official representative of the Miami/Fort Lauderdale FL headquarters.

Contact details

Email: andrey@shestakovyachtsales.com

Web: shestakovyachtsales.com/en/

Telephones

USA: +1(954)274-4435

Office hours

Monday – Saturday: **9:00 - 21:00** EDT

Sunday: **closed**

Address



Harbour Towne Marina, 850 NE 3rd St,
STE 213, Dania, FL 33004