

## BUGABOO — NONSUCH



**Builder:** NONSUCH

**Year Built:** 1995

**Model:** Cruising Sailboat

**Price:** PRICE ON APPLICATION

**Location:** United States

**LOA:** 26' 0" (7.92m)

**Beam:** 10' 6" (3.20m)

**Max Draft:** 3' 10" (1.17m)

Our experienced yacht broker, Andrey Shestakov, will help you choose and buy a yacht that best suits your needs **Bugaboo — NONSUCH** from our catalogue. Presently, at Shestakov Yacht Sales Inc., we have a wide variety of yachts available on our sale's list. We also work in close contact with all the big yacht manufacturers from all over the world.

If you would like to buy a yacht **Bugaboo — NONSUCH** or would like help answering any questions concerning purchasing, selling or chartering a yacht, please call **+1(954)274-4435**

---

# TABLE OF CONTENTS

---

TABLE OF CONTENTS	2
SPECIFICATIONS	3
Overview	3
Basic Information	3
Dimensions	3
Speed, Capacities and Weight	3
Accommodations	3
Hull and Deck Information	3
Engine Information	4
PHOTOS	5
CONTACTS	15
Contact details	15
Telephones	15
Office hours	15
Address	15

---

# SPECIFICATIONS

---

## Overview

---

When I first approached BUGABOO, it struck me as a unique sailboat that has been very well maintained. The beautiful interior features teak and holly flooring, hand rubbed interior teak wood and joinery and matching upholstery and fabrics. The ports are all stainless steel with screens. An upgrade rarely seen on even larger boats! With a low hour Yanmar engine, newer sails and exterior Sunbrella, BUGABOO is the boat to see. No disappointments and 100% ready to go.

## Basic Information

---

**Category:** Cruising Sailboat

**Model Year:** 1995

**Year Built:** 1995

**Country:** United States

## Dimensions

---

**LOA:** 26' 0" (7.92m)

**Beam:** 10' 6" (3.20m)

**Max Draft:** 3' 10" (1.17m)

## Speed, Capacities and Weight

---

**Displacement:** 8500 Pounds

**Water Capacity:** 65 Gallons

**Holding Tank:** 18 Gallons

**Fuel Capacity:** 12 Gallons

## Accommodations

---

**Total Cabins:** 1

**Total Heads:** 1

## Hull and Deck Information

---

**Hull Material:** Fiberglass

---

## Engine Information

---

**Engines:** 1

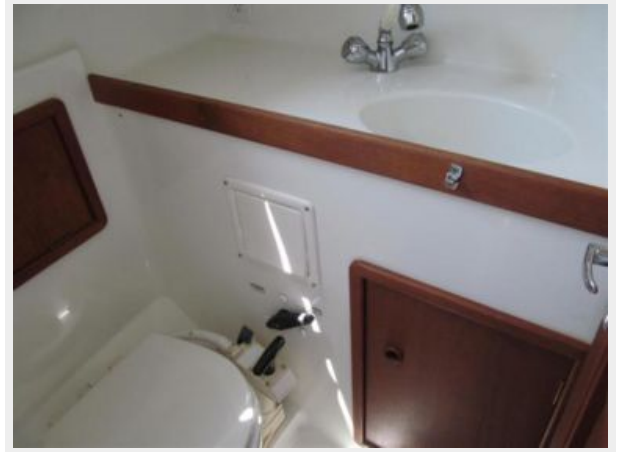
**Manufacturer:** Yanmar

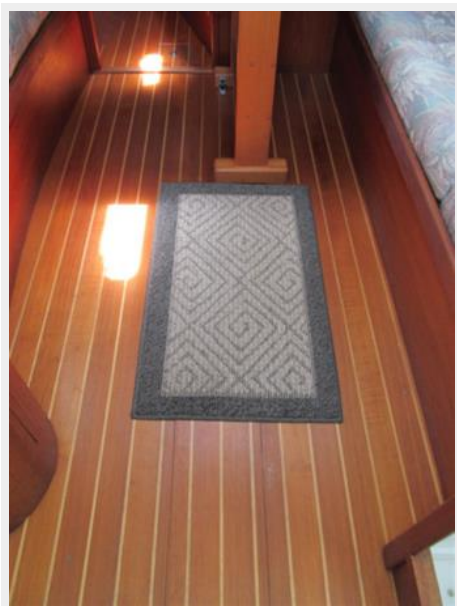
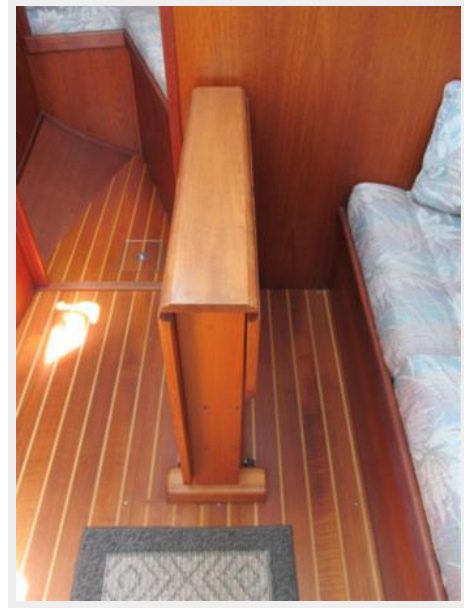
**Model:** 2GM20F

**Engine Type:** Inboard

**Fuel Type:** Diesel

# PHOTOS

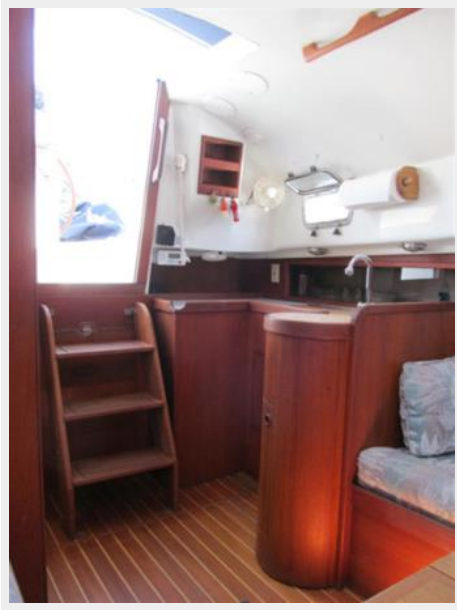




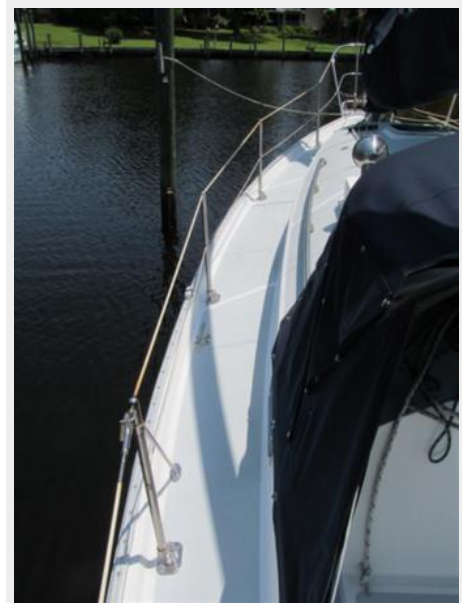


















---

# CONTACTS

---

Andrey Shestakov, leading yacht broker of the sales department of Shestakov Yacht Sales Inc. Shestakov Yacht Sales Inc., the official representative of the Miami/Fort Lauderdale FL headquarters.

---

## Contact details

---

Email: [andrey@shestakovyachtsales.com](mailto:andrey@shestakovyachtsales.com)

Web: [shestakovyachtsales.com/en/](http://shestakovyachtsales.com/en/)

---

## Telephones

---

USA: +1(954)274-4435

---

## Office hours

---

Monday – Saturday: **9:00 - 21:00** EDT

Sunday: **closed**

---

## Address

---



Harbour Towne Marina, 850 NE 3rd St,  
STE 213, Dania, FL 33004