

ORCA — BRISTOL YACHTS



Builder: BRISTOL YACHTS

Year Built: 1975

Model: Cutter

Price: PRICE ON APPLICATION

Location: United States

LOA: 40' 0" (12.19m)

Beam: 10' 9" (3.28m)

Max Draft: 5' 2" (1.57m)

Cruise Speed: 7 Kts. (8 MPH)

Max Speed: 8 Kts. (9 MPH)

Our experienced yacht broker, Andrey Shestakov, will help you choose and buy a yacht that best suits your needs **ORCA — BRISTOL YACHTS** from our catalogue. Presently, at Shestakov Yacht Sales Inc., we have a wide variety of yachts available on our sale's list. We also work in close contact with all the big yacht manufacturers from all over the world.

If you would like to buy a yacht **ORCA — BRISTOL YACHTS** or would like help answering any questions concerning purchasing, selling or chartering a yacht, please call **+1(954)274-4435**

TABLE OF CONTENTS

TABLE OF CONTENTS	2
SPECIFICATIONS	3
Overview	3
Basic Information	4
Dimensions	4
Speed, Capacities and Weight	4
Accommodations	4
Hull and Deck Information	4
Engine Information	5
DETAILED INFORMATION	6
Accommodations	6
Galley	6
Salon	6
Forward V-Berth Cabin	6
Sails and Rigging	6
Navigation Equipment and Electronics	6
Deck and Hull	7
Mechanical Equipment and Electrical Equipment	7
Tender	7
Exclusions	7
Disclaimer	8
PHOTOS	9
CONTACTS	12
Contact details	12
Telephones	12
Office hours	12
Address	12

SPECIFICATIONS

Overview

Designed by Ted Hood and built in 1975 by Bristol Yachts in Bristol Rhode Island this 40-foot sloop is a real sailor's boat. It points well, stands up to a good blow and will sail well in winds as low as 5 knots.

"Orca" has undergone a number of great upgrades in the past year including:

Full awlgrip paint job on topsides, deck and cockpit

Complete bottom job using Petit Ultima SR 60, new 3 blade prop and zincs (4/17)

All seacocks serviced

New transducer for speed and depth

Hull buffed and waxed

Propane on demand water heater serviced

New Standard Horizon GX 2200 VHF with RAM in cockpit, AIS integrated with Raymarine e7 at helm

New Raymarine i70 display mounted at helm

New Fusion RA 70 entertainment system with cabin and cockpit speakers

New Xantrex 20 amp battery charger

New Xantrex battery monitor

New LED tri-color and anchor light

New deck running lights

Autopilot rebuild, both head and J box

New timing cover, raw and fresh water pumps, belts and hoses

Basic Information

Category: Cutter

Sub Category: Sloop

Model Year: 1975

Year Built: 1975

Country: United States

Dimensions

LOA: 40' 0" (12.19m)

LWL: 27' 2" (8.28m)

Beam: 10' 9" (3.28m)

Max Draft: 5' 2" (1.57m)

MFG Length: 39' 2" (11.94m)

Speed, Capacities and Weight

Cruise Speed: 7 Kts. (8 MPH)

Max Speed: 8 Kts. (9 MPH)

Displacement: 17580 Pounds

Accommodations

Total Cabins: 1

Total Berths: 3

Total Heads: 1

Hull and Deck Information

Hull Material: Fiberglass

Engine Information

Engines: 1

Manufacturer: Perkins

Engine Type: Inboard

Fuel Type: Diesel

DETAILED INFORMATION

Accommodations

This vessel features a single forward V-Berth Cabin and one head with sink and shower. There are additional sleeping accommodations in the salon, including one salon settee that converts to a berth and one quarter berth at the nav station that also serves as a cockpit locker when not in use. The table in the main salon also drops down to make a comfortable double bunk.

Galley

The Galley features a 4 burner gimballed stove, top opening refrigerated ice box and sink, plus storage cabinets with sliding doors.

Salon

The salon has a settee as well as a dining table with ample seating for 4 persons. Above on both sides are more cabinets with sliding drawers as well as storage under and behind seat cushions. There is an access door to the head, with sink and shower, from the salon.

The Nav Station has a hinged desktop for chart storage underneath and drawers and a built-in cabinet located in the base and another cabinet at desk level.

There are additional sleeping accommodations provided in the salon and at the Nav Station, as the settee converts to a sea berth and there is another quarter berth located at the nav station, which serves as a cockpit locker when not in use.

Forward V-Berth Cabin

The forward Cabin features a V-berth with filler, drawers underneath and four cabinets at eye level with sliding doors. To starboard, there is a hanging locker with more drawers and a cabinet to its right. Aft is an access door to the head with sink and shower (also accessed from the salon). There is another hanging locker opposite of the head, which is not in the forward cabin.

Sails and Rigging

- Profurl headsail roller furling
- Harken 6:1 mainsheet system

Navigation Equipment and Electronics

- Fixed mount Standard Horizon VHF
- Raymarine e7 mounted at helm in Navpod housing.
- Raymarine below deck gyro assisted autopilot with ST 6001 control unit
- Ritchie 5" binnacle mount compass with binnacle guard and Navpod3instrument pod
- New RAM VHF with AIS in cockpit (2017)
- New i70 depth and speed display in cockpit (2017)
- New Fusion stereo system

Deck and Hull

- Two anchors: Bruce 44 on 250 ft. of 5/16" high-test chain 25# West Marine high-tensile with 25 ft. of 3/8" chain and 200' of 5/8" rope
- Simpson Lawrence SL555 2 speed windlass
- 2 Lewmar 44C 2 speed self tailing winches\
- Spray dodger and Bimini
- Masthead tri-color and anchor lights have been converted to LED
- Full awlgrip paint job including topsides,deck, cabin top and cockpit
- Full bottom job (2017)
- New sunshades

Mechanical Equipment and Electrical Equipment

- Pressurized hot and cold running water with a Bosch propane "on demand" water heater
- Custom built Technicold engine driven holding plate refrigeration with 120-volt (plug in) shore side unit
- 225 amp hour house batteries plus high output starting battery
- Balmar high output (75 amp) alternator with 3 stage smart regulator
- Xantrex battery monitor, (2017)
- Xantrex 20 amp battery charger (2017)
- Electric and manual bilge pumps
- The Perkins 4-108 engine was NEW when in 1992 and has about 600 hrs on it. It underwent a complete mechanical system overhaul in 2003.

Tender

The tender and outboard are excluded from this listing.

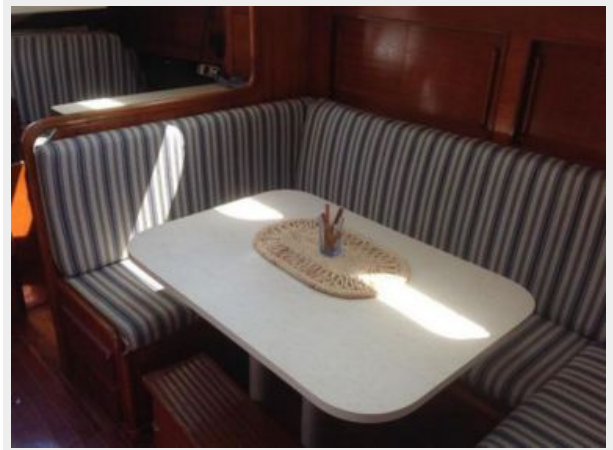
Exclusions

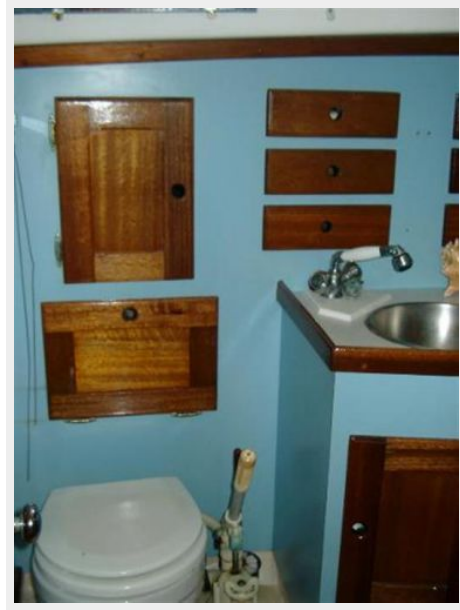
Owner's personal belongings.

Disclaimer

The Company offers the details of this vessel or yacht in good faith but cannot guarantee or warrant the accuracy of this information nor warrant the condition of the vessel. A buyer should instruct his representatives, agents, or his surveyors, to investigate such details as the buyer desires validated. This vessel or yacht is offered subject to prior sale, price change, or withdrawal without notice.

PHOTOS





CONTACTS

Andrey Shestakov, leading yacht broker of the sales department of Shestakov Yacht Sales Inc. Shestakov Yacht Sales Inc., the official representative of the Miami/Fort Lauderdale FL headquarters.

Contact details

Email: andrey@shestakovyachtsales.com

Web: shestakovyachtsales.com/en/

Telephones

USA: +1(954)274-4435

Office hours

Monday – Saturday: **9:00 - 21:00** EDT

Sunday: **closed**

Address



Harbour Towne Marina, 850 NE 3rd St,
STE 213, Dania, FL 33004