

BLURRED LINES — CABO



Судостроитель: CABO

Год постройки: 2005

Модель: Катер для спортивной рыбалки

Цена: **ЦЕНА ЯХТЫ ПО ЗАПРОСУ**

Местонахождение: United States

Длина общая: 52' 0" (15.85m)

Ширина: 17' 9" (5.41m)

Мин. осадка: 4' 11" (1.50m)

Купить **Blurred Lines — CABO** а также выбрать подходящую вам яхту из нашего каталога яхт вам поможет опытный яхтенный брокер Андрей Шестаков. На сегодняшний день компания **Shestakov Yacht Sales Inc.** имеет большое количество яхт в собственном списке продаж, а также тесно сотрудничает со всеми крупными яхтенными производителями по всему миру.

Для того чтобы купить яхту **Blurred Lines — CABO** а также проконсультироваться по любому вопросу связанному с покупкой, продажей, чартером яхт позвоните по телефону **+7(918)465-66-44**.

ОГЛАВЛЕНИЕ

ОГЛАВЛЕНИЕ	2
ХАРАКТЕРИСТИКИ	5
Основная информация	5
Размеры	5
Скорость, вместимость и масса	5
Размещение	5
Корпус и палуба	5
Информация о двигателе	5
ПОДРОБНОЕ ОПИСАНИЕ	6
Accommodations	6
Salon	6
Galley	7
Master Stateroom	7
Master Stateroom Head	8
Guest Stateroom	8
Guest/Day Head	8
Engine Room	8
Electronics	9
Helm Deck	9
Tower	10
Cockpit	11
Deck	11
Exclusions	11
Remarks	12
Исключения	12
Отказ от ответственности	12
ФОТОГРАФИИ	13
Salon	13

Salon	13
Salon	13
Salon	13
Galley	13
Galley	13
Galley	14
Electrical Panel	14
Master Stateroom	14
Master Stateroom	14
Master Stateroom	14
Master Stateroom	14
Master Stateroom	15
Master Stateroom	15
Master Stateroom Head	15
Master Stateroom Head	15
Master Stateroom Head	16
Guest Stateroom	16
Guest Stateroom	16
Guest Stateroom	16
Guest Stateroom Head	17
Guest Stateroom Head	17
Cockpit	17
Cockpit	17
Cockpit	17
Cockpit	17
Cockpit	18
Helm	18
Helm	18
Helm	18

Helm	18
Helm	18
Helm	19
Helm	19
Helm	19
Engine Room	19
Engine Room	19
Engine Room	19
Engine Room	20
Engine Room	20
Engine Room	20
Blurred Lines	20
Blurred Lines	20
Blurred Lines	20
КОНТАКТЫ	21
Контактная информация	21
Телефоны	21
Время работы	21
Адрес	21

ХАРАКТЕРИСТИКИ

Основная информация

Тип судна: Катер для спортивной рыбалки

Подкатегория: Express

Модельный год: 2006

Год постройки: 2005

Страна: United States

Размеры

Длина общая: 52' 0" (15.85m)

Ширина: 17' 9" (5.41m)

Мин. осадка: 4' 11" (1.50m)

Скорость, вместимость и масса

Объем топливного бака: 1400 Gallons

Размещение

Всего кают: 2

Корпус и палуба

Материал корпуса: Fiberglass

Информация о двигателе

Двигатели: 2

Производитель: MAN

Модель: V12

Тип двигателя: Inboard

Тип топлива: Diesel

ПОДРОБНОЕ ОПИСАНИЕ

Accommodations

The extensive equipment list and custom options will give you a feeling for the attention to detail that went into building this yacht. Standing in the roomy cockpit, you will find two large fish boxes--both equipped with 2 Eskimo ice machines--fighting chair, cockpit combing pads, cockpit freezer, engine room entrance, cockpit lighting, transom door, three cameras with digital recording capabilities, underwater lights, port and starboard 12 V power outlets for power reels, 6 custom Release rod holders, transom bait tank with window, cockpit fresh-and salt-water wash-downs, access to custom Pipe Welders tower (one of the nicest towers, you will ever see), and custom factory-installed electric barbecue grill. This equipment list is just for the cockpit; think how well the rest of this fishing yacht is equipped. Going up the steps to the expansive air conditioned helm deck, we find a beautiful teak deck with teak steps. To starboard, we have cabinetry enclosing the tackle center, and drawer-type refrigerator freezer, (see Helm deck for list of equipment). To port is a large seating area with custom teak table and rod storage beneath the side seat. Going forward, we have three forward-facing helm chairs, a large helm dash area with four electronic display screens and incredible electronics, opening windshield, hardtop, full enclosure with air-conditioning, overhead compartment with teaser reels, and entryway to lower deck. Going down the companionway stairs, we enter the salon with a teak and holly sole. To starboard, we have a day head, right at the bottom of the stairs. The large galley is also to starboard, with many cabinets and plenty of counter space. On the opposite side of the salon, we have a large U-shaped seating group with custom Hi-Lo table made by Release Marine. The table can be converted into a dining table. There is a large flat-screen TV mounted on the forward bulkhead, rod storage overhead on the port side, with storage cabinets, and the electrical control panel at eye level. Moving forward, we find two large deck hatches into the bilge area; the second hatch was a custom option. This area can be used both for servicing equipment such as the air conditioners and water maker or for storage of bulk items. To port is the comfortable guest state room with two roomy bunks with hanging locker and storage lockers. Continuing forward down the companionway, we come to the master stateroom. The Master stateroom is well equipped; it has an island-style berth with multiple storage units underneath, hanging lockers, outboard overhead storage lockers, and a large flat screen TV. Attached to the master stateroom we find the spacious master head, equipped with custom countertop and sink along with an enclosed stand-up shower. Last, but not least, we enter the engine room from the cockpit. The engine room offers standing headroom and good access to the engines, with an assortment of optional equipment and two generators. Few boats of this size give you this much space in the engine room.

Salon

- Teak & holly sole
- Custom leather U-shaped sofa

- Custom Hi-Lo cocktail/extendable dinette table built by Release
- Two (2) custom floor hatches into bilge area
- Bilge area painted out in bright white
- Entertainment center w/Bose lifestyle, 38, surround sound system w/three zones
- Bose lifestyle system
- 50" flat screen LCD television
- Three (3) digital video recorders for cockpit cameras
- Air-conditioning/heat, dual zone, 24,000 BTU
- Overhead rod storage locker
- Eye-level electrical panel
- Storage cabinets
- Day head/guest head

Galley

- Ceramic cook top w/stainless steel sea rails
- Cook top hood
- Corian countertop w/custom sea rails
- Corian sink
- Teak & Holly sole
- Garbage disposal
- Microwave convection oven
- Storage compartments w/drawers throughout.
- Trash receptacle compartment
- Subzero freezer & refrigerator
- Countertop lighting

Master Stateroom

- Island style double berth w/5" mattress
- Storage compartment & large drawers below bed
- Mattress lifts w/storage below
- Port & starboard storage lockers can hold up to 8 rods.
- Recessed halogen lights, 24V
- Custom built in large LCD flat screen TV
- Air conditioning, w/10,000 BTU
- Access to anchor rope locker
- Hanging lockers, port & starboard side
- Positive latches on cabinets & drawers
- Stereo speakers
- Private access to the head

Master Stateroom Head

- Door
- Corian countertops w/custom Corian sink
- Custom vanity w/storage cabinets
- Mirror
- Designer fixtures & shower fixtures
- Overhead lighting, 24V
- Separate stall shower w/automatic shower sump pump
- Toiletries storage cabinet
- Ventilating hatch in deck

Guest Stateroom

- A/C with slave control
- Dresser w/ custom wall mounted mirror
- Locker
- Overhead lighting, 24 VAC & 24 VDC
- Reading lights, 24VDC
- (2) single berths

Guest/Day Head

- Corian countertop with custom Corian sink
- Vanity w/storage cabinet
- Hand rail on vanity
- Overhead lighting, 24V
- Mirrored toiletries storage cabinet

Engine Room

- 21 KW Onan generator with 1603 hours
- 9 KW Onan generator with 1111 hours
- Reverso fuel polishing system.
- Eskimo ice machine plumbed to fish box
- Backup 24V fresh water pump
- Bilge pumps, four automatic/manual & one automatic
- Bonding system, w/transom zinc
- Engine alarm system
- Engine driven emergency bilge pump
- Two (2) engine room blowers, 24V

- Engine room ventilation fans 110V
- Fire extinguishing system
- Oil change system for the engine, generator & transmission
- Power steering,
- Drip-less shaft logs
- Bright white painted out bilges
- Electric fuel priming pumps

Electronics

- 4- Ray Marine bright display screens mounted at the helm
- (3)E- 120 Series high-performance multifunction displays
- (1)Ray Marine 15" day light bright display Ray Marine functions included in displays
- Chart plotting
- 3-D chart plotting w/aerial photo charts & panoramic photos
- Digital sound module 1kw thru-hull high-definition
- Sirius satellite weather receiver
- IS250 AIS receiver
- (2)Engine room cameras
- (2) Ray Marine radar units, 10K 72-mile w/6' antenna & a 4K 48 mile dome antenna
- Ray Marine Life Tag wireless crew overboard monitoring system w/(5) Life Tag pendants
- Ray Marine Auto Helm series smart pilot
- Ray Marine VHF Ray 218
- Ray Marine Loudhailer R430
- Ray Marine ST60 + graphic
- Ray Marine VHF Ray 240 speaker
- Ray Marine keyboard
- Ray Marine high definition satellite TV antenna
- Ray Marine smart controller
- Infrared 360° camera mounted on hardtop, for night vision
- Globalstar satellite phone.
- Cell phone booster
- Wi-Fi booster
- (2) satellite receivers
- (3) Sony digital recorders
- (3) cameras, one on each outrigger, one on centerline
- Bose lifestyle w/three zones

Helm Deck

- Three large fiberglass cabinets w/doors housing a tackle center and drawer type refrigerator w/icemaker

- Teak deck & steps
- Stidd helm seat, adjustable w/foot rest on pedestal
- (2) Stidd matching chairs on the port & starboard side
- L-shaped lounge port side w/aft lockable rod storage below
- Sliding companionway door
- Hardtop, fiberglass
- Compartment for teaser reels
- (2) electric teaser reels
- Helm deck air-conditioned
- Four sided enclosure
- Opening center windshield
- Side vents in windshield
- Overhead hatches in hardtop
- Handrails
- Custom-made table by Release
- Helm controls
- Engine displays
- Storage cabinet
- Stereo speakers, w/volume control

Tower

- Tuna tower molded top single rail 50-54'
- Tower Sunshade: 72" molded top
- Antenna bracket - small dome
- BRKT - antenna sat./nav. on sunshade
- Antenna: stand - off
- Bench seat fixed w/backrest 72"
- Control box - 50" contoured face, Cabo white
- Compass, flush mounted F82, black
- Controls & steering
- One piece molded standing platform
- Flag staff
- Lights linear 4 in 1
- Light, 4 qtz lts
- Lights: anchor run lights
- Bait tank, 50 gallon, molded into transom
- Courtesy lighting under gunwales
- Three cameras for recording action in the cockpit
- Underwater lights
- Port & starboard 12V power outlets for power reels
- (6) Release rod holders, without external fasteners, (excellent)
- Cockpit fresh & salt water wash down

- Access to Pipewelders tower
- Barbecue grill, custom factory, installed
- Lazarette hatches
- Storage boxes under gunwale

Cockpit

- (2) large Fish Boxes insulated w/macerators
- (2) Eskimo icemachine, one for each fish box
- Center rigger
- 38' Outriggers
- Fighting chair by Release (back rest w/out boats name included)
- Cockpit combing pads
- Cockpit freezer
- Engine room entrance
- Cockpit lighting
- Transom door
- Bait tank, 50 gallon, molded into transom
- Courtesy lighting under gunwales
- Three cameras for recording action in the cockpit
- Underwater lights
- Port & starboard 12V power outlets
- (6) Release rod holders, without external fasteners, (excellent)
- Cockpit fresh & salt water wash down
- Access to Pipewelders tower
- Barbecue grill, custom factory, installed
- Lazarette hatches
- Storage boxes under gunwale

Deck

- Windlass electric 24V w/remote switch at helm
- Windshield, tinted heavy-duty aluminum construction
- Windshield washers
- (3) windshield wipers
- Molded in skid surface
- All cleats stainless Steel
- Pipewelders marine tower

Exclusions

All personal items

Remarks

If you're looking for a 52 Express in excellent condition, that is truly tournament ready and tournament equipped, you have found your boat.

Исключения

При продаже яхты исключаются личные вещи владельца.

Отказ от ответственности

Компания предоставляет описание судна или яхты добросовестно, но не может гарантировать точность этой информации, а также не ручается за техническое состояние. Покупатель должен проинструктировать своих агентов или оценщиков исследовать представленную информацию более подробно, по собственному желанию. Продажа судна или яхты, изменение цены или снятие с продажи будет происходить без предварительного уведомления.

ФОТОГРАФИИ

Salon



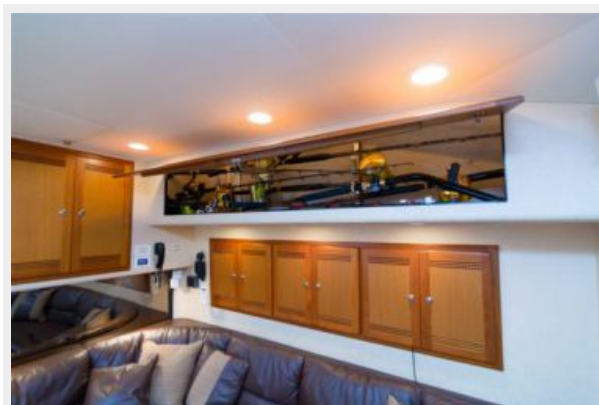
Salon



Salon



Salon



Galley



Galley



Galley



Electrical Panel



Master Stateroom



Master Stateroom



Master Stateroom



Master Stateroom



Master Stateroom



Master Stateroom



Master Stateroom Head



Master Stateroom Head



Master Stateroom Head



Guest Stateroom



Guest Stateroom



Guest Stateroom



Guest Stateroom Head



Guest Stateroom Head



Cockpit



Cockpit



Cockpit



Cockpit



Cockpit



Helm



Helm



Helm



Helm



Helm



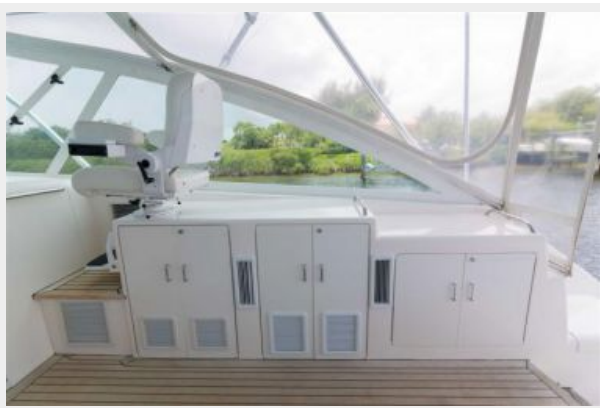
Helm



Helm



Helm



Engine Room



Engine Room



Engine Room



Engine Room



Engine Room



Engine Room



Blurred Lines



Blurred Lines



Blurred Lines



КОНТАКТЫ

Андрей Шестаков (Andrey Shestakov) – ведущий яхтенный брокер отдела продаж яхт и судов компании Shestakov Yacht Sales Inc. Официальный представитель Shestakov Yacht Sales Inc. для русскоговорящих клиентов в центральном офисе компании в Майами/Форт Лодердейл/Флорида/США.

Контактная информация

Email: andrey@shestakovyachtsales.com

Web: shestakovyachtsales.com

Телефоны

Краснодарский край: **+7(918)465-66-44**

США, Майами, Флорида: **+1(954)274-4435**

Время работы

Понедельник – Суббота: **9:00 - 21:00**
EDT

Воскресенье: **Закрето**

Адрес



Harbour Towne Marina, 850 NE 3rd St,
STE 213, Dania, FL 33004