

## VIRAGO — CATALINA



**Судостроитель:** CATALINA

**Год постройки:** 2008

**Модель:** Крейсерская яхта

**Цена:** **ЦЕНА ЯХТЫ ПО ЗАПРОСУ**

**Местонахождение:** United States

**Длина общая:** 47' 0" (14.33m)

**Ширина:** 14' 0" (4.27m)

**Макс. осадка:** 5' 9" (1.75m)

Купить **Virago — CATALINA** а также выбрать подходящую вам яхту из нашего каталога яхт вам поможет опытный яхтенный брокер Андрей Шестаков. На сегодняшний день компания **Shestakov Yacht Sales Inc.** имеет большое количество яхт в собственном списке продаж, а также тесно сотрудничает со всеми крупными яхтенными производителями по всему миру.

Для того чтобы купить яхту **Virago — CATALINA** а также проконсультироваться по любому вопросу связанному с покупкой, продажей, чартером яхт позвоните по телефону **+7(918)465-66-44**.

# ОГЛАВЛЕНИЕ

---

ОГЛАВЛЕНИЕ	2
ХАРАКТЕРИСТИКИ	6
Обзор	6
Основная информация	6
Размеры	6
Скорость, вместимость и масса	6
Корпус и палуба	7
Информация о двигателе	7
ПОДРОБНОЕ ОПИСАНИЕ	8
Accommodations	8
Hull and Deck	8
Galley	9
Sails, Spars and Rigging	9
Electronics	10
Electrical	10
Steering and controls	10
Manufacturer Provided Description	11
Exclusions from sale	11
Исключения	11
Отказ от ответственности	11
ФОТОГРАФИИ	12
Stbd fwd 2	12
Port side	12
Rigging	12
Foredeck	12
Hard Dodger with Removable Glass Panels	13
Hard Dodger with solar panels	13
Cockpit Table	13

Main salon fwd	13
Main salon fwd 2	13
Main salon table	13
Main salon table 2	14
Main salon table 3	14
Salon instruments	14
Main salon recliners	14
Companionway stairs	15
EPIRB	15
Galley	15
Galley 2	15
Galley 3	16
Galley double sink	16
Galley refrigeration	16
Galley refrigeration 2	16
Galley 4	16
Galley refrigeration 3	16
Galley lighted cabinet	17
Nav Station	17
Nav Station 2	17
Electrical Panel	17
Control Panel	17
Nav Station electronics	17
Electrical Control Panel	18
Master Stateroom	18
Master Stateroom 2	18
Master Stateroom Vanity	18
Master Head	18
Master Stateroom 3	18

Head countertop	19
Head System	19
VIP Stateroom fwd	19
VIP Stateroom Berth and Fans	19
VIP Stateroom Lockers	20
VIP Head Compartment	20
Head Compartment stall shower	20
Battery Compartment	20
Engine Compartment	21
Dry Bilge	21
Raycor Filtering & Sea Strainer	21
75 hp Yanmar Engine	21
MOB Modules	22
Dinghy Davits	22
Stbd Helm	22
Port Helm	22
Port Cockpit Coaming	23
Stbd Cockpit Coaming & Engine Control	23
Raymarine Autopilot & Solar Vent	23
Port Electric Halyard Winch	23
Stbd Electric Primary Winch	23
Port Electric Primary Winch	23
Stbd Electric Halyard Winch	24
Raymarine Hybrid Plotter	24
Center Helm Instrumentation	24
Raymarine Sailing Instrumentation	24
Raymarine Hybrid Plotter	25
Ipad Linked to Raymarine	25
Anchor Windlass and Locker	25

---

Engine Gauges	25
Coastal Commander 6 Person Liferaft (repacked 2016)	26
Manufacturer Provided Image	26
Manufacturer Provided Image: 2-Cabin layout.	26
КОНТАКТЫ	27
Контактная информация	27
Телефоны	27
Время работы	27
Адрес	27

# ХАРАКТЕРИСТИКИ

## Обзор

This Catalina 470 is a rare find. She is a one owner boat that has enjoyed seasonal boating in northern climates for most of her life. Her owners have continually updated her systems with thoughtful research and care. Her original build cost was to the current owners specs. If you are looking for a stunning and very well taken care of boat, this is the one. This is a very spacious double cabin boat which has a drop salon table to another double berth. The galley is capable of providing excellent dinners while aboard after a great day of cruising. She carries like new sails, in mast mainsail furling, Solar panels on the hard top dodger which is connected to the bimini, 5 zone Espar heating was professionally installed. Add in massive Harken 70 electric genoa winches and electric halyard winches and you have a remarkably easy boat to sail. Chart plotter and radar have been updated. When you are down below you will think she was just delivered from the factory. Don't miss this fine yacht. DYSID:3089582

## Основная информация

**Тип судна:** Крейсерская яхта

**Подкатегория:** Cruising/Racing Sailboat

**Модельный год:** 2008

**Год постройки:** 2008

**Страна:** United States

## Размеры

**Длина общая:** 47' 0" (14.33m)

**Длина по ватерлинии:** 42' 0" (12.80m)

**Ширина:** 14' 0" (4.27m)

**Макс. осадка:** 5' 9" (1.75m)

**Трапы:** 63' 5" (19.33m)

**Длина привального бруса:** 47' 11"  
(14.60m)

## Скорость, вместимость и масса

**Водоизмещение:** 27750 Pounds

**Вместимость воды:** 214 Gallons

**Вместимость сточного бака:** 32 Gallons

**Объем топливного бака:** 44 Gallons

---

## Корпус и палуба

---

**Материал корпуса:** Fiberglass

**Комплектация корпуса:** Monohull

---

## Информация о двигателе

---

**Двигатели:** 1

**Производитель:** Yanmar

**Модель:** 75HP

**Тип двигателя:** Inboard

**Тип топлива:** Diesel

---

# ПОДРОБНОЕ ОПИСАНИЕ

---

## Accommodations

---

- Espar heating system with 5 zones
- Amtico synthetic teak and holly pattern sole
- Separate shower stalls
- Tecma electric heads with fresh & salt water flush & new sanitation hose
- Light oyster Ultra-leather upholstery
- Inner spring mattresses in both staterooms
- Sleeps six (6)
- Two (2) cabins
- Two (2) heads with showers
- 6 Caframo Shirocco programable fans
- Ultraleather upholstery in main cabin
- Satin varnished finish on interior wood surfaces
- Navigation station with chart table and built-in upholstered contoured seating
  
- Teak veneer bulkheads and teak trim
- Well equipped galley
- Many electronic extras

## Hull and Deck

---

- Wing Keel
- Lewmar bow thruster
- One piece fiberglass deck, white with grey two-tone
- Twin helm cockpit with contoured coamings & elk hyde wheel wraps
- Fiberglass cockpit table with two leaves
- Walk-thru stern with transom boarding platform and storage lockers
- Stern boarding ladder with contour treads
- Double lifelines with port and starboard gates
- Mooring cleats, two (2) fore and two (2) aft
- Midship springline cleats
- Midwatch blue and silver sheer stripe
- Coast Guard Safety Gear
- White bimini with hard dodger combination
  
- Closed cell cockpit cushions
- Molded-in gel-coat waterline, midwatch blue
- Large double anchor rollers on foredeck
- Maxwell 1500 anchor windlass, power up and down controls, with foot switches
- Anchor locker forward with divider and two (2) scuppers



- Stainless steel hand rails on cabin top
- Stern rails with observation seats, port and starboard, with cup holders
- Molded-in landing for dodger
- Anodized aluminum toe rails

---

## Galley

---

- Refrigeration system, DC Powered with divided refrigeration/freezer compartments
- Top and front loading refrigeration doors
- Overhead galley storage cabinet
- Microwave oven, built-in, AC powered
- Three-burner stainless steel stove with oven, LPG, gimballed with lock
- Stove hood with light and vent
- Large top loading locker
  
- Soft composite galley sole
- Illuminated cabinet with beveled glass door
- In-counter trash chute to under counter bin
- Overhead cabinets with glass and dish storage

---

## Sails, Spars and Rigging

---

- Double spreader masthead rig
- Schaefer 3100 headstay furling system
- Selden In-mast furling mainsail
- MACK furling main WO battens (2016)
- Doyle 1,300 sq.ft. 1.5 oz asymmetrical sail with dedicated halyard
- MACK 135% Furling genoa, dacron, with U.V. protection (2016)
- Complete standing and running rigging
- Internal pre-stretched dacron rope halyards
- PVC wiring conduit with messenger in mast
- Two (2), two-speed Harken 70 electric self-tailing primary winches
- Two (2) two speed Harken 44 electric self-tailing halyard winches
- Halyards and vang control lines led aft
  
- Port and starboard line storage compartments
- One (1) 10" winch handle
- Mainsheet traveler with car and multi-purchase adjuster system
- Inboard genoa tracks with ball-bearing cars
- Boom vang, rigid with multi-purchase adjustment
- Genoa track cars adjustable from cockpit

---

## Electronics

---

- 12" Raymarine E125 Hybrid Touch Screen Plotter and 4KW Radar (2017)
- Raymarine 659 AIS transponder (2016)
- Raymarine plotter link to Ipad
- Raymarine ST -60+ Wind instrument
- Raymarine Speed display
- Raymarine Lifetag with 4 senders
- Raymarine Depth display
- Raymarine ST 7001 Autopilot
- Raymarine Autopilot remote control
- ICom M504 VHF radio at Nav station and helm
- Raymarine ST60+ Graphic display (Nav station)
- Dual Ritchie Binnacle compasses
- EPIRB
- Jensen Marine CD stereo with 4 Bose speakers
- Xantrex Linkpro battery monitor
- Xantrex Freedom 20 Inverter with 100 amp charger

---

## Electrical

---

- Three (3) heavyduty 8D 12-volt DC marine batteries in service house bank
- Marine battery charger, multibank automatic
- 2000 Watt inverter charger
- High quality hi-output programable fans mounted throughout interior
- 7 Cabin top hatch solar ventilators
- 12-volt DC lighting throughout
- Custom 115-volt-AC/12-volt-DC electrical distribution panels
- Separate main breaker panel and windlass control
- International running lights
- Masthead, foredeck and steaming light
  
- Circuit breaker for AC/DC electrical circuits
- Ground fault circuit protection
- AC duplex receptacles throughout
- Dual 115-volt 30-amp shorepower cord and adaptor
- Shore Power with dual 30 amp inlets and cords

---

## Steering and controls

---

- Dual station, independent, pedestal steering
- Compass with light, at port and starboard steering stations

- Centrally mounted engine instruments
- Single lever engine controls on starboard side
- Steering brake in wheel hub
- Twin stainless destroyer wheels
  
- Bow Thruster
- Emergency tiller system
- Yanmar diesel engine, fresh water cooled, turbocharged with reduction gear
- Sea water strainer on cooling inlet
- Flexifurl 3 blade feathering propeller
- Bilge blower and ventilation system

---

## Manufacturer Provided Description

---

The Catalina 470 features a unique, structural fiberglass grid is bonded to the hull and provides both strength for the hull and a massive foundation for securing bulkheads, equipment, engine and tanks. The generous deck beam is carried well aft providing for an expansive cockpit with twin steering stations and large master stateroom below. The Catalina 470 embodies all that is essential to safe passagemaking and all that is desired in performance, function, comfort and luxury.

---

## Exclusions from sale

---

Owners decorative items and master stateroom bedspread.

---

## Исключения

---

При продаже яхты исключаются личные вещи владельца.

---

## Отказ от ответственности

---

Компания предоставляет описание судна или яхты добросовестно, но не может гарантировать точность этой информации, а также не ручается за техническое состояние. Покупатель должен проинструктировать своих агентов или оценщиков исследовать представленную информацию более подробно, по собственному желанию. Продажа судна или яхты, изменение цены или снятие с продажи будет происходить без предварительного уведомления.

# ФОТОГРАФИИ

**Stbd fwd 2**



**Port side**



**Foredeck**



**Rigging**



### Hard Dodger with Removable Glass Panels



### Hard Dodger with solar panels



### Cockpit Table



### Main salon fwd



### Main salon fwd 2



### Main salon table



**Main salon table 2**



**Main salon table 3**



**Main salon recliners**



**Salon instruments**



**Companionway stairs**



**EPIRB**



**Galley**



**Galley 2**



**Galley 3**



**Galley double sink**



**Galley refrigeration**



**Galley refrigeration 2**



**Galley refrigeration 3**



**Galley 4**





**Galley lighted cabinet**



**Nav Station**



**Nav Station 2**



**Electrical Panel**



**Control Panel**



**Nav Station electronics**



**Electrical Control Panel**



**Master Stateroom**



**Master Stateroom 2**



**Master Stateroom Vanity**



**Master Stateroom 3**



**Master Head**



**Head countertop**



**Head System**



**VIP Stateroom fwd**



**VIP Stateroom Berth and Fans**



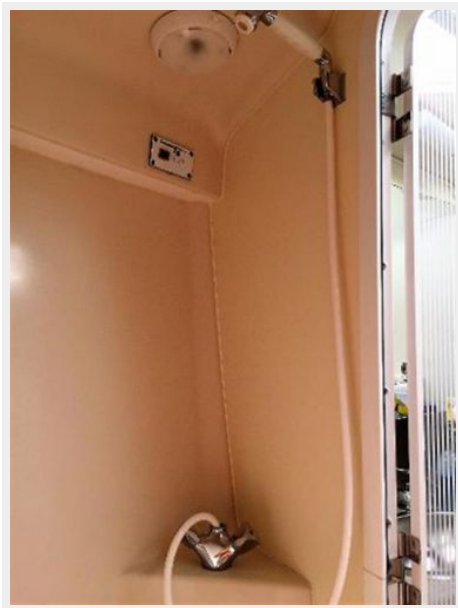
**VIP Stateroom Lockers**



**VIP Head Compartment**



**Head Compartment stall shower**



**Battery Compartment**



**Dry Bilge**



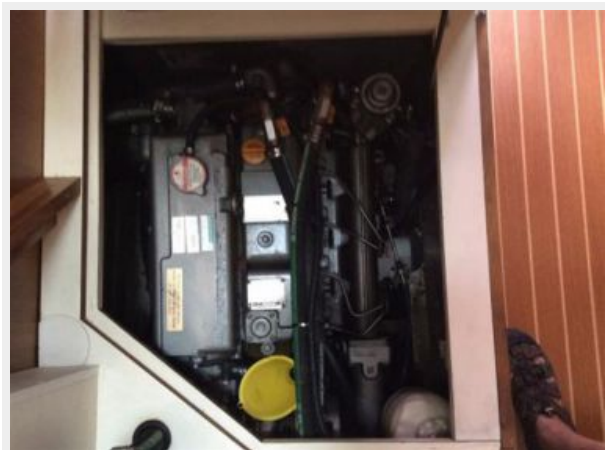
**Engine Compartment**



**Raycor Filtering & Sea Strainer**



**75 hp Yanmar Engine**



### MOB Modules



### Dinghy Davits



### Stbd Helm



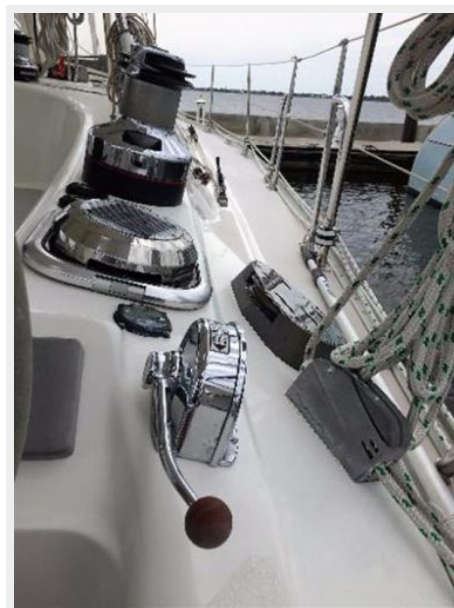
### Port Helm



**Port Cockpit Coaming**



**Stbd Cockpit Coaming & Engine Control**



**Raymarine Autopilot & Solar Vent**



**Port Electric Halyard Winch**



**Stbd Electric Primary Winch**



**Port Electric Primary Winch**



**Stbd Electric Halyard Winch**



**Raymarine Hybrid Plotter**



**Raymarine Sailing Instrumentation**



**Center Helm Instrumentation**





### Raymarine Hybrid Plotter



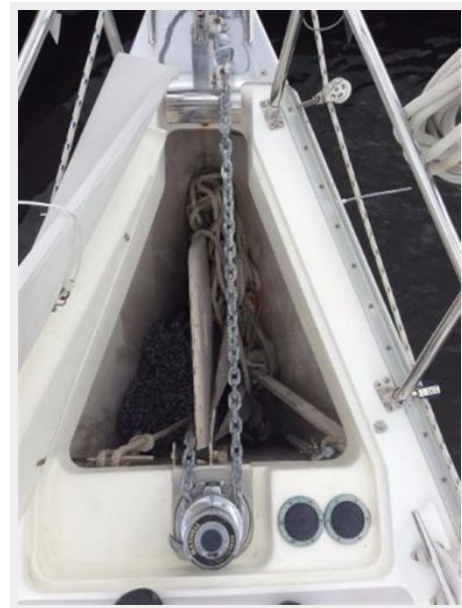
### Ipad Linked to Raymarine



### Engine Gauges



### Anchor Windlass and Locker



## Coastal Commander 6 Person Liferaft (repacked 2016)



## Manufacturer Provided Image



## Manufacturer Provided Image: 2-Cabin layout.



# КОНТАКТЫ

---

Андрей Шестаков (Andrey Shestakov) – ведущий яхтенный брокер отдела продаж яхт и судов компании Shestakov Yacht Sales Inc. Официальный представитель Shestakov Yacht Sales Inc. для русскоговорящих клиентов в центральном офисе компании в Майами/Форт Лодердейл/Флорида/США.

## Контактная информация

---

Email: [andrey@shestakovyachtsales.com](mailto:andrey@shestakovyachtsales.com)

Web: [shestakovyachtsales.com](http://shestakovyachtsales.com)

## Телефоны

---

Краснодарский край: **+7(918)465-66-44**

США, Майами, Флорида: **+1(954)274-4435**

## Время работы

---

Понедельник – Суббота: **9:00 - 21:00**  
EDT

Воскресенье: **Закрето**

## Адрес

---



Harbour Towne Marina, 850 NE 3rd St,  
STE 213, Dania, FL 33004