

45FT 2012 HUNTER DECK SALON — HUNTER



Builder: HUNTER

Year Built: 2012

Model: Cruising Sailboat

Price: PRICE ON APPLICATION

Location: United States

LOA: 45' 0" (13.72m)

Beam: 14' 6" (4.42m)

Max Draft: 5' 0" (1.52m)

Our experienced yacht broker, Andrey Shestakov, will help you choose and buy a yacht that best suits your needs 45ft 2012 Hunter Deck Salon — HUNTER from our catalogue. Presently, at Shestakov Yacht Sales Inc., we have a wide variety of yachts available on our sale's list. We also work in close contact with all the big yacht manufacturers from all over the world.

If you would like to buy a yacht 45ft 2012 Hunter Deck Salon — HUNTER or would like help answering any questions concerning purchasing, selling or chartering a yacht, please call +1(954)274-4435

TABLE OF CONTENTS

TABLE OF CONTENTS	2
SPECIFICATIONS	5
Overview	5
Basic Information	6
Dimensions	6
Speed, Capacities and Weight	6
Hull and Deck Information	6
DETAILED INFORMATION	7
DIMENSIONS SPECS	7
ACCOMODATIONS	7
SALON and GALLEY	9
ELECTRICAL and ELECTRONICS	11
Mechanical	13
Hull and Deck	13
Sails and Rigging	15
Additional Equipment	16
Comments	17
Manufacturer Provided Description	17
OWNER EXCLUSIONS	17
Exclusions	18
Disclaimer	18
PHOTOS	19
dockside	19
Salon	19
Dinette to Port	19
Sette to Starbd	19
Nav Station	19
Salon - looking aft	19

Galley	20
Galley-2	20
Forward Cabin	20
Forward Head	20
Storage in head	20
Forward Shower	20
Forward cabin lockers & vanity	21
Aft Cabin	21
Aft Cabin - settee	21
aft cabin storage	21
Aft head	21
Aft Shower	21
Engine	22
Cockpit	22
Helm - Port side	22
Helm Starbd	22
Nav instruments	22
Stern seats	22
Entrance to interior	23
Stern view	23
Cockpit from stern	23
Forward deck	23
Fore deck -anchor locker	23
Anchor locker & windlass	23
Stern quarter view	24
layout	24
CONTACTS	25
Contact details	25
Telephones	25

Office hours 25

Address 25

SPECIFICATIONS

Overview

PRICE REDUCED FOR IMMEDIATE SALE

LOW engine hours – Fully air conditioned (dockside power).

Sleeps 6 in Two large cabins, plus convertible dinette in Salon – 2 Heads w/ Showers – Owner's private stateroom Aft.

Large bright Salon with wrap around forward window, opening hatches and ports for ventilation. Seating for 8 comfortably.

Convenient U-shaped Galley with loads of storage, separate front loading refrigerator and freezer.

Easy sailing with all lines led aft to cockpit – Hunter Mainsheet arch for easy sail handling.

Huge cockpit with twin steering wheels, opening table, walk through to swim platform, full Bimini and Dodger.

Wide walk around side decks – large foredeck with anchor locker and windlass

In-Mast Main furling and forward Genoa furling system, electric winch.

Shoal Draft – Kevlar hull re-enforcement - Through-Bolted Hull/Deck Joint w/Full Rubrail

Hunter is acknowledged as the most innovative builder of production sailboats today. Hunters are fast cruising boats that are easy to sail. Their modern design features and high quality construction make sailing safe and comfortable for the whole family. Their popularity has made Hunter the largest sailboat manufacturer in North America.

The 45DS hull is solidly constructed and shaped for lively performance even in rough seas. On deck, the twin wheel configuration provides the helms person with the ultimate in comfort, control and visibility for every point of sail. Transom access from the cockpit is improved with a wide, unobstructed walkway between the leather wrapped wheels. On the centerline of the cockpit is a Corian® table that also functions as a hand hold, foot brace, drink holder, and cold storage bin. It's a multifunctional feature that greatly enhances the comfort and utility of the cockpit.

Basic Information

Category: Cruising Sailboat

Model Year: 2012

Year Built: 2012

Country: United States

Dimensions

LOA: 45' 0" (13.72m)

Beam: 14' 6" (4.42m)

Max Draft: 5' 0" (1.52m)

Clearance: 60' 8" (18.49m)

Speed, Capacities and Weight

Displacement: 22937 Pounds

Water Capacity: 140 Gallons

Holding Tank: 50 Gallons

Fuel Capacity: 66 Gallons

Hull and Deck Information

Hull Material: Fiberglass

DETAILED INFORMATION

DIMENSIONS SPECS

Designer Glenn Henderson

Length..... 45 ft.

LOA..... 44 ft. 10 in 13.66 meters

LWL..... 39 ft. 3 in 11.94 meters

Beam..... 14 ft. 6 in 4.42 meters

Draft 5 ft. 1.52 meters

Displacement 22,937 lbs. 10,404 kegs

Ballast..... 7,389 lbs. 3,352 Kgs

Sail area 833 ft. sq. 77.39 Meters sq.

Mast Height 60 ft. 8 in

Tankage: Fuel 66 gal 250 liters

Water..... 140 gal 530 liters

Holding.... 50

Engine.....Yanmar 54 HP (231 hours)

Bow Thruster by Yacht Thruster

Air Conditioning... 26,000 BTU (2 separate units)

ACCOMMODATIONS

2 staterooms – 2 heads w/showers

Plus, additional double berth in Salon with dinette conversion to sleeping accommodations

FORWARD CABIN - Forward guests will enjoy the Pullman style cabin with a side mounted double berth and storage capacity for two. For convenience, the open vanity is separated from the private head and shower located in the forepeak

Cabin Lighting

Electrical Outlets, AC and DC

Hanging Locker (1), Cedar-Lined

Hatch, Deck, (1) Opening w/Screen

Head, Private w/Shower

Mattress, Innerspring

Shower Sump Pump

Smoke and Carbon Monoxide Detectors

Storage Cabinets (3)

Storage Drawers (3)

Storage Shelving

Under-Berth Storage Space

Vanity, EnSite w/Corian® Countertop and Storage Cabinets

AFT CABIN - Expanded aft stateroom features a queen size berth, large hanging locker, storage galore and private access to the aft head.

Berth, Queen w/Innerspring Mattress and Bedding Package

Cabin Lighting

Design Bedding Fabrics

Electrical Outlets, AC and DC

Hanging Locker, (1) Cedar-Lined

Headboard, Padded

Ports/Hatches, (3) Opening w/Screens

Private Access to Head

Storage Drawers/Bins (5) Around Bed

Vanity w/Corian® Countertop and Mirror

Upgrade to Memory Foam Mattress

Quiet Flush Head System

MAIN HEAD (AFT)

Access Door, Dual

Anti-Bacterial Gelcoat

Electrical Outlets, AC and DC

Hatches, (2) Deck

Ports, (2) Opening, Frosted

Shower Stall w/Adjustable Shower Head, Seat, and Sump Pump

Storage Compartments

Vanity w/Corian Countertop

VESSEL WALK THROUGH

Vessel may be entered both from side opening gates in lifelines and aft swim platform. The cockpit is large with twin steering wheels opening the cockpit space.

Companion way stairs lead to open feeling Salon. U-Shaped Galley is immediately to Port of the stairs with easy access to Salon or cockpit. Forward of the Galley, on Port side, is the U-shaped dinette. On Starbd side is a long settee. There is lots of storage areas under settees and outboard over the settees.

A forward facing Nav station in aft portion of Salon, to Starbd is followed by access to the aft head, also at the foot of the stairs.

A doorway leads aft on the Starbd side providing access to the HUGE master suite aft. This suite has access to the Aft head and shower, a centerline Queen berth, and additional settee to Port. Numerous storage lockers complete the master suite.

Forward of the Salon is the guest cabin with another head and shower in the fore peak.

SALON and GALLEY

SALON – Salon is bright and airy with curved window forward

Accord Shades

Cabin Lighting

Courtesy Floor Lighting

Deck Side Windows, (4) Fixed w/Shades

Deck Windshield ports, Fixed

Deluxe Cushion/Fabric Package

Dinette Table Convertible to Berth

Dinette Table, High Gloss

Dorade Vent (1)

Electrical Outlets, AC and DC

Gloss Finish "Cherry" Woodwork

Handrails, Hardwood on Both Sides

Hardwood Flooring

Hatch, (1) Deck, Opening w/Screens

Selected Hardwood Trim

Smoke and Carbon Monoxide Detectors

Storage Lockers on Hull Sides

Storage Shelving

NAV STATION

Adjustable Chart Light

Chart Table, Opening

Electrical Outlets, AC, DC and Phone Jack

Seat, Wood, Contoured w/Storage

Space for Electronics

Storage Cabinets

GALLEY - The galley size and amenities will enable you to create memorable meals from provisions held in the 45's immense storage reserves.

Corian Countertops w/Backsplash

Hatch, (1) Deck, Opening

Electrical Outlet, AC

Faucet, Chrome Pull-Out Dual Function

Fresh Water System, Pressurized, Hot and Cold

Microwave

Ports, (2) Opening w/Screens

Sinks, Double Stainless Steel w/Cutting Board

Storage Cabinets (2)

Storage Drawers (5)

Storage Pantry w/Shelving

Storage Shelving

Stove, Two Burner, LPG Gimballed w/Oven

Waste Bin,

Built in Front Opening Freezer w/ Stainless Steel Door, and Refrigerator, Front Opening, Stainless Steel

Stove Upgrade to 3 Burners

ELECTRICAL and ELECTRONICS

ELECTRICAL

12-Volt DC Electrical System w/Breaker Panel

40-Hp Yanmar® Diesel Aux Engine w/Two Blade Prop

Alternator, 80-Amp

Battery Box, Engine Start

Battery Boxes (3), House, Size 4D (New Feb. 2016)

Battery Charger, 50 Amp

Bilge Pump, Manual

Bilge Pump, Electric, Primary 1500 GPH

Bilge Pump, Electric, Automatic Secondary 4000 GPH w/Alarm

Cable TV and Phone Jacks

Engine Panel, Deluxe w/Gauges, Alarms and Hour Meter

Fresh Water System, Pressurized, Hot and Cold

Galvanic Isolator

Gauges, Tank for Fuel, Water and Waste

Lights, Deck and Anchor

Navigation Light Package

NMMA Certification On All Systems

Propane Gas System For Cooking

Raymarine® ST-60 Speed and Depth

Shore Power System, 120 Volt w/Isolation Transformer and Cord

Stereo, AM/FM w/CD Player

Sump Pumps, Shower

VHF Radio w/DSC and Stainless Steel Antenna

Waste Holding Tank w/Macerator Pump

Water Heater, 11 Gallon

X-Change-R® Oil Change System

ELECTRONICS - Mostly upgraded (2015) with new control heads

RayMarine 7000+ Autopilot - New display 2016

Raymarine C-80 w/ GPS @ Helm

Raymarine Radar Module Antennae

Raymarine ST60 Wind Machine - New Display 2016

Ray Marine ST60 depth and Speed - New Display 2016

Bose Lifestyle Stereo Entertainment System w/DVD Player

Cockpit Stereo w/ Arch Speakers

23" Flat Panel TV in Main Salon

VHF Remote MIC @ Helm

Mechanical

54 Hp Yanmar® Diesel Aux Engine w/Three Blade Prop (231 hours)

Marine Air Conditioning:

16,000 BTU in Salon with ducting into Forward Stateroom

10,000 BTU in Master Stateroom Aft

Hull and Deck

Barrier Coat, Epoxy w/ Bottom Paint

Anchor Roller, Double Offset

Anchor Well w/Space for Rode and Chain

Anchor Windlass, Electric

Blister Prevent Technology Hull

Bow Pulpit, Stainless Steel

Deck Handrails, Stainless Steel

Dorade Vents (2)

Fresh Water Hookup, Dockside

Hatches, (6) Opening Deck, w/Screens

HKT Kevlar® Hull Reinforcement

Hull, FRP/Balsa Sandwich Above Waterline, Solid FRP bottom

Hull, Structural Grid Reinforcement

Keel, Shoal Draft

Lifelines, Double w/Three Gates and Stainless Steel Stanchions

Locker, (1) Transom Storage

LPG Tank Storage for Two Bottles

Mooring Cleats, (8) Stainless Steel

Nonskid Deck

Ports, (2) Fixed

Ports, (6) Opening, w/Screens

Rubrail w/Stainless Steel Insert

Rudder, Balanced Spade, w/Stainless Steel Shaft

Sliding Companionway Hatch

Swim Platform w/Stainless Steel Telescoping Ladder

Through-Bolted Hull/Deck Joint w/Full Rubrail

Through-Hull Fittings, All Bronze Below Waterline

Windshield Fixed Ports w/Cover

Cockpit:

Cockpit Cushions

Bimini Top

Steering Console with Single Lever Engine Control, Wheel Brake, Lighted Compass, Space for Instruments, Stainless Guard and Lewmar Direct Drive Steering System

Bilge Pump, Manual

Cockpit Traveler Arch, Stainless Steel w/Mainsheet Traveler

Cockpit Grabrail w/Integral Fold-Out Table

Halyard Tail Stowage Wells

Helm Seat, Hinging

Lockers, (3) Storage

Stern Rail Seats, Stainless Steel, w/Drink Holders

Transom Shower, Hot and Cold

Walk-Through Transom w/Swim Platform

Full Bimini top and Dodger (new 2015)

Sails and Rigging

This vessel is equipped with the B& R rig which is well-known for its superior strength and reliability.

PERFORMANCE

Solid Boom Vang

Electric Rigging Winch

In-Mast Furling System

Vertical Battens

Equipment

RIGGING

Boom Vang

Inboard Jib Tracks w/Adjustable Cars

Internal Halyards Led to Cockpit

Jib Furling System

Jib, 110% Furling w/Acrylic Sun Cover

Mainsail, In-mast roller furling

Mainsheet Purchase System, led to top of arch - Traveler, Arch-Mounted for Mainsheet

Mast, Selden®, B&R w/Fractional Sail Plan

Reefing System, Dual Single Line Led Aft

Rigging Line Stoppers and Organizers, Two Sets

Winch Handles (2)

Winch, (1) Rigging, 2-Speed, Self-Tailing, #40

Winch, (1) Rigging, 2-Speed, Self-Tailing, #46

Winches, (2) Jib at Helm, 2-Speed, Self-Tailing, #44

Windex® Wind Indicator

Additional Equipment

Propane grill attached to aft railing

GENERAL SAFETY GROUP

Air Horn

Fortress Anchor and chain (200 ft)

Anti-Bacterial Gelcoat in Head

Carbon Monoxide and Smoke Detectors

Emergency Tiller

Fire Extinguishers (2) Handheld

Fire Extinguishing System, Automatic, Engine Room

Fog Bell

GFI Receptacles

Handheld Flares

High Bilge Water Alarm and Pump

Life Jackets (6)

Reference Book, Chapman's Piloting

Throwable Flotation Cushion

Comments

A very clean and well maintained yacht with low hours (**less than 235 hours on the main engine**). Beautiful cherry finish below decks, dark blue upholstery. Nicely finished and very comfortable with two good sized staterooms, a proper working galley and a forward-facing navigation station with plenty of room for electronics and charts.

On deck the space is well thought out. A walk-through transom makes boarding easy. Plenty of seating, dual helms and a large protective Bimini top. Like all Hunters the sail plan is easy to work with and sailing is fun and the lines are led aft to the safety of the cockpit.

You always get a great value with a Hunter sailboat. But even better are the innovations that the market leader is known for- like ease of sailing with the small (easy to tack) jib, end boom sheeting on the main (easy to haul in) and double ended mainsheet (all sails trimmed from the helm!). Her twin wheels provide exciting side rail steering and a larger, easy walk-thru cockpit. She has the best in-mast furling system (easy to reef and easy to stow) by Selden Spars. Did we mention she is the fastest boat in the fleet? The new generation Glenn Henderson designed hull shows off the unique bow hollow and waterline lengthening stern reflex. The deck profile sports a stylish wraparound windshield, and down below she is much roomier with a huge salon, the preferred Pullman suite forward and a center island queen berth in the master cabin. She's always the crowd favorite for comfort and brightness with her warm all wood cherry interior.

Manufacturer Provided Description

The Hunter 45DS has redefined the Deck Salon concept with the brightest and most open salon ever designed. Oversized deck ports draw in huge volumes of natural light to complement the rich woodwork and airy floorplan. A wraparound windshield dominates the sleek and imposing exterior profile that announces its presence with authority in any harbor. The hull is solidly constructed and shaped for lively performance and a smooth ride, even in rough sea conditions. On deck, dual helm stations deliver the ultimate in comfort, control and visibility for the captain. Hunter's stainless steel Traveler Arch, B & R rig and a unique double-ended mainsheet system provide the crew with effortless sail handling. The large, T-shaped cockpit is well equipped to provide shelter at sea and sociable lounging at anchor. The galley size and amenities will enable you to create memorable meals from provisions held in the 45's immense storage reserves. An expanded aft stateroom features a queen size berth, large hanging locker, storage galore and private access to the aft head. Opening hull and deck ports supply plenty of light and fresh air. Forward, your guests will enjoy the Pullman-style cabin with a side mounted double berth and storage capacity for two. For convenience, the open vanity is separated from the private head and shower located in the forepeak.

OWNER EXCLUSIONS

Owner's personal effects

Tender and Outboard- optional

Exclusions

Owner's personal belongings.

Disclaimer

The Company offers the details of this vessel or yacht in good faith but cannot guarantee or warrant the accuracy of this information nor warrant the condition of the vessel. A buyer should instruct his representatives, agents, or his surveyors, to investigate such details as the buyer desires validated. This vessel or yacht is offered subject to prior sale, price change, or withdrawal without notice.

PHOTOS

dockside



Salon



Dinette to Port



Sette to Starbd



Nav Station



Salon - looking aft



Galley



Galley-2



Forward Cabin



Forward Head



Storage in head



Forward Shower



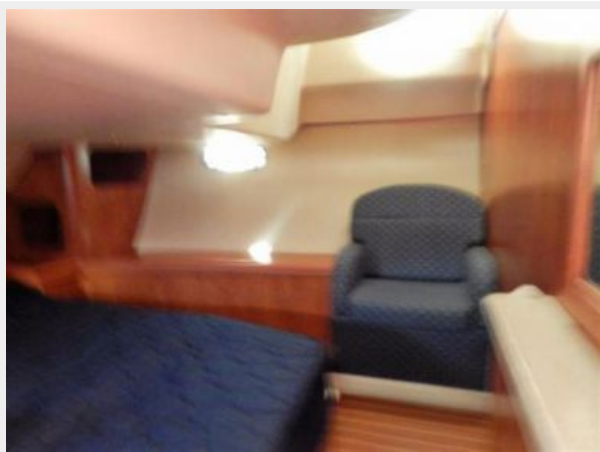
Forward cabin lockers & vanity



Aft Cabin



Aft Cabin - settee



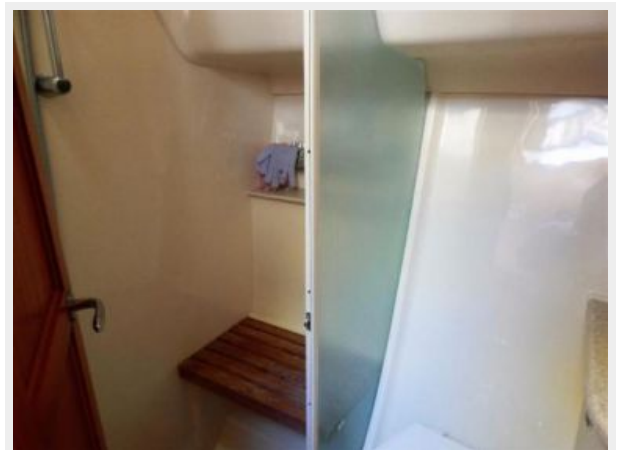
aft cabin storage



Aft head



Aft Shower



Engine



Cockpit



Helm - Port side



Helm Starbd



Nav instruments



Stern seats



Entrance to interior



Stern view



Cockpit from stern



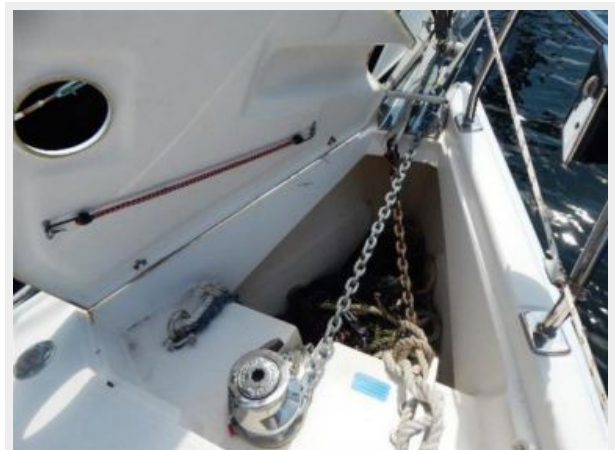
Forward deck



Fore deck -anchor locker



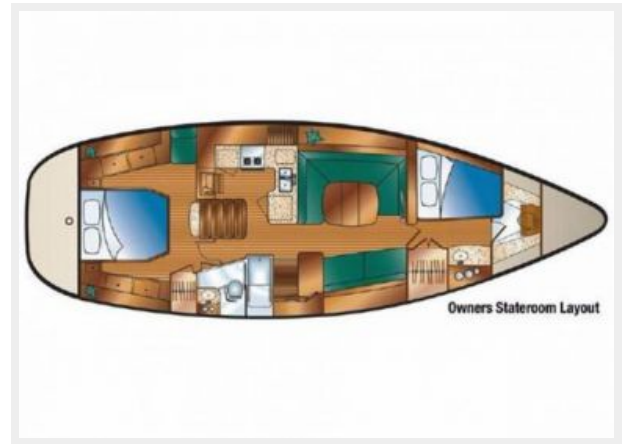
Anchor locker & windlass



Stern quarter view



layout



CONTACTS

Andrey Shestakov, leading yacht broker of the sales department of Shestakov Yacht Sales Inc. Shestakov Yacht Sales Inc., the official representative of the Miami/Fort Lauderdale FL headquarters.

Contact details

Email: andrey@shestakovyachtsales.com

Web: shestakovyachtsales.com/en/

Telephones

USA: +1(954)274-4435

Office hours

Monday – Saturday: **9:00 - 21:00** EDT

Sunday: **closed**

Address



Harbour Towne Marina, 850 NE 3rd St,
STE 213, Dania, FL 33004