

MISS MIMI — HATTERAS



Судостроитель: HATTERAS

Год постройки: 1999

Модель: Катер для спортивной рыбалки

Цена: ЦЕНА ЯХТЫ ПО ЗАПРОСУ

Местонахождение: United States

Длина общая: 55' 0" (16.76m)

Ширина: 17' 3" (5.26m)

Макс. осадка: 5' 4" (1.63m)

Купить **Miss Mimi — HATTERAS** а также выбрать подходящую вам яхту из нашего каталога яхт вам поможет опытный яхтенный брокер Андрей Шестаков. На сегодняшний день компания **Shestakov Yacht Sales Inc.** имеет большое количество яхт в собственном списке продаж, а также тесно сотрудничает со всеми крупными яхтенными производителями по всему миру.

Для того чтобы купить яхту **Miss Mimi — HATTERAS** а также проконсультироваться по любому вопросу связанному с покупкой, продажей, чартером яхт позвоните по телефону **+7(918)465-66-44**.

ОГЛАВЛЕНИЕ

ОГЛАВЛЕНИЕ	2
ХАРАКТЕРИСТИКИ	5
Обзор	5
Основная информация	5
Размеры	5
Скорость, вместимость и масса	5
Размещение	5
Корпус и палуба	5
Информация о двигателе	6
ПОДРОБНОЕ ОПИСАНИЕ	7
Accommodations and Layout	7
Salon	7
Entertainment Center	7
Galley	8
Dining	8
Master Stateroom	8
Master Head	8
VIP Stateroom	9
Guest Stateroom	9
Electronics and Navigational Equipment	9
Mechanical Equipment and Engines	9
Deck Equipment and Hull	10
Tuna Tower	10
Exclusions	10
Исключения	10
Отказ от ответственности	11
ФОТОГРАФИИ	12
Port Profile.jpg	12

Salon.jpg	12
Salon-2.jpg	12
Salon-3.jpg	12
Salon-4.jpg	12
Salon-5.jpg	12
Salon Ice Maker.jpg	13
Salon TV.jpg	13
Dinette.jpg	13
Galley.jpg	13
Galley-2.jpg	13
Galley-3.jpg	13
Galley-4.jpg	14
Master SR.jpg	14
Master SR-2.jpg	14
Master Head.jpg	14
Master Head-2.jpg	14
VIP SR.jpg	14
VIP SR-2.jpg	15
VIP SR-3.jpg	15
VIP Head.jpg	15
VIP Head-2.jpg	15
Bunk Room.jpg	15
Bunk Room-2.jpg	15
Flybridge.jpg	16
Flybridge-2.jpg	16
Helm.jpg	16
Helm-2.jpg	16
Helm-3.jpg	16
Helm-4.jpg	16

Helm-5.jpg	17
Helm-6.jpg	17
Helm-7.jpg	17
Helm-8.jpg	17
Helm-9.jpg	17
Cockpit.jpg	17
Cockpit-2.jpg	18
Cockpit-3.jpg	18
Cockpit-4.jpg	18
Chair.jpg	18
Cockpit Freezer and Bait Station.jpg	18
Livewell.jpg	18
Breakers.jpg	19
Engine Room.jpg	19
Port Generator.jpg	19
Stbd Generator.jpg	19
Teaser Reels.jpg	19
Tower.jpg	19
Tower-2.jpg	20
Port Bow.jpg	20
Port Bow-2.jpg	20
Stbd Profile.jpg	20
Transom Profile.jpg	20
Transom.jpg	20
КОНТАКТЫ	21
Контактная информация	21
Телефоны	21
Время работы	21
Адрес	21

ХАРАКТЕРИСТИКИ

Обзор

Weather your looking to fish the tournament circuit or just cruise the islands this Hatteras Has everything you need. New enclosure, new bridge cushions, updated Garmin plotter, ice maker, water maker, two generators, CAT power, the list goes on. She is turn key and ready to go. This boat is owned by a very knowledgeable shipwright and two boat owner that is ready to have her sold. Call and schedule your showing today.

Основная информация

Тип судна: Катер для спортивной рыбалки

Модельный год: 1999

Год постройки: 1999

Страна: United States

Размеры

Длина общая: 55' 0" (16.76m)

Ширина: 17' 3" (5.26m)

Макс. осадка: 5' 4" (1.63m)

Длина привального бруса: 55' 2" (16.81m)

Скорость, вместимость и масса

Водоизмещение: 70000 Pounds

Чистый вес: 33 Pounds

Размещение

Всего кают: 3

Корпус и палуба

Материал корпуса: Fiberglass

Информация о двигателе

Производитель: CAT

Модель: 3412-E

Тип двигателя: Inboard

Тип топлива: Diesel

ПОДРОБНОЕ ОПИСАНИЕ

Accommodations and Layout

Entering the salon you immediately notice the exceptionally large amount of interior volume for a convertible of this size. This 55 Hatteras features a gorgeous solid glossy teak interior with raised panel cabinetry and luxurious leather upholstery. There is plenty of natural light due to the sleek new Hatteras frameless window with wood blinds to compliment the teak wood interior. The L-shaped leather seating area is further complimented by a custom coffee table to port, a single chair to starboard with additional stowage cabinets behind it. Forward is an open U-shaped galley to port and a L-shaped leather dinette to starboard. The entertainment cent is forward of the dinette which is equipped with a KVH Tracvision for satellite television, Updated flat screen TV, Yamaha Tuner-Amp, Yamaha CD player and Yamaha Surround Sound home theatre system with sub-woofer which provide the owner with all the luxuries found at home. Heading down into the companionway, you will find the master stateroom to port with a queen size bed, ensuite head with stall shower and plenty of stowage. Forward of the master stateroom is the VIP stateroom which also has a queen size bed, hanging lockers and head with a stall shower. There is a third guest stateroom to port with over and under twin bunks, a large hanging locker and additional storage compartments providing both guest with ample stowage. No expense was spared when outfitting this fishing machine as she has all of the finest machinery and equipment. This vessel has the Caterpillar 3412's with Caterpillar extended warranties, full tower, power retractable fly bridge electronics console, CAT Vision, single lever controls and many other upgrades. What makes her particularly impressive when compared to other 55' convertibles is her huge list of options and equipment list as well as her overall condition as she has been maintained with an open checkbook policy and an experienced full-time captain.

Salon

- Glossy teak wood interior w/raised paneling
- L-shaped leather couch w/ ample stowage beneath
- Custom decor throughout Custom coffee table
- Single chair with stowage
- L-Shaped leather dinette with Corian table
- Wood blinds with tinted salon windows
- U-Line icemaker
- Central vacuum system
- Cabinetry throughout

Entertainment Center

- Audio-Video entertainment equipment

- Flatscreen tv
- Sharp VHS
- Yamaha tuner-amp
- Yamaha Surround Sound and sub-woofer KVH tracvision for SAT TV w/2 RCA RF DSS receivers
- Yamaha CD player
- Channel Vision CVT3-facilitates viewing of both SAT receivers and Salon
- VCR in all TV location throughout vessel
- Salon AMP feeds Bose 151 Environmental speakers in cockpit and engine room 2/separate volume controls

Galley

- Sub-Zero under counter AC refrigerator and freezer drawer units
- Raised panel teak cabinets
- Corian solid surface countertops
- Corian sink with faucet
- Four (4) burner electric cook top
- Microwave/convection oven Garbage disposal
- Icemaker
- Water level gauges
- AC and DC light fixtures
- Ample cabinet stowage

Dining

- L-shaped dinette with Corian table and more stowage space beneath.

Master Stateroom

- Located down companionway to port:
- Queen size island bed with stowage underneath
- Large cedar lined hanging lockers
- Color Panasonic 20" TV-VCR combo Clarion radio-CD player
- Kenwood stereo system
- Nightstand with TEAK surface

Master Head

- Vanity to port

- Large stall shower
- Full size Vacu-flush head

VIP Stateroom

- Forward of the Master Stateroom is the VIP Stateroom which features a queen size bed, hanging lockers and head with a stall shower.

Guest Stateroom

- Located to port with over and under twin bunks, a large hanging locker and additional stowage compartments providing both guest with ample stowage space.

Electronics and Navigational Equipment

- Garmin 5212 plotter
- Garmin 5208 plotter
- Catvision
- Mather single lever controls
- ZF trolling valves
- Furuno 7112 72 mile radar
- Furuno FCU - 1000 sounder and plotter
- (2) SEA 156 VHF radios
- DEA 235R SSB radio
- KVH SAT phone
- ACR remote searchlight
- Datamarine depth display
- Clarion AM-FM-CD player with remote mounted control
- Dytek 1800 Sea Temp
- Robertson A20 autopilot fully coupled

Mechanical Equipment and Engines

- Garmin 5212 plotter
- Garmin 5208 plotter
- Catvision
- Mather single lever controls
- ZF trolling valves
- Furuno 7112 72 mile radar
- Furuno FCU - 1000 sounder and plotter

- (2) SEA 156 VHF radios
- DEA 235R SSB radio
- KVH SAT phone
- ACR remote searchlight
- Datamarine depth display
- Clarion AM-FM-CD player with remote mounted control
- Dytek 1800 Sea Temp
- Robertson A20 autopilot fully coupled

Deck Equipment and Hull

- Murray Brothers fighting chair with foot rests
- Eskimo ice machine
- Full tackle and prep center w/sink
- Double size freezer
- Full-size removable insulated fish box w/macerator
- Molded-in transom live well w/drain
- (16) rod holders
- Non-skid surface
- Cockpit engine room access
- Access aluminum ladder to flybridge with acrylic steps
- Port and Starboard hatches to lazarette and fuel tank connections
- Cockpit flood lights
- Freshwater/Saltwater washdown
- Dockside water connection with pressure reducer
- Deep storage tub

Tuna Tower

- Pipewelders Tower
- Rupp 41' riggers
- Northstar 952 GOS plotter
- ICOM M-702 VHF radio

Exclusions

- Owner's personal items

Исключения

При продаже яхты исключаются личные вещи владельца.

Отказ от ответственности

Компания предоставляет описание судна или яхты добросовестно, но не может гарантировать точность этой информации, а также не ручается за техническое состояние. Покупатель должен проинструктировать своих агентов или оценщиков исследовать представленную информацию более подробно, по собственному желанию. Продажа судна или яхты, изменение цены или снятие с продажи будет происходить без предварительного уведомления.

ФОТОГРАФИИ

Port Profile.jpg



Salon.jpg



Salon-2.jpg



Salon-3.jpg



Salon-4.jpg



Salon-5.jpg



Salon Ice Maker.jpg



Salon TV.jpg



Dinette.jpg



Galley.jpg



Galley-2.jpg



Galley-3.jpg



Galley-4.jpg



Master SR.jpg



Master SR-2.jpg



Master Head.jpg



Master Head-2.jpg



VIP SR.jpg



VIP SR-2.jpg



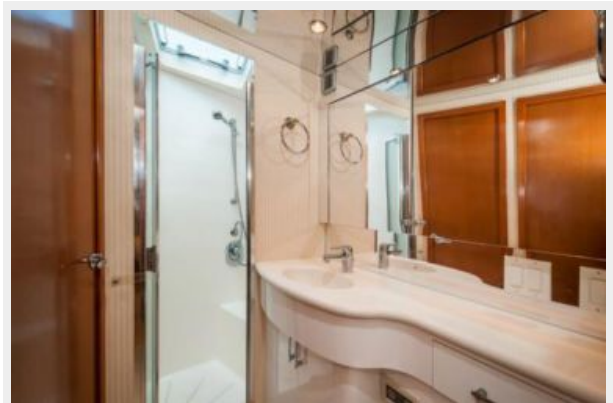
VIP SR-3.jpg



VIP Head.jpg



VIP Head-2.jpg



Bunk Room.jpg



Bunk Room-2.jpg



Flybridge.jpg



Flybridge-2.jpg



Helm.jpg



Helm-2.jpg



Helm-3.jpg



Helm-4.jpg



Helm-5.jpg



Helm-6.jpg



Helm-7.jpg



Helm-8.jpg



Helm-9.jpg



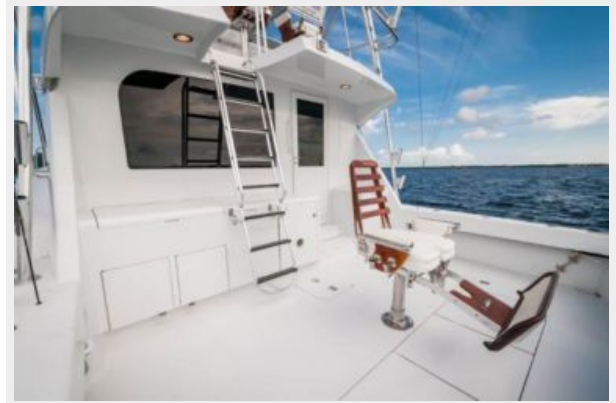
Cockpit.jpg



Cockpit-2.jpg



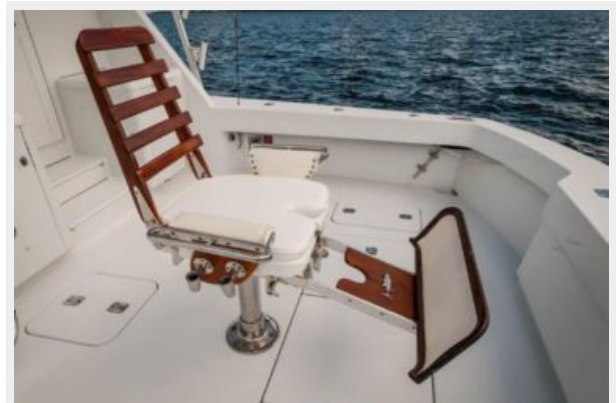
Cockpit-3.jpg



Cockpit-4.jpg



Chair.jpg



Cockpit Freezer and Bait Station.jpg



Livewell.jpg



Breakers.jpg



Engine Room.jpg



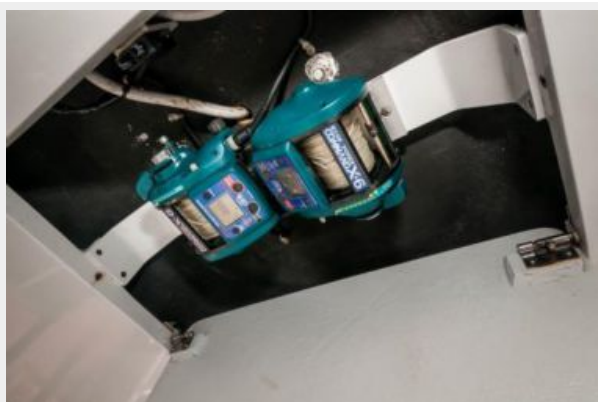
Port Generator.jpg



Stbd Generator.jpg



Teaser Reels.jpg



Tower.jpg



Tower-2.jpg



Port Bow.jpg



Port Bow-2.jpg



Stbd Profile.jpg



Transom Profile.jpg



Transom.jpg



КОНТАКТЫ

Андрей Шестаков (Andrey Shestakov) – ведущий яхтенный брокер отдела продаж яхт и судов компании Shestakov Yacht Sales Inc. Официальный представитель Shestakov Yacht Sales Inc. для русскоговорящих клиентов в центральном офисе компании в Майами/Форт Лодердейл/Флорида/США.

Контактная информация

Email: andrey@shestakovyachtsales.com

Web: shestakovyachtsales.com

Телефоны

Краснодарский край: **+7(918)465-66-44**

США, Майами, Флорида: **+1(954)274-4435**

Время работы

Понедельник – Суббота: **9:00 - 21:00**
EDT

Воскресенье: **Закрито**

Адрес



Harbour Towne Marina, 850 NE 3rd St,
STE 213, Dania, FL 33004