

NERO — PRINCESS YACHTS



Builder: PRINCESS YACHTS

Year Built: 2014

Model: Motor Yacht

Price: PRICE ON APPLICATION

Location: United States

LOA: 60' 0" (18.29m)

Beam: 15' 10" (4.83m)

Max Draft: 4' 2" (1.27m)

Cruise Speed: 28 Kts. (32 MPH)

Max Speed: 32 Kts. (37 MPH)

Our experienced yacht broker, Andrey Shestakov, will help you choose and buy a yacht that best suits your needs **NERO — PRINCESS YACHTS** from our catalogue. Presently, at Shestakov Yacht Sales Inc., we have a wide variety of yachts available on our sale's list. We also work in close contact with all the big yacht manufacturers from all over the world.

If you would like to buy a yacht **NERO — PRINCESS YACHTS** or would like help answering any questions concerning purchasing, selling or chartering a yacht, please call **+1(954)274-4435**

TABLE OF CONTENTS

TABLE OF CONTENTS	2
SPECIFICATIONS	5
Basic Information	5
Dimensions	5
Speed, Capacities and Weight	5
Accommodations	5
Hull and Deck Information	5
Engine Information	6
DETAILED INFORMATION	7
Remarks	7
Accommodations	7
Deck Saloon	7
Galley	7
Master Stateroom	7
VIP Stateroom	8
Guest Stateroom, Starboard	8
Lower Helm	8
Flybridge	9
Electronics & Navigational Equipment	9
Cockpit	9
Deck Equipment	9
Audio/Video & Communications	10
Engine Room	10
Exclusions	10
Disclaimer	10
PHOTOS	11
Nero	11
Nero	11

Aft Deck	11
Aft Deck	11
Aft Deck	11
Aft Deck	11
Flybridge	12
Flybridge	12
Flybridge	12
Flybridge	12
Bow	12
Bow	12
Port Passageway	13
Port Passageway	13
Stern	13
Lower Helm	13
Lower Helm	14
Salon	14
Salon	14
Salon	14
Salon	14
Salon	14
Galley	15
Galley	15
Galley	15
Dinette	15
Dinette	15
Master Stateroom	15
Master Stateroom	16
Master Stateroom	16
Master Stateroom	16

Master Head	16
Master Head	17
Forward Master	17
Forward Head	17
Forward Master	17
Guest Stateroom	18
Guest Stateroom	18
Guest Head	18
Laundry Room	18
Crew	19
Crew	19
Engine Room	19
Engine Room	19
Engine Room	19
Engine Room	19
Engine Room	20
Engine Room	20
CONTACTS	21
Contact details	21
Telephones	21
Office hours	21
Address	21

SPECIFICATIONS

Basic Information

Category: Motor Yacht

Model Year: 2015

Year Built: 2014

Country: United States

Dimensions

LOA: 60' 0" (18.29m)

Beam: 15' 10" (4.83m)

Max Draft: 4' 2" (1.27m)

Speed, Capacities and Weight

Cruise Speed: 28 Kts. (32 MPH)

Max Speed: 32 Kts. (37 MPH)

Displacement: 67241 Pounds

Water Capacity: 210 Gallons

Fuel Capacity: 745 Gallons

Accommodations

Total Cabins: 3

Total Heads: 3

Hull and Deck Information

Hull Material: Fiberglass

Engine Information

Engines: 2

Manufacturer: Caterpillar

Model: C18

Engine Type: Inboard

Fuel Type: Diesel

DETAILED INFORMATION

Remarks

Contemporary style and understated elegance come together with exhilarating performance, unrivaled accommodation and genuine long range cruising ability.

Accommodations

- All cabins and bathrooms feature opening portholes
- All cabins feature 220/240v power points
- All mattresses pocket sprung (excluding crew)
- All bathrooms feature full shower stalls, electric freshwater toilets, extractor fan and 240v shaver points
- A combination washer/dryer is fitted in the lower lobby

Deck Saloon

- Triple opening stainless steel, steel framed sliding doors to aft cockpit
- U-shaped sofa with coffee table
- Two seater sofa to port
- Entertainment centre incorporating 48" LED TV with electric raise/lower mechanism and DVD, radio/MP3 system with surround sound system
- Sideboard units with refrigerator, bottle and glass storage and icemaker
- Dining area with U-shaped seating and two additional stools (to seat 6 in total)
- Harman kardon 5.1 Bluray system & KEF speakers

Galley

- 4-zone ceramic hob
- Combination microwave/conventional oven with a grill
- Twin stainless steel sinks with mixer tap
- Full height refrigerator/freezer
- Electrically operated sliding glass partition from aft saloon
- Garbage disposal
- Galley Avonite: Carrara White

Master Stateroom

- Large double bed with drawers below
- Twin bedside tables
- Wardrobe with shelves
- Dressing table
- Sofa
- 40" LED TV
- Stereo radio, DVD, MP3
- Harman Kardon 2.1 Bluray system and KEF speakers
- Overhead and individual berth lights
- En suite bathroom

VIP Stateroom

- Large double bed with drawers below
- Wardrobe with shelves
- Vanity unit
- Storage lockers and drawers
- Deck hatch with fly screen and blind
- Stowage location for (2) dinette stools
- Overhead and individual berth lights
- En suite bathroom with day access
- 28" LED TV with AM/FM stereo CD/DVD player

Guest Stateroom, Starboard

- (2) Single beds (with the option of powered conversion to double)
- Wardrobe with shelves
- Storage lockers
- Overhead and individual berth lights
- En suite bathroom
- 22" LED TV with AM/FM stereo CD/DVD player

Lower Helm

- Twin helm seats with fore and aft adjustment for helmsman
- Electric opening windows at helm position and port side
- Full engine instrumentation including fuel gauges, exhaust temperature, fuel contamination alarms, rudder position indicator
- Navigation system including colour radar, GPS and chartplotter, VHF/RT, speed and distance log, echo sounder with alarm, autopilot and high speed magnetic compass
- Controls for bow thruster, windscreen wipers, bilge pump and trim tabs (with indicator)
- Chart table with light and chart stowage

- 24v and 220/240v electrical control panels
- 12v outlet
- Red night lighting

Flybridge

- Dual station instrumentation, controls and alarm system including VHF/RT, speed and distance log, echo sounder with alarm and autopilot
- U-shaped seating area and teak table with removable centre section
- L-shaped seat (converts to sunbed)
- Radio/iPod/MP3 with waterproof speakers
- Wetbar including sink with electric barbecue and top loading coolbox
- When optional hardtop is selected a sunbed is fitted aft with forward facing seats to starboard side
- Fuel gauges at lower helm position

Electronics & Navigational Equipment

- Voltage stabilizer transformers
- Galvanic isolator on secondary cord
- Glendinning cablemasters
- Foredeck freshwater washdown
- Central vacuum
- (2) Garmin GPSMAP8212 chartplotter/GPS
- (2) Garmin GPSMAP8212 chartplotter/GPS
- Garmin GMR604 6kw Open Array Radar
- Garmin GMI20 data repeater
- Garmin VHF300 handset

Cockpit

- U-shaped seating and teak folding table
- Locker housing 240V shore support inlet and cable storage
- Lockable gas strut assisted hatch to engine room
- Transom gate leading to bathing platform with electro-hydraulic raise/lower mechanism, fold away swimming ladder, hot and cold shower, storage and deck light
- Storage locker for fenders and life raft
- Cockpit cover
- Remote fuel cocks in cockpit locker

Deck Equipment

- Additional anchor chain (to total 197 ft)
- Side boarding gates
- GRP Flybridge hardtop (including lighting)
- 10'6" Palm Beach tender with Yamaha 30 HP

Audio/Video & Communications

Cockpit speakers connected to flybridge stereo

Engine Room

- Twin CAT C18 1015 HP
- Variable speed bow and stern thrusters
- Oil changer for engines and generator
- (6) Automatic electric bilge pumps
- High capacity manual bilge pump with valve system and suction points in same areas
- Fuel filters on port and starboard side decks
- High capacity duplex fuel filters/water traps with audible and visual fuel contamination warning system
- 159 gal/191 US gal/7201 plus 16 gal/19 US gal/731 hot water calorifier and heated by engines and 240v immersion heater
- Water level gauge
- Deck filler
- Automatic/manual override fire extinguishers in engine room
- Hand operated fire extinguishers in all cabins, galley and lower helm

Exclusions

Owner's personal belongings.

Disclaimer

The Company offers the details of this vessel or yacht in good faith but cannot guarantee or warrant the accuracy of this information nor warrant the condition of the vessel. A buyer should instruct his representatives, agents, or his surveyors, to investigate such details as the buyer desires validated. This vessel or yacht is offered subject to prior sale, price change, or withdrawal without notice.

PHOTOS

Nero



Nero



Aft Deck



Aft Deck



Aft Deck



Aft Deck



Flybridge



Flybridge



Flybridge



Flybridge



Bow



Bow



Port Passageway



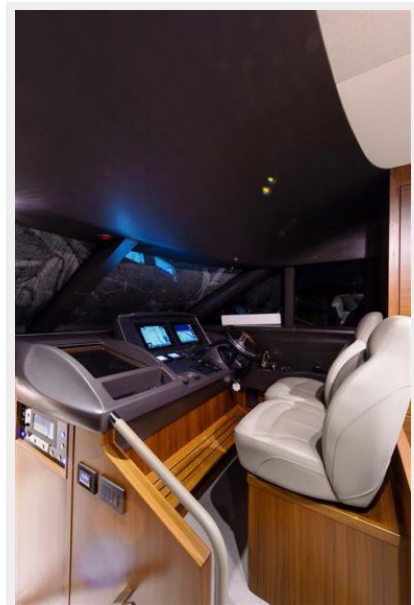
Port Passageway



Stern



Lower Helm



Lower Helm



Salon



Salon



Salon



Salon



Salon



Galley



Galley



Galley



Dinette



Dinette



Master Stateroom



Master Stateroom



Master Stateroom



Master Stateroom



Master Head



Master Head



Forward Master



Forward Head



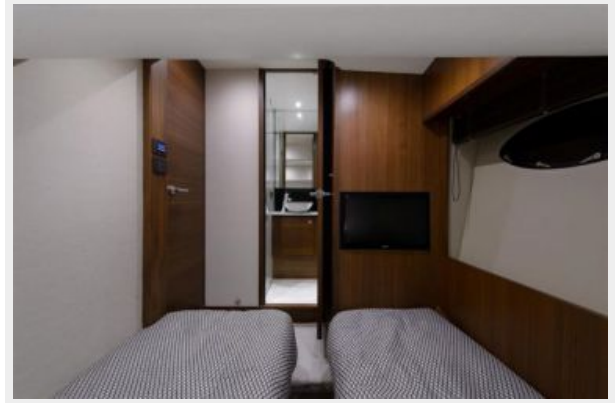
Forward Master



Guest Stateroom



Guest Stateroom



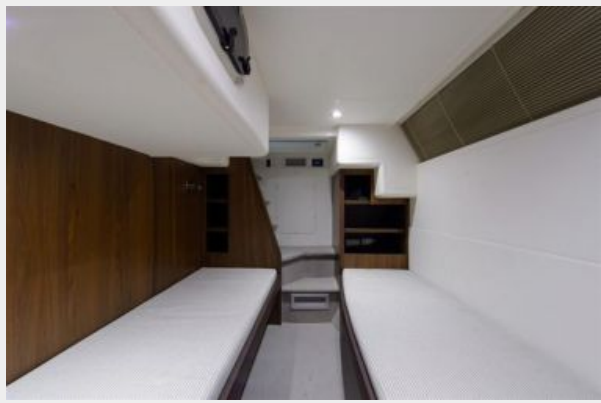
Guest Head



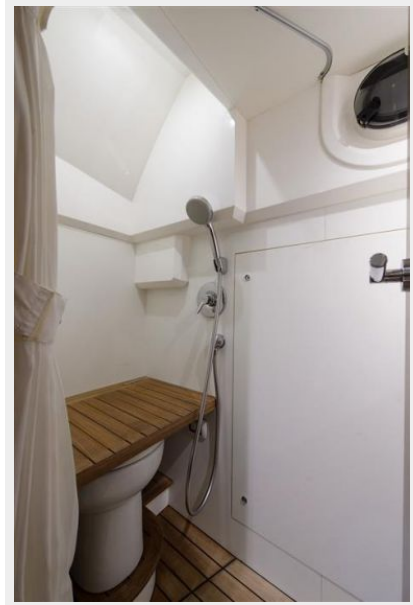
Laundry Room



Crew



Crew



Engine Room



Engine Room



Engine Room



Engine Room



Engine Room



Engine Room



CONTACTS

Andrey Shestakov, leading yacht broker of the sales department of Shestakov Yacht Sales Inc. Shestakov Yacht Sales Inc., the official representative of the Miami/Fort Lauderdale FL headquarters.

Contact details

Email: andrey@shestakovyachtsales.com

Web: shestakovyachtsales.com/en/

Telephones

USA: +1(954)274-4435

Office hours

Monday – Saturday: **9:00 - 21:00** EDT

Sunday: **closed**

Address



Harbour Towne Marina, 850 NE 3rd St,
STE 213, Dania, FL 33004