

## NERO — PRINCESS YACHTS



**Судостроитель:** PRINCESS YACHTS

**Год постройки:** 2014

**Модель:** Моторная яхта

**Цена:** **ЦЕНА ЯХТЫ ПО ЗАПРОСУ**

**Местонахождение:** United States

**Длина общая:** 60' 0" (18.29m)

**Ширина:** 15' 10" (4.83m)

**Макс. осадка:** 4' 2" (1.27m)

**Крейс. скорость:** 28 Kts. (32 MPH)

**Макс. скорость:** 32 Kts. (37 MPH)

Купить **NERO — PRINCESS YACHTS** а также выбрать подходящую вам яхту из нашего каталога яхт вам поможет опытный яхтенный брокер Андрей Шестаков. На сегодняшний день компания **Shestakov Yacht Sales Inc.** имеет большое количество яхт в собственном списке продаж, а также тесно сотрудничает со всеми крупными яхтенными производителями по всему миру.

Для того чтобы купить яхту **NERO — PRINCESS YACHTS** а также проконсультироваться по любому вопросу связанному с покупкой, продажей, чартером яхт позвоните по телефону **+7(918)465-66-44**.

# ОГЛАВЛЕНИЕ

ОГЛАВЛЕНИЕ	2
ХАРАКТЕРИСТИКИ	5
Основная информация	5
Размеры	5
Скорость, вместимость и масса	5
Размещение	5
Корпус и палуба	5
Информация о двигателе	6
ПОДРОБНОЕ ОПИСАНИЕ	7
Remarks	7
Accommodations	7
Deck Saloon	7
Galley	7
Master Stateroom	7
VIP Stateroom	8
Guest Stateroom, Starboard	8
Lower Helm	8
Flybridge	9
Electronics & Navigational Equipment	9
Cockpit	9
Deck Equipment	9
Audio/Video & Communications	10
Engine Room	10
Исключения	10
Отказ от ответственности	10
ФОТОГРАФИИ	11
Nero	11
Nero	11

Aft Deck	11
Aft Deck	11
Aft Deck	11
Aft Deck	11
Flybridge	12
Flybridge	12
Flybridge	12
Flybridge	12
Bow	12
Bow	12
Port Passageway	13
Port Passageway	13
Stern	13
Lower Helm	13
Lower Helm	14
Salon	14
Salon	14
Salon	14
Salon	14
Salon	14
Galley	15
Galley	15
Galley	15
Dinette	15
Dinette	15
Master Stateroom	15
Master Stateroom	16
Master Stateroom	16
Master Stateroom	16

---

Master Head	16
Master Head	17
Forward Master	17
Forward Head	17
Forward Master	17
Guest Stateroom	18
Guest Stateroom	18
Guest Head	18
Laundry Room	18
Crew	19
Crew	19
Engine Room	19
Engine Room	19
Engine Room	19
Engine Room	19
Engine Room	20
Engine Room	20
КОНТАКТЫ	21
Контактная информация	21
Телефоны	21
Время работы	21
Адрес	21

# ХАРАКТЕРИСТИКИ

## Основная информация

Тип судна: Моторная яхта

Модельный год: 2015

Год постройки: 2014

Страна: United States

## Размеры

Длина общая: 60' 0" (18.29m)

Ширина: 15' 10" (4.83m)

Макс. осадка: 4' 2" (1.27m)

## Скорость, вместимость и масса

Крейс. скорость: 28 Kts. (32 MPH)

Макс. скорость: 32 Kts. (37 MPH)

Водоизмещение: 67241 Pounds

Вместимость воды: 210 Gallons

Объем топливного бака: 745 Gallons

## Размещение

Всего кают: 3

Всего ком. состава: 3

## Корпус и палуба

Материал корпуса: Fiberglass

## Информация о двигателе

---

**Двигатели:** 2

**Производитель:** Caterpillar

**Модель:** C18

**Тип двигателя:** Inboard

**Тип топлива:** Diesel

---

# ПОДРОБНОЕ ОПИСАНИЕ

---

## Remarks

---

Contemporary style and understated elegance come together with exhilarating performance, unrivaled accommodation and genuine long range cruising ability.

## Accommodations

---

- All cabins and bathrooms feature opening portholes
- All cabins feature 220/240v power points
- All mattresses pocket sprung (excluding crew)
- All bathrooms feature full shower stalls, electric freshwater toilets, extractor fan and 240v shaver points
- A combination washer/dryer is fitted in the lower lobby

## Deck Saloon

---

- Triple opening stainless steel, steel framed sliding doors to aft cockpit
- U-shaped sofa with coffee table
- Two seater sofa to port
- Entertainment centre incorporating 48" LED TV with electric raise/lower mechanism and DVD, radio/MP3 system with surround sound system
- Sideboard units with refrigerator, bottle and glass storage and icemaker
- Dining area with U-shaped seating and two additional stools (to seat 6 in total)
- Harman kardon 5.1 Bluray system & KEF speakers

## Galley

---

- 4-zone ceramic hob
- Combination microwave/conventional oven with a grill
- Twin stainless steel sinks with mixer tap
- Full height refrigerator/freezer
- Electrically operated sliding glass partition from aft saloon
- Garbage disposal
- Galley Avonite: Carrara White

## Master Stateroom

---

- Large double bed with drawers below
- Twin bedside tables
- Wardrobe with shelves
- Dressing table
- Sofa
- 40" LED TV
- Stereo radio, DVD, MP3
- Harman Kardon 2.1 Bluray system and KEF speakers
- Overhead and individual berth lights
- En suite bathroom

---

## VIP Stateroom

---

- Large double bed with drawers below
- Wardrobe with shelves
- Vanity unit
- Storage lockers and drawers
- Deck hatch with fly screen and blind
- Stowage location for (2) dinette stools
- Overhead and individual berth lights
- En suite bathroom with day access
- 28" LED TV with AM/FM stereo CD/DVD player

---

## Guest Stateroom, Starboard

---

- (2) Single beds (with the option of powered conversion to double)
- Wardrobe with shelves
- Storage lockers
- Overhead and individual berth lights
- En suite bathroom
- 22" LED TV with AM/FM stereo CD/DVD player

---

## Lower Helm

---

- Twin helm seats with fore and aft adjustment for helmsman
- Electric opening windows at helm position and port side
- Full engine instrumentation including fuel gauges, exhaust temperature, fuel contamination alarms, rudder position indicator
- Navigation system including colour radar, GPS and chartplotter, VHF/RT, speed and distance log, echo sounder with alarm, autopilot and high speed magnetic compass
- Controls for bow thruster, windscreen wipers, bilge pump and trim tabs (with indicator)
- Chart table with light and chart stowage



- 24v and 220/240v electrical control panels
- 12v outlet
- Red night lighting

---

## Flybridge

---

- Dual station instrumentation, controls and alarm system including VHF/RT, speed and distance log, echo sounder with alarm and autopilot
- U-shaped seating area and teak table with removable centre section
- L-shaped seat (converts to sunbed)
- Radio/iPod/MP3 with waterproof speakers
- Wetbar including sink with electric barbecue and top loading coolbox
- When optional hardtop is selected a sunbed is fitted aft with forward facing seats to starboard side
- Fuel gauges at lower helm position

---

## Electronics & Navigational Equipment

---

- Voltage stabilizer transformers
- Galvanic isolator on secondary cord
- Glendinning cablemasters
- Foredeck freshwater washdown
- Central vacuum
- (2) Garmin GPSMAP8212 chartplotter/GPS
- (2) Garmin GPSMAP8212 chartplotter/GPS
- Garmin GMR604 6kw Open Array Radar
- Garmin GMI20 data repeater
- Garmin VHF300 handset

---

## Cockpit

---

- U-shaped seating and teak folding table
- Locker housing 240V shore support inlet and cable storage
- Lockable gas strut assisted hatch to engine room
- Transom gate leading to bathing platform with electro-hydraulic raise/lower mechanism, fold away swimming ladder, hot and cold shower, storage and deck light
- Storage locker for fenders and life raft
- Cockpit cover
- Remote fuel cocks in cockpit locker

---

## Deck Equipment

---

- Additional anchor chain (to total 197 ft)
- Side boarding gates
- GRP Flybridge hardtop (including lighting)
- 10'6" Palm Beach tender with Yamaha 30 HP

## Audio/Video & Communications

---

Cockpit speakers connected to flybridge stereo

## Engine Room

---

- Twin CAT C18 1015 HP
- Variable speed bow and stern thrusters
- Oil changer for engines and generator
- (6) Automatic electric bilge pumps
- High capacity manual bilge pump with valve system and suction points in same areas
- Fuel filters on port and starboard side decks
- High capacity duplex fuel filters/water traps with audible and visual fuel contamination warning system
- 159 gal/191 US gal/7201 plus 16 gal/19 US gal/731 hot water calorifier and heated by engines and 240v immersion heater
- Water level gauge
- Deck filler
- Automatic/manual override fire extinguishers in engine room
- Hand operated fire extinguishers in all cabins, galley and lower helm

## Исключения

---

При продаже яхты исключаются личные вещи владельца.

## Отказ от ответственности

---

Компания предоставляет описание судна или яхты добросовестно, но не может гарантировать точность этой информации, а также не ручается за техническое состояние. Покупатель должен проинструктировать своих агентов или оценщиков исследовать представленную информацию более подробно, по собственному желанию. Продажа судна или яхты, изменение цены или снятие с продажи будет происходить без предварительного уведомления.

# ФОТОГРАФИИ

**Nero**



**Nero**



**Aft Deck**



**Aft Deck**



**Aft Deck**



**Aft Deck**



**Flybridge**



**Flybridge**



**Flybridge**



**Flybridge**



**Bow**



**Bow**



**Port Passageway**



**Port Passageway**



**Stern**



**Lower Helm**



**Lower Helm**



**Salon**



**Salon**



**Salon**



**Salon**



**Salon**



**Galley**



**Galley**



**Galley**



**Dinette**



**Dinette**



**Master Stateroom**



**Master Stateroom**



**Master Stateroom**



**Master Stateroom**



**Master Head**





**Master Head**



**Forward Master**



**Forward Head**



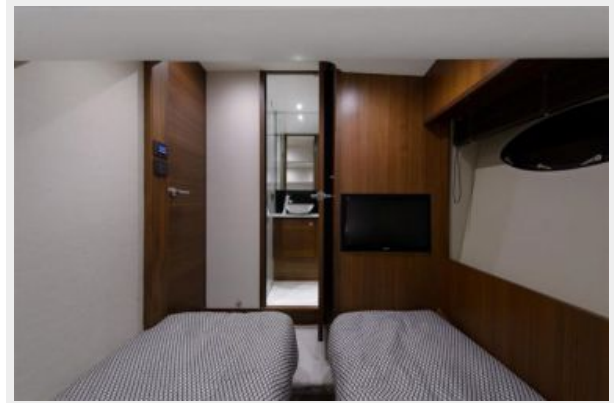
**Forward Master**



**Guest Stateroom**



**Guest Stateroom**



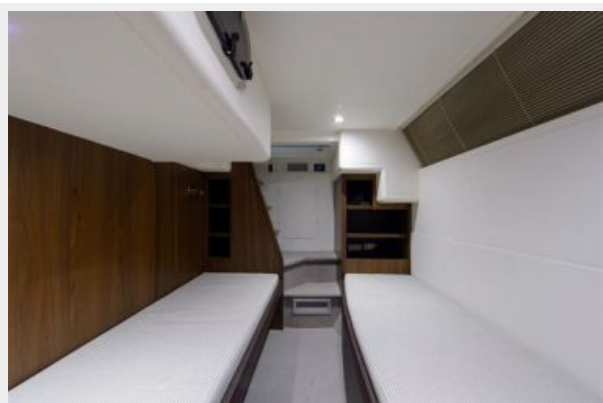
**Guest Head**



**Laundry Room**



Crew



Crew



Engine Room



Engine Room



Engine Room



Engine Room



**Engine Room**



**Engine Room**



# КОНТАКТЫ

---

Андрей Шестаков (Andrey Shestakov) – ведущий яхтенный брокер отдела продаж яхт и судов компании Shestakov Yacht Sales Inc. Официальный представитель Shestakov Yacht Sales Inc. для русскоговорящих клиентов в центральном офисе компании в Майами/Форт Лодердейл/Флорида/США.

## Контактная информация

---

Email: [andrey@shestakovyachtsales.com](mailto:andrey@shestakovyachtsales.com)

Web: [shestakovyachtsales.com](http://shestakovyachtsales.com)

## Телефоны

---

Краснодарский край: **+7(918)465-66-44**

США, Майами, Флорида: **+1(954)274-4435**

## Время работы

---

Понедельник – Суббота: **9:00 - 21:00**  
EDT

Воскресенье: **Закрито**

## Адрес

---



Harbour Towne Marina, 850 NE 3rd St,  
STE 213, Dania, FL 33004