

CATTITUDES — BROWARD



Builder: BROWARD

Year Built: 1984

Model: Motor Yacht

Price: PRICE ON APPLICATION

Location: United States

LOA: 78' 0" (23.77m)

Beam: 19' 4" (5.89m)

Cruise Speed: 12 Kts. (14 MPH)

Max Speed: 16 Kts. (18 MPH)

Our experienced yacht broker, Andrey Shestakov, will help you choose and buy a yacht that best suits your needs **Cattitudes — BROWARD** from our catalogue. Presently, at Shestakov Yacht Sales Inc., we have a wide variety of yachts available on our sale's list. We also work in close contact with all the big yacht manufacturers from all over the world.

If you would like to buy a yacht **Cattitudes — BROWARD** or would like help answering any questions concerning purchasing, selling or chartering a yacht, please call **+1(954)274-4435**

TABLE OF CONTENTS

TABLE OF CONTENTS	2
SPECIFICATIONS	3
Overview	3
Basic Information	3
Dimensions	3
Speed, Capacities and Weight	3
Accommodations	3
Hull and Deck Information	4
Engine Information	4
DETAILED INFORMATION	5
Layout	5
Navigation Equipment	5
Deck & Other Features	5
Covers	6
Electronics	6
Inside Equipment	6
Electrical Equipment	6
Outside Equipment/ Extras	6
Disclaimer	6
Exclusions	7
Disclaimer	7
PHOTOS	8
CONTACTS	11
Contact details	11
Telephones	11
Office hours	11
Address	11

SPECIFICATIONS

Overview

A lot of boat for little money "Cattitudes" is an opportunity for somebody with a decorator's eye. Very serviceable and usable (as the current owner's lived aboard until very recently) but a re-fit and decorating would not be wasted.

Basic Information

Category: Motor Yacht

Model Year: 1987

Year Built: 1984

Country: United States

Dimensions

LOA: 78' 0" (23.77m)

Beam: 19' 4" (5.89m)

Clearance: 23' 0" (7.01m)

MFG Length: 78' 9" (24.00m)

Speed, Capacities and Weight

Cruise Speed: 12 Kts. (14 MPH)

Max Speed: 16 Kts. (18 MPH)

Water Capacity: 1000 Gallons

Holding Tank: 150 Gallons

Fuel Capacity: 4500 Gallons

Accommodations

Total Cabins: 3

Total Berths: 5

Total Heads: 3

Hull and Deck Information

Hull Material: Aluminum

Engine Information

Engines: 2

Manufacturer: Detroit Diesel

Model: 12V71N

Engine Type: Inboard

Fuel Type: Diesel

DETAILED INFORMATION

Layout

Entry to the main salon from the aft deck that overlooks the factory cockpit as well as doors from the deck port and starboard. There is also direct access from the deck on starboard between the main salon and pilothouse. Nearly full beam main salon with TV center forward also incorporates the enclosed aft deck. Next forward is the raised pilothouse. Galley further forward with dinette and “country kitchen” feel. Furthest forward from the galley is access to the crew’s quarters and engine room. Crews quarters has a “V” berth forward, head and shower, and a captain’s quarters/workshop just forward of the walk-in, air-conditioned engine room.

Stairway from the main salon leads to the guest and master staterooms. Almost full beam master has a private head with a jacuzzi tub and full-size shower. Flybridge access is from a pilothouse stairway on port.

Navigation Equipment

Navigation electronics are mostly functional and the vessel can be run as is for years but they are not state of the art. Equipment list includes:

Raymarine E120 Chart Plotter

Naiad Stabilizers

Furuno Radar

Raymarine TriData Depth, Speed and Trip Log

Robertson Autopilot

Eartec Full Duplex Wireless Communication System

Engine Synchronizer

Danforth Constellation Compasses

Deck & Other Features

Skipper Hydraulic Bow Thruster

KVH Tracvision Satellite TV

Ideal electric windlass and tender davit. Each with new, wired, remote controls.

Panish Throttle and Shift Controls

Aluminum Painted Decks

Fuel Polishing System

Watermaker With New Membranes

Both AC chillers and 4 air handlers new within the last 24 months.

Extensive Collection of Spare Parts

Tender Also Available Separately

Covers

Bimini Top

Electronics

Navigation center Radar Compass CD player Autopilot Log-speedometer TV set GPS Repeater(s) Depthsounder VHF Radio Computer Plotter

Inside Equipment

Bow thruster Dishwasher Air conditioning Electric bilge pump Hot water Electric head Battery charger Heating Air compressor Fresh water maker Refrigerator Deep freezer Washing machine Manual bilge pump Oven Marine head Microwave oven

Electrical Equipment

Shore power inlet - 2 X 100 Amp Connections Available Generator - 2 Kilo Pack 32KW

Outside Equipment/ Extras

Swimming ladder Davits Electric windlass

Disclaimer

The Company offers the details of this vessel in good faith but cannot guarantee or warrant the accuracy of this information nor warrant the condition of the vessel. A buyer should instruct his agents, or his surveyors, to investigate such details as the buyer desires validated. This vessel is

offered subject to prior sale, price change, or withdrawal without notice.

Exclusions

Owner's personal belongings.

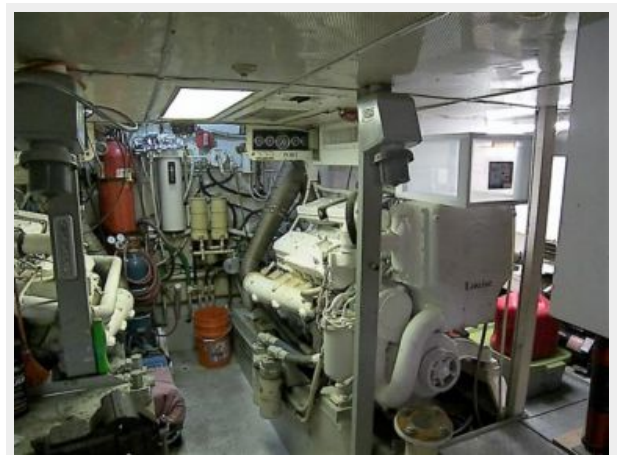
Disclaimer

The Company offers the details of this vessel or yacht in good faith but cannot guarantee or warrant the accuracy of this information nor warrant the condition of the vessel. A buyer should instruct his representatives, agents, or his surveyors, to investigate such details as the buyer desires validated. This vessel or yacht is offered subject to prior sale, price change, or withdrawal without notice.

PHOTOS







CONTACTS

Andrey Shestakov, leading yacht broker of the sales department of Shestakov Yacht Sales Inc. Shestakov Yacht Sales Inc., the official representative of the Miami/Fort Lauderdale FL headquarters.

Contact details

Email: andrey@shestakovyachtsales.com

Web: shestakovyachtsales.com/en/

Telephones

USA: +1(954)274-4435

Office hours

Monday – Saturday: **9:00 - 21:00** EDT

Sunday: **closed**

Address



Harbour Towne Marina, 850 NE 3rd St,
STE 213, Dania, FL 33004