

SKUA 2



Year Built: 1982

Model: Pilothouse Cutter

Price: PRICE ON APPLICATION

LOA: 43' (13.11mm)

Beam: 12.3

Min Draft: 2' 1" (0.63mm)

Max Draft: 7' 6" (2.27mm)

Cruise Speed: 6 Knots Kts. (7 MPH)

Max Speed: 8 Knots Kts. (9 MPH)

Our experienced yacht broker, Andrey Shestakov, will help you choose and buy a yacht that best suits your needs **SKUA 2** — n/a from our catalogue. Presently, at Shestakov Yacht Sales Inc., we have a wide variety of yachts available on our sale's list. We also work in close contact with all the big yacht manufacturers from all over the world.

If you would like to buy a yacht **SKUA 2** — n/a or would like help answering any questions concerning purchasing, selling or chartering a yacht, please call **+1(954)274-4435**

TABLE OF CONTENTS

TABLE OF CONTENTS	2
SPECIFICATIONS	3
Overview	3
Basic Information	3
Dimensions	3
Speed, Capacities and Weight	4
Accommodations	4
Hull and Deck Information	4
PHOTOS	5
CONTACTS	9
Contact details	9
Telephones	9
Office hours	9
Address	9

SPECIFICATIONS

Overview

This Skimmer 38 was extended to 43 ft by its previous owner, who added a swimming platform. It was built to sail around the world and endure the roughest seas. The heavy duty Barbarossa winches bear testimony to the high standards the boat was built to. The hydraulic-controlled raising keel (60 cm minimum draft) needs maintenance. **Sail:** main sail (average condition), furling Genoa (new 2015, UK Sails, mounted on FURLEX), symmetrical spinnaker (average condition), No 3 Jib (average condition), storm sail (average condition).

Electronics: Garmin GPS, Furono Radar, iCom VHF, AIS, Codan HF Radio Transciever, Depth Finder, TMQ AP4 Autopilot, electronic anode controller, all in working order.

Electrics: 4 x Deep Cycle 100 Ah ACDelco Voyager Marine Batteries (new in 2016), TRACE battery charge load controller / inverter , Red Arc INGRAM Charge Equalizer, 4 x 75 Watt Solar panels, engine fitted with 2 x alternators (150A and 300A), 12V, 24 V and 220 V circuits.

Others: Zinc Savor II (30 A galvanic isolator), bow thruster, 2 x Air Conditioning units (220V and 24V), 2 x 20 kg anchors (Danforth and plough) and 1 x 10 kg anchor (Danforth).

Accommodation: V-cabin double berth, two single berths aft port-side, dining table in main saloon converts into double berth; heads, galley, main saloon and pilot house.

Basic Information

Category: Pilothouse Cutter

Sub Category: Cruising Sailboat

Model Year: 1982

Year Built: 1982

Refit Type: Hull extension

Dimensions

LOA: 43' (13.11mm)

Beam: 12.3

Min Draft: 2' 1" (0.63mm)

Max Draft: 7' 6" (2.27mm)

Speed, Capacities and Weight

Cruise Speed: 6 Knots Kts. (7 MPH)

Max Speed: 8 Knots Kts. (9 MPH)

Water Capacity: 200 Gallons

Fuel Capacity: 150 Gal Gallons

Fuel Consumption: 4 Gal Gallons

Accommodations

Total Cabins: 2

Total Berths: 6

Sleeps: 6

Total Heads: 1

Hull and Deck Information

Hull Material: Aluminum

Deck Material: Teak over Aluminum

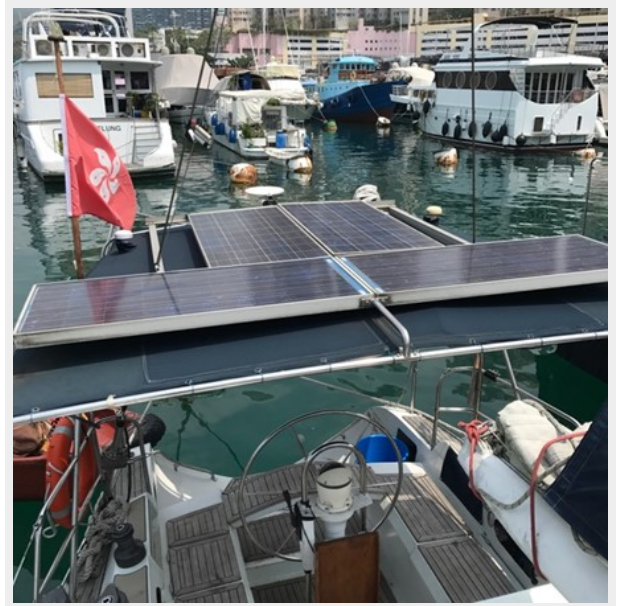
Hull Color: White

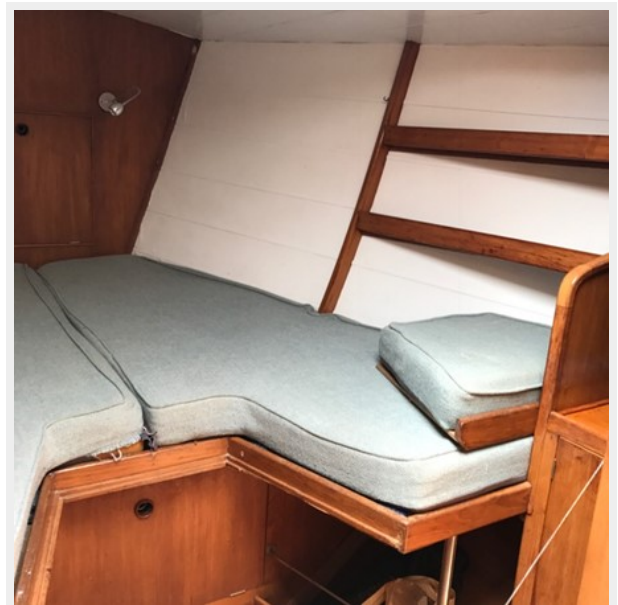
Hull Designer: Dick Zaal

Exterior Designer: Dick Zaal

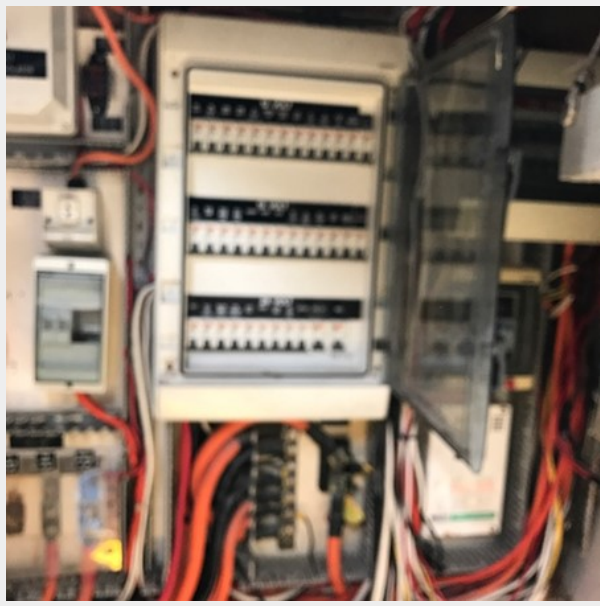
Interior Designer: Dick Zaal

PHOTOS









CONTACTS

Andrey Shestakov, leading yacht broker of the sales department of Shestakov Yacht Sales Inc. Shestakov Yacht Sales Inc., the official representative of the Miami/Fort Lauderdale FL headquarters.

Contact details

Email: **andrey@shestakovyachtsales.com**

Web: shestakovyachtsales.com/en/

Telephones

USA: +1(954)274-4435

Office hours

Monday – Saturday: **9:00 - 21:00** EDT

Sunday: **closed**

Address



Harbour Towne Marina, 850 NE 3rd St,
STE 213, Dania, FL 33004