

RIPOSO — SHANNON



Судостроитель: SHANNON

Год постройки: 1996

Модель: Крейсерская яхта

Цена: **ЦЕНА ЯХТЫ ПО ЗАПРОСУ**

Местонахождение: United States

Длина общая: 43' 0" (13.11m)

Ширина: 13' 3" (4.04m)

Мин. осадка: 4' 9" (1.45m)

Макс. осадка: 8' 7" (2.62m)

Крейс. скорость: 8 Kts. (9 MPH)

Макс. скорость: 9 Kts. (10 MPH)

Купить **Riposo — SHANNON** а также выбрать подходящую вам яхту из нашего **каталога яхт** вам поможет опытный яхтенный брокер Андрей Шестаков. На сегодняшний день компания **Shestakov Yacht Sales Inc.** имеет большое количество яхт в **собственном списке продаж**, а также тесно сотрудничает со всеми крупными яхтенными **производителями** по всему миру.

Для того чтобы купить яхту **Riposo — SHANNON** а также проконсультироваться по любому вопросу связанному с покупкой, продажей, чартером яхт позвоните по телефону **+7(918)465-66-44**.

ОГЛАВЛЕНИЕ

ОГЛАВЛЕНИЕ	2
ХАРАКТЕРИСТИКИ	3
Обзор	3
Основная информация	3
Размеры	4
Скорость, вместимость и масса	4
Размещение	4
Корпус и палуба	4
ПОДРОБНОЕ ОПИСАНИЕ	5
Accommodations	5
Mechanical and Electrical	5
Navigation Equipment and Electronics	6
Deck, Sails and Rigging	7
Cockpit	8
Safety Gear	9
Hull	9
Dinghy and Outboard	9
Manufacturer Provided Description	9
Исключения	10
Отказ от ответственности	10
ФОТОГРАФИИ	11
КОНТАКТЫ	15
Контактная информация	15
Телефоны	15
Время работы	15
Адрес	15

ХАРАКТЕРИСТИКИ

Обзор

Riposo is a beautiful, well maintained example of the classic Shannon 43 cutter. She has just returned from a four year East Coast and Caribbean cruise and is ready to go again. She is absolutely turn key!

Shannon has long been known for perfecting the keel/centerboard design found on **Riposo**. She goes from 4'9" to 8'9" using a hand winch in the cockpit.

I have a four page list of upgrades, complete maintenance logs and detailed owner's manuals of everything on the boat, complete with photos and instructions that have been compiled by the present owners.

Upgrades include:

All new rigging and chainplates

Stainless steel dinghy davits

Solar and wind generators to charge the 12v batteries that run the refrigeration and other 12v electrical applications

New windlass

New deck gelcoat

New upholstery

New electric heads and sanitation system

Bead blasted and Interprotected

New thru hulls

To schedule an appointment to view this impeccable cruiser please call or email me. You won't be disappointed.

Основная информация

Тип судна: Крейсерская яхта

Модельный год: 1996

Год постройки: 1996

Страна: United States

Размеры

Длина общая: 43' 0" (13.11m)

Длина по ватерлинии: 36' 7" (11.15m)

Длина палубы: 43' 0" (13.11m)

Ширина: 13' 3" (4.04m)

Мин. осадка: 4' 9" (1.45m)

Макс. осадка: 8' 7" (2.62m)

Трапы: 63' 0" (19.20m)

Скорость, вместимость и масса

Крейс. скорость: 8 Kts. (9 MPH)

Макс. скорость: 9 Kts. (10 MPH)

Дальность на макс. скорости: 600 Kts.

Водоизмещение: 27500 Pounds

Вместимость воды: 200 Gallons

Вместимость сточного бака: 35 Gallons

Объем топливного бака: 100 Gallons

Размещение

Всего кают: 2

Всего коек: 4

Всего ком. состава: 2

Корпус и палуба

Материал корпуса: Fiberglass

Комплектация корпуса: Monohull

ПОДРОБНОЕ ОПИСАНИЕ

Accommodations

Riposo features a two stateroom, 2 head interior with cherry joinery and a teak and holly sole.

The forward cabin is separated from the main salon by a privacy door that leads to a comfortable "V" berth. There are two large drawers under the berth plus two hanging lockers. More storage can be found in a three drawer bureau as well as shelving above.

The head en suite and has a marine toilet with holding tank, sink, vanity, cabinet, lockers, telephone shower and teak shower grate.

The salon is a midships and features a "L" shaped settee to starboard with a teak dining table and a long settee to port. Both pull out to make single berths. Above are book shelves on each side and louvered cabinets for storage. With the cherry wood bulkheads, teak and holly sole plus high gloss headliner, a wonderful ambiance is created. There are opening ports for ventilation and four chrome reading lights.

The navigation station is to starboard and features an opening chart table, electrical panels and comfortable chair.

Across to port is the aft head with a private access door from the aft cabin. There is an electric toilet, vanity, telephone shower, mirror and sink. There is plenty of storage in numerous lockers.

The aft cabin has a double berth with drawers underneath, a bureau with four drawers, a hanging locker and shelves to port.

Mechanical and Electrical

75 hp Yanmar turbo diesel engine (5200hrs)

Racor 500FG fuel filter

3 aluminum fuel tanks, 100 gals total

Balmar 150 amp alternator with regulator

Max prop 3 blade propeller

Lofrans 12v windlass

Grunert 12v refrigeration and freezer combined with Frigoboat 12v system

12v and 110v electrical panel

2 zone air conditioning

Hot water heater

2 electric heads, owner's cabin is fresh water flush

Sanitation system totally replaced

Spectra 10 gal/p/h 12v fresh water maker

Honda 2000 generator

2500VA 240 to 110v transformer

All lighting is LED

3 X Kyocera solar panels

DL 440 wind generator

All thru hulls were replaced in 2016

4 large 12v batteries plus new engine start battery

Navigation Equipment and Electronics

Nav Station

SEA 222 SSB

Furuno GPS

Raymarine multi display

Tri Star monitor for Kyocera solar panels

CDM Systems BT2000 battery monitor

Garmin GHS wireless remote VHF

Garmin HD radar

Iridium to Go satellite phone

Navigation lap top computer

Clock and barometer

Helm

Edson pedestal with Ritchie compass

Raymarine ST 60 wind and boat speed

Datamarine depth sounder

Garmin chartplotter with transmit and receive AIS

Garmin wireless remote VHF

Icom VHF

Simrad D28 auto pilot

Deck, Sails and Rigging

Lofrans Tigre 1500w windlass (2016)

65 lbs Mantus anchor with chain and rode

44lbs spare anchor

Double lifelines

4 opening hatches with screens and covers

4 polished chrome dorades with SS guards

SS handrails

Jack lines

Salt water washdown pump

Shannon diamond patterned non skid

Dodger and Bimini with enclosure screens (2016)

SS dinghy davits with solar panel

Rub rail

SS swimming ladder

SS ceramic BBQ

SAILS

Profurl main boom reefing system that leads to a Harken ST 48 electric winch in cockpit

Furling staysail

Furling 140% genoa

Storm jib

Rigging

All standing rigging was replaced in 2014

All the chainplates were replaced in 2014

Running rigging upgraded when needed

Spinnaker pole attached to mast fitting

Boom brake

Cockpit

Bimini and dodger (2016)

Cockpit cushions

New leather on the wheel

Teak cockpit table and drink holder

Binoculars holder

Cockpit shower

Harken ST 48 electric winch

2 X ST 64 Harken sheet winches

Rope clutches 3 port and 3 starboard

Manual bilge pump

Large sail lockers, port and starboard

Propane locker under helm seat

Liferaft compartment under cockpit sole

Keel/centerboard winch

Four cubby holes for storage (winch handles,sunscreen etc)

Safety Gear

Winslow 6 person Offshore liferaft

GPS EPRIB 406

LED running and anchoring lights

Flares and flare gun

Life jackets and safety harnesses

Storm sea anchor

Ditch bag

Lifesling

Jack lines

Hull

Shannon has long been known to build solid one piece hulls with no keelbolts. They have been using the best technology of the day to create a very strong and handsome classic yacht.

Over the years they have perfected the keel/centerboard design which allows for the ability to explore and anchor in shallower waters plus have a deep draft for offshore or windward work.

Dinghy and Outboard

10' Avon RIB

9.8 Tohatsu 4 stroke outboard motor

Manufacturer Provided Description

Exceptional sailing performance and a customized interior make the Shannon 43 the foremost yacht for coastal cruising or long distance passage-making. While offering a traditional look above the waterline, the Shannon 43 exemplifies state-of-the-art design and construction techniques. She is fast on all points of sail, seaworthy, and comfortable. A boat for two-person sailing and liveaboard, with two private staterooms and dual head arrangements, she provides accommodations for owners and guests. The underwater hull design is available in either a keel centerboard or fixed draft version and the choice of rig is an easily-handled double headsail cutter or double headsail ketch. Every Shannon is delivered fully commissioned with an

extensive list of standard equipment ready for an extended voyage.

Исключения

При продаже яхты исключаются личные вещи владельца.

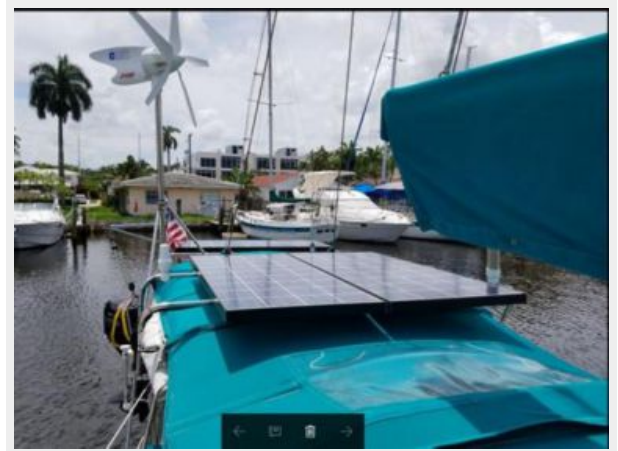
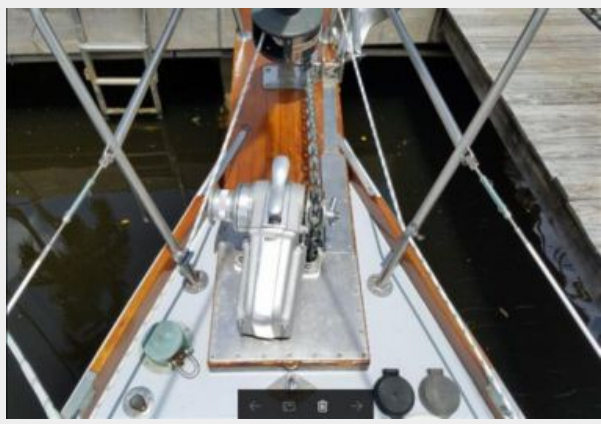
Отказ от ответственности

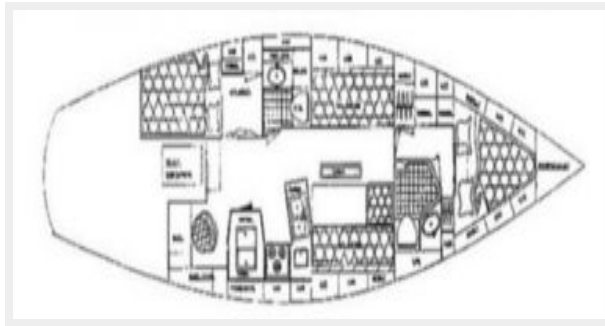
Компания предоставляет описание судна или яхты добросовестно, но не может гарантировать точность этой информации, а также не ручается за техническое состояние. Покупатель должен проинструктировать своих агентов или оценщиков исследовать представленную информацию более подробно, по собственному желанию. Продажа судна или яхты, изменение цены или снятие с продажи будет происходить без предварительного уведомления.

ФОТОГРАФИИ









КОНТАКТЫ

Андрей Шестаков (Andrey Shestakov) – ведущий яхтенный брокер отдела продаж яхт и судов компании Shestakov Yacht Sales Inc. Официальный представитель Shestakov Yacht Sales Inc. для русскоговорящих клиентов в центральном офисе компании в Майами/Форт Лодердейл/Флорида/США.

Контактная информация

Email: **andrey@shestakovyachtsales.com**

Web: shestakovyachtsales.com

Телефоны

Краснодарский край: **+7(918)465-66-44**

США, Майами, Флорида: **+1(954)274-4435**

Время работы

Понедельник – Суббота: **9:00 - 21:00**
EDT

Воскресенье: **Закрито**

Адрес



Harbour Towne Marina, 850 NE 3rd St,
STE 213, Dania, FL 33004