

## CASA MIA — MARINER MARINE



**Builder:** MARINER MARINE

**Year Built:** 1980

**Model:** Pilothouse Cutter

**Price:** PRICE ON APPLICATION

**Location:** United States

**LOA:** 38' 0" (11.58m)

**Beam:** 11' 7" (3.53m)

**Min Draft:** 5' 0" (1.52m)

Our experienced yacht broker, Andrey Shestakov, will help you choose and buy a yacht that best suits your needs Casa Mia — MARINER MARINE from our catalogue. Presently, at Shestakov Yacht Sales Inc., we have a wide variety of yachts available on our sale's list. We also work in close contact with all the big yacht manufacturers from all over the world.

If you would like to buy a yacht Casa Mia — MARINER MARINE or would like help answering any questions concerning purchasing, selling or chartering a yacht, please call +1(954)274-4435

---

# TABLE OF CONTENTS

---

TABLE OF CONTENTS	2
SPECIFICATIONS	3
Overview	3
Basic Information	3
Dimensions	3
Speed, Capacities and Weight	3
Accommodations	3
Hull and Deck Information	4
Engine Information	4
DETAILED INFORMATION	5
Accommodations & Layout	5
Galley	5
Sails & Rigging	5
Electronics/Navigation Equipment	6
Deck & Hull	6
Electrical & Mechanical	7
Exclusions	7
Disclaimer	7
PHOTOS	8
CONTACTS	15
Contact details	15
Telephones	15
Office hours	15
Address	15

---

# SPECIFICATIONS

---

## Overview

---

- Price reduced by \$10K for immediate sale. As-Is. Needs new standing rigging and a new prop. Has fresh bottom paint and is currently out of the water.
- See additional information below for more details about upgrades.
- Rugged Cutter rigged Pilothouse! Dual helm with cockpit and pilothouse steering. Great visibility with comfortable accommodations and layout. One of only six New Hampshire built 38 Mariners built.

## Basic Information

---

**Category:** Pilothouse Cutter

**Sub Category:** Cruising Sailboat

**Model Year:** 1980

**Year Built:** 1980

**Country:** United States

## Dimensions

---

**LOA:** 38' 0" (11.58m)

**LWL:** 30' 2" (9.19m)

**Beam:** 11' 7" (3.53m)

**Min Draft:** 5' 0" (1.52m)

**MFG Length:** 37' 8" (11.48m)

## Speed, Capacities and Weight

---

**Displacement:** 18000 Pounds

**Water Capacity:** 110 Gallons

**Fuel Capacity:** 88 Gallons

## Accommodations

---

**Total Cabins:** 1

## Hull and Deck Information

---

**Hull Material:** Fiberglass

## Engine Information

---

**Manufacturer:** Perkins

---

# DETAILED INFORMATION

---

---

## Accommodations & Layout

---

- Enter the pilothouse from the teak center opening double doors. Excellent visibility from pilothouse windows. Center opening windshield offers great ventilation. Stand up nav station is to port followed by raised helm seat and instrumentation. Galley is to starboard. Engine access is beneath pilothouse level cabin sole. Step down 3 steps to the central salon. Pilot berth/upholstered bench settee is to starboard with an L shaped settee that can convert to a double is to port. Large Teak table folds up and stows against the bulkhead. Forward is the awartships head with Crittenden head and shower to port and SS sink and vanity to starboard. The large V-berth has a inner spring mattress and the stateroom also has 2 cedar hanging lockers, 3 drawers and shelved cabinet for excellent storage.
- New Upholstery (2015)
- Force 10 Propane heater
- Bomar hatches (new gaskets, glass and screens (2016)
- Opening Windshield and wipers
- Teak and Holly Sole
- Oiled teak interior

---

## Galley

---

- Force 10 Propane stove and oven
- Solinoid valve and shutoff switch
- 12V Refrigeration
- SS sink
- Teak wall mounted plate racks

---

## Sails & Rigging

---

- Aluminum spars with SS standing rigging - needs new standing rigging
- New halyards (2016)
- Yankee cut Jib
- Headsail
- Roller Furling (serviced 2016)
- Club footed self tending staysail
- Main Sail
- New green mainsail cover
- Sails in fair condition
- (2) 48# Lewmar Primary winches

- (2) 10# Lewmar winches
- 16# Harken ST winch
- SS Hard boom Vang
- Snatch Blocks
- Harken traveller on cabin top
- Running backs

---

## Electronics/Navigation Equipment

---

- Garmin GPS map 440
- Raytheon 16 mile Radar (1996)
- Autohelm 6000 Autopilot (works sometimes)
- Handheld Garmin GPS 76
- Positrol Panish 2 lever controls
- Anchor windlass controls
- Handheld VHF
- Jensen CD player/radio
- Danforth compass

---

## Deck & Hull

---

- Electric Windlass
- CQR #45 Anchor (new 2016)
- 200' 5/8 Chain
- 40# Danforth Anchor w/ new anchor rode
- Stern Arch for solar panel
- Dingy Davits
- Magma BBQ
- Swim Step
- Sunbrella cockpit cushions
- Lazerette storage
- Ring buoy
- Boat hook
- Cockpit scupper drains
- Teak slats in cockpit sole
- Bifold companionway door with sliding top
- Rubrail
- Sparkman and Stephens type design
- New Hampshire built
- FRP solid fiberglass hull
- deck FRP w/ 3/4" balsa corefin keel
- skeg hung rudder

- bronze seacocks
- freshly varnished exterior teak

---

## Electrical & Mechanical

---

- Solar Panel w/controller
- 6 amp battery charger
- (4) 6V batteries and cables (2016)
- Cen-tec 1200 watt power inverter (2016) in box to install
- Shore power cord
- Engine access under pilothouse floor with cockpit hatch access
- Perkins 4108 engine with 20 hours since rebuild
- new SS shaft, cutlass bearing & stuffing box seals
- 3000 original hours
- Hurth transmission 2.8 - 1
- Alternator
- Racor filter
- 3 blade 16" Maxi-prop w/ reversable pitch - reconditioned
- Hydraulic steering (pump re-built 2016)
- Hot water heater (needs replacement)
- sump pump in shower
- sump pump in galley
- whale gusher type pump in cockpit
- Wilcox Crittendon head w/ Y valve and holding tank(2015)
- new plumbing hoses, new deck pumpout, new macerator and thru hull(2015)
- new freshwater plumbing in bath and shower
- Fire extinguishers
- SS fuel tank
- Aluminum water tank
- lots of spares/tools

---

## Exclusions

---

Owner's personal belongings.

---

## Disclaimer

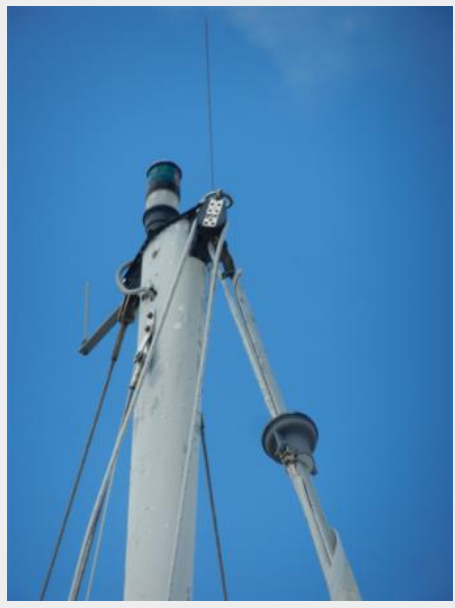
---

The Company offers the details of this vessel or yacht in good faith but cannot guarantee or warrant the accuracy of this information nor warrant the condition of the vessel. A buyer should instruct his representatives, agents, or his surveyors, to investigate such details as the buyer desires validated. This vessel or yacht is offered subject to prior sale, price change, or withdrawal without notice.

# PHOTOS





















# CONTACTS

---

Andrey Shestakov, leading yacht broker of the sales department of Shestakov Yacht Sales Inc. Shestakov Yacht Sales Inc., the official representative of the Miami/Fort Lauderdale FL headquarters.

## Contact details

---

Email: [andrey@shestakovyachtsales.com](mailto:andrey@shestakovyachtsales.com)

Web: [shestakovyachtsales.com/en/](http://shestakovyachtsales.com/en/)

## Telephones

---

USA: +1(954)274-4435

## Office hours

---

Monday – Saturday: **9:00 - 21:00** EDT

Sunday: **closed**

## Address

---



Harbour Towne Marina, 850 NE 3rd St,  
STE 213, Dania, FL 33004