

MONEY SHOT — LUHRS



Builder: [LUHRS](#)

Year Built: 2006

Model: Walkaround

Price: PRICE ON APPLICATION

Location: United States

LOA: 41' 0" (12.50m)

Beam: 15' 9" (4.80m)

Max Draft: 3' 8" (1.12m)

Cruise Speed: 24 Kts. (28 MPH)

Max Speed: 30 Kts. (35 MPH)

Our experienced yacht broker, Andrey Shestakov, will help you choose and buy a yacht that best suits your needs **Money Shot — LUHRS** from our catalogue. Presently, at Shestakov Yacht Sales Inc., we have a wide variety of yachts available on our sale's list. We also work in close contact with all the big yacht manufacturers from all over the world.

If you would like to buy a yacht **Money Shot — LUHRS** or would like help answering any questions concerning purchasing, selling or chartering a yacht, please call **+1(954)274-4435**

TABLE OF CONTENTS

| | |
|-----------------------------------|----|
| TABLE OF CONTENTS | 2 |
| SPECIFICATIONS | 3 |
| Overview | 3 |
| Basic Information | 3 |
| Dimensions | 4 |
| Speed, Capacities and Weight | 4 |
| Accommodations | 4 |
| Hull and Deck Information | 4 |
| Engine Information | 4 |
| DETAILED INFORMATION | 5 |
| Manufacturer Provided Description | 5 |
| Additional Description | 5 |
| Engine Notes | 5 |
| Disclaimer | 5 |
| Exclusions | 5 |
| Disclaimer | 5 |
| PHOTOS | 6 |
| CONTACTS | 10 |
| Contact details | 10 |
| Telephones | 10 |
| Office hours | 10 |
| Address | 10 |

SPECIFICATIONS

Overview

This nicely equipped 41' Luhrs is powered by Cummins 645 Hp.HO Diesels. The Luhrs Marine Group's goals for its 41 Convertible were simple: The boat had to be built to accommodate the offshore angler, but she also needed enough creature comforts so that a fisherman could enjoy a weeklong cruise with his family. Everwear is also used in the U-shape galley, which is up and just forward of the lounge. It's equipped with a three-burner cooktop, stainless steel convection/microwave oven, and coffee maker, but the neatest feature is the raised wooden handholds that envelop the standard Corian countertops. Luhrs borrowed this idea from the parent company's line of Hunter sailboats. It prevents the need to put screws into the saloon overhead for handholds and keeps dishes from sliding around on the countertops. Not only does it look good, but it's sturdy. With plenty of storage those longer trips will accommodate all your belongings. Ultraleather L-shape lounge in the saloon, just to starboard upon entering from the cockpit. The lounge stretches outboard under the side decks and, with the touch of a button, slides out into a berth for two. Rounding out the saloon, Luhrs opted for Everwear for the saloon sole. It's a faux teak-and-holly laminate that seems durable, and whether you're cruising with the kids or taking a bunch of guys out for a few days offshore, you'll appreciate that.

Recent upgrades

Garmin 7212 (2015)

Garmin radar 18" raydome (2015)

Autopilot (2016)

New a/c unit (1)

New turbo, Bose surround sound, LED lights, Aftercoolers cleaned and resealed, Recent engine services.

Basic Information

Category: Walkaround

Model Year: 2006

Year Built: 2006

Country: United States

Dimensions

LOA: 41' 0" (12.50m)

Beam: 15' 9" (4.80m)

Max Draft: 3' 8" (1.12m)

Clearance: 18' 2" (5.54m)

MFG Length: 44' 6" (13.56m)

Speed, Capacities and Weight

Cruise Speed: 24 Kts. (28 MPH)

Max Speed: 30 Kts. (35 MPH)

Displacement: 32000 Pounds

Water Capacity: 130 Gallons

Fuel Capacity: 600 Gallons

Accommodations

Total Cabins: 3

Total Berths: 6

Total Heads: 1

Hull and Deck Information

Hull Material: Fiberglass

Engine Information

Engines: 2

Manufacturer: Cummins

Model: QSM11

Fuel Type: Diesel

DETAILED INFORMATION

Manufacturer Provided Description

The 41 Convertible is no lightweight; she is built to fish offshore. A gentle rise to the sheer, an aggressive bow flare and a rounded tumblehome are all marks of a custom boat, and the 41 carries them well. Luhrs designers and engineers achieved their mandate to produce a great running offshore boat and combine it with the latest in comfort and amenities.

Additional Description

Accommodations are sumptuous with a spacious salon, complete with the latest in entertainment equipment, the galley is complete, right down to the coffee maker and the staterooms are fitted with first-class appointments including inner spring mattresses.

Engine Notes

Twin Cummins QSM11 645 Hp HO. Recent service after coolers cleaned and sealed.

Disclaimer

The Company offers the details of this vessel in good faith but cannot guarantee or warrant the accuracy of this information nor warrant the condition of the vessel. A buyer should instruct his agents, or his surveyors, to investigate such details as the buyer desires validated. This vessel is offered subject to prior sale, price change, or withdrawal without not

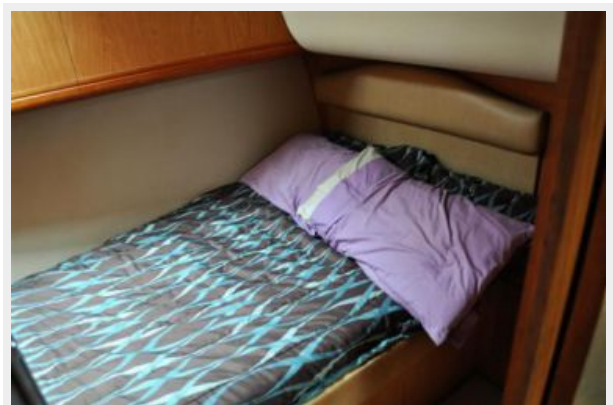
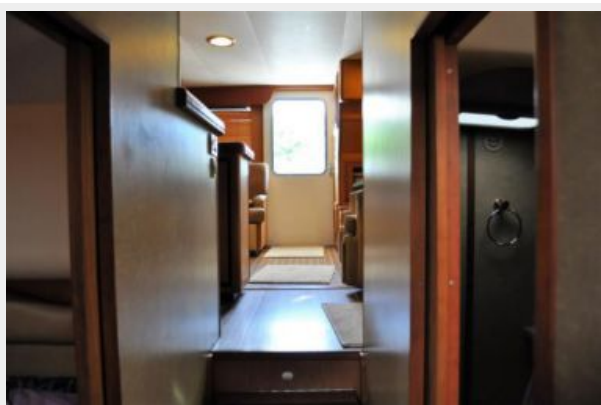
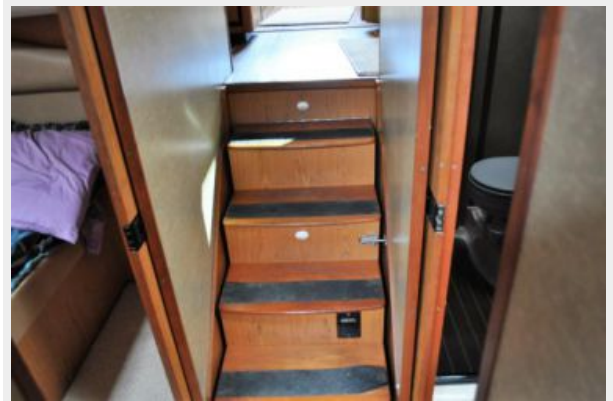
Exclusions

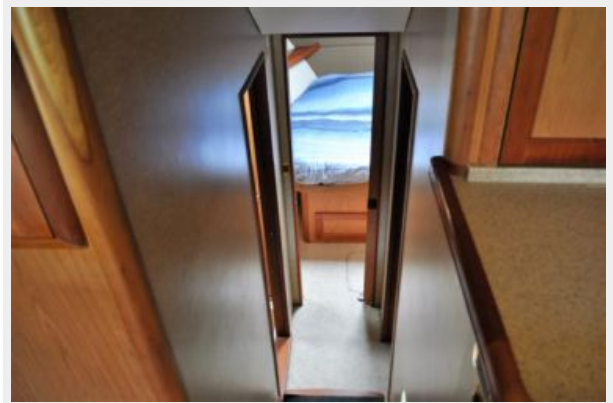
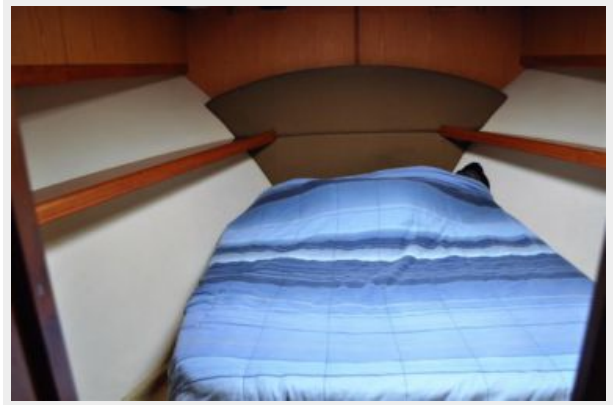
Owner's personal belongings.

Disclaimer

The Company offers the details of this vessel or yacht in good faith but cannot guarantee or warrant the accuracy of this information nor warrant the condition of the vessel. A buyer should instruct his representatives, agents, or his surveyors, to investigate such details as the buyer desires validated. This vessel or yacht is offered subject to prior sale, price change, or withdrawal without notice.

PHOTOS









CONTACTS

Andrey Shestakov, leading yacht broker of the sales department of Shestakov Yacht Sales Inc. Shestakov Yacht Sales Inc., the official representative of the Miami/Fort Lauderdale FL headquarters.

Contact details

Email: andrey@shestakovyachtsales.com

Web: shestakovyachtsales.com/en/

Telephones

USA: +1(954)274-4435

Office hours

Monday – Saturday: **9:00 - 21:00** EDT

Sunday: **closed**

Address



Harbour Towne Marina, 850 NE 3rd St,
STE 213, Dania, FL 33004