

## SHADOW — SUNSEEKER



**Builder:** SUNSEEKER

**Year Built:** 2005

**Model:** Motor Yacht

**Price:** PRICE ON APPLICATION

**Location:** Italy

**LOA:** 105' 0" (32.00m)

**Beam:** 20' 6" (6.25m)

**Max Draft:** 5' 0" (1.52m)

Our experienced yacht broker, Andrey Shestakov, will help you choose and buy a yacht that best suits your needs **Shadow — SUNSEEKER** from our catalogue. Presently, at Shestakov Yacht Sales Inc., we have a wide variety of yachts available on our sale's list. We also work in close contact with all the big yacht manufacturers from all over the world.

If you would like to buy a yacht **Shadow — SUNSEEKER** or would like help answering any questions concerning purchasing, selling or chartering a yacht, please call **+1(954)274-4435**

---

# TABLE OF CONTENTS

---

TABLE OF CONTENTS	2
SPECIFICATIONS	3
Overview	3
Basic Information	3
Dimensions	4
Speed, Capacities and Weight	4
Accommodations	4
Hull and Deck Information	4
Engine Information	4
DETAILED INFORMATION	5
Upgrades	5
Salon	5
Accommodations	5
Galley	6
Fly Bridge	7
Pilothouse	7
Deck Equipment	7
Mechanical	8
Electrical Equipment	8
Exclusions	9
Disclaimer	9
PHOTOS	10
CONTACTS	21
Contact details	21
Telephones	21
Office hours	21
Address	21

---

# SPECIFICATIONS

---

## Overview

---

OWNER LOOKING FOR OFFERS!

**Lowest price on the market by \$1,000,000. Would benefit from exterior paint in the next 12 months. Owner has purchased a larger vessel Hence such a great price.**

This classic 2005 Sunseeker Fly Bridge Yacht is one of the last of this model and a true head turner.

Built to US specification and powered with Twin MTU V16's @2000 hp each, the ride is thrilling. SHADOW can accommodate up to 8 guests plus crew. Her exquisite accommodations include an on deck master suite with a full beam VIP cabin and 2 twin cabins on the lower deck. The main deck salon is the perfect place for guest entertainment or just to enjoy some solitude. The spacious fly bridge provides maximum space and comfort for intimate gatherings as well as large parties.

### Fully Commercial Certified for Charter

SHADOW has been maintained with an open check book.....

### **Recent Improvements:**

- NEW Jet Ski Seadoo GTRX-2017
- NEW 16' Tender-2017
- NEW Bow Thruster-2017
- All NEW Anodes throughout and Antifouling - 2017
- Swim Platform painted - 2017
- Stern fully refiberglassed and repainted - 2016
- NEW A/C Chillers - 2016
- NEW Watermaker - 2016

---

## Basic Information

---

**Category:** Motor Yacht

**Sub Category:** Flybridge

**Model Year:** 2005

**Year Built:** 2005

**Country:** Italy

**Vessel Top:** Arch

---

## Dimensions

---

**LOA:** 105' 0" (32.00m)

**LWL:** 79' 10" (24.33m)

**Beam:** 20' 6" (6.25m)

**Max Draft:** 5' 0" (1.52m)

---

## Speed, Capacities and Weight

---

**Displacement:** 201300 Pounds

**Water Capacity:** 660 Gallons

**Fuel Capacity:** 3722 Gallons

---

## Accommodations

---

**Total Cabins:** 4

**Total Heads:** 5

---

## Hull and Deck Information

---

**Hull Material:** Fiberglass

**Hull Configuration:** Deep Vee

---

## Engine Information

---

**Engines:** 2

**Manufacturer:** MTU

**Model:** V16 2000 M91

**Engine Type:** Inboard

**Fuel Type:** Diesel

---

## DETAILED INFORMATION

---

### Upgrades

---

- Antifouling on bottom, 2017
- All New Anodes throughout, 2017
- Cruisair chilled water air conditioning upgraded throughout to handle dark hull color. Extra A/C chiller added to engine room, 2016
- NEW Watermaker, 2016
- NEW Bow Thruster, 2017
- Stainless steel caprails added throughout
- Contemporary style exterior cushions
- All soft goods replaced including new leather handrails inside
- Misting system added to flybridge
- Fresh water washdown system added to flybridge
- Swim platform painted, 2017
- Stern fully refiberglassed and painted, 2016
- NEW Jet Ski Seadoo GTRX, 2017
- NEW 16' Tender, 2017

### Salon

---

- Cherry interior
- Cream carpeting and cream settees
- Wet bar
- Hi/lo 50" TV w/Hi-fi surround sound, CD/DVD/radio
- Formal dining area forward w/seating for 8
- Day Head

### Accommodations

---

#### MASTER SUITE

- On Deck-forward-full beam
- King berth w/storage below
- Settee
- 42" Plasma TV
- Hi-fi surround sound system w/CD/DVD/radio
- Walk-in closet
- Safe
- Ample drawer storage and cabinets

- Lower level dressing room
- En suite head w/shower-lower level

## VIP STATEROOM

- Lower deck-amidship-full beam
- Centerline king berth w/storage below
- Settee
- 42" Plasma TV
- Hi-fi surround sound system w/CD/DVD/Radio
- Walk-in closet
- Ample drawer storage and cabinets
- En suite head w/shower

## GUEST STATEROOMS (P & S)

- Twin berths w/storage below
- Night stand between berths
- 15" LCD TV
- DVD/CD player
- Hanging locker
- En suite head w/shower
- Port cabin features additional pullman berth

## CREW QUARTERS-Aft

- Accommodations for up to 4 w/port & starboard twin berth cabins each w/head and shower
- Crew lounge area 15" LCD TV, CD & DVD

## Galley

---

- On deck galley
- Ice maker
- 2 x Refrigerators
- 3 x Freezers
- Gaggenau Microwave
- Gaggenau Electric cooktop and oven
- Exhaust fan
- Garbage disposal
- 2 x Miele dishwasher
- Miele washer & dryer
- Platinum table service for 12

---

## Fly Bridge

---

- Accessed via teak-laid stairway from aft deck
- Fly Bridge misting system in radar arch
- Large sunpad/lounge (P)
- C-settee w/table (S)
- Wet bar w/electric ceramic grill, refrigerator and ice maker
- Teak decking
- Fresh water deck wash outlet
- Helm station w/dual helm chairs (S) and bench seating (P)
- Radio/CD player with remote keypad at flybridge helm & 2 speakers in wheelhouse

---

## Pilothouse

---

- Furuno NavNet radar/chartplotter GPS with color displays
- Autopilot
- Dual station VHF
- Multiview speed & depth displays
- Electronic compass
- MTU blue line engine displays
- Rudder angle indicator
- Portable remote control for engines & thrusters
- Hydraulic power steering
- Emergency steering

---

## Deck Equipment

---

- 2 x Muir 4500 hydraulic anchor windlasses
- 2 x Stokes HHR 113 kg galvanized anchors w/85m & 95m chain
- Automatic anchor & chain salt water wash down
- 2 x Hawses w/roller, chain stoppers and devil's claw
- 2 x Muir hydraulic capstans (aft)
- Fore deck sun pad and seating
- Hydraulic passerelle
- Hydraulic swim platform-Major hydraulic overhaul, 2015
- Hot & cold hand held swim platform shower
- Swim ladder
- Stern garage w/power operated door for tender storage
- Stern dive locker with power operated door
  
- Stainless steel caprails added throughout
- Misting system on fly bridge

- Wash down system, fore, aft and fly bridge decks
- Third dome added for extra AV equipment including Playstation3/Wii games throughout
- Nautica International 16 Jet RIB-160 hp
- Seadoo GTRX jet ski
- Life rafts
- Teak cockpit, side decks, stairs, wheelhouse, fly bridge & swim platform

---

## Mechanical

---

- Twin MTU V16's @2000 hp each
- Triplex fuel filters to main engines
- Fuel filters to generators
- Manual fuel shut-off valves
- Engine stop warning
- Engine room sound insulation
- Fuel tank level indicator
- Hydraulic Trim Tabs
- Hydraulic power steering
- Emergency steering
- Wesmar hydraulic bow and stern thrusters @50 hp each
- Wesmar stabilizers
- Oil change system
- Fire alarm system
- FM200 & CO2 Fire extinguishing systems
- 14 x Hand held fire extinguishing-(up to date)
- Air Conditioning
- Automatic bilge pumps
- Smoke alarm system with central alarm and sensors through out the yacht
- Antifouling on bottom - regularly maintained
- All systems inspected and up to date

---

## Electrical Equipment

---

- US Spec electrical
- 2 x 40kW 60 hz Kohler gensets
- Atlas Shore Power conversion system
- 80 AMP battery charger
- 2 x 24V, 95 AMP battery chargers
- Emergency battery cross connection system
- 24V Start-up batteries
- Side deck lighting



---

## Exclusions

---

Owner's personal belongings.

---

## Disclaimer

---

The Company offers the details of this vessel or yacht in good faith but cannot guarantee or warrant the accuracy of this information nor warrant the condition of the vessel. A buyer should instruct his representatives, agents, or his surveyors, to investigate such details as the buyer desires validated. This vessel or yacht is offered subject to prior sale, price change, or withdrawal without notice.

# PHOTOS



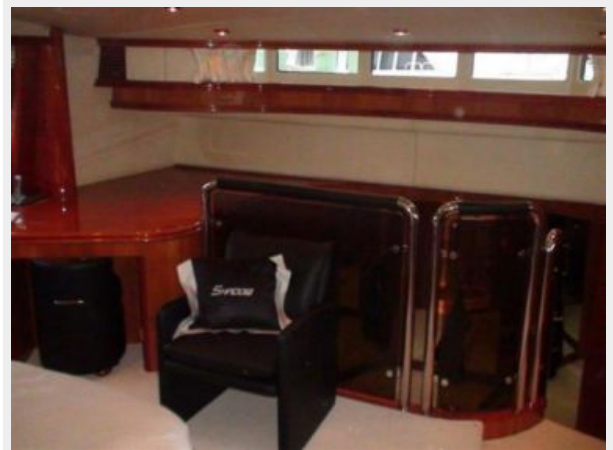


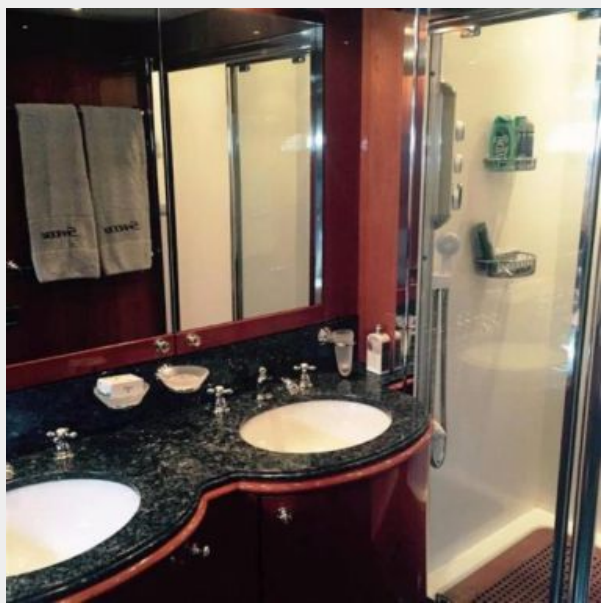
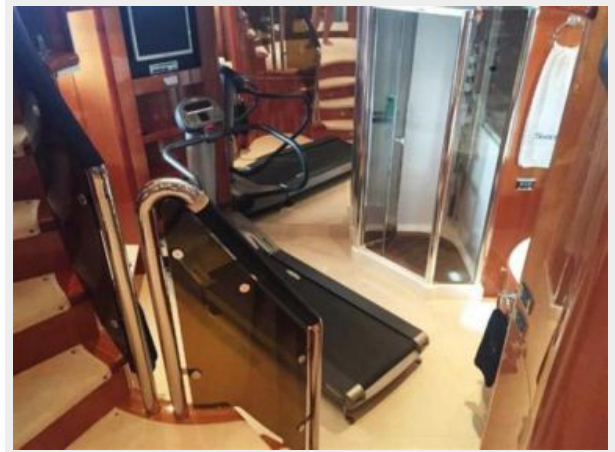
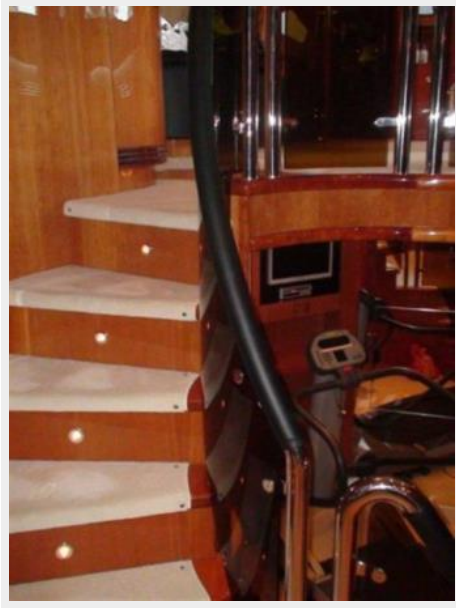


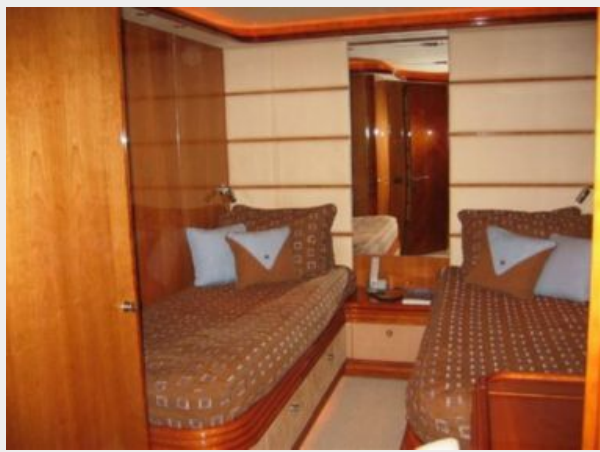








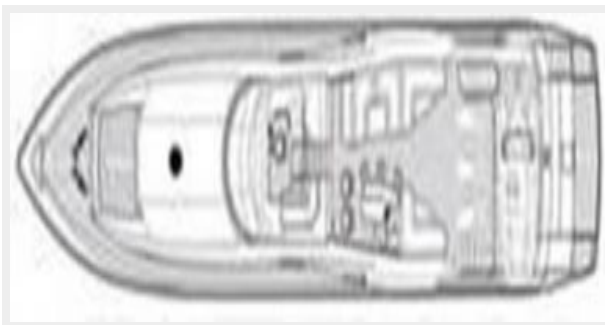


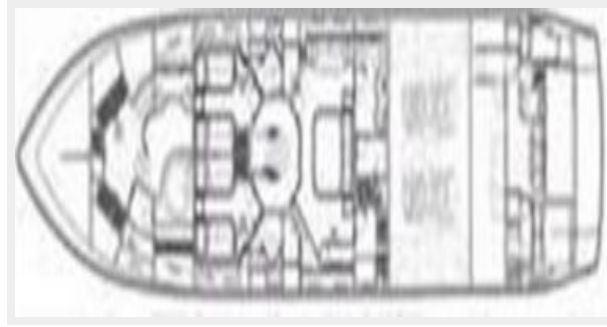














# CONTACTS

---

Andrey Shestakov, leading yacht broker of the sales department of Shestakov Yacht Sales Inc. Shestakov Yacht Sales Inc., the official representative of the Miami/Fort Lauderdale FL headquarters.

## Contact details

---

Email: [andrey@shestakovyachtsales.com](mailto:andrey@shestakovyachtsales.com)

Web: [shestakovyachtsales.com/en/](http://shestakovyachtsales.com/en/)

## Telephones

---

USA: +1(954)274-4435

## Office hours

---

Monday – Saturday: **9:00 - 21:00** EDT

Sunday: **closed**

## Address

---



Harbour Towne Marina, 850 NE 3rd St,  
STE 213, Dania, FL 33004