

CHANGING CHANNELS — HUNTER



Builder: HUNTER

Year Built: 1993

Model: Cruising Sailboat

Price: PRICE ON APPLICATION

Location: United States

LOA: 35' 0" (10.67m)

Beam: 11' 9" (3.58m)

Min Draft: 4' 6" (1.37m)

Our experienced yacht broker, Andrey Shestakov, will help you choose and buy a yacht that best suits your needs **Changing Channels — HUNTER** from our catalogue. Presently, at Shestakov Yacht Sales Inc., we have a wide variety of yachts available on our sale's list. We also work in close contact with all the big yacht manufacturers from all over the world.

If you would like to buy a yacht **Changing Channels — HUNTER** or would like help answering any questions concerning purchasing, selling or chartering a yacht, please call **+1(954)274-4435**

TABLE OF CONTENTS

TABLE OF CONTENTS	2
SPECIFICATIONS	5
Overview	5
Basic Information	5
Dimensions	5
Speed, Capacities and Weight	5
Accommodations	5
Hull and Deck Information	5
Engine Information	6
DETAILED INFORMATION	7
Hunter Legend 35.5 Accommodations	7
Hunter Legend 35.5 Galley	7
Hunter Legend 35.5 Hull and Deck	7
Hunter Legend 35.5 Electronics	8
Hunter Legend 35.5 Sails and Rigging	8
Hunter Legend 35.5 Plumbing and Electrical	9
Hunter Legend 35.5 Disclosure	9
Exclusions	9
Disclaimer	10
PHOTOS	11
35' Hunter Main Saloon	11
35' Hunter Anchor and Bow	11
35' Hunter Mast & Hatch	11
35' Hunter Eisenglass Enclosure	11
35' Hunter Portside Deck	12
35' Hunter Swim Platform	12
35' Hunter Transom Seating from Port	12
35' Hunter Wheel from Stern	12

35&apos Hunter Transom Seating from Starboard	13
35&apos Hunter Forward Hatch	13
35&apos Hunter Main Mast	13
35&apos Hunter Front Isinglass	13
35&apos Hunter Helm Bimini	13
35&apos Hunter Winch	13
35&apos Hunter Line Clutches	14
35&apos Hunter Main Saloon from Aft	14
35&apos Hunter Settee Starboard	14
35&apos Hunter Dinette Port	14
35&apos Hunter Galley Stove and Oven	14
35&apos Hunter Galley	14
35&apos Hunter Teak and Holly Sole	15
35&apos Hunter V-berth	15
35&apos Hunter V-berth Locker	15
35&apos Hunter Saloon Fwd to Aft	15
35&apos Hunter Double Quarter Berth Cabin	16
35&apos Hunter Nav Station	16
35&apos Hunter Head & Sink	16
35&apos Hunter Double Quarter Berth Cabin Aft Port	16
35&apos Hunter Shower	17
35&apos Hunter Main Engine from Access	17
35&apos Hunter Main Engine Fwd	17
35&apos Hunter Main Engine Above	17
35&apos Hunter Battery Selector and Shore Pwr.	18
35&apos Hunter 35 Amp Battery Charger	18
35&apos Hunter Raymarine Auto Pilot Controller	18
35&apos Hunter Raymarine Instrument Cluster	18
35&apos Hunter Garmin GPSMap 440 Chartplotter	18

CONTACTS	19
-----	-----
Contact details	19
-----	-----
Telephones	19
-----	-----
Office hours	19
-----	-----
Address	19
-----	-----

SPECIFICATIONS

Overview

This well maintained Hunter 35.5 is ideal for a couple or family that want to cruise together. The 4 opening hatches, 6 opening ports and 2 skylights help give this boat a bright and inviting interior.

Basic Information

Category: Cruising Sailboat

Model Year: 1993

Year Built: 1993

Country: United States

Dimensions

LOA: 35' 0" (10.67m)

LWL: 29' 9" (9.07m)

Beam: 11' 9" (3.58m)

Min Draft: 4' 6" (1.37m)

Speed, Capacities and Weight

Displacement: 1300 Pounds

Water Capacity: 64 Gallons

Fuel Capacity: 22 Gallons

Accommodations

Total Cabins: 2

Total Heads: 1

Hull and Deck Information

Hull Material: Fiberglass

Hull Configuration: Monohull

Engine Information

Engines: 1

Manufacturer: Yanmar

Model: 3GM30

Engine Type: Inboard

Fuel Type: Diesel

DETAILED INFORMATION

Hunter Legend 35.5 Accommodations

Teak-and holly sole

2 Cabins: Aft cabin includes athwart ships berth under cockpit (extra-long double) with foam mattress (2015); single locker to port, storage shelves to starboard and built-in book shelf.

Main cabin includes Galley to port, convertible settee and adjustable dinette table to port (sleeps two); single settee on starboard with captain's table/electrical panel and generous storage in 4 cabinets and under settees.

Forward cabin includes V-berth - sleeps 2 comfortably, storage shelves, 2 lockers and additional storage below V-berth.

Enclosed aft head with separate shower stall and vanity w/Corian countertop

4 opening hatches, 6 opening ports and 2 skylights

Hunter Legend 35.5 Galley

2 burner CNG stove w/ oven and butcher block cutting board

Double stainless sinks

Corian countertops

3 storage lockers, 4 drawers and shelf

12V refrigeration/freezer

6 gal. water heater

Pressure fresh water system

Hunter Legend 35.5 Hull and Deck

Stainless steel bow and stern pulpits w/seats

Double lifelines with gates

Cabin handrails

Anodized aluminum toe rail

Two-tone nonskid deck

Bimini, Dodger + connector (2015) and full cockpit enclosure

Anchors - 35lb Delta, 23lb Danforth, FX16 (collapsible)

Anchor-well

Bow roller

Manual windlass

T-cockpit w/removable helm seat

Walk-through transom

5 Lockers

Aft cockpit shower

Swim platform with stainless ladder

Hunter Legend 35.5 Electronics

VHF-2012 Standard Horizon GX2100 VHF Matrix AIS receiver + cockpit remote

2012 Raymarine 60+ Digital Knot meter

Depth Sounder and Annometer

2012 Ray Marine EV-100 auto-pilot

Garmin 440 GPS Chart Plotter

FM radio/cassette w/ 2 cabin speakers and 2 cockpit speakers

Lighted compass.

Hunter Legend 35.5 Sails and Rigging

Double spreader fractional rig and split backstay

Hood roller furling 130 Genoa (2012)

Full batten Main w/Jiffy Reefing (2011)

Cruising spinnaker w/sock

Whisker Pole and mast mount

Manual boomvang

4 Self-tailing Barent Winches

Inboard Genoa tracks

All control lines lead to cockpit through line stoppers

Hunter Legend 35.5 Plumbing and Electrical

Dual 12V battery system

Separate starting battery

440 amp hour house bank

Amp hour monitor

3 stage regulator

Dockside power 110V

3 step battery charger

30amp shore power chord

12V fresh water system

64 gal. fresh water tank supplies hot/cold water to galley, head, shower stall and cockpit shower

Manual head (2014)

25 gal. Holding tank

Hunter Legend 35.5 Disclosure

The Company offers the details of this vessel in good faith but cannot guarantee or warrant the accuracy of this information nor warrant the condition of the vessel. A buyer should instruct his agents, or his surveyors, to investigate such details as the buyer desires validated. This vessel is offered subject to prior sale, price change, or withdrawal without notice.

Exclusions

Owner's personal belongings.

Disclaimer

The Company offers the details of this vessel or yacht in good faith but cannot guarantee or warrant the accuracy of this information nor warrant the condition of the vessel. A buyer should instruct his representatives, agents, or his surveyors, to investigate such details as the buyer desires validated. This vessel or yacht is offered subject to prior sale, price change, or withdrawal without notice.

PHOTOS

35' Hunter Main Saloon



35' Hunter Anchor and Bow



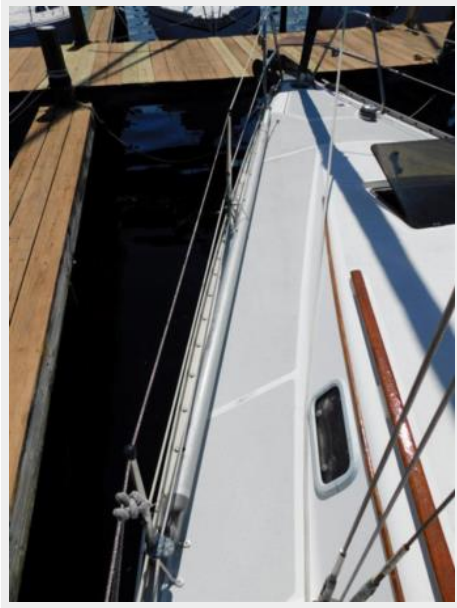
35' Hunter Mast & Hatch



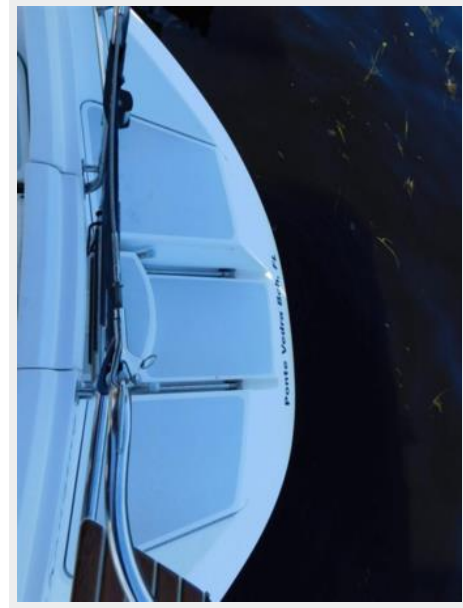
35' Hunter Eisenglass Enclosure



35' Hunter Portside Deck



35' Hunter Swim Platform



35' Hunter Transom Seating from Port



35' Hunter Wheel from Stern



35' Hunter Transom Seating from Starboard



35' Hunter Forward Hatch



35' Hunter Main Mast



35' Hunter Front Isinglass



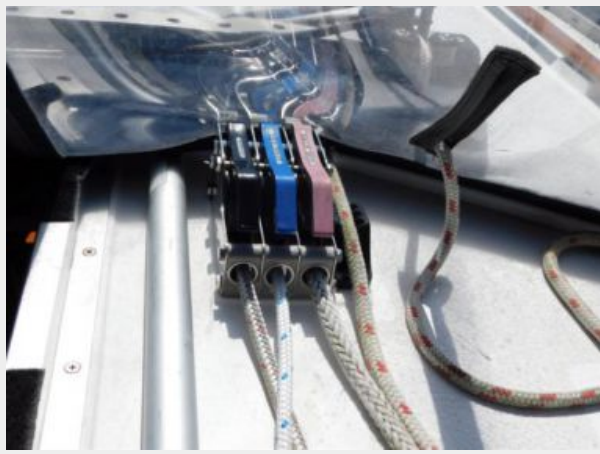
35' Hunter Helm Bimini



35' Hunter Winch



35 Hunter Line Clutches



35 Hunter Main Saloon from Aft



35 Hunter Settee Starboard



35 Hunter Dinette Port



35 Hunter Galley Stove and Oven



35 Hunter Galley



35 Hunter Teak and Holly Sole



35 Hunter V-berth



35 Hunter V-berth Locker



35 Hunter Saloon Fwd to Aft



35' Hunter Double Quarter Berth Cabin

35' Hunter Nav Station



35' Hunter Double Quarter Berth Cabin Aft Port



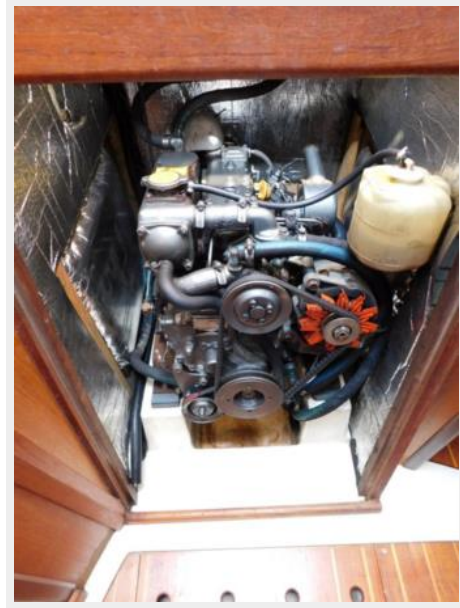
35' Hunter Head & Sink



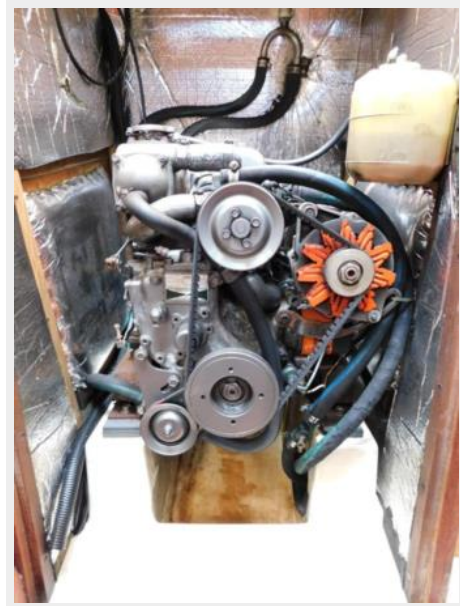
35's Hunter Shower



35's Hunter Main Engine from Access



35's Hunter Main Engine Fwd



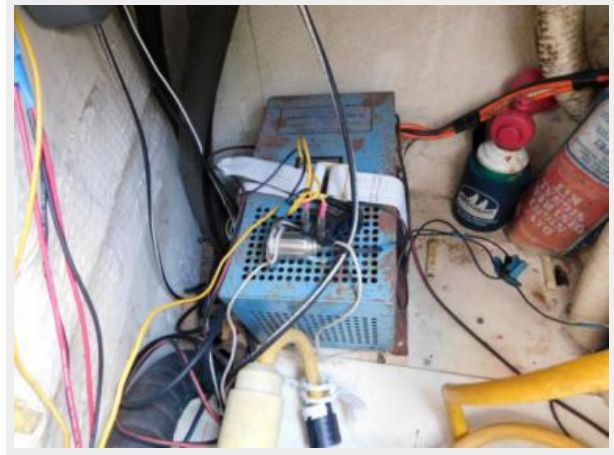
35's Hunter Main Engine Above



35&apos Hunter Battery Selector and Shore Pwr.



35&apos Hunter 35 Amp Battery Charger



35&apos Hunter Raymarine Auto Pilot Controller



35&apos Hunter Raymarine Instrument Cluster



35&apos Hunter Garmin GPSMap 440 Chartplotter



CONTACTS

Andrey Shestakov, leading yacht broker of the sales department of Shestakov Yacht Sales Inc. Shestakov Yacht Sales Inc., the official representative of the Miami/Fort Lauderdale FL headquarters.

Contact details

Email: andrey@shestakovyachtsales.com

Web: shestakovyachtsales.com/en/

Telephones

USA: +1(954)274-4435

Office hours

Monday – Saturday: **9:00 - 21:00** EDT

Sunday: **closed**

Address



Harbour Towne Marina, 850 NE 3rd St,
STE 213, Dania, FL 33004