

AVATAR — SEA RAY



Builder: [SEA RAY](#)

Year Built: 1999

Model: Motor Yacht

Price: PRICE ON APPLICATION

Location: United States

LOA: 56' 0" (17.07m)

Beam: 16' 0" (4.88m)

Max Draft: 4' 6" (1.37m)

Our experienced yacht broker, Andrey Shestakov, will help you choose and buy a yacht that best suits your needs **Avatar — SEA RAY** from our catalogue. Presently, at Shestakov Yacht Sales Inc., we have a wide variety of yachts available on our sale's list. We also work in close contact with all the big yacht manufacturers from all over the world.

If you would like to buy a yacht **Avatar — SEA RAY** or would like help answering any questions concerning purchasing, selling or chartering a yacht, please call **+1(954)274-4435**

TABLE OF CONTENTS

TABLE OF CONTENTS	2
SPECIFICATIONS	5
Basic Information	5
Dimensions	5
Accommodations	5
Hull and Deck Information	5
Engine Information	5
DETAILED INFORMATION	6
Vessel Highlights	6
Salon	6
Galley	6
Master Stateroom	7
VIP Stateroom, Starboard	7
Guest Port Stateroom	7
Crew Quarters	8
Flybridge	8
Electronics & Navigational Equipment	8
Cockpit	8
Deck & Exterior	9
Electrical System	9
Engine Room & Mechanical Equipment	9
Exclusions	9
Exclusions	10
Disclaimer	10
PHOTOS	11
Salon	11
Salon	11
Salon	11

Salon	11
Salon	11
Salon	11
Custom Salon TV	12
Salon	12
Galley	12
Galley	12
Galley	12
Galley	12
Dinette	13
Master Stateroom	13
Master Stateroom	13
Master Stateroom	13
Master Stateroom	14
Master Head	14
Master Head	14
Master Head	14
Starboard Guest Stateroom	15
Starboard Guest Stateroom	15
Port Guest Stateroom	15
Guest Head	15
Guest Head	16
Crew Quarters	16
Helm Electronics	16
Helm	16
Helm	17
Flybridge	17
Flybridge	17
Flybridge	17

Flybridge	18
Flybridge	18
Cockpit	18
Cockpit	18
Cockpit	18
Cockpit	18
Cockpit	19
Engine Room	19
Engine Room	19
Engine Room	19
Engine Room	19
Engine Room	19
Engine Room	19
Engine Room	20
Engine Room	20
Engine Room	20
Bow	20
Bow	20
Bow Profile	20
Aft - Tender 13' 9"	21
Avatar	21
CONTACTS	22
Contact details	22
Telephones	22
Office hours	22
Address	22

SPECIFICATIONS

Basic Information

Category: Motor Yacht

Sub Category: Cruiser

Model Year: 1999

Year Built: 1999

Country: United States

Dimensions

LOA: 56' 0" (17.07m)

Beam: 16' 0" (4.88m)

Max Draft: 4' 6" (1.37m)

Accommodations

Total Cabins: 3

Hull and Deck Information

Hull Material: Fiberglass

Engine Information

Engines: 2

Manufacturer: Caterpillar

Model: 3406

Engine Type: Inboard

Fuel Type: Diesel

DETAILED INFORMATION

Vessel Highlights

Vessel Highlights Include:

- **3 Stateroom, 2 Heads + Crew Quarters**
- **Cherry Interior**
- **Incredibly Well Maintained**
- **Crew Quarters**
- **TNT Hydraulic Swim Platform, Retrofitted 2013**
- **3406 Caterpillars with 1156 Hours**
- **New Enclosure, 2013**
- **13'9" Zodiac with 50hp four stroke Yamaha (50 hours)**
- **Bow Thruster**
- **Helm Air Conditioning**
- **SAT TV, Tracvision**
- **Upgraded Electronics**
- **Spare Propellers**
- **Hide-A-Bed in Salon, Sleeps 2**
- **Teak Deck**

Salon

- Hide-A-Bed (sleeps 2)
- Port and starboard salon couches
- DVD player
- Carpet runners
- Hi/Low cocktail table
- Window treatments and blinds
- Storage
- Large sliding door wall with screen from cockpit
- Direct lighting
- Indirect lighting
- 50" Samsung flat screen TV

Galley

- Sub Zero refrigerator
- Sub Zero Freezer
- Wood flooring
- Sharp convection microwave

- Plenty of cabinetry and drawer storage
- Kenyon three-burner range
- Exhaust fan
- Adjacent facing dinette
- Coffee maker
- Sink and faucet

Master Stateroom

- Island queen berth
- Vanity, mirrors, stool, cabinetry
- TV, VCR, Bose stereo,
- Hanging locker
- Ensuite head with cabinetry storage and enclosed shower
- Full length mirrors
- Drawers
- Direct lighting
- Indirect lighting
- Reading lights
- Deck hatch with screen and shade

VIP Stateroom, Starboard

- Full size berth
- Vanity with mirrors, storage, drawers, stool
- Under berth drawers
- TV/VCR
- Direct lighting
- Access to guest head
- Circular skylight
- Hanging locker
- Large mirrors
- Indirect lighting
- Reading lights

Guest Port Stateroom

- Upper and lower berths
- TV/VCR
- Hanging locker
- Washer/Dryer unit
- Direct lighting

- Indirect lighting
- Reading lights
- Deck hatch with screen and shade

Crew Quarters

- Single berth
- Electric head
- Sink and mirror
- Port hole

Flybridge

- Hardtop with four-sided enclosure
- U-shaped lounge seating forward with adjustable table
- Entertainment center
- U-line ice maker
- Tundra refrigerator
- Sink
- Carpeting
- Large bench seat aft of helm chairs
- Plenty of storage
- Molded in staircase to bridge
- AC/heat
- New helm chairs, 2015

Electronics & Navigational Equipment

- Garmin 3010 C
- Garmin 5212
- Furuno Navnet (Plotter & Radar)
- (2) ICOM VHF radios
- Simrad AP300X autopilot
- Clarion stereo
- ST60 Ray Tri-Data
- RCL-1000 spotlight
- American bow thruster controls
- Bennett trim tab indicators
- Sea Ray system monitor

Cockpit

- Aft seating
- Cockpit table
- Teak deck
- Sliding glass door with screen to salon
- Haunch storage
- Engine room and lazarette access
- Hot/cold water shower
- Transom gate
- TV/phone connection
- Molded staircase to bridge with step storage

Deck & Exterior

- TNT hydraulic lifting platform (Rebuilt 2015)
- American bow thruster
- Glendinning shore cord, retrieval
- Fresh water washdowns
- Dual trumpet horns

Electrical System

- Emergency battery parallel
- Generator-21kW Westerbeke (1200 hours)
- Cruisair reverse cycle AC/heat
- (4) 8D maintenance free batteries
- 50 amp 240 volt power cord with Glendinning cablemaster
- 50 amp 120 volt power cord with Glendinning cablemaster
- Phone/TV connection in cockpit

Engine Room & Mechanical Equipment

- Twin 3406 Caterpillar 800hp
- Twin Disc transmission
- Dripless shaft seals
- Reverso oil change system
- Auto fire suppression
- 30 Amp battery charger
- Racor fuel filters

Exclusions

Dinghy not included.

Exclusions

Owner's personal belongings.

Disclaimer

The Company offers the details of this vessel or yacht in good faith but cannot guarantee or warrant the accuracy of this information nor warrant the condition of the vessel. A buyer should instruct his representatives, agents, or his surveyors, to investigate such details as the buyer desires validated. This vessel or yacht is offered subject to prior sale, price change, or withdrawal without notice.

PHOTOS

Salon



Salon



Salon



Salon



Salon



Salon



Salon



Custom Salon TV



Galley



Galley



Galley



Galley



Dinette



Master Stateroom



Master Stateroom



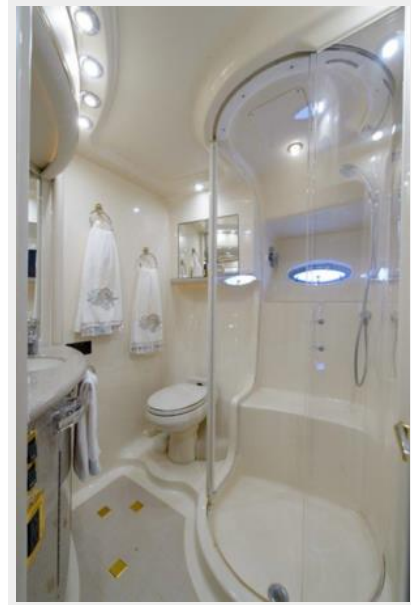
Master Stateroom



Master Stateroom



Master Head



Master Head



Master Head



Starboard Guest Stateroom



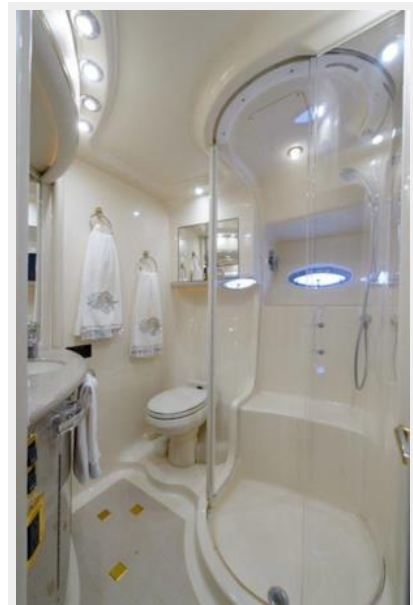
Starboard Guest Stateroom



Port Guest Stateroom



Guest Head



Guest Head



Crew Quarters



Helm Electronics



Helm



Helm



Flybridge



Flybridge



Flybridge



Flybridge



Flybridge



Cockpit



Cockpit



Cockpit



Cockpit



Cockpit



Engine Room



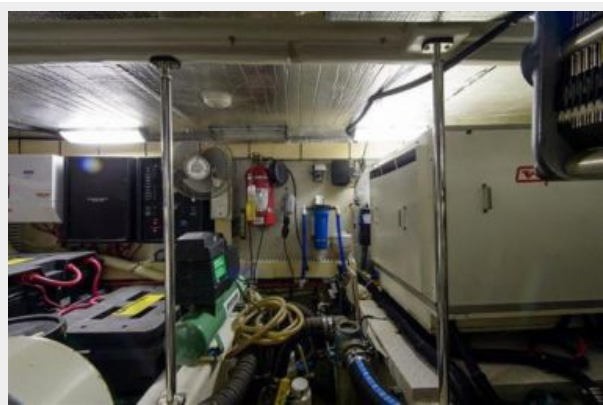
Engine Room



Engine Room



Engine Room



Engine Room



Engine Room



Engine Room



Engine Room



Bow



Bow



Bow Profile



Aft - Tender 13' 9"



Avatar



CONTACTS

Andrey Shestakov, leading yacht broker of the sales department of Shestakov Yacht Sales Inc. Shestakov Yacht Sales Inc., the official representative of the Miami/Fort Lauderdale FL headquarters.

Contact details

Email: andrey@shestakovyachtsales.com

Web: shestakovyachtsales.com/en/

Telephones

USA: +1(954)274-4435

Office hours

Monday – Saturday: **9:00 - 21:00** EDT

Sunday: **closed**

Address



Harbour Towne Marina, 850 NE 3rd St,
STE 213, Dania, FL 33004