

VICTORIA — INACE



Builder: INACE

Year Built: 2006

Model: expedition yacht

Price: \$3,350,000 USD

Location: Brazil

LOA: 105' 11" (32.28mm)

Beam: 23.41

Min Draft: 7' 8" (2.34mm)

Cruise Speed: 10 Knots Kts. (12 MPH)

Max Speed: 13 Knots Kts. (15 MPH)

Our experienced yacht broker, Andrey Shestakov, will help you choose and buy a yacht that best suits your needs **Victoria — INACE** from our catalogue. Presently, at Shestakov Yacht Sales Inc., we have a wide variety of yachts available on our sale's list. We also work in close contact with all the big yacht manufacturers from all over the world.

If you would like to buy a yacht **Victoria — INACE** or would like help answering any questions concerning purchasing, selling or chartering a yacht, please call **+1(954)274-4435**

TABLE OF CONTENTS

TABLE OF CONTENTS	2
SPECIFICATIONS	4
Overview	4
Basic Information	4
Dimensions	4
Speed, Capacities and Weight	4
Accommodations	4
Hull and Deck Information	5
Engine Information	5
PHOTOS	6
Main Salon	6
Dining Salon	6
Dining Salon	6
Main Salon Bar	6
Master Stateroom	6
Skylounge	6
Master, Port Side	7
Master Stateroom	7
Master Head, His	7
Master Head, Hers	7
Stairs to bridge deck	8
Stairs to lower deck	8
Corridor	8
Queen Stateroom	8
Twin Berth Cabin	9
Galley	9
Laundry	9
Galley Passthrough	9

Pilothouse	9
Wheelhouse	9
Aft deck dining	10
Skylounge	10
Skylounge aft deck	10
Skylounge	10
Skylounge Aft Deck	10
Jacuzzi	10
Flybridge looking aft	11
Flybridge Lounge	11
Flybridge helm	11
Flybridge Dining	11
Flybridge Aft Deck	11
Flybridge Aft Deck	11
Victoria	12
Layout, Main and Lower Decks	12
Line Drawing, Profile	12
Layout, Flybridge and Upper Deck	12
CONTACTS	13
Contact details	13
Telephones	13
Office hours	13
Address	13

SPECIFICATIONS

Overview

The 105.97ft /32.3m Explorer 105 expedition Victoria was built in 2006 by Inace. Her elegant exterior and interior styling are the work of Inace, who is also responsible for her engineering.

Basic Information

Category: expedition yacht

Sub Category: Expedition or Explorer

Model Year: 2006

Year Built: 2006

Country: Brazil

Dimensions

LOA: 105' 11" (32.28mm)

LWL: 97' 5" (29.69mm)

LOD: 98' 11" (30.15mm)

Beam: 23.41

Min Draft: 7' 8" (2.34mm)

Speed, Capacities and Weight

Cruise Speed: 10 Knots Kts. (12 MPH)

Cruise Speed Range: 4700

Max Speed: 13 Knots Kts. (15 MPH)

Gross Tonnage: 230 Pounds

Water Capacity: 9800 Gallons

Fuel Capacity: 17131.56 Gal Gallons

Accommodations

Total Cabins: 4

Total Berths: 5

Sleeps: 8

Total Heads: 4

Crew Cabin: 5

Hull and Deck Information

Hull Material: Steel

Hull Color: White

Hull Designer: Inace

Exterior Designer: Inace

Interior Designer: Inace

Engine Information

Engines: 2

Manufacturer: Volvo Penta

Engine Type: Inboard

Fuel Type: Diesel

PHOTOS

Main Salon



Dining Salon



Dining Salon



Main Salon Bar



Skylounge



Master Stateroom



Master Stateroom



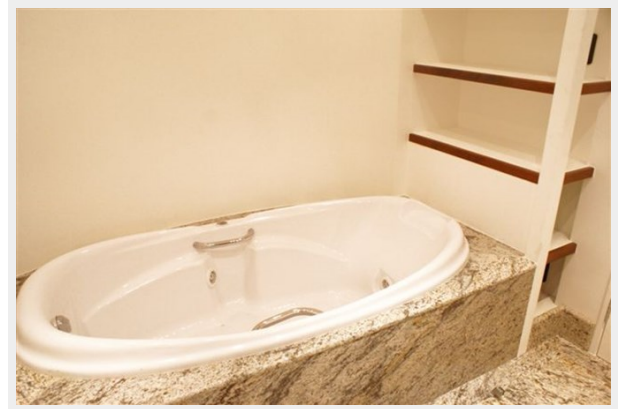
Master, Port Side



Master Head, His



Master Head, Hers



Stairs to bridge deck



Stairs to lower deck



Corridor



Queen Stateroom



Twin Berth Cabin



Galley



Laundry



Galley Passthrough



Pilothouse



Wheelhouse



Aft deck dining



Skylounge



Skylounge aft deck



Skylounge



Skylounge Aft Deck



Jacuzzi



Flybridge looking aft



Flybridge Lounge



Flybridge helm



Flybridge Dining



Flybridge Aft Deck



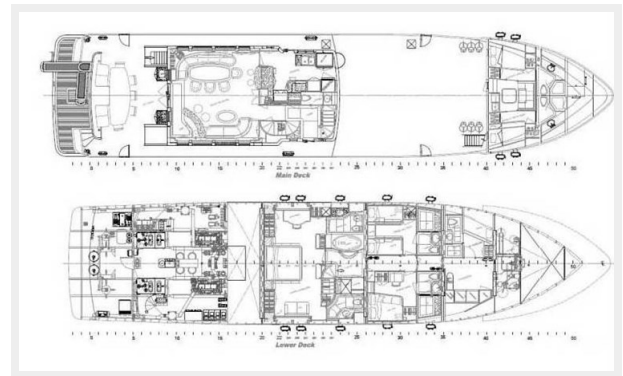
Flybridge Aft Deck



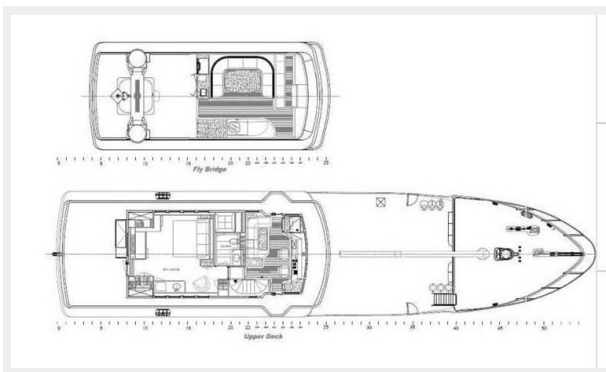
Victoria



Layout, Main and Lower Decks



Layout, Flybridge and Upper Deck



Line Drawing, Profile



CONTACTS

Andrey Shestakov, leading yacht broker of the sales department of Shestakov Yacht Sales Inc. Shestakov Yacht Sales Inc., the official representative of the Miami/Fort Lauderdale FL headquarters.

Contact details

Email: andrey@shestakovyachtsales.com

Web: shestakovyachtsales.com/en/

Telephones

USA: +1(954)274-4435

Office hours

Monday – Saturday: **9:00 - 21:00** EDT

Sunday: **closed**

Address



Harbour Towne Marina, 850 NE 3rd St,
STE 213, Dania, FL 33004