

## REEL GONE — VIKING



**Builder:** VIKING

**Year Built:** 1996

**Model:** Sport Fisherman

**Price:** PRICE ON APPLICATION

**Location:** United States

**LOA:** 47' 0" (14.33m)

**Beam:** 15' 6" (4.72m)

**Max Draft:** 4' 5" (1.35m)

**Cruise Speed:** 26 Kts. (30 MPH)

**Max Speed:** 30 Kts. (35 MPH)

Our experienced yacht broker, Andrey Shestakov, will help you choose and buy a yacht that best suits your needs **Reel Gone — VIKING** from our catalogue. Presently, at Shestakov Yacht Sales Inc., we have a wide variety of yachts available on our sale's list. We also work in close contact with all the big yacht manufacturers from all over the world.

If you would like to buy a yacht **Reel Gone — VIKING** or would like help answering any questions concerning purchasing, selling or chartering a yacht, please call **+1(954)274-4435**

---

# TABLE OF CONTENTS

---

TABLE OF CONTENTS	2
SPECIFICATIONS	3
Overview	3
Basic Information	4
Dimensions	4
Speed, Capacities and Weight	4
Accommodations	4
Hull and Deck Information	4
Engine Information	5
PHOTOS	6
CONTACTS	16
Contact details	16
Telephones	16
Office hours	16
Address	16

---

# SPECIFICATIONS

---

## Overview

---

Preliminary Listing - Check Back for More Details. "**Reel Gone**" is a solid example of the popular Viking 47' Convertible. Powered by reliable MAN 2848 800hp engines with 580 hours SMO (all receipts available) and the 1,000 hour service completed in February 2017 (all receipts available), she is all set to provide her next owner with years of enjoyment. The list of recent upgrades is extensive. Some of the most notable include: 2014:

- New Garmin electronics package (three 7212 screens!).
- New washer and dryer.
- New underwater lights.
- New Samsung flat-screen TV in salon.
- New ACR remote spotlight.
- There is more.....

2015:

- New Simrad AP-28 autopilot.
- New Chirp Transducer.
- There is more....

2016:

- New AC Condenser in stateroom.
- New AC Evaporators (two).
- New head vacuum pumps (two).
- New starboard shower sump pump.
- New Hotpoint fridge/freezer in galley.
- New Amtico teak and holly floors in both heads.
- There is more....

2017:

- 1,000 hour service performed on both MAN engines.
- New EZ2CY enclosure
- There is more....

All receipts for the above listed items, plus the multitude that are not listed, are available in an orderly binder. Prior work receipts are also available, including the re-builds of the MANs. We have the receipts!

---

## Basic Information

---

**Category:** Sport Fisherman

**Sub Category:** Convertible

**Model Year:** 1996

**Year Built:** 1996

**Country:** United States

---

## Dimensions

---

**LOA:** 47' 0" (14.33m)

**Beam:** 15' 6" (4.72m)

**Max Draft:** 4' 5" (1.35m)

---

## Speed, Capacities and Weight

---

**Cruise Speed:** 26 Kts. (30 MPH)

**Max Speed:** 30 Kts. (35 MPH)

**Displacement:** 46300 Pounds

**Water Capacity:** 160 Gallons

**Fuel Capacity:** 700 Gallons

---

## Accommodations

---

**Total Cabins:** 2

**Total Heads:** 2

---

## Hull and Deck Information

---

**Hull Material:** Fiberglass

---

## Engine Information

---

**Engines:** 2

**Manufacturer:** MAN

**Model:** 2848LE403

**Engine Type:** Inboard

**Fuel Type:** Diesel

# PHOTOS

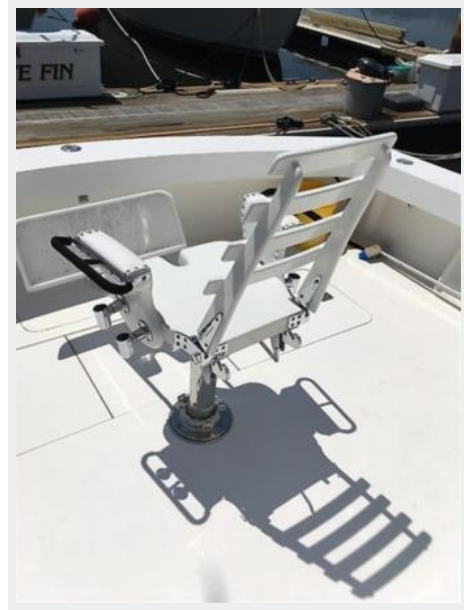






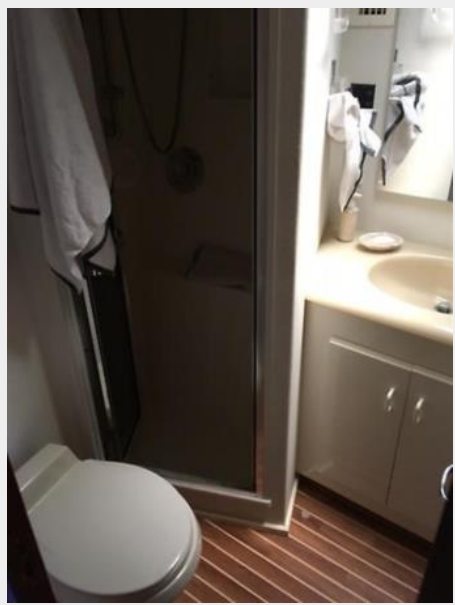


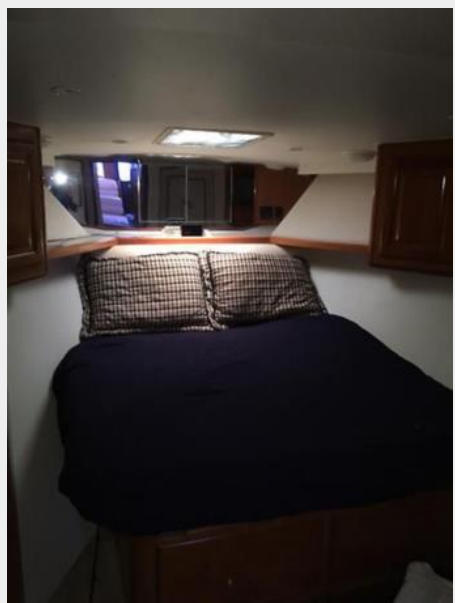














# CONTACTS

---

Andrey Shestakov, leading yacht broker of the sales department of Shestakov Yacht Sales Inc. Shestakov Yacht Sales Inc., the official representative of the Miami/Fort Lauderdale FL headquarters.

## Contact details

---

Email: [andrey@shestakovyachtsales.com](mailto:andrey@shestakovyachtsales.com)

Web: [shestakovyachtsales.com/en/](http://shestakovyachtsales.com/en/)

## Telephones

---

USA: +1(954)274-4435

## Office hours

---

Monday – Saturday: **9:00 - 21:00** EDT

Sunday: **closed**

## Address

---



Harbour Towne Marina, 850 NE 3rd St,  
STE 213, Dania, FL 33004