

40FT 2007 DORAL MEDITERRA — DORAL



Builder: DORAL

Year Built: 2007

Model: Motor Yacht

Price: PRICE ON APPLICATION

Location: United States

LOA: 40' 0" (12.19m)

Beam: 13' 3" (4.04m)

Max Draft: 3' 8" (1.12m)

Cruise Speed: 30 Kts. (35 MPH)

Our experienced yacht broker, Andrey Shestakov, will help you choose and buy a yacht that best suits your needs 40ft 2007 Doral Mediterra — DORAL from our catalogue. Presently, at Shestakov Yacht Sales Inc., we have a wide variety of yachts available on our sale's list. We also work in close contact with all the big yacht manufacturers from all over the world.

If you would like to buy a yacht 40ft 2007 Doral Mediterra — DORAL or would like help answering any questions concerning purchasing, selling or chartering a yacht, please call +1(954)274-4435

TABLE OF CONTENTS

TABLE OF CONTENTS	2
SPECIFICATIONS	3
Overview	3
Basic Information	3
Dimensions	3
Speed, Capacities and Weight	4
Accommodations	4
Hull and Deck Information	4
Engine Information	4
DETAILED INFORMATION	5
Just Serviced - 7/2017	5
Accommodations	5
Interior Features	5
Electronics	6
Cockpit & Foredeck Equipment	6
Exclusions	6
Disclaimer	6
PHOTOS	7
CONTACTS	16
Contact details	16
Telephones	16
Office hours	16
Address	16

SPECIFICATIONS

Overview

Roomy and robust 40' Doral Mediterra with gorgeous Silver hull side paint. Excellent access fore and aft with a walk-through windshield and double centerline transom door. Social seating in the cockpit is accented with a grill and sink. Down in the cabin, you are greeted with gorgeous cherry wood and teak and holly floors accented with deep pile carpeting. The galley is fully equipped to port, with Master forward and a Guest stateroom aft, both with ensuite heads.

Manufacturer's Overview:

The Doral Mediterra 40 is powered by Volvo Penta IPS500 pods. As verified by Boat Test, her cruising sweet spot is 30 mph, consuming an efficient 1.25 mpg, and topping out at 40 mph. Around the docks, the joy stick makes for no-fuss maneuvering. Her deep V hull and lower center of gravity make her an exceptional blue water yacht.

This is no high-production sports cruiser. Doral's attention to detail, quality engineering, and craftsmanship are best in class.

There are two staterooms and two heads, and the benefits of design elements that any cruising owners would appreciate. For example, the one level cockpit and helm sole make for a much safer, comfortable, and congenial space.

Basic Information

Category: Motor Yacht

Sub Category: Cruiser

Model Year: 2007

Year Built: 2007

Country: United States

Dimensions

LOA: 40' 0" (12.19m)

Beam: 13' 3" (4.04m)

Max Draft: 3' 8" (1.12m)

Speed, Capacities and Weight

Cruise Speed: 30 Kts. (35 MPH)

Displacement: 25000 Pounds

Water Capacity: 80 Gallons

Holding Tank: 33 Gallons

Fuel Capacity: 294 Gallons

Accommodations

Total Cabins: 2

Total Berths: 2

Total Heads: 2

Hull and Deck Information

Hull Material: Fiberglass

Engine Information

Engines: 2

Manufacturer: Volvo Penta

Model: IPS500

Engine Type: Inboard

Fuel Type: Diesel

DETAILED INFORMATION

Just Serviced - 7/2017

Full bottom job including prop speed on the drives and new zincs.

Full buff and wax to entire boat

Full interior detail in cabin

Full services on engines, generator and drives

Accommodations

The master stateroom features an island queen centerline berth. To the port side a vanity with cabinet and mirror. A Sharp LCD/TV is mounted on the starboard aft wall for your personal movie entertainment. The forward cabin head has a fiberglass vanity with Karadon solid surface top, medicine cabinet, Vacu-flush toilet, deluxe faucet and separate shower with removable drain floor.

The guest mid-cabin is set up with a full-size twin berth with ample overhead clearance and also a set of three storage drawers and a cedar-lined closet.

The ensuite guest head has an overhead shower with full vanity/sink and marine head.

Interior Features

- Makore Wood Interior
- Central Vac
- Clarion AM/FM Stereo/CD player in Cockpit
- DVD Player in Saloon
- 23" Samsung LCD TV in Saloon
- 13" Sharp Aquos LCD TV in Master
- Electric bilge pump
- Victron Battery charger
- 6.2-cu-ft. Nova Kool Refrigerator and 6.2-cu-ft Freezer
- Raritan Ice Maker
- Corian Countertops
- Air conditioning with Reverse Heat
- Tappan Microwave / Convection oven

Electronics

- (2) Raymarine E-120 Series Displays
- Raymarine ST8002 Autopilot
- Danforth Compass
- Raymarine 4-kW Radar
- Raymarine Depth
- KVH Tracvision / HD Direct TV Receiver
- Raymarine 54 VHF Radio

Cockpit & Foredeck Equipment

- Cockpit table
- Cockpit shower
- Swimming ladder
- Electric windlass
- Norcold Cockpit Refrigerator/Freezer
- Uline Ice Maker
- Princess Barbecue

Exclusions

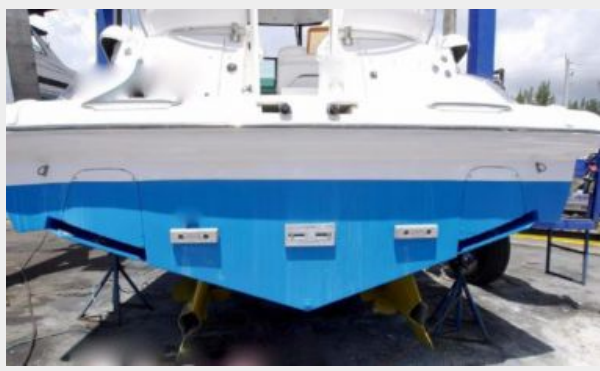
Owner's personal belongings.

Disclaimer

The Company offers the details of this vessel or yacht in good faith but cannot guarantee or warrant the accuracy of this information nor warrant the condition of the vessel. A buyer should instruct his representatives, agents, or his surveyors, to investigate such details as the buyer desires validated. This vessel or yacht is offered subject to prior sale, price change, or withdrawal without notice.

PHOTOS





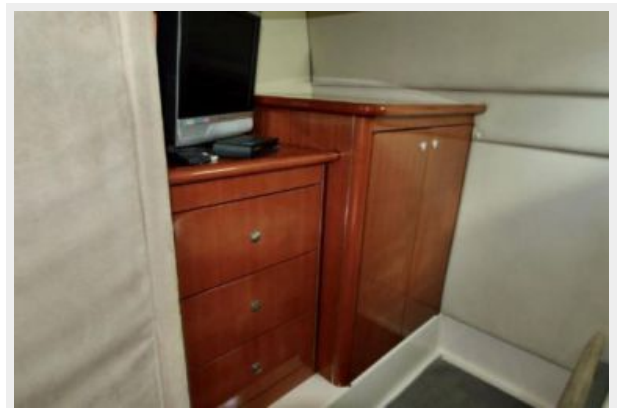
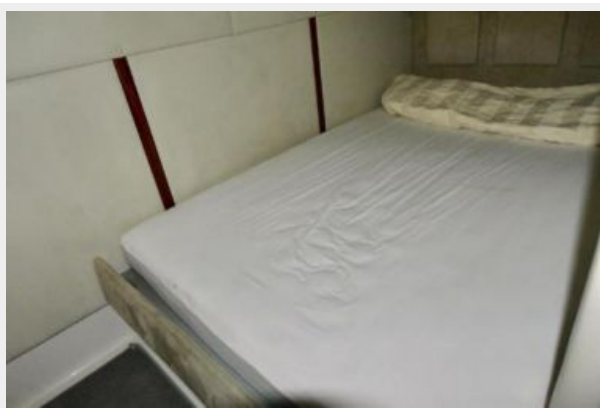














CONTACTS

Andrey Shestakov, leading yacht broker of the sales department of Shestakov Yacht Sales Inc. Shestakov Yacht Sales Inc., the official representative of the Miami/Fort Lauderdale FL headquarters.

Contact details

Email: andrey@shestakovyachtsales.com

Web: shestakovyachtsales.com/en/

Telephones

USA: +1(954)274-4435

Office hours

Monday – Saturday: **9:00 - 21:00** EDT

Sunday: **closed**

Address



Harbour Towne Marina, 850 NE 3rd St,
STE 213, Dania, FL 33004