

# 42FT 2009 JEANNEAU SUN ODYSSEY 42 DS — JEANNEAU



**Судостроитель:** JEANNEAU

**Год постройки:** 2009

**Модель:** Крейсерская яхта

**Цена:** ЦЕНА ЯХТЫ ПО ЗАПРОСУ

**Местонахождение:** United States

**Длина общая:** 42' 0" (12.80m)

**Ширина:** 13' 6" (4.11m)

**Макс. осадка:** 7' 0" (2.13m)

Купить 42ft 2009 Jeanneau Sun Odyssey 42 DS — JEANNEAU а также выбрать подходящую вам яхту из нашего каталога яхт вам поможет опытный яхтенный брокер Андрей Шестаков. На сегодняшний день компания Shestakov Yacht Sales Inc. имеет большое количество яхт в собственном списке продаж, а также тесно сотрудничает со всеми крупными яхтенными производителями по всему миру.

Для того чтобы купить яхту 42ft 2009 Jeanneau Sun Odyssey 42 DS — JEANNEAU а также проконсультироваться по любому вопросу связанному с покупкой, продажей, чартером яхт позвоните по телефону **+7(918)465-66-44**.

# ОГЛАВЛЕНИЕ

ОГЛАВЛЕНИЕ	2
ХАРАКТЕРИСТИКИ	5
Обзор	5
Основная информация	5
Размеры	5
Скорость, вместимость и масса	6
Размещение	6
Корпус и палуба	6
ПОДРОБНОЕ ОПИСАНИЕ	7
Sail Area	7
Manufacturer Provided Description	7
Helm area	7
Accommodations	7
Electrical	8
Galley	8
Engine Information	8
Deck	9
Additional Description	9
Исключения	9
Отказ от ответственности	9
ФОТОГРАФИИ	10
Sailing	10
Motoring	10
Starboard Aft	10
Cockpit facing aft	10
Anchor locker	11
Looking aft from the bow	11
Starboard weather deck	11

Starboard Rope Clutches and Winch	11
Port Rope Clutches and Electric Winch	11
Port Rope Clutches and Electric Winch	11
Manual Bilge Pump and Winch Handle Pocket	12
Starboard cockpit locker	12
Port cockpit locker	12
Port side helm electronics	12
Starboard side helm electronics	12
Cockpit Shower	12
Propane Locker	13
Northern Lights Generator with 9000 hours	13
Cockpit table storage	13
Port Helm	13
Starboard Helm	13
Starboard Cockpit Seating	13
Port Cockpit seating	14
Galley	14
Galley	14
Galley A/C Control and Propane Control	14
Galley Storage	14
Galley Storage	14
Galley Storage	15
Galley Storage	15
Fridge/Freezer	15
Salon	15
Salon Table Expanded	15
Salon Table Expanded	15
Salon Table Wine Storage	16
Chart Table	16

---

Main Panel	16
Chart Table Storage	16
Storage above Port Setee	16
VHF, Stereo, and Storage	16
Navstation Chair	17
Looking fwd from Navstation	17
Engine Access	17
Engine Hour Meter	17
Yanmar Engine	17
Easy Access to Bilges	17
Walk Around Master	18
Tons of Storage in the Walk Around Master	18
Master Head	18
Storage in Master Head	18
Master Head	18
Forward VIP Cabin	19
Forward VIP Head	19
<b>КОНТАКТЫ</b>	<b>20</b>
Контактная информация	20
Телефоны	20
Время работы	20
Адрес	20

# ХАРАКТЕРИСТИКИ

## Обзор

***\$10,000.00 PRICE REDUCTION JUNE 7, 2017***

### ***BEST BUY ON THE MARKET***

The Jeanneau 42DS has long been considered one of the most well thought out designs to come out of Jeanneau's yard.

This yacht is not only designed to sail extremely well, but because of her deck salon arrangement she has TONS of room down below.

She has been well maintained for her absentee owners by a yacht management company here in the Virgin Islands.

Some key features:

- Generator was rebuilt late 2015
- The sails were replaced in 2013
- Replaced and upgraded batteries
- Full tropical A/C package
- Electric winch
- Furling Mainsail
- Full maintenance logs since new

## Основная информация

**Тип судна:** Крейсерская яхта

**Подкатегория:** Cruising/Racing Sailboat

**Модельный год:** 2009

**Год постройки:** 2009

**Страна:** United States

## Размеры

**Длина общая:** 42' 0" (12.80m)

**Длина по ватерлинии:** 42' 0" (12.80m)

**Ширина:** 13' 6" (4.11m)

**Макс. осадка:** 7' 0" (2.13m)

---

## Скорость, вместимость и масса

---

**Водоизмещение:** 6131 Pounds

**Вместимость воды:** 94 Gallons

**Вместимость сточного бака:** 22 Gallons

**Объем топливного бака:** 34 Gallons

---

## Размещение

---

**Всего кают:** 2

**Всего ком. состава:** 2

---

## Корпус и палуба

---

**Материал корпуса:** Fiberglass

**Комплектация корпуса:** Monohull

---

# ПОДРОБНОЕ ОПИСАНИЕ

---

## Sail Area

---

I : 51.58 ft J : 15.83 ft P : 49.83 ft E : 16.00 ft Working Sail Area : 872.00 sq ft

## Manufacturer Provided Description

---

Designed for those who are passionate about sailing, the Sun Odyssey 42DS boasts a modern, fluid design, a rare, timeless elegance, and the comfortable interior layout expected of a sailboat built for cruising, all while delivering a superior performance.

## Helm area

---

- Teak inlay on seating area, transom and transom steps
- Cockpit lockers: 2 lockers under bench seats and lazette locker to port under the helm seats for technical access to steering system
- Cockpit table: folding injected fibreglass table with storage, cup holders, bottle holders, stainless steel handrail, courtesy lighting, 12v plug
- Gas locker room for 2 gas bottles with connection to gas system and cut-off valve under stove in the galley
- Wheels: 2 leather-covered steering wheels and compasses at each helm station
- Instrumentation: dedicated space for instruments within easy reach of helm positions, room for GPS chartplotter mounted at aft end of cockpit table with easy viewing from each helm
- Engine controls: throttle and engine control panel mounted at starboard helm, engine panel includes fuel gauge, RPM gauge, warning lights, ignition
- Swim ladder: stainless steel folding ladder mounted on swim platform
- Cockpit shower: retractable hot and cold water shower with tap
- Anchor locker: forward, lockable, room for anchor and tackle, integrated windlass area, holder for windlass handle

## Accommodations

---

- Forward owner's cabin with central berth
- Double berth, high-density foam mattress Storage under berth
- Deep cabinet with shelves and hanging rod
- Wood hull liner
- Private forward owner's head compartment with sink, clothes hook, mirror, towel holder, toilet paper holder, wastebasket, cabinet above sink, shower sump with grate and electric drainage pump

- Aft owner's cabin with reading lights at head of berth
- Central double berth with teak trim and padded headboard, high-density foam mattress
- Deep cabinet with shelves and hanging rod
- Seating to either side of the berth with fabric cushions that match saloon fabrics
- Wooden hull liner
- Large head compartment accessible from saloon with sink, separate shower, clothes hook, mirror, towel holder, toilet paper holder, wastebasket, cabinet above sink and shower sump with grate and electric drainage pump

## Electrical

---

- 12v alternator output: 80 A
- Charge distributor/isolator
- Engine start battery capacity: 110 Ah
- Domestic battery bank capacity: 220 Ah
- Positive battery switch for engine bank, positive battery switch for domestic bank and negative general cut-off switch
- 230v shore power inlet with differential breaker
- Electrical panel with 12v breakers, 230v breakers, 12v voltmeter
- Electrical panel with 12v breakers, 230v breakers, 12v ammeter, 12v consumption meter, 12v charging meter
- One 230v and 12v plug per cabin, 230v plugs in galley, saloon and nav station

## Galley

---

- Galley with double sinks with covers and reversible cutting board, chrome plumbing fittings, storage cabinets and drawers
- L-galley to port with glass separator between galley counter and seating area
- Gimballed 2-burner stove with oven with stainless steel protection bar
- Single fridge box with freezer area, wire baskets, interior lighting comes on when door opened, 12v refrigeration and integrated compressor

## Engine Information

---

- Yanmar 4JH4E 54 HP, 39.6Kw latest generation of environmentally friendly engines
- Fully soundproofed engine compartment with engine access behind stairwell and from aft cabin
- Stainless steel propeller shaft with a fixed 3-blade bronze propeller
- Fuel/water separator



- Built-in muffler, forced air ventilation and stainless steel exhaust fitting aft
- Engine hours 940 as of Feb. 2017

## Deck

---

- Deck: Prisma Process® injected deck, ISO gelcoat surface, discontinuous balsa block coring
- Hull: solid, hand-laid fibreglass, ISO gelcoat surface, protective barrier coat
- Structure: 3rd generation inner fibreglass grid, high-load zones cut out and relaminated, drainage system through structure, special emergency repair zone in keel area

## Additional Description

---

- Bow pulpit: open, stainless steel with teak step, navigation lights and integrated wiring for lights
- Stern pulpits: stainless steel with buoy bracket
- Windlass: Quick 1000W combination rope 18mm and chain 10mm, vertical-mounted in the anchor locker, hand-held remote, manual handle
- Anchor roller: double stainless steel fitting with swivelling self-launching roller for hands-free launching and retrieving for tackle
- Lifelines: double level of stainless steel lifelines with PVC coating and stainless steel stanchions
- Toerail: teak profile with integrated chrome chocks and drainage for side deck
- Cleats: 4 x aluminium mooring cleats
- Handrails: sculpted, long stainless steel handrails on coachroof for secure movement forward
- Six person SOLAS B class liferaft, Service due 1/2020

## Исключения

---

При продаже яхты исключаются личные вещи владельца.

## Отказ от ответственности

---

Компания предоставляет описание судна или яхты добросовестно, но не может гарантировать точность этой информации, а также не ручается за техническое состояние. Покупатель должен проинструктировать своих агентов или оценщиков исследовать представленную информацию более подробно, по собственному желанию. Продажа судна или яхты, изменение цены или снятие с продажи будет происходить без предварительного уведомления.

# ФОТОГРАФИИ

**Sailing**



**Motoring**



**Starboard Aft**



**Cockpit facing aft**



**Anchor locker**



**Looking aft from the bow**



**Starboard weather deck**



**Starboard Rope Clutches and Winch**



**Port Rope Clutches and Electric Winch**



**Port Rope Clutches and Electric Winch**





**Manual Bilge Pump and Winch Handle Pocket**



**Starboard cockpit locker**



**Port cockpit locker**



**Port side helm electronics**



**Starboard side helm electronics**



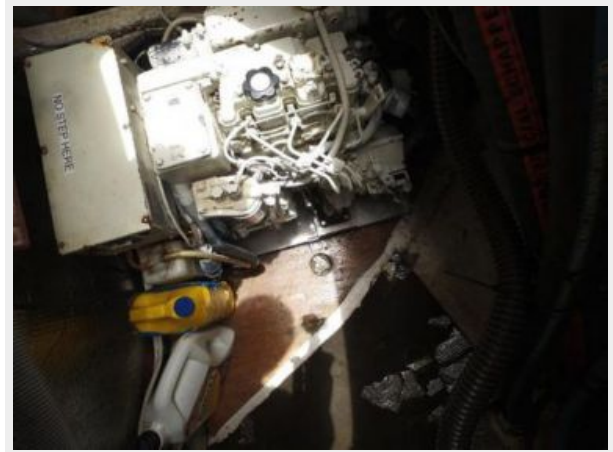
**Cockpit Shower**



**Propane Locker**



**Northern Lights Generator with 9000 hours**



**Cockpit table storage**



**Port Helm**



**Starboard Helm**



**Starboard Cockpit Seating**





**Port Cockpit seating**



**Galley**



**Galley**



**Galley A/C Control and Propane Control**



**Galley Storage**



**Galley Storage**



**Galley Storage**



**Galley Storage**



**Fridge/Freezer**



**Salon**



**Salon Table Expanded**



**Salon Table Expanded**





**Salon Table Wine Storage**



**Chart Table**



**Main Panel**



**Chart Table Storage**



**Storage above Port Setee**



**VHF, Stereo, and Storage**





**Navstation Chair**



**Looking fwd from Navstation**



**Engine Access**



**Engine Hour Meter**



**Yanmar Engine**



**Easy Access to Bilges**



### Walk Around Master



### Tons of Storage in the Walk Around Master



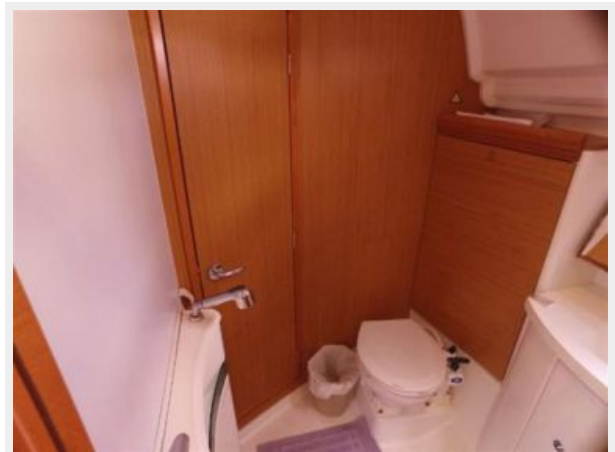
### Master Head



### Storage in Master Head



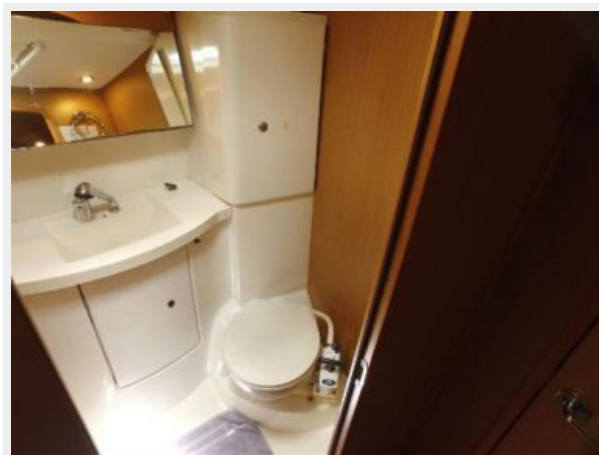
### Master Head



**Forward VIP Cabin**



**Forward VIP Head**



# КОНТАКТЫ

---

Андрей Шестаков (Andrey Shestakov) – ведущий яхтенный брокер отдела продаж яхт и судов компании Shestakov Yacht Sales Inc. Официальный представитель Shestakov Yacht Sales Inc. для русскоговорящих клиентов в центральном офисе компании в Майами/Форт Лодердейл/Флорида/США.

## Контактная информация

---

Email: [andrey@shestakovyachtsales.com](mailto:andrey@shestakovyachtsales.com)

Web: [shestakovyachtsales.com](http://shestakovyachtsales.com)

## Телефоны

---

Краснодарский край: **+7(918)465-66-44**

США, Майами, Флорида: **+1(954)274-4435**

## Время работы

---

Понедельник – Суббота: **9:00 - 21:00**  
EDT

Воскресенье: **Закрито**

## Адрес

---



Harbour Towne Marina, 850 NE 3rd St,  
STE 213, Dania, FL 33004