

III AMIGOS — MERRITT BOAT WORKS



Судостроитель:
MERRITT BOAT WORKS

Год постройки: 2013

Модель: Sport Yacht

Цена: **ЦЕНА ЯХТЫ ПО ЗАПРОСУ**

Местонахождение: United States

Длина общая: 86' 0" (26.21m)

Ширина: 21' 0" (6.40m)

Макс. осадка: 5' 8" (1.73m)

Крейс. скорость: 30 Kts. (35 MPH)

Макс. скорость: 38 Kts. (44 MPH)

Купить III AMIGOS — MERRITT BOAT WORKS а также выбрать подходящую вам яхту из нашего каталога яхт вам поможет опытный яхтенный брокер Андрей Шестаков. На сегодняшний день компания Shestakov Yacht Sales Inc. имеет большое количество яхт в собственном списке продаж, а также тесно сотрудничает со всеми крупными яхтенными производителями по всему миру.

Для того чтобы купить яхту III AMIGOS — MERRITT BOAT WORKS а также проконсультироваться по любому вопросу связанному с покупкой, продажей, чартером яхт позвоните по телефону **+7(918)465-66-44**.

ОГЛАВЛЕНИЕ

| | |
|--|----|
| ОГЛАВЛЕНИЕ | 2 |
| ХАРАКТЕРИСТИКИ | 5 |
| Обзор | 5 |
| Основная информация | 5 |
| Размеры | 5 |
| Скорость, вместимость и масса | 6 |
| Размещение | 6 |
| Корпус и палуба | 6 |
| Информация о двигателе | 6 |
| ПОДРОБНОЕ ОПИСАНИЕ | 7 |
| Walkthrough | 7 |
| Electrical Equipment | 7 |
| Air Conditioning | 8 |
| Other Machinery | 8 |
| Electronics and Navigational Equipment | 8 |
| Flybrige | 8 |
| Tower | 9 |
| Galley and Laundry Equipment | 9 |
| Deck and Hull | 9 |
| Security Equipment | 10 |
| Fire Fighting and Safety Equipment | 10 |
| Exclusions | 10 |
| Disclaimer | 10 |
| Исключения | 10 |
| Отказ от ответственности | 10 |
| ФОТОГРАФИИ | 12 |
| Cockpit | 12 |
| Cockpit | 12 |

| | |
|----------------------------------|----|
| Cockpit | 12 |
| Cockpit | 12 |
| Cockpit | 12 |
| Cockpit | 12 |
| Flybrige Forward Seating | 13 |
| Flybrige Forward Seating | 13 |
| Flybrige Helm | 13 |
| Flybrige Helm | 13 |
| Flybrige Helm | 13 |
| Helm Electronics | 13 |
| Helm Electronics | 14 |
| Helm Electronics | 14 |
| Entrance to Flybrige | 14 |
| Salon | 14 |
| Salon Aft | 14 |
| Salon Aft | 14 |
| Salon | 15 |
| Salon | 15 |
| Galley | 15 |
| Galley / Dinette | 15 |
| Galley / Dinette | 15 |
| Galley | 15 |
| Galley | 16 |
| Galley | 16 |
| Cabin Hallway & Master Stateroom | 16 |
| Master Stateroom | 16 |
| Master Stateroom | 16 |
| Master Stateroom | 16 |
| Master Stateroom | 17 |

| | |
|-----------------------|----|
| Master Head | 17 |
| Master Head | 17 |
| Guest Stateroom | 17 |
| Guest Stateroom | 17 |
| Guest Stateroom | 17 |
| Guest Head | 18 |
| VIP Stateroom | 18 |
| VIP Stateroom | 18 |
| VIP Stateroom | 18 |
| VIP Head | 18 |
| VIP Head | 18 |
| Crew Cabin | 19 |
| Crew Head | 19 |
| Engine Room | 19 |
| Engine Room | 19 |
| Engine Room | 19 |
| Engine Room | 19 |
| Arial View | 20 |
| Aerial View | 20 |
| Aerial View | 20 |
| Aerial View | 20 |
| КОНТАКТЫ | 21 |
| Контактная информация | 21 |
| Телефоны | 21 |
| Время работы | 21 |
| Адрес | 21 |

ХАРАКТЕРИСТИКИ

Обзор

III AMIGOS is the ultimate in sportfishing yachts. The yacht was built by a very experienced yachtsman who wanted a quality and pedigreed sportfish. **III AMIGOS** is in stunning condition with 3150 hours on the mains and has fished Florida to Costa Rica with great success. **III AMIGOS** is the only Open Bridge 86' on the market!

Highlights:

- Pedigreed Custom Sportfish
- Immaculate condition
- Stunning interior by Patrick Knowles Design
- Jack Hopewell tower
- Tournament rigged
- Mezzanine with A/C
- Bluewater chair with rocket launchers

Range:

- Cruising Range: 600 nmi at 30 kn; 1700 nmi at 9 kn.

Основная информация

| | |
|------------------------------------|---|
| Тип судна: Sport Yacht | Подкатегория: Катер для спортивной рыбалки |
| Модельный год: 2013 | Год постройки: 2013 |
| Страна: United States | Верх: Full / Tuna Tower |
| Открытая палуба мостика: Да | Кубрик: Да |

Размеры

| | |
|-------------------------------------|-------------------------------|
| Длина общая: 86' 0" (26.21m) | Ширина: 21' 0" (6.40m) |
| Макс. осадка: 5' 8" (1.73m) | |

Скорость, вместимость и масса

Крейс. скорость: 30 Kts. (35 MPH)

Дальность на крейсерской скорости:
2050

Макс. скорость: 38 Kts. (44 MPH)

Дальность на макс. скорости: 2450 Kts.

Водоизмещение: 150000 Pounds

Вместимость воды: 500 Gallons

Вместимость сточного бака: 185 Gallons **Объем топливного бака:** 3800 Gallons

Размещение

Всего кают: 3

Спальные места: 6

Всего ком. состава: 3

Каюты экипажа: 1

Койки экипажа: 2

Спальных мест экипажа: 2

Комм. состав экипажа: 1

Корпус и палуба

Материал корпуса: Fiberglass

Дизайнер интерьера: Patrick Knowles
Design

Информация о двигателе

Двигатели: 2

Производитель: MTU

Модель: M94

Тип двигателя: Inboard

Тип топлива: Diesel

ПОДРОБНОЕ ОПИСАНИЕ

Walkthrough

Entering the yacht from a spacious cockpit, you step up to an air conditioned mezzanine with comfortable seating for four and a drinks fridge.

Entering the saloon through an electrical door, to starboard is a wrap around sofa with built in tackle storage, and a large 65" TV to port. There are two comfortable club chairs to port. Forward is an open galley with three crocodile-covered bar stools. To starboard is a dinette for four with a wine cooler. Rod storage is in the hallway.

Going into the accommodations, the huge master is to port with a walk around queen bed and an elegant marble ensuite. The VIP is forward of the master and has light louvered joinery work with another walk around bed and an onyx ensuite and shower. To starboard is the day head which is shared ensuite by the third guest cabin with bunk beds. Aft on the starboard side is the entry to a full-beam spacious crew cabin with access to the pump room and the immaculate and well laid out engine room.

Comfortable custom stainless steel spiral stairs lead up to the well appointed flybridge with two Bluewater helm chairs, and all electronics behind sliding Perspex doors which makes the flybridge appear very clean and tidy. All engine gauges, generator on/off lights and radios are hidden behind lift-up varnished hatches. The Bridge also includes a concealed induction cooktop on the port side. Forward of the helm station is a lovely varnished area with ample seating for ten with a bar fridge and dining table. The Hopewell tower has full controls.

Recent upgrades include new teak decks, Northern Lights Generators, Bridge Enclosure and Cushions, SIMRAD Electronics, and Seatronics Monitors.

Electrical Equipment

- Output: 38 kW
- Generators: Northern Lights (New Oct 2019 / 300 Hours)
- Gen Fuel Consumption: 3 gph
- Shore Power: 2 x 100 amp, single phase, 240 Volts 60 hz

Batteries

- Main Engines: 2 Odyssey
- Generator Starting: Odyssey
- General Service: Odyssey
- Emergency: Odyssey

Air Conditioning

- Type: Chilled Water A/C

Other Machinery

- Watermaker: Water Makers Inc. 1950 gpd
- Bow Thruster: Side Power
- Steering System: Jastrom
- Fuel Separator: 3 Racors
- Filtration: 3 Racors
- Fresh Water System: 3 Headhunter Mach 5 (New Nov 2019 and June 2020)
- Bilge Water System: Rule Pumps

Electronics and Navigational Equipment

- SatComs: KVH Fleet broadband 150 plus Trac phone; Trac phone V7IP 24" broadband system
- Ship's Printer: HP 6520
- Satellite TV System: Trac Vision HD 7
- Video Equipment: Savant Remote Multi System
- TVs: Samsung
- Audio Equipment: Marantz/Denon
- DVDs: Samsung
- Stereos: 1 Sirius SAT Radios
- iPod Station: 1

Flybrige

- Radar #1: Simrad 25 kW w/ARPA 96 nmi
- Radar #2: Simrad 10 kW w/ARPA 72 nmi
- Autopilot: Simrad
- GPS #1: Simrad (New Oct 2018)
- GPS #2: Garmin
- Plotter Software: Nobel Tec
- Depth & Video Sounder: Simrad 3 kW/Garmin 1 kW
- Night Vision: FLIR Gyro stabilized
- Compasses: Simrad Gyrocompass; Ritchie Magnetic compass
- Telephone System: Iridium Sailor
- VHF Fixed: 2 Standard Horizon
- Monitors: Seatronics: 3 bridge, 1 tower (New Oct 2018)

* DirectTV and Sirius radio available on bridge** Bow thruster controls on bridge

Tower

- Radar #1: Simrad 25 kW w/ARPA 96 nmi
- Radar #2: Simrad 10 kW w/ARPA 72 nmi
- Autopilot: Simrad
- GPS #1: Simrad
- GPS #2: Garmin
- Depth & Video Sounder: Simrad 3 kW / Garmin 1 kW
- Compass: Simrad Gyrocompass
- VHF Fixed: 1 Standard Horizon
- Teaser Reels: 2 Miya Epoch 9's

* Bow thruster controls on tower

Galley and Laundry Equipment

Main Galley Equipment

- Range: Schott Ceran
- Oven: Bosch
- Microwave: Sharp
- Refrigeration: Sub-Zero
- Freezer: Sub-Zero
- Ice maker(s): Hoshizaki
- Wine Cooler(s): Viking
- Dishwasher: Miele
- Coffee Maker: Krups (built-in)

Laundry Equipment

- Main Laundry Washer: Whirlpool Stackable

Deck and Hull

- Anchor Windlass System: Muir
- Anchors: Custom Stainless Steel 110 lb
- Anchor Chain & Rode: 75' and 300', 1" x 3-strand
- Underwater Lights: 6 Ocean LED

Security Equipment

- CCTV System: IRIS
- Cameras: 7 Orlaco
- Ship Safes: 5 Lockstate

Fire Fighting and Safety Equipment

Fire Fighting Equipment - Recertified October 2019

- Smoke Detector: 1 in main salon
- Fixed FM System: 1 Halon 1301 Fixed bottles
- Portable CO2: 9

Safety Equipment - Recertified October 2019

- Life Rafts: 2 Revere Elite 8-person inflatable
- 24" Datrex Life Ring
- 30" Jim Buoy
- EPRIBs: 2 ACR Global Fix Pro
- Flares: 2 Orion Portable Flare Kits
- Medical Kit: 1 custom bag

Exclusions

- Owner's personal items

Disclaimer

The Company offers the details of this vessel in good faith but cannot guarantee or warrant the accuracy of this information nor warrant the condition of the vessel. A buyer should instruct his agents, or his surveyors, to investigate such details as the buyer desires validated. This vessel is offered subject to prior sale, price change, or withdrawal without notice.

Исключения

При продаже яхты исключаются личные вещи владельца.

Отказ от ответственности

Компания предоставляет описание судна или яхты добросовестно, но не может

гарантировать точность этой информации, а также не ручается за техническое состояние. Покупатель должен проинструктировать своих агентов или оценщиков исследовать представленную информацию более подробно, по собственному желанию. Продажа судна или яхты, изменение цены или снятие с продажи будет происходить без предварительного уведомления.

ФОТОГРАФИИ

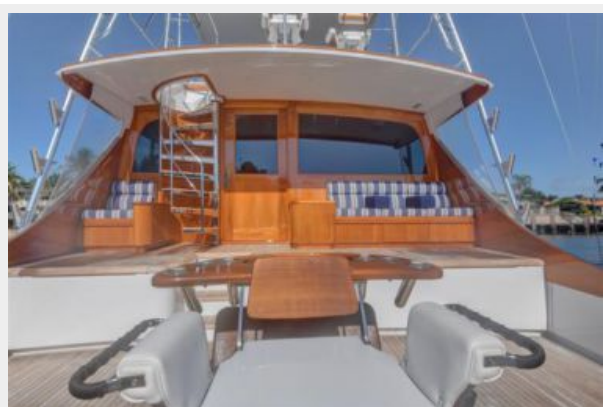
Сockpit



Сockpit



Сockpit



Сockpit



Сockpit



Сockpit



Flybrige Forward Seating



Flybrige Forward Seating



Flybrige Helm



Flybrige Helm



Flybrige Helm



Helm Electronics



Helm Electronics



Helm Electronics



Entrance to Flybrige



Salon



Salon Aft



Salon Aft



Salon



Salon



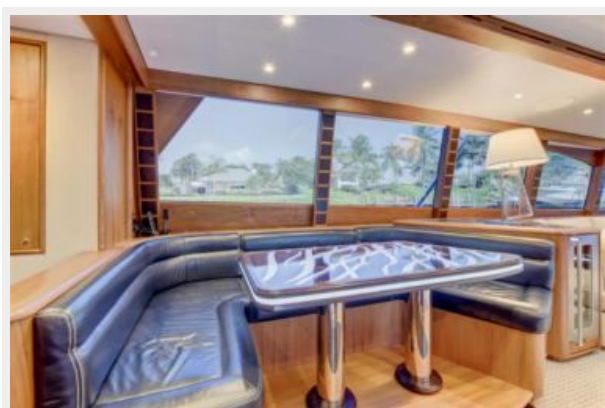
Galley



Galley / Dinette



Galley / Dinette



Galley



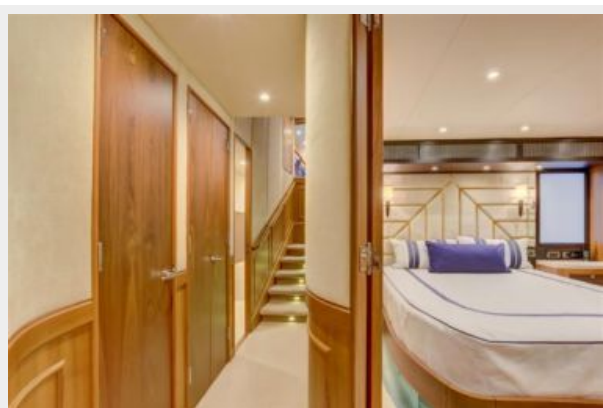
Galley



Galley



Cabin Hallway & Master Stateroom



Master Stateroom



Master Stateroom



Master Stateroom



Master Stateroom



Master Head



Master Head



Guest Stateroom



Guest Stateroom



Guest Stateroom



Guest Head



VIP Stateroom



VIP Stateroom



VIP Stateroom



VIP Head



VIP Head



Crew Cabin



Crew Head



Engine Room



Engine Room



Engine Room



Engine Room



Arial View



Aerial View



Aerial View



Aerial View



КОНТАКТЫ

Андрей Шестаков (Andrey Shestakov) – ведущий яхтенный брокер отдела продаж яхт и судов компании Shestakov Yacht Sales Inc. Официальный представитель Shestakov Yacht Sales Inc. для русскоговорящих клиентов в центральном офисе компании в Майами/Форт Лодердейл/Флорида/США.

Контактная информация

Email: andrey@shestakovyachtsales.com

Web: shestakovyachtsales.com

Телефоны

Краснодарский край: **+7(918)465-66-44**

США, Майами, Флорида: **+1(954)274-4435**

Время работы

Понедельник – Суббота: **9:00 - 21:00**
EDT

Воскресенье: **Закрето**

Адрес



Harbour Towne Marina, 850 NE 3rd St,
STE 213, Dania, FL 33004