

RP110-804 — HORIZON



Builder: HORIZON

Year Built: 2017

Model: Mega Yacht

Price: PRICE ON APPLICATION

Location: United States

LOA: 110' 0" (33.53m)

Beam: 25' 0" (7.62m)

Max Draft: 5' 8" (1.73m)

Our experienced yacht broker, Andrey Shestakov, will help you choose and buy a yacht that best suits your needs **RP110-804 — HORIZON** from our catalogue. Presently, at Shestakov Yacht Sales Inc., we have a wide variety of yachts available on our sale's list. We also work in close contact with all the big yacht manufacturers from all over the world.

If you would like to buy a yacht **RP110-804 — HORIZON** or would like help answering any questions concerning purchasing, selling or chartering a yacht, please call **+1(954)274-4435**

TABLE OF CONTENTS

TABLE OF CONTENTS	2
SPECIFICATIONS	5
Overview	5
Basic Information	5
Dimensions	5
Speed, Capacities and Weight	6
Accommodations	6
Hull and Deck Information	6
Engine Information	6
DETAILED INFORMATION	7
Accommodations	7
Forward and Aft Decks	7
Flybridge and Boat Deck	8
Pilothouse	9
Electronics	9
Interior Design and Equipment	9
Salon and Dining Room	10
Galley	10
Master Stateroom	10
VIP Staterooms (2)	11
Twin Guest Staterooms (2)	11
Crew Quarters	11
Crew Mess	11
Captains Cabin	11
Crew Cabins (2)	12
Tender Garage/Utility Room	12
Mechanical Systems	12
ER and Propulsion Details	13

Electrical System	13
Additional Notes	14
Disclaimer	14
Exclusions	14
Disclaimer	15
PHOTOS	16
Exterior II	16
Exterior III	16
Exterior IV	16
Exterior V	16
Exterior VII	17
Exterior VI	17
Exterior IX	17
Exterior VIII	17
General Layout	18
Aft Deck	18
Flybridge	18
Flybridge Bar/Seating	18
Flybridge	18
Flybridge Seating	18
Flybridge	19
Pilothouse	19
Salon	19
Salon	19
Salon	19
Salon	19
Salon	20
Formal Dining	20
Formal Dining	20

Formal Dining	20
Formal Dining	20
Galley	20
Galley	21
Master Stateroom	21
Master Stateroom	21
Master Stateroom	21
Master Stateroom	21
Master Head	21
Guest Stairwell	22
Starboard VIP	22
Starboard VIP	22
Port VIP	22
Port VIP	22
Starboard Twin	22
Starboard Twin	23
Port Twin	23
Crew Captain's Quarters	23
Crew Mess	23
Utility Room	23
Tender Garage	23
CONTACTS	24
Contact details	24
Telephones	24
Office hours	24
Address	24

SPECIFICATIONS

Overview

Built to the highest standards of design, performance and quality, this new Horizon RP110 raised pilothouse motoryacht is a showcase of superyacht design and amenities. Elements of the ocean blend into a contemporary design, giving the interior a relaxed yet sophisticated, modern beach house feel. Within a 25' beam, she offers five voluminous en suite staterooms, including an on-deck Master, plus private crew quarters in the bow. When it's time to enjoy the outdoors, the RP110 features a hydraulic tender garage with a Hi/Lo swim platform that serves as a flexible beach club space as well as an expansive open flybridge for entertaining guests al fresco.

Featuring exterior design by JC Espinosa, the Horizon RP110 superyacht exudes sophistication in design and style; her large, sweeping windows provide unobstructed views that, in combination with her fluid style lines, creates a sleek and modern profile. The double chine hull design from naval architect Donald Blount ensures excellent sea keeping, with stability and enhanced hydrodynamics to minimize drag and improve overall performance. With the RP110, you will cruise in the utmost comfort and luxury.

Basic Information

Category: Mega Yacht

Model Year: 2018

Year Built: 2017

Country: United States

Vessel Top: Raised Pilothouse

Fly Bridge: Yes

Dimensions

LOA: 110' 0" (33.53m)

LWL: 89' 9" (27.36m)

Beam: 25' 0" (7.62m)

Max Draft: 5' 8" (1.73m)

Clearance: 34' 8" (10.57m)

Speed, Capacities and Weight

Displacement: 256610 Pounds

Water Capacity: 800 Gallons

Holding Tank: 250 Gallons

Fuel Capacity: 5550 Gallons

Accommodations

Total Cabins: 5

Sleeps: 10

Total Heads: 9

Captain Cabin: True

Crew Cabin: 3

Crew Berths: 6

Crew Heads: 3

Hull and Deck Information

Hull Material: FRP

Hull Configuration: Semi-Displacement

Exterior Designer: JC Espinosa

Engine Information

Engines: 2

Manufacturer: Caterpillar

Model: C32A

Engine Type: Inboard

Fuel Type: Diesel

DETAILED INFORMATION

Accommodations

Built to the highest standards of design, performance and quality, this new Horizon RP110 raised pilothouse motoryacht is a showcase of superyacht design and amenities. Elements of the ocean blend into a contemporary design, giving the interior a relaxed yet sophisticated, modern beach house feel. Within a 25' beam, she offers five voluminous en suite staterooms, including an on-deck Master, plus private crew quarters in the bow. When it's time to enjoy the outdoors, the RP110 features a hydraulic tender garage with a Hi/Lo swim platform that serves as a flexible beach club space as well as an expansive open flybridge for entertaining guests al fresco.

Featuring exterior design by JC Espinosa, the Horizon RP110 superyacht exudes sophistication in design and style; her large, sweeping windows provide unobstructed views that, in combination with her fluid style lines, creates a sleek and modern profile. The double chine hull design from naval architect Donald Blount ensures excellent sea keeping, with stability and enhanced hydrodynamics to minimize drag and improve overall performance. With the RP110, you will cruise in the utmost comfort and luxury.

Forward and Aft Decks

- High bulwark w/flush mounted courtesy lights
- Fiberglass rub rail w/ S/S cap along hull side & swim platform
- Heavy-duty S/S 2" handrail w/ 1 1/4" stanchions
- Prewired for LED boat name on stern & 2 sides
- Nonskid main deck walkways & teak foredeck
- Large U-shaped settee w/ Hi/Lo table & foredeck sunbathing cushions
- Bimini top for settee forward
- Bow teak step with cushion for additional seating
- (2) Fusion speakers fwd area
- (2) Maxwell VWC4500 hydraulic windlasses w/local foot switches & remote (hidden design)
- (2) Maxwell electric rope capstan on foredeck
- (2) 110kg S/S anchors w/ S/S protection plate
- 300' High tensile 1/2" anchor chains (2) w/chain stopper & tensioner
- Extra chain counter
- Freshwater/sea water anchor chain manual washdown system
- Heavy-duty 316 S/S cleats and fairlead w/rollers on fwd & aft deck
- 9-step boarding ladder & (2) sets of mounts for both sides w/step across
- (4) Bulwark doors at midship & aft deck for boarding
- Deckhouse entrance doors (2) at galley and foyer
- CE approved S/S portholes w/ storm covers for portlights

- Frameless windows, clear tempered laminated Low-E glass for windshield & side windows
- Teak aft deck, teak swim platform & teak steps to swim platform
- Aft deck FRP settee w/Hi-Lo teak dining table & center leaf
- (3) Aft deck teak chairs
- Aft deck mini bar w/ sink & fridge
- Samsung 32" LED TV motorized flip down TV lift
- (4) Fusion speakers aft deck
- (2) Maxwell VC3500 electric rope winches w/rope roller on aft deck
- Hawser holes on transom port & starboard sides
- Besenzoni Pi383 6.5m hydraulic passerelle
- Watertight door at the entrance to the utility room/garage from the swim platform
- **Tender Garage w/hydraulic garage door & Bensenzoni G433 crane**
- **Interior garage w/ work bench, fridge & dayhead**
- **Williams 445 tender**
- Hydraulic hi-lo swim platform w/1500lb capacity
- Built-in shower with hot/cold water above swim platform
- Besenzoni SI401 hydraulic swim ladder
- 2" Removable S/S rails around swim platform at stern

Flybridge and Boat Deck

- Teak on entire flybridge deck
- Air conditioning on flybridge, 24 BTU (2 units)
- Dimmer lights (3) sets
- S/S rails with grooving in lower track for EZ2CY
- Oversize drains w/strainers on each deck corner w/internal overboard drains, all w/check valves ventholes
- Retractable ladder for hardtop
- Radar arch w/antenna bracket, (2) search lights on either side & upgraded Buell triple air horn
- (2) Flood lights illuminating boat deck (flush mounted in hard top) & (2) flood lights illuminating radar arch/mast
- Custom helm station w/ZF Mather controls, compass & steering wheel
- Samsung 32" LED TV w/ motorized flip down lift
- (4) Fusion speakers
- Custom bar w/ Corian countertops, sink, icemaker, fridge & storage
- Footrest around bar & (4) round stools for bar counter
- U-shaped settee w/ two dinette tables & storage cabinet aft per layout
- (5) Persons Jacuzzi with lights & heater
- Additional shower head near Jacuzzi
- Custom cabinet w/ 24" propane BBQ & storage
- Removable hand rails around boat deck
- FRP cover with sunpad above flybridge Jacuzzi

- (2) Life rafts
- Hydraulic Steelhead ES1500 davit

Pilothouse

- Integrated instrument panel on helm station w/ carbon fiber dashboard panel
- Integrated general alarm & monitoring system for important equipment (bilge pumps, blowers, nav lights)
- International LED navigation lights
- Ritchie magnetic compass for pilothouse & FB stations
- Heavy-duty Speich S/S wipers & washer system, w/variable speed control
- L-shaped leather settee w/ Hi-Lo table
- Chart drawer
- Surveillance camera for aft deck & ER
- Electric Besenzoni helmchair
- AV Package: (2) Fusion Speakers, Fusion stereo & Boss amplifier

Electronics

- Custom Garmin navigation system, includes:
- (4) Garmin GPSMAP 24" multifunction displays in PH
- (2) Garmin GPSMAP displays on flybridge helm
- Garmin GMR 1224 HD2 4' and 6' open array radars
- Garmin NMEA 2000 GPS
- Garmin fish finder and transducer
- Garmin GHP autopilot system
- Garmin GXM52 weather receiver
- Airmar wind/depth/speed/temp transducers
- Garmin VHF 300 + GHS 10 with second station mic and built-in loudhailer
- Garmin AIS600

Interior Design and Equipment

- Five en suite guest staterooms: on-deck Master with four guest staterooms below deck + crew quarters in the bow
- Customized interior design package
- Semi-gloss Mahogany main wood w/ Santos Rose gloss accents
- Oak wood in crew quarters
- Marble counter top, backsplash & floors in Master & guest heads
- Extra stacked washer/dryer in lower guest companionway
- Storage area under pilothouse (off companionway)

Salon and Dining Room

- Trend S/S curved salon entrance door
- Custom marble entrance floor in salon
- Wood flooring through salon & dining
- Dayhead on stbd side
- Custom-designed bar w/ marble top, storage, wine cooler & icemaker
- L-shaped sofa with custom coffee table, chair & stools
- Storage & TV cabinets per layout
- Electric blinds in salon
- AV Package: Hi/Lo Samsung 55" LED TV, Samsung Blu-Ray player, Apple TV & Bose Lifestyle home theater w/speakers
- Custom dining table w/ leaf + chairs for 10
- Swarovski crystal light fixture above table
- Custom sculpted marble wall
- Storage cabinets to port & stbd
- Sliding privacy doors to galley and companionway

Galley

- Cambria galley counter top and floors
- Cabinets & overhead storage lockers per layout
- SubZero side-by-side fridge & freezer
- SubZero freezer drawer
- Gaggenau range and oven
- Gaggenau dishwasher
- Double S/S sink per layout
- Kitchenaid trash compactor
- Kitchenaid garbage disposal
- Glass/dish/plate holders
- Full set of tableware + cookware for 10 guests

Master Stateroom

- King size bed
- En suite head with dual sinks, shower & water closet
- Walk-in closet at entry
- Port vanity w/stool and storage
- AV Package: Samsung 48" LED TV, Bose Lifestyle home theater w/ iPod dock & speakers, Samsung Blu-Ray player, Apple TV
- TV cabinet w/ storage
- Electric blinds for windows

VIP Staterooms (2)

- Mirrored layout for both rooms
- Queen size bed
- En suite head w/shower, sink & water closet
- Full-height hanging locker
- Desk area w/stool
- AV Package: Samsung 40" LCD TV, Bose Lifestyle home theater w/iPod dock & speakers, Samsung Blu-Ray player, Apple TV

Twin Guest Staterooms (2)

- (2) Single twin beds in each cabin
- Pullman design & sliding twin bed in stbd cabin
- Pullman design in port cabin
- Hanging locker on outboard side
- En suite head w/shower, sink & toilet
- AV Package: Samsung 32" LED TV, (2) Fusion speakers, Fusion stereo

Crew Quarters

- Captain's cabin w/ bed & hanging lockers; en suite head w/shower and sink
- (2) Twin bunk rooms w/hanging locker
- (2) Heads with sinks, showers and toilets
- Stacked washer/dryer

Crew Mess

- L-shaped dinette w/ hi/lo folding table
- Fridge/freezer, microwave, 2 burner cooktop & trash compressor
- Stacked washer/dryer
- AV Package: Samsung 32" LED TV, (2) Fusion speakers, Fusion stereo

Captains Cabin

- Queen bed, locker, en suite head per layout
- AV Package: Samsung 24" LED TV, (2) Fusion speakers, Fusion stereo

Crew Cabins (2)

- One set of bunks per cabin w/ hanging locker
- En suite head
- AV Package: (2) Fusion speakers, Fusion stereo

Tender Garage/Utility Room

- S/S working counter top w/fridge
- Single deep S/S sink w/faucet
- Storage lockers per layout
- Dayhead per layout with sink

Mechanical Systems

- Reverso Nauafp S210S32 fuel polishing system
- Dive compressor Bauer Junior II
- Emergency shut-off fuel valve w/remote control
- ISO grade fuel hose through entire system
- Dual Racor 79/1000MA fuel filters/water separator for each engine
- (2) Racor 500MA fuel filters, one on each generator
- Electric fuel transfer pump + one manual emergency spare pump
- Oil change pump system for engines & gens
- Marine grade fuel tanks, total 6,150 gal in ER w/ sight gauge & fiberglass tank under bilge
- Electric rule bilge pump w/ float switch & high level alarm in each watertight compartment
- Manual bilge pumps in ER & forward stateroom
- FRP water tanks, total 800 gal w/electric level gauge
- (3) Torrid 30 gallon water heaters w/circulation pump system
- High-volume AC fresh water pressure pump & (1) DC pump for back up
- Sea Recovery water maker 1400 gal/day w/fresh flush function & remote control panel
- (3) Charcoal filters plumbed into fresh water line - fresh water pump, shore water inlet & galley
- Marine Air chilled water, central AC compressor units w/soft start & reversible cycle heat function; air handler units w/individual controllers throughout boat
- Back up sea water cooling pump & back up air conditioning circulation pump
- 250 Gallon holding tanks w/Y-Valve for holding tanks dockside pump out (black & grey water)
- Hamann sanitary waste treatment system
- Tecma Silence Plus toilet system
- Seafire E/R firefighting system
- Fire pump w/outlets and hydrants
- Fire insulation in engine room

- Fire resistant treatment for pipe penetrations
- Kidde fire extinguishers
- Automatic shutdown system
- Integrated fire alarm system in pilothouse w/detectors in each cabin

ER and Propulsion Details

- Twin CAT C32A 1900 HP diesel engines w/reduction gears
- Live SAE-C PTO on gear boxes for thrusters/windlass & stabilizer power
- SAE-A PTO on engines for hydraulic steering gear
- ZF Mathers fixed engine control system in PH & FB - (1) handheld remote control plug-in receptacles on aft deck & FB
- SS Aquamet HS 22# shafts
- Spur line cutters for shafts
- TIDES Marine seals for shafts
- Spare rudder seals on the rudder shafts
- High performance S-Class (5) blade propellers in NiA1Br
- Main bronze struts w/backing plates
- Underwater exhaust system for engines w/ bypass mufflers
- S/S rudder w/zinc plates
- ABT hydraulic 16" variable speed bow & stern thrusters, 55HP
- ABT Zero speed stabilizers 370/16x
- Reversible AC intake blowers (2) w/automatic speed control
- Engine room ventilation openings (4) w/Delta-T moisture eliminators
- Double sound & heat insulated material w/foam & lead combination
- Heavy-duty watertight engine room door; watertight bulkheads fwd & aft
- Full-length S/S overhead grab rail on each side of engine
- Air compressor
- Central vacuum cleaner system w/outlets throughout

Electrical System

- AC Electrical system: 208V/120V 3 phase, 60Hz
- (2) Kohler generators 55kW 60 Hz w/sound shield
- (4) 255Ah Starting batteries for main engines & gens
- (10) 210Ah AGM batteries for ship's DC 24V service power
- (2) 210Ah emergency batteries above main deck w/independent battery charger
- Vapor proof battery switch
- Charles battery chargers for engine start & service
- Outback inverter power
- Electrolysis bonding & grounding system
- Atlas 75KVA shore power frequency converter w/seamless transfer

- (2) 100 amp shorepower cablemasters w/ 75' power cable
- (2) Shorepower receptacles, 100 amp
- Shorepower connection w/total 65KVA isolation transformer
- Octoplex power management w/ Maretron monitoring system (incl. Maretron N2KView)
- Emergency power package & lighting system
- GFI protection for all outlets in exterior, heads, galley & ER
- Independent 24 volt to 12 volt converters for necessary equipment
- Subpanel design in each zone for electrical distribution
- DC12 Volt receptacle
- Zinc anodes on transom
- (10) Underwater lights
- Stern docking lights
- Pre-wire for towing lights (one at stern & one at masthead light)
- SAT TV KVH TracVision, HD7 and M9 dome
- Wave WiFi booster system w/wireless routers onboard
- Apple airport express routers
- Panasonic PBX telephones w/intercom features in salon, pilothouse, master, VIP, guest rooms & crew mess; remaining cabins w telephone outlet

Additional Notes

- White gelcoat finish for hull above water line, exterior decks and furniture
- One piece hull cored lamination w/deep skeg and longitudinal girders
- Hull, deck & superstructure built using VARTM for improved strength & less weight
- High density foam cored hull bottom
- High density foam cored hull sides, decks & superstructure
- Stringers with high density foam coring
- Interior structural components all properly bonded to hull
- Strong collision bulkhead structure for extra safety
- International anti-fouling bottom paint w/anti-osmosis treatment

Disclaimer

The Company offers the details of this vessel in good faith but cannot guarantee or warrant the accuracy of this information nor warrant the condition of the vessel. A buyer should instruct his agents, or his surveyors, to investigate such details as the buyer desires validated. This vessel is offered subject to prior sale, price change, or withdrawal without notice.

Exclusions

Owner's personal belongings.

Disclaimer

The Company offers the details of this vessel or yacht in good faith but cannot guarantee or warrant the accuracy of this information nor warrant the condition of the vessel. A buyer should instruct his representatives, agents, or his surveyors, to investigate such details as the buyer desires validated. This vessel or yacht is offered subject to prior sale, price change, or withdrawal without notice.

PHOTOS

Exterior II



Exterior III



Exterior IV



Exterior V



Exterior VI



Exterior VII



Exterior VIII



Exterior IX



General Layout



Aft Deck



Flybridge



Flybridge Bar/Seating



Flybridge



Flybridge Seating



Flybridge



Pilothouse



Salon



Salon



Salon



Salon



Salon



Formal Dining



Formal Dining



Formal Dining



Formal Dining



Galley



Galley



Master Stateroom



Master Stateroom



Master Stateroom



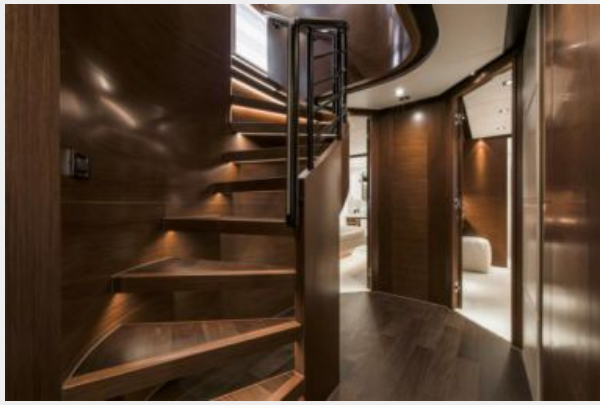
Master Stateroom



Master Head



Guest Stairwell



Starboard VIP



Starboard VIP



Port VIP



Port VIP



Starboard Twin



Starboard Twin



Port Twin



Crew Captain's Quarters



Crew Mess



Utility Room



Tender Garage



CONTACTS

Andrey Shestakov, leading yacht broker of the sales department of Shestakov Yacht Sales Inc. Shestakov Yacht Sales Inc., the official representative of the Miami/Fort Lauderdale FL headquarters.

Contact details

Email: andrey@shestakovyachtsales.com

Web: shestakovyachtsales.com/en/

Telephones

USA: +1(954)274-4435

Office hours

Monday – Saturday: **9:00 - 21:00** EDT

Sunday: **closed**

Address



Harbour Towne Marina, 850 NE 3rd St,
STE 213, Dania, FL 33004