

ENDEAVOR — CABO



Судостроитель: CABO

Год постройки: 2001

Модель: Катер для спортивной рыбалки

Цена: ЦЕНА ЯХТЫ ПО ЗАПРОСУ

Местонахождение: United States

Длина общая: 31' 0" (9.45m)

Ширина: 12' 5" (3.78m)

Макс. осадка: 3' 2" (0.97m)

Купить **ENDEAVOR — CABO** а также выбрать подходящую вам яхту из нашего каталога яхт вам поможет опытный яхтенный брокер Андрей Шестаков. На сегодняшний день компания **Shestakov Yacht Sales Inc.** имеет большое количество яхт в собственном списке продаж, а также тесно сотрудничает со всеми крупными яхтенными производителями по всему миру.

Для того чтобы купить яхту **ENDEAVOR — CABO** а также проконсультироваться по любому вопросу связанному с покупкой, продажей, чартером яхт позвоните по телефону **+7(918)465-66-44**.

ОГЛАВЛЕНИЕ

ОГЛАВЛЕНИЕ	2
ХАРАКТЕРИСТИКИ	5
Обзор	5
Основная информация	5
Размеры	5
Скорость, вместимость и масса	5
Размещение	5
Корпус и палуба	6
Информация о двигателе	6
ПОДРОБНОЕ ОПИСАНИЕ	7
Accommodations	7
Master Stateroom, Forward	7
Salon	7
Head	7
Galley, Below Deck, Forward Port	8
Helm / Electronics and Navigation	8
Deck	8
Engine and Mechanical Equipment	9
Electrical System / Equipment	9
Cockpit / Fishing Equipment	10
Additional Features / Equipment	10
Exclusions	10
Salesman's Comments	10
Исключения	10
Отказ от ответственности	10
ФОТОГРАФИИ	11
Profile 2	11
Profile 3	11

Master Stateroom 1	11
Master Stateroom 2 - Forward Berth	11
Master Stateroom 3 - Storage	11
Salon 1 - Dinette	11
Salon 3	12
Salon 2 - Dinette	12
Salon 4 - TV	12
Salon 5 - Stereo System	12
Head 1	13
Head 2	13
Galley 1	13
Galley 2	13
Helm / Electronics & Navigation 1	14
Helm / Electronics & Navigation 2	14
Helm / Electronics & Navigation 4 - Tach, Flow Scan & Hour Meter	14
Helm / Electronics & Navigation 3	14
Helm / Electronics & Navigation 5 - Radio Box	14
Helm / Electronics & Navigation 6 - Chart Table	14
Helm / Electronics & Navigation 7 - Tower Helm	15
Helm / Electronics & Navigation 8 - Tower Network Monitor	15
Deck 1 - Tower	15
Helm / Electronics & Navigation 9 - Tower VHF	15
Deck 2 - View From Tower	16
Deck 3 - EPIRB	16
Deck 5 - Helm Seat & Ice Maker	16
Deck 4 - Helm & Jump Seat	16
Deck 6 - Companion Seat	16
Deck 7 - Port Helm Seating	16
Deck 8 - Port Helm Seat	17

Deck 9 - Starboard Helm Seating & Storage	17
Deck 10 - Center Windshield Vent	17
Engine & Mechanical Equipment 1	17
Engine & Mechanical Equipment 3 - Port Engine	18
Engine & Mechanical Equipment 2 - Port Engine	18
Engine & Mechanical Equipment 5 - Starboard Engine	18
Engine & Mechanical Equipment 4 - Starboard Engine	18
Engine & Mechanical Equipment 6	19
Electrical System / Equipment 1 - Electrical Panel	19
Cockpit / Fishing Equipment 1 - Tackle Storage	19
Electrical System / Equipment 2 - Generator	19
Cockpit / Fishing Equipment 2 - Rocket Launcher	19
Cockpit / Fishing Equipment 3 - Rocket Launcher	19
Cockpit / Fishing Equipment 4 - Cockpit	20
Cockpit / Fishing Equipment 5 - Fish Box	20
КОНТАКТЫ	21
Контактная информация	21
Телефоны	21
Время работы	21
Адрес	21

ХАРАКТЕРИСТИКИ

Обзор

Check out this very well maintained 31 Cabo! Her knowledgeable owner keeps her updated and looking good! OWNER HAS ALREADY CHOSEN HIS NEW BOAT! MAKE OFFERS!!!

Основная информация

Тип судна: Катер для спортивной рыбалки

Подкатегория: Express

Модельный год: 2001

Год постройки: 2001

Страна: United States

Верх: Hardtop W/Tower

Кубрик: Да

Размеры

Длина общая: 31' 0" (9.45m)

Ширина: 12' 5" (3.78m)

Макс. осадка: 3' 2" (0.97m)

Скорость, вместимость и масса

Водоизмещение: 15000 Pounds

Вместимость воды: 50 Gallons

Объем топливного бака: 350 Gallons

Размещение

Всего кают: 1

Всего коек: 4

Спальные места: 4

Всего ком. состава: 1

Корпус и палуба

Материал корпуса: Fiberglass

Материал палубы: Fiberglass

Комплектация корпуса: Modified V-Hull

Цвет корпуса: White

Информация о двигателе

Двигатели: 2

Производитель: CAT

Модель: 3126

Тип двигателя: Inboard

Тип топлива: Diesel

ПОДРОБНОЕ ОПИСАНИЕ

Accommodations

Sleeps two owners and guests in Master Stateroom forward plus convertible settee sleeps two for a total of four berths. One Head with shower. Enter the Cabin from Centerline of the Helm Deck to find the L-shaped convertible settee to starboard. The full Galley is to port with the Head just aft of the Galley. The Master Stateroom is forward.

Master Stateroom, Forward

- Paneling
- Carpeting
- Double berth
- Hanging locker
- Stereo speakers
- Air conditioning
- Under bed drawer
- Teak & holly flooring

Salon

The Corian dinette table is removable. The L-shaped settee folds up to create upper and lower bunks. Optional teak and holly flooring with carpet runner.

- VCR
- Paneling
- Rug runner
- Teak & holly flooring
- Jensen 21" Flat-screen TV
- Fusion Stereo system w/ speakers
- Air conditioning / heater with controls
- Convertible settee w/ removable dinette table (converts to upper and lower bunks)

Head

- Sink
- Shower
- Exhaust fan
- Medicine cabinet
- Vacu-flush, fresh water, overboard, recirculating, electric head w/ holding tank

Galley, Below Deck, Forward Port

- Sink
- Refrigerator
- Microwave oven
- Corian counter tops
- Teak & holly flooring
- One-burner, electric stove
- Pressure fresh water system
- Water heater (not operational)

Helm / Electronics and Navigation

- Transducer
- 4" Compass
- Intel Satellite TV
- Global Star SAT Phone
- Furuno 3-D Fish finder
- Dytex ST1000 Sea temp
- Simrad AP11 Auto pilot
- Simrad NSS7 in Radio box
- Icom 504 VHF Radio (Helm)
- Icom 502 VHF Radio (Tower)
- Fusion MS/AV-750 Stereo system
- Furuno 7" Network remote on Tower
- Simrad Pilot remote on Tower (not operational)
- (2) 12" Furuno NAV NET 3-D Plotter / Radar / Sounder

Deck

- EPIRB
- Tuna Tower
- Transom door
- Bridge curtain
- Spreader lights
- (4) Life jackets
- Navigation lights
- Coaming padding
- Bow pulpit w/ rails
- Helm Deck ice maker
- Goode Electric windlass
- Hand-held Cockpit shower

- Fortress anchor w/ 150' lines
- Windshield washer & wipers
- Viking 4-Man Canister life raft
- Single, fixed, electric search light w/ remote control
- Fresh water, salt water, pressure Deck wash down system
- Port & starboard jump seats aft of the Helm w/ storage below
- Helm seat w/ matching Companion seat to port w/ storage below

Engine and Mechanical Equipment

- Trim tabs
- Fire alarm
- Fuel filters
- (2) Bilge blowers
- Oil pressure alarm
- Oil transfer system
- Fire control system
- Fresh water cooling
- Engine synchronizers
- Raw water sea strainer
- Digital tachs w/ Flo Scan
- Hydraulic, wheel steering
- Engine temperature alarm
- Engine fuel shut-off valve
- Thermal, acoustical insulation
- Bridge, Tower engine controls
- Y-valve emergency bilge blower
- CO2, automatic fire extinguisher
- (3) Automatic, manual bilge blowers
- 10,000 BTU Reverse cycle air conditioner
- Twin 420 hp. Diesel I/B 2001 CAT 3126's w/ 975 hrs.

Electrical System / Equipment

- (4) Batteries
- Dockside cables
- Battery parallel switch
- 12v DC Electrical system
- Automatic battery charger
- 110v AC Electrical system
- Newmar PT-40U Phase III Charger
- Westerbeke 5kW Generator w/ 1200 hrs.

Cockpit / Fishing Equipment

- Fish box
- Outriggers
- Bait freezer
- Tuna Tower
- Live fish well
- (4) Rod holders
- Release 4-Rod rocket launcher
- (4) White / Blue Under water lights
- Tackle drawers on Helm Deck & Cockpit
- 10-Rod Rocket launcher aft hardtop rail and Tower legs

Additional Features / Equipment

- **Constantly upgraded w/ all service records available**

Exclusions

- Owner's personal gear and items

Salesman's Comments

Check out this very well maintained 31 Cabo! Her knowledgeable owner keeps her updated and looking good! OWNER HAS ALREADY CHOSEN HIS NEW BOAT! MAKE OFFERS!!!

Исключения

При продаже яхты исключаются личные вещи владельца.

Отказ от ответственности

Компания предоставляет описание судна или яхты добросовестно, но не может гарантировать точность этой информации, а также не ручается за техническое состояние. Покупатель должен проинструктировать своих агентов или оценщиков исследовать представленную информацию более подробно, по собственному желанию. Продажа судна или яхты, изменение цены или снятие с продажи будет происходить без предварительного уведомления.

ФОТОГРАФИИ

Profile 2



Profile 3



Master Stateroom 1



Master Stateroom 2 - Forward Berth



Master Stateroom 3 - Storage



Salon 1 - Dinette



Salon 2 - Dinette



Salon 3



Salon 4 - TV



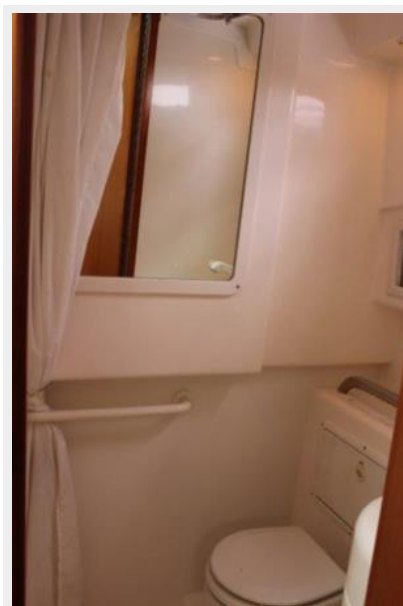
Salon 5 - Stereo System



Head 1



Head 2



Galley 1



Galley 2



Helm / Electronics & Navigation 1



Helm / Electronics & Navigation 2



Helm / Electronics & Navigation 3



Helm / Electronics & Navigation 4 - Tach, Flow Scan & Hour Meter



Helm / Electronics & Navigation 5 - Radio Box



Helm / Electronics & Navigation 6 - Chart Table



Helm / Electronics & Navigation 7 - Tower Helm



Helm / Electronics & Navigation 8 - Tower Network Monitor



Helm / Electronics & Navigation 9 - Tower VHF



Deck 1 - Tower



Deck 2 - View From Tower



Deck 3 - EPIRB



Deck 5 - Helm Seat & Ice Maker



Deck 4 - Helm & Jump Seat



Deck 6 - Companion Seat



Deck 7 - Port Helm Seating



Deck 8 - Port Helm Seat



Deck 9 - Starboard Helm Seating & Storage



Deck 10 - Center Windshield Vent



Engine & Mechanical Equipment 1



Engine & Mechanical Equipment 3 - Port Engine

Engine & Mechanical Equipment 2 - Port Engine



Engine & Mechanical Equipment 5 - Starboard Engine

Engine & Mechanical Equipment 4 - Starboard Engine



Engine & Mechanical Equipment 6



Electrical System / Equipment 1 - Electrical Panel



Electrical System / Equipment 2 - Generator



Cockpit / Fishing Equipment 1 - Tackle Storage



Cockpit / Fishing Equipment 2 - Rocket Launcher



Cockpit / Fishing Equipment 3 - Rocket Launcher



Cockpit / Fishing Equipment 4 - Cockpit



Cockpit / Fishing Equipment 5 - Fish Box



КОНТАКТЫ

Андрей Шестаков (Andrey Shestakov) – ведущий яхтенный брокер отдела продаж яхт и судов компании Shestakov Yacht Sales Inc. Официальный представитель Shestakov Yacht Sales Inc. для русскоговорящих клиентов в центральном офисе компании в Майами/Форт Лодердейл/Флорида/США.

Контактная информация

Email: andrey@shestakovyachtsales.com

Web: shestakovyachtsales.com

Телефоны

Краснодарский край: **+7(918)465-66-44**

США, Майами, Флорида: **+1(954)274-4435**

Время работы

Понедельник – Суббота: **9:00 - 21:00**
EDT

Воскресенье: **Закрито**

Адрес



Harbour Towne Marina, 850 NE 3rd St,
STE 213, Dania, FL 33004