

## MERRYMAID — CAMPER & NICHOLSONS



**Builder:** CAMPER & NICHOLSONS

**Year Built:** 1904

**Model:** Cruising Sailboat

**Price:** PRICE ON APPLICATION

**Location:** Spain

**LOA:** 111' 11" (34.10m)

**Beam:** 17' 11" (5.44m)

**Max Draft:** 12' 6" (3.80m)

**Cruise Speed:** 9 Kts. (10 MPH)

**Max Speed:** 10 Kts. (12 MPH)

Our experienced yacht broker, Andrey Shestakov, will help you choose and buy a yacht that best suits your needs **MERRYMAID — CAMPER & NICHOLSONS** from our catalogue. Presently, at Shestakov Yacht Sales Inc., we have a wide variety of yachts available on our sale's list. We also work in close contact with all the big yacht manufacturers from all over the world.

If you would like to buy a yacht **MERRYMAID — CAMPER & NICHOLSONS** or would like help answering any questions concerning purchasing, selling or chartering a yacht, please call **+1(954)274-4435**

---

# TABLE OF CONTENTS

---

TABLE OF CONTENTS	2
SPECIFICATIONS	3
Basic Information	3
Dimensions	3
Speed, Capacities and Weight	3
Accommodations	3
Hull and Deck Information	4
Engine Information	4
DETAILED INFORMATION	5
Detailed Description	5
Exclusions	12
Disclaimer	12
PHOTOS	13
CONTACTS	17
Contact details	17
Telephones	17
Office hours	17
Address	17

---

# SPECIFICATIONS

---

## Basic Information

---

**Category:** Cruising Sailboat

**Model Year:** 1904

**Year Built:** 1904

**Refit Year:** 2010

**Country:** Spain

## Dimensions

---

**LOA:** 111' 11" (34.10m)

**LWL:** 68' 11" (21.00m)

**LOD:** 98' 7" (30.03m)

**Beam:** 17' 11" (5.44m)

**Max Draft:** 12' 6" (3.80m)

## Speed, Capacities and Weight

---

**Cruise Speed:** 9 Kts. (10 MPH)

**Cruise Speed RPM:** 1400 Kts.

**Cruise Speed Range:** 1120

**Max Speed:** 10 Kts. (12 MPH)

**Max Speed RPM:** 2000 Kts.

**Gross Tonnage:** 88 Pounds

**Water Capacity:** 211.3376416 Gallons

**Fuel Capacity:** 343.4236676 Gallons

## Accommodations

---

**Total Cabins:** 3

**Sleeps:** 6

**Crew Cabin:** 3

**Crew Sleeps:** 6

---

## Hull and Deck Information

---

**Hull Material:** Teak

**Deck Material:** Teak

**Hull Designer:** Charles E. Nicholson

**Exterior Designer:** Charles E. Nicholson

**Interior Designer:** Charles E. Nicholson

---

## Engine Information

---

**Engines:** 1

**Manufacturer:** Perkins

**Model:** Sabre, M265TI

# DETAILED INFORMATION

## Detailed Description

### 1. MAIN CHARACTERISTICS

<b>TYPE</b>	Gaff Cutter Sailing Yacht
<b>BUILDER</b>	Camper & Nicholson
<b>NAVAL ARCHITECT</b>	Charles E. Nicholson
<b>EXTERIOR DESIGN</b>	Charles E. Nicholson
<b>INTERIOR DESIGN</b>	Charles E. Nicholson
<b>YEAR</b>	1904
<b>REFIT</b>	2006 – 2008 at Southampton Yacht Services and again in 2010
<b>CONSTRUCTION</b>	Teak Hull; 2¼” Carvel planked teak on Oak frames, Long lead keel, Teak Superstructure & Decks
<b>CREW</b>	6 Crew
<b>FLAG</b>	UK (Jersey)
<b>ENGINES</b>	1 x 265hp Perkins Sabre, M265TI
<b>GT</b>	87.82 tons

### 2. DIMENSIONS

<b>LOA</b>	<b>34.10m / 111'11"</b>
<b>LOD</b>	<b>30.03m / 98'5"</b>
<b>LWL</b>	<b>21.00m / 68'11"</b>
<b>BEAM</b>	<b>5.44m / 17'10"</b>
<b>DRAFT</b>	<b>3.80m / 12'6"</b>

### 3. SPEED & RANGE UNDER POWER

<b>MAXIMUM SPEED</b>	10 knots
<b>CRUISING SPEED</b>	8.5 knots
<b>FUEL CONSUMPTION</b>	8 litres per hour @ 1,200rpm 10 litres per hour @ 1,400rpm 27 litres per hour @ 2,000rpm
<b>RANGE</b>	1,120nm @ 1,400rpm

#### 4. CAPACITIES

<b>ACCOMMODATION</b>	6 x Guests in 3 cabins
<b>CREW</b>	6 x Crew in 3 cabins (bunks)
<b>FUEL</b>	1,300 litres / 343 US gallons in 2 x tanks
<b>FRESH WATER</b>	800 litres / 211 US gallons in 2 x tanks
<b>BLACK WATER</b>	50 litres / 13 US gallons Aft
	250 litres / 66 US gallons Forward

#### 5. ACCOMMODATION

The accommodation throughout MERRYMAID, done to an exceptional standard by the craftsmen at Southampton Yacht Services, is either original and restored, or a faithful copy of the original.

##### **MASTER SUITE**

Large master cabin aft with a medium-size double bed, a sofa, skylight and an en suite bathroom

##### **GUEST CABINS**

Port and starboard guest cabins each fitted with two bunks and en suite bathroom

##### **MAIN SALOON**

Large comfortable saloon with two sofas and skylight

Table can be lifted to create a dining table

Fire place in the salon running with gas, so it can be switched off anytime

##### **MAIN DECK**

Right forward the helm station, is a cockpit with a foldable table

Nice and cozy area that fits 4 to 6 guests

The steering has a quite unique instrument that shows the angle of steering

##### **CREW**

Crew cabins:

Proper cabins for Captain (1 x bunk with possibility to add 1 x hammac over the captain's bunk) and First mate/engineer (2 x bunks)

Third crew cabin is in the bow

Separate head and shower room

Spacious crew mess with galley

#### 6. MECHANICAL EQUIPMENT

1 x 265hp Perkins Sabre, M265TI, Max

---

<b>ENGINES</b>	rpm 2,200, 6 Cylinders (2004)
<b>ENGINE HOURS</b>	Serviced to zero hours in 2016
<b>GEARBOX</b>	PRM 1000 connected via Cardan shafts to Aqua Drive-CVB-32-30 thrust bearing. Deep Sea seal on the inboard end of the stern tube
<b>PROPELLERS</b>	3-blade fixed propeller
<b>STEERING SYSTEM</b>	Direct steering, no hydraulics, working with quadrants & a gear, original rudder angle indicator
<b>GENERATORS</b>	Onan 17.5kVA - 80 amps max – installed 2016 Consumption 3.4 l/h @ 40 amps Engine driven alternator 100 amp (installed) Engine driven alternator 150 amp (in the lazarette)
<b>GENERATOR HOURS</b>	170 hours (16th Feb 2017)
<b>ELECTRICITY</b>	AC 230 V / DC 24 V 50Hz
<b>BATTERIES</b>	12# Dryfit A600 2v Gel cells with 1500ah/20 hr Engine/Services separated and with parallel switch 24v separate DC bank for the NAV & COM with parallel switch
<b>CHARGERS</b>	3# Mastervolt 100 amp battery chargers
<b>CONVERTERS</b>	Mastervolt inverter 2.5kVA
<b>AIR CONDITIONING</b>	AC unit 200 litres per hour PTO Hydraulic 200 litres per hour (DCC system)
<b>HEATING</b>	Webasto 2 units DVW 2010
<b>WATER MAKER</b>	2 x Sea Fresh water makers 2 x C-Warm CWB78-VTC at 78 l each with twin coils

**TOILET SYSTEM****SEWAGE SYSTEM****FUEL SEPARATOR**

and double Heater elements

4 x Heads

Hamann chlorine waste system

Duplex Racor Filter to engine

Simplex Racor filter to generator

Flexible armoured hose used for all pipe work.

Manually operated fuel cut offs to feeds and returns

**7. SAILS & RIGGING**

Apart from the mainsail, most of the sails are from 2014, and in good condition

**SAILS**

Contender Dacron

**SAIL AREA**Total 953m<sup>2</sup> / Working 483m<sup>2</sup>**MAIN SAIL**220.50m<sup>2</sup> (2013)**SPINNAKER (MPS)**252.8m<sup>2</sup>**TRYSAIL**72.5m<sup>2</sup>**STAYSAIL**57.3m<sup>2</sup>**STAILSAIL STROM**30.0m<sup>2</sup>**JIB YANKEE**87.1m<sup>2</sup>**JIB WORKING**48.1m<sup>2</sup>**JIB TOP LARGE**61.9m<sup>2</sup>**JIB TOP SMALL**27.9m<sup>2</sup>**TOP SAIL LARGE**55.8m<sup>2</sup>**TOP SAIL WORKING**39.5m<sup>2</sup>**SPARS**

Collars

**REEFING SYSTEM**

Adjustable with the gaff to 2 reef points on the mast

**MAINSAIL GAFF**

11.00m/36'1" Sitka Spruce

**BOWSPRIT**

8.00m/26'3" Columbian Pine

**BOOM**

19.00m/62'4" Columbian Pine

**SPREADERS**

Ash

**MASTS**

Lower Mast 22.40m/73'6" Columbian Pine

Top Mast 12.40m/40'8" Columbian Pine



**RIGGING  
WINCHES**

Martins Rigging  
Meissner Winches (4 x electric CMB  
36 power,  
4 x CMBH manual, 2 x 28-STB-47 self-  
tailing)

*8. NAVIGATION EQUIPMENT*

In 2015 all the electronics were replaced with an  
interfaced B & G system

**MAGNETIC COMPASS**

Yes

**AUTOMATIC PILOT**

B&G H3000 Auto Pilot (2015)

**SONAR**

Interphase forward looking sonar

**ECHO SOUNDER**

Yes

**RADAR**

Yes

**AIS**

Fleet 33 BGAN, Iridium remote distress  
alarm

**GPS**

Furuno GPS back up unit

**CHART PLOTTER**

3 x Chart plotters

Full catalogue of world charts, paper  
and electronic

**NAVTEX**

NavNet 3D System, SAT C, Radar w/  
ARPA

**WEATHER FAX**

Max Sea Weather Routing Software

**LOG**

Yes

**WIND INSTRUMENTS**

B&G H3000 wind instruments with  
XDR fins,

wind speed & direction (2015)

*9. COMMUNICATION EQUIPMENT***VHF**

2 x VHF DSC fixed units with  
independent aerials

VHF hand held radios

**GSM**

Yes

**TELEPHONE EXCHANGE**

Yes

**SATELLITE PHONE**

2 x Iridium Motorola 9505A

**BROADBAND INTERNET**

Fleet 33 BGAN

**OFFICE EQUIPMENT**

Printer / fax HP Hewlett Packard

## 10. DECK EQUIPMENT

### **ANCHOR WINDLASSES**

Thomas Reid hydraulic windlass with double gypsy

DC 24V

### **AFT WARPING CAPSTANS**

2 x Self-tailing capstans, Stern

### **ANCHORS**

Bronze Fisherman Anchor 140kg

CQR Anchor 108kg

### **ANCHOR CHAINS**

14mm stud link chain 140m and 60m

### **PASSERELLE**

Carbon fibre

### **SIDE BOARDING LADDER**

Starboard side, permanent

### **AWNINGS**

Full, in two parts, forward and aft of the mast

## 11. ENTERTAINMENT EQUIPMENT

### **TV / DVD**

Samsung TV with DVD player in the saloon

### **MUSIC SYSTEM**

SONOS sound system

## 12. GALLEY & LAUNDRY EQUIPMENT

### **GALLEY**

- 1 x Frigoboat Refrigerator
- 2 x Deep freezers, custom made
- 2 x Frigomatic compressors
- 1 x Oven
- 1 x Stove with 3 hobs
- 1 x Microwave BOSCH
- 1 x Icemaker Isotherm

### **LAUNDRY**

- 1 x Washing/Dryer Miele WT2780

## 13. SECURITY & SAFETY EQUIPMENT

### **SAFETY**

- EPIRB MacMurdo 406GHz EPIRB with GPS, 2 x S.A.R.T.
- 12 x M.O.B locator beacons (Mobilalarm V100) with EPIRB and onboard alarm
- Life rafts: 2 x Zodiac 8 man Life raft with A Pack (serviced 2016)

- Life jackets: 12 x 'Kru' , self-inflating life jackets with harnesses (serviced 2016)

## **FIRE FIGHTING**

- 2 x 2" Fire hydrants in the covering boards forward and aft
- FE-227 manually operated extinguisher in the engine space
- Machinery space intake/exhaust ventilation with manual/automatic shutdown
- Exhaust ventilation with automatic shutdown
- Heat and smoke detectors in machinery space, lazarette and galley
- 1 x 2 kg Co2 extinguisher in galley/crew area
- 8 x Handheld extinguishers located throughout vessel (2016)
- Gas alarms below galley, saloon, galley bilge and aft bilge

## **BILGE SYSTEM**

- 220v bilge and main fire 1 ½" pump
- 24v Auxiliary fire 1 ¼" pump with deck outlets fore & aft
- Manual deck mounted bilge pump
- 2 x Automatic 'Rule 2000' in main bilge space with alarms
- PTO clutch pump running off the engine
- Crash pump 3" petrol driven (storage)

## **MEDICAL EQUIPMENT**

- Ship's Medicine Chest w/ Rx 3.0 (2015, needs service)
- First Responder Kit w/ Rx 3.0 x 2
- Philips FRX Defibrillator

## *14. TENDERS & WATERSPORTS EQUIPMENT*

### **TENDERS**

- Zodiac Pro 7 Man, 4.30m, Yamaha 60hp 4-stroke

### **WATER SPORTS**

- Classic Sailing Dinghy, built by Butler and Co (2009)

### **DIVING**

- 2 x Scuba Sets with Bauer Junior II Compressor and accessories

## *15. COMMENTS*

The recent history of MERRYMAID makes for extraordinary reading. After many years as a Solent based houseboat, she was rescued from a French yard part way through a refit, and shipped to the South Coast of England, returning to her birthplace some 100 years earlier.

---

Following a complete and thorough rebuild by the renowned yard Southampton Yacht Services (Velsheda, Thendara, etc.) she then departed on a circumnavigation with her proud owner. All the original elements of her hull and interior were saved, but her systems were brought into the 21st century, making of her a yacht capable of cruising in comfort and safety.

The first gaff cutter to navigate the North West passage, she visited many fascinating and remote corners of the earth, details of which can be seen on

On returning to Europe, MERRYMAID once again visited SYS for a facelift and cosmetic overhaul, bringing her back to perfect condition and ready for another phase in her long and eventful life. Now in her home port of Palma, she is fully equipped with spare parts, and despite her age, in excellent condition. She retains all the charm and character of a true classic.

## **Exclusions**

---

Owner's personal belongings.

## **Disclaimer**

---

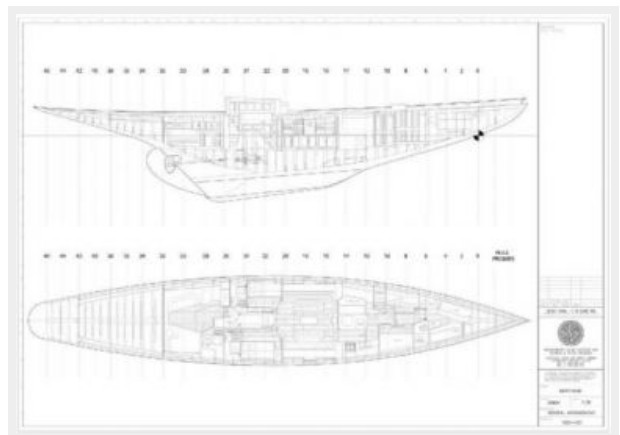
The Company offers the details of this vessel or yacht in good faith but cannot guarantee or warrant the accuracy of this information nor warrant the condition of the vessel. A buyer should instruct his representatives, agents, or his surveyors, to investigate such details as the buyer desires validated. This vessel or yacht is offered subject to prior sale, price change, or withdrawal without notice.

# PHOTOS











# CONTACTS

---

Andrey Shestakov, leading yacht broker of the sales department of Shestakov Yacht Sales Inc. Shestakov Yacht Sales Inc., the official representative of the Miami/Fort Lauderdale FL headquarters.

## Contact details

---

Email: [andrey@shestakovyachtsales.com](mailto:andrey@shestakovyachtsales.com)

Web: [shestakovyachtsales.com/en/](http://shestakovyachtsales.com/en/)

## Telephones

---

USA: +1(954)274-4435

## Office hours

---

Monday – Saturday: **9:00 - 21:00** EDT

Sunday: **closed**

## Address

---



Harbour Towne Marina, 850 NE 3rd St,  
STE 213, Dania, FL 33004