

MERRYMAID — CAMPER & NICHOLSONS



Судостроитель:

CAMPER & NICHOLSONS

Год постройки: 1904

Модель: Крейсерская яхта

Цена: **ЦЕНА ЯХТЫ ПО ЗАПРОСУ**

Местонахождение: Spain

Длина общая: 111' 11" (34.10m)

Ширина: 17' 11" (5.44m)

Макс. осадка: 12' 6" (3.80m)

Крейс. скорость: 9 Kts. (10 MPH)

Макс. скорость: 10 Kts. (12 MPH)

Купить **MERRYMAID — CAMPER & NICHOLSONS** а также выбрать подходящую вам яхту из нашего каталога яхт вам поможет опытный яхтенный брокер Андрей Шестаков. На сегодняшний день компания **Shestakov Yacht Sales Inc.** имеет большое количество яхт в собственном списке продаж, а также тесно сотрудничает со всеми крупными яхтенными производителями по всему миру.

Для того чтобы купить яхту **MERRYMAID — CAMPER & NICHOLSONS** а также проконсультироваться по любому вопросу связанному с покупкой, продажей, чартером яхт позвоните по телефону **+7(918)465-66-44**.

ОГЛАВЛЕНИЕ

ОГЛАВЛЕНИЕ	2
ХАРАКТЕРИСТИКИ	3
Основная информация	3
Размеры	3
Скорость, вместимость и масса	3
Размещение	3
Корпус и палуба	4
Информация о двигателе	4
ПОДРОБНОЕ ОПИСАНИЕ	5
Detailed Description	5
Исключения	12
Отказ от ответственности	12
ФОТОГРАФИИ	13
КОНТАКТЫ	17
Контактная информация	17
Телефоны	17
Время работы	17
Адрес	17

ХАРАКТЕРИСТИКИ

Основная информация

Тип судна: Крейсерская яхта

Модельный год: 1904

Год постройки: 1904

Год обновления: 2010

Страна: Spain

Размеры

Длина общая: 111' 11" (34.10m)

Длина по ватерлинии: 68' 11" (21.00m)

Длина палубы: 98' 7" (30.03m)

Ширина: 17' 11" (5.44m)

Макс. осадка: 12' 6" (3.80m)

Скорость, вместимость и масса

Крейс. скорость: 9 Kts. (10 MPH)

Крейсерская скорость поворота: 1400 Kts.

Дальность на крейсерской скорости: 1120

Макс. скорость: 10 Kts. (12 MPH)

Макс. скорость поворота: 2000 Kts.

Чистый вес: 88 Pounds

Вместимость воды: 211.3376416 Gallons

Объем топливного бака: 343.4236676 Gallons

Размещение

Всего кают: 3

Спальные места: 6

Каюты экипажа: 3

Спальных мест экипажа: 6

Корпус и палуба

Материал корпуса: Teak

Материал палубы: Teak

Дизайнер корпуса: Charles E. Nicholson **Дизайнер экстерьера:** Charles E. Nicholson

Дизайнер интерьера: Charles E. Nicholson

Информация о двигателе

Двигатели: 1

Производитель: Perkins

Модель: Sabre, M265TI

ПОДРОБНОЕ ОПИСАНИЕ

Detailed Description

1. MAIN CHARACTERISTICS

TYPE	Gaff Cutter Sailing Yacht
BUILDER	Camper & Nicholson
NAVAL ARCHITECT	Charles E. Nicholson
EXTERIOR DESIGN	Charles E. Nicholson
INTERIOR DESIGN	Charles E. Nicholson
YEAR	1904
REFIT	2006 – 2008 at Southampton Yacht Services and again in 2010
CONSTRUCTION	Teak Hull; 2¼” Carvel planked teak on Oak frames, Long lead keel, Teak Superstructure & Decks
CREW	6 Crew
FLAG	UK (Jersey)
ENGINES	1 x 265hp Perkins Sabre, M265TI
GT	87.82 tons

2. DIMENSIONS

LOA	34.10m / 111'11"
LOD	30.03m / 98'5"
LWL	21.00m / 68'11"
BEAM	5.44m / 17'10"
DRAFT	3.80m / 12'6"

3. SPEED & RANGE UNDER POWER

MAXIMUM SPEED	10 knots
CRUISING SPEED	8.5 knots
FUEL CONSUMPTION	8 litres per hour @ 1,200rpm 10 litres per hour @ 1,400rpm 27 litres per hour @ 2,000rpm
RANGE	1,120nm @ 1,400rpm

4. CAPACITIES

ACCOMMODATION	6 x Guests in 3 cabins
CREW	6 x Crew in 3 cabins (bunks)
FUEL	1,300 litres / 343 US gallons in 2 x tanks
FRESH WATER	800 litres / 211 US gallons in 2 x tanks
BLACK WATER	50 litres / 13 US gallons Aft
	250 litres / 66 US gallons Forward

5. ACCOMMODATION

The accommodation throughout MERRYMAID, done to an exceptional standard by the craftsmen at Southampton Yacht Services, is either original and restored, or a faithful copy of the original.

MASTER SUITE

Large master cabin aft with a medium-size double bed, a sofa, skylight and an en suite bathroom

GUEST CABINS

Port and starboard guest cabins each fitted with two bunks and en suite bathroom

MAIN SALOON

Large comfortable saloon with two sofas and skylight

Table can be lifted to create a dining table

Fire place in the salon running with gas, so it can be switched off anytime

MAIN DECK

Right forward the helm station, is a cockpit with a foldable table

Nice and cozy area that fits 4 to 6 guests

The steering has a quite unique instrument that shows the angle of steering

CREW

Crew cabins:

Proper cabins for Captain (1 x bunk with possibility to add 1 x hammac over the captain's bunk) and First mate/engineer (2 x bunks)

Third crew cabin is in the bow

Separate head and shower room

Spacious crew mess with galley

6. MECHANICAL EQUIPMENT

1 x 265hp Perkins Sabre, M265TI, Max

ENGINES	rpm 2,200, 6 Cylinders (2004)
ENGINE HOURS	Serviced to zero hours in 2016
GEARBOX	PRM 1000 connected via Cardan shafts to Aqua Drive-CVB-32-30 thrust bearing. Deep Sea seal on the inboard end of the stern tube
PROPELLERS	3-blade fixed propeller
STEERING SYSTEM	Direct steering, no hydraulics, working with quadrants & a gear, original rudder angle indicator
GENERATORS	Onan 17.5kVA - 80 amps max – installed 2016 Consumption 3.4 l/h @ 40 amps Engine driven alternator 100 amp (installed) Engine driven alternator 150 amp (in the lazarette)
GENERATOR HOURS	170 hours (16th Feb 2017)
ELECTRICITY	AC 230 V / DC 24 V 50Hz
BATTERIES	12# Dryfit A600 2v Gel cells with 1500ah/20 hr Engine/Services separated and with parallel switch 24v separate DC bank for the NAV & COM with parallel switch
CHARGERS	3# Mastervolt 100 amp battery chargers
CONVERTERS	Mastervolt inverter 2.5kVA
AIR CONDITIONING	AC unit 200 litres per hour PTO Hydraulic 200 litres per hour (DCC system)
HEATING	Webasto 2 units DVW 2010
WATER MAKER	2 x Sea Fresh water makers 2 x C-Warm CWB78-VTC at 78 l each with twin coils

TOILET SYSTEM**SEWAGE SYSTEM****FUEL SEPARATOR**

and double Heater elements

4 x Heads

Hamann chlorine waste system

Duplex Racor Filter to engine

Simplex Racor filter to generator

Flexible armoured hose used for all pipe work.

Manually operated fuel cut offs to feeds and returns

7. SAILS & RIGGING

Apart from the mainsail, most of the sails are from 2014, and in good condition

SAILS

Contender Dacron

SAIL AREATotal 953m² / Working 483m²**MAIN SAIL**220.50m² (2013)**SPINNAKER (MPS)**252.8m²**TRYSAIL**72.5m²**STAYSAIL**57.3m²**STAILSAIL STROM**30.0m²**JIB YANKEE**87.1m²**JIB WORKING**48.1m²**JIB TOP LARGE**61.9m²**JIB TOP SMALL**27.9m²**TOP SAIL LARGE**55.8m²**TOP SAIL WORKING**39.5m²**SPARS**

Collars

REEFING SYSTEM

Adjustable with the gaff to 2 reef points on the mast

MAINSAIL GAFF

11.00m/36'1" Sitka Spruce

BOWSPRIT

8.00m/26'3" Columbian Pine

BOOM

19.00m/62'4" Columbian Pine

SPREADERS

Ash

MASTS

Lower Mast 22.40m/73'6" Columbian Pine

Top Mast 12.40m/40'8" Columbian Pine

**RIGGING
WINCHES**

Martins Rigging
Meissner Winches (4 x electric CMB
36 power,
4 x CMBH manual, 2 x 28-STB-47 self-
tailing)

8. NAVIGATION EQUIPMENT

In 2015 all the electronics were replaced with an
interfaced B & G system

MAGNETIC COMPASS

Yes

AUTOMATIC PILOT

B&G H3000 Auto Pilot (2015)

SONAR

Interphase forward looking sonar

ECHO SOUNDER

Yes

RADAR

Yes

AIS

Fleet 33 BGAN, Iridium remote distress
alarm

GPS

Furuno GPS back up unit

CHART PLOTTER

3 x Chart plotters

Full catalogue of world charts, paper
and electronic

NAVTEX

NavNet 3D System, SAT C, Radar w/
ARPA

WEATHER FAX

Max Sea Weather Routing Software

LOG

Yes

WIND INSTRUMENTS

B&G H3000 wind instruments with
XDR fins,

wind speed & direction (2015)

*9. COMMUNICATION EQUIPMENT***VHF**

2 x VHF DSC fixed units with
independent aerials

VHF hand held radios

GSM

Yes

TELEPHONE EXCHANGE

Yes

SATELLITE PHONE

2 x Iridium Motorola 9505A

BROADBAND INTERNET

Fleet 33 BGAN

OFFICE EQUIPMENT

Printer / fax HP Hewlett Packard

10. DECK EQUIPMENT

ANCHOR WINDLASSES

Thomas Reid hydraulic windlass with double gypsy

DC 24V

AFT WARPING CAPSTANS

2 x Self-tailing capstans, Stern

ANCHORS

Bronze Fisherman Anchor 140kg

CQR Anchor 108kg

ANCHOR CHAINS

14mm stud link chain 140m and 60m

PASSERELLE

Carbon fibre

SIDE BOARDING LADDER

Starboard side, permanent

AWNINGS

Full, in two parts, forward and aft of the mast

11. ENTERTAINMENT EQUIPMENT

TV / DVD

Samsung TV with DVD player in the saloon

MUSIC SYSTEM

SONOS sound system

12. GALLEY & LAUNDRY EQUIPMENT

GALLEY

- 1 x Frigoboat Refrigerator
- 2 x Deep freezers, custom made
- 2 x Frigomatic compressors
- 1 x Oven
- 1 x Stove with 3 hobs
- 1 x Microwave BOSCH
- 1 x Icemaker Isotherm

LAUNDRY

- 1 x Washing/Dryer Miele WT2780

13. SECURITY & SAFETY EQUIPMENT

SAFETY

- EPIRB MacMurdo 406GHz EPIRB with GPS, 2 x S.A.R.T.
- 12 x M.O.B locator beacons (Mobilalarm V100) with EPIRB and onboard alarm
- Life rafts: 2 x Zodiac 8 man Life raft with A Pack (serviced 2016)

- Life jackets: 12 x 'Kru' , self-inflating life jackets with harnesses (serviced 2016)

FIRE FIGHTING

- 2 x 2" Fire hydrants in the covering boards forward and aft
- FE-227 manually operated extinguisher in the engine space
- Machinery space intake/exhaust ventilation with manual/automatic shutdown
- Exhaust ventilation with automatic shutdown
- Heat and smoke detectors in machinery space, lazarette and galley
- 1 x 2 kg Co2 extinguisher in galley/crew area
- 8 x Handheld extinguishers located throughout vessel (2016)
- Gas alarms below galley, saloon, galley bilge and aft bilge

BILGE SYSTEM

- 220v bilge and main fire 1 1/2" pump
- 24v Auxiliary fire 1 1/4" pump with deck outlets fore & aft
- Manual deck mounted bilge pump
- 2 x Automatic 'Rule 2000' in main bilge space with alarms
- PTO clutch pump running off the engine
- Crash pump 3" petrol driven (storage)

MEDICAL EQUIPMENT

- Ship's Medicine Chest w/ Rx 3.0 (2015, needs service)
- First Responder Kit w/ Rx 3.0 x 2
- Philips FRX Defibrillator

14. TENDERS & WATERSPORTS EQUIPMENT

TENDERS

- Zodiac Pro 7 Man, 4.30m, Yamaha 60hp 4-stroke

WATER SPORTS

- Classic Sailing Dinghy, built by Butler and Co (2009)

DIVING

- 2 x Scuba Sets with Bauer Junior II Compressor and accessories

15. COMMENTS

The recent history of MERRYMAID makes for extraordinary reading. After many years as a Solent based houseboat, she was rescued from a French yard part way through a refit, and shipped to the South Coast of England, returning to her birthplace some 100 years earlier.

Following a complete and thorough rebuild by the renowned yard Southampton Yacht Services (Velsheda, Thendara, etc.) she then departed on a circumnavigation with her proud owner. All the original elements of her hull and interior were saved, but her systems were brought into the 21st century, making of her a yacht capable of cruising in comfort and safety.

The first gaff cutter to navigate the North West passage, she visited many fascinating and remote corners of the earth, details of which can be seen on

On returning to Europe, MERRYMAID once again visited SYS for a facelift and cosmetic overhaul, bringing her back to perfect condition and ready for another phase in her long and eventful life. Now in her home port of Palma, she is fully equipped with spare parts, and despite her age, in excellent condition. She retains all the charm and character of a true classic.

Исключения

При продаже яхты исключаются личные вещи владельца.

Отказ от ответственности

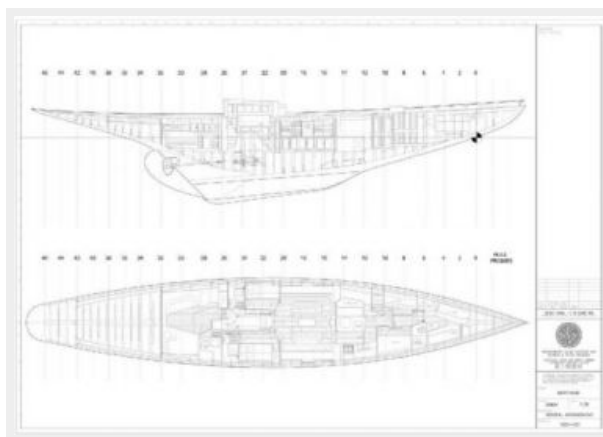
Компания предоставляет описание судна или яхты добросовестно, но не может гарантировать точность этой информации, а также не ручается за техническое состояние. Покупатель должен проинструктировать своих агентов или оценщиков исследовать представленную информацию более подробно, по собственному желанию. Продажа судна или яхты, изменение цены или снятие с продажи будет происходить без предварительного уведомления.

ФОТОГРАФИИ









КОНТАКТЫ

Андрей Шестаков (Andrey Shestakov) – ведущий яхтенный брокер отдела продаж яхт и судов компании Shestakov Yacht Sales Inc. Официальный представитель Shestakov Yacht Sales Inc. для русскоговорящих клиентов в центральном офисе компании в Майами/Форт Лодердейл/Флорида/США.

Контактная информация

Email: andrey@shestakovyachtsales.com

Web: shestakovyachtsales.com

Телефоны

Краснодарский край: **+7(918)465-66-44**

США, Майами, Флорида: **+1(954)274-4435**

Время работы

Понедельник – Суббота: **9:00 - 21:00**
EDT

Воскресенье: **Закрито**

Адрес



Harbour Towne Marina, 850 NE 3rd St,
STE 213, Dania, FL 33004