

TIMIKA — MAINSHIP



Судостроитель: MAINSHIP

Год постройки: 2005

Модель: Траулер

Цена: **ЦЕНА ЯХТЫ ПО ЗАПРОСУ**

Местонахождение: United States

Длина общая: 34' 0" (10.36m)

Ширина: 14' 3" (4.34m)

Макс. осадка: 3' 4" (1.02m)

Крейс. скорость: 15 Kts. (17 MPH)

Макс. скорость: 19 Kts. (22 MPH)

Купить Timika — MAINSHIP а также выбрать подходящую вам яхту из нашего каталога яхт вам поможет опытный яхтенный брокер Андрей Шестаков. На сегодняшний день компания Shestakov Yacht Sales Inc. имеет большое количество яхт в собственном списке продаж, а также тесно сотрудничает со всеми крупными яхтенными производителями по всему миру.

Для того чтобы купить яхту Timika — MAINSHIP а также проконсультироваться по любому вопросу связанному с покупкой, продажей, чартером яхт позвоните по телефону **+7(918)465-66-44**.

ОГЛАВЛЕНИЕ

ОГЛАВЛЕНИЕ	2
ХАРАКТЕРИСТИКИ	4
Обзор	4
Основная информация	4
Размеры	4
Скорость, вместимость и масса	4
Размещение	5
Корпус и палуба	5
Информация о двигателе	5
ПОДРОБНОЕ ОПИСАНИЕ	6
Introduction	6
Walkthrough	6
Master Stateroom	6
Salon/Dining	6
Galley	6
Lower Helm	7
Aft Deck	7
Fly Bridge	7
Audio & Visual Equipment	7
Electronics	7
Electrical Equipment	8
Mechanical	8
Deck Equipment	8
Safety & Fire Protection	9
Exclusions	9
Исключения	9
Отказ от ответственности	9
ФОТОГРАФИИ	10

КОНТАКТЫ	23
Контактная информация	23
Телефоны	23
Время работы	23
Адрес	23

ХАРАКТЕРИСТИКИ

Обзор

Timika has spent her entire life cruising during the summers in the freshwater of the Great Lakes. SHE HAS NEVER TASTED SALT WATER. She is stored in a heated storage building out of the water and the elements for 6 months every year. The owners of Timika have owned many yachts over the years so they know how to maintain them to be in better than new condition. Timika's custom claret red painted hull makes her stand out in any harbor or yacht club. Upon viewing this boat you will think that you are looking at a 2016 or 2017 Yacht.

A change in the owner's plans has made this the Best 34 Mainship Fast Trawler on the market today!

Основная информация

Тип судна: Траулер	Модельный год: 2005
Год постройки: 2005	Страна: United States
Верх: Bimini Top	Открытая палуба мостика: Да
Кубрик: Да	

Размеры

Длина общая: 34' 0" (10.36m)	Ширина: 14' 3" (4.34m)
Макс. осадка: 3' 4" (1.02m)	Трапы: 15' 0" (4.57m)

Скорость, вместимость и масса

Крейс. скорость: 15 Kts. (17 MPH)	Макс. скорость: 19 Kts. (22 MPH)
Водоизмещение: 20000 Pounds	Вместимость воды: 70 Gallons
Вместимость сточного бака: 34 Gallons	Объем топливного бака: 250 Gallons

Размещение

Всего кают: 1

Спальные места: 4

Всего ком. состава: 1

Корпус и палуба

Материал корпуса: Fiberglass

Информация о двигателе

Двигатели: 1

Производитель: Yanmar

Модель: 6LYA-STP

Тип двигателя: Inboard

Тип топлива: Diesel

ПОДРОБНОЕ ОПИСАНИЕ

Introduction

Timika is a well maintained, fresh water, single screw 34' Mainship Fast Trawler with bow and stern thrusters.

Walkthrough

Entering the salon from the covered aft deck, you will find a sleeper sofa and table to port, lounge chairs to starboard and lower helm and a side deck access door starboard forward. Step down two steps and you will find the galley to port, head to starboard and the master stateroom forward. The engine room access is in the aft deck. The interior wood is all satin finished cherry and new interior carpet was installed in 2013.

There is a master stateroom forward with a centerline queen size berth. The ensuite head is to starboard. There is also a Futon style sleeper sofa in the salon.

Master Stateroom

The master stateroom is forward and offers a centerline queen size berth, a Bomar overhead hatch with screen and shade and two portholes, hanging locker, storage drawers, reading lights and carpet.

The ensuite head is to starboard and aft of the master stateroom and also has a door from the foyer.

Salon/Dining

The salon offers double aluminum entry doors aft, opening center windshield window and side windows, sleeper sofa, and a wine storage cabinet port aft, bar stools at the galley counter port forward, lower helm and side deck access door starboard forward, lounge chairs to starboard, electrical panel starboard aft, carpet and wood blinds. Custom overhead light dimmer. All furniture was reupholstered in 2013.

Galley

The galley is located to port and forward of the salon.

- (2) Wicker barstools at counter
- GE microwave oven

- Princess electric 2-burner cooktop
- Nova-Kool 12vdc/110vac refrigerator/freezer
- Corian countertops
- Synthetic teak & holly sole with storage below
- Stainless steel sink

Lower Helm

The lower helm is located starboard forward in the salon and offers a full helm with bow and stern thruster controls, electronics as listed in the electronics section, ZF electronic engine controls, trim tab controls, custom enlarged side window, and a starboard side deck access door.

Aft Deck

The covered Aft Deck offers non-skid decks, molded-in stairs to the flybridge, transom door to the swim platform, same level access to the side decks, fold-down steps on each side bulwark, transom storage boxes and access to the engine room and lazarette. There is a raw water washdown, fresh water shower and shore power and cable TV connections.

Fly Bridge

The flybridge offers a full helm forward, a Bimini (new 2013) and Eisenglass enclosure (in storage), L-shaped seating port aft, three Garelick Eez-In helm seats, benchseat to starboard, non-skid decks, folding mast, folding table, Magma stainless steel BBQ grill and spreader lights.

Audio & Visual Equipment

- KVH M3 TV System (2013)
- 29 inch Samsung TV
- JVC KD-DV5000 AM/FM/DVD/MP# player in Salon
- JVC KD-G200 AM/FM/CD-RW player on Flybridge

Electronics

- Raymarine Radar and depth sounder linked with C80 chart plotters
- Raymarine ST8001 autopilot on Flybridge
- Raymarine SmartController wireless autopilot remote at Lower Helm
- 2 X Raymarine C80 chart plotters on Flybridge
- Remote Control Spotlight
- Raymarine Ray240 VHF on Flybridge

- KVH Azimuth 1000 compass on Flybridge
- Danforth Global Balance magnetic compass at Lower Helm
- Humminbird depth sounder at Lower Helm

Electrical Equipment

- Kohler 8EOZO 8 kW generator
- 2 X Charles Marine isolation transformers
- 3 X 8D start and house batteries (2016)
- 1 X Group 27 generator start battery (2012)
- Pro-Mariner Portech 50 amp battery charger
- 2 X 30 amp shore chords

Mechanical

The engine room is accessed from the aftdeck by lifting the bottom section of the molded-in aftdeck to flybridge stairs.

- Yanmar 6LHA-STP 370 hp main engine
- ZF 63A gearbox
- ZF MicroCommander electronic engine controls
- Dual Racor 75/900MAX fuel filters for main engine
- Racor fuel polishing system
- Oil X-Changer oil change system
- Seastar hydraulic steering system
- Attwood 6 gallon water heater
- Fresh water washdown in engine room
- Bennett trim tabs
- Sidepower bow and stern thrusters
- Marine Air Systems 2-zone reverse cycle air conditioning system
- Marine Hardware sea strainers
- 26" X 20" 4-bladed propeller
- Stong dripless shaft seal

Deck Equipment

- Lewmar anchor windlass with foot pedal controls at the windlass and controls at both helms
- Delta anchor
- Stainless steel sampson post
- Stainless steel deck hardware and rails
- Swimplatform

- Swim ladder
- Bomar deck hatch
- Raw water washdown and fresh water shower in aftdeck
- Dock fresh water connection in aftdeck
- Custom stainless dinghy davit system
- 10' Achilles HB 100 tender

Safety & Fire Protection

- Sea-Fire 1301 engine room fire suppression system
- Safe-T-Alert carbon monoxide detector
- Fire extinguishers
- Life jackets
- Flares

Exclusions

Mermaid table in salon, all artwork, photos, fish, etc. Tools, charts, 2 deck chairs on flybridge, and owners personal items.

Исключения

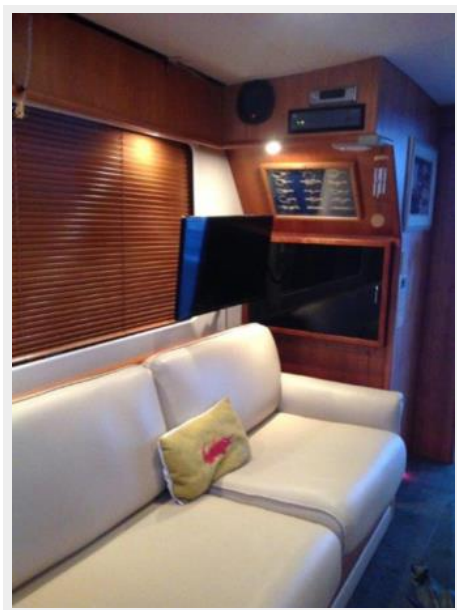
При продаже яхты исключаются личные вещи владельца.

Отказ от ответственности

Компания предоставляет описание судна или яхты добросовестно, но не может гарантировать точность этой информации, а также не ручается за техническое состояние. Покупатель должен проинструктировать своих агентов или оценщиков исследовать представленную информацию более подробно, по собственному желанию. Продажа судна или яхты, изменение цены или снятие с продажи будет происходить без предварительного уведомления.

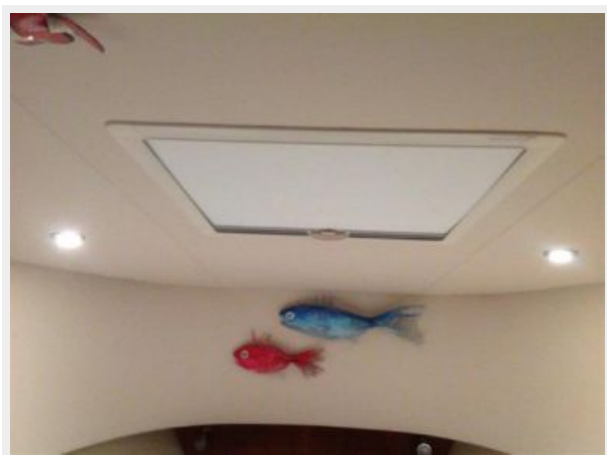
ФОТОГРАФИИ

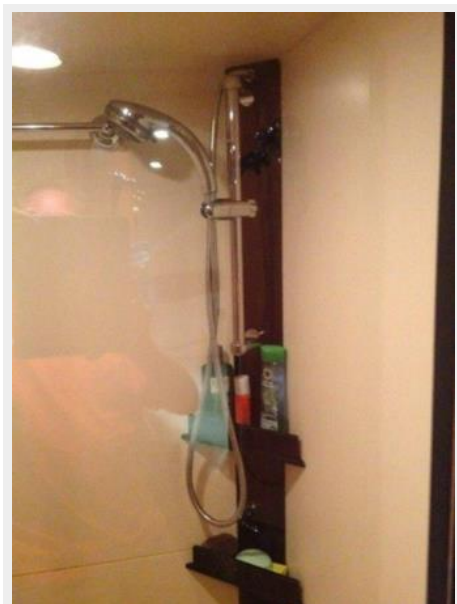
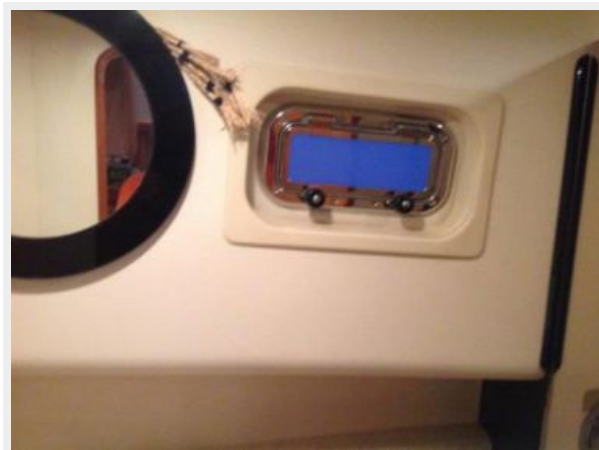


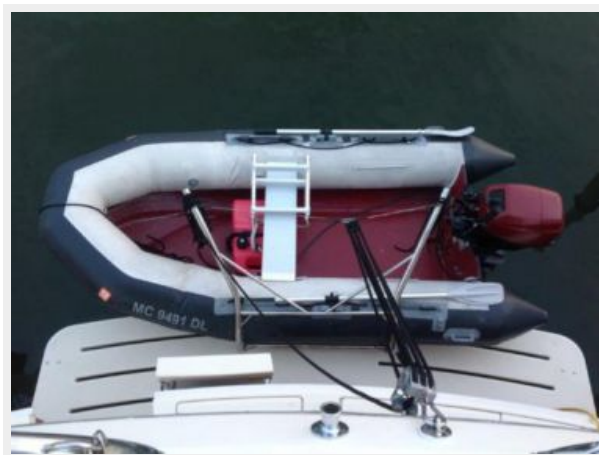
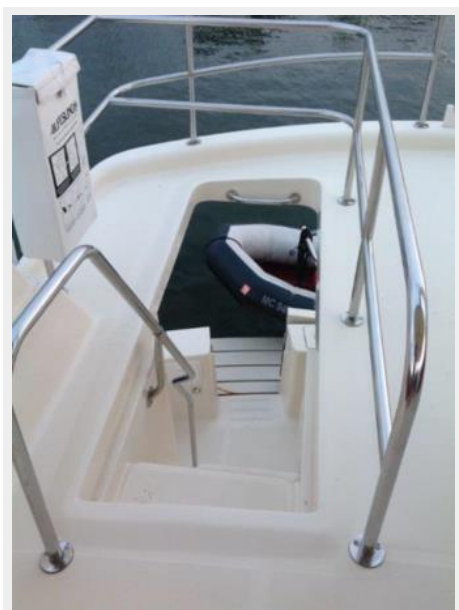


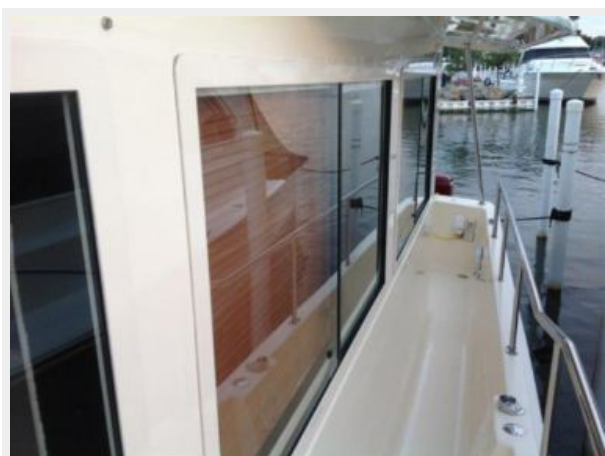




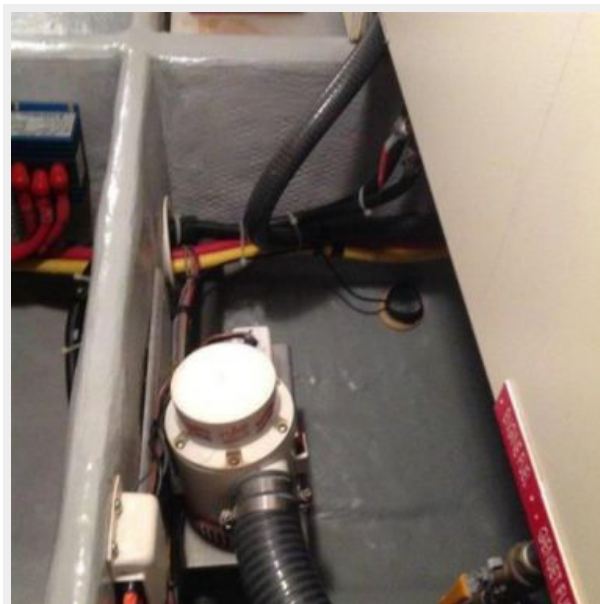
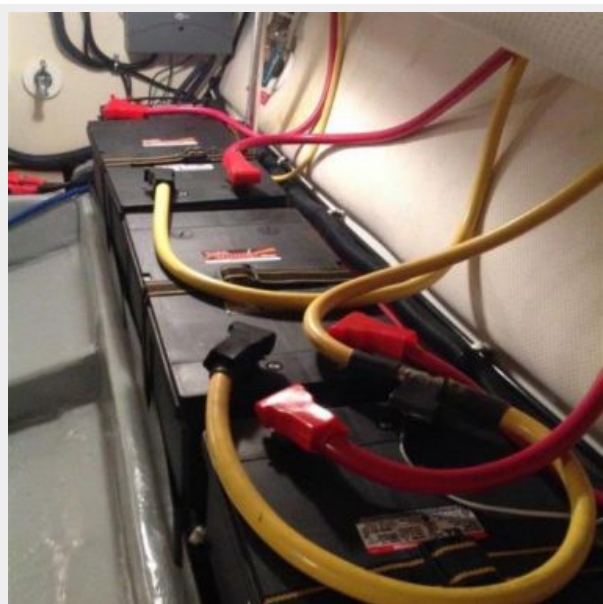


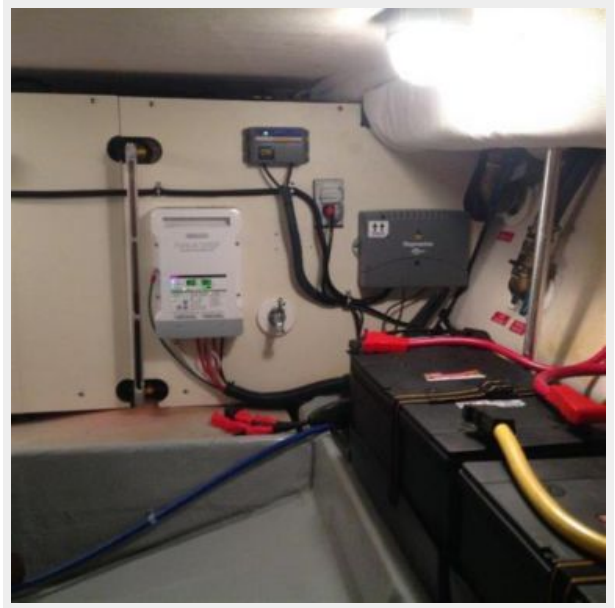
















КОНТАКТЫ

Андрей Шестаков (Andrey Shestakov) – ведущий яхтенный брокер отдела продаж яхт и судов компании Shestakov Yacht Sales Inc. Официальный представитель Shestakov Yacht Sales Inc. для русскоговорящих клиентов в центральном офисе компании в Майами/Форт Лодердейл/Флорида/США.

Контактная информация

Email: andrey@shestakovyachtsales.com

Web: shestakovyachtsales.com

Телефоны

Краснодарский край: **+7(918)465-66-44**

США, Майами, Флорида: **+1(954)274-4435**

Время работы

Понедельник – Суббота: **9:00 - 21:00**
EDT

Воскресенье: **Закрыто**

Адрес



Harbour Towne Marina, 850 NE 3rd St,
STE 213, Dania, FL 33004