

GOLDEN TOUCH — WESTSHIP/WESTPORT



Builder: WESTSHIP/WESTPORT

Year Built: 1992

Model: Motor Yacht

Price: PRICE ON APPLICATION

Location: United States

LOA: 98' 0" (29.87m)

Beam: 23' 6" (7.16m)

Min Draft: 5' 6" (1.68m)

Max Draft: 5' 8" (1.73m)

Cruise Speed: 16 Kts. (18 MPH)

Max Speed: 18 Kts. (21 MPH)

Our experienced yacht broker, Andrey Shestakov, will help you choose and buy a yacht that best suits your needs **GOLDEN TOUCH — WESTSHIP/WESTPORT** from our catalogue. Presently, at Shestakov Yacht Sales Inc., we have a wide variety of yachts available on our sale's list. We also work in close contact with all the big yacht manufacturers from all over the world.

If you would like to buy a yacht **GOLDEN TOUCH — WESTSHIP/WESTPORT** or would like help answering any questions concerning purchasing, selling or chartering a yacht, please call **+1(954)274-4435**

TABLE OF CONTENTS

TABLE OF CONTENTS	2
SPECIFICATIONS	3
Overview	3
Basic Information	3
Dimensions	3
Speed, Capacities and Weight	4
Accommodations	4
Hull and Deck Information	4
Engine Information	4
DETAILED INFORMATION	5
FLYBRIDGE & BOAT DECK	5
MAIN DECK	5
ACCOMODATIONS	6
Pilot House	6
EXTERIOR & DECKS	7
Engine Room & Mechanical Equipment	7
Exclusions	7
Disclaimer	8
PHOTOS	9
CONTACTS	22
Contact details	22
Telephones	22
Office hours	22
Address	22

SPECIFICATIONS

Overview

PRICE DROP OF \$200 K - TO \$1,950,000!

Owners have purchased a larger yacht but will work with buyer to continue profitable charter program

RECENT REFIT: New paint, completely new country kitchen, new wood floors, new cabinets, and many other upgrades. 2008 refit of \$300,000 + 2013-14 refit of over \$800,000. Only model with enclosed F/B, with hardtop and sky lounge with seating for 14 people. New carpet also installed in 3/2016. 8 - 2' X 4' oversized port lights in all the staterooms make for a comfortable feeling below. Jacuzzi on boat deck, with lounging area for 8-10 guests. Engines overhauled (zero timed) + complete AwlGrip paint job and many other upgrades.

Basic Information

Category: Motor Yacht

Model Year: 1992

Year Built: 1992

Country: United States

Dimensions

LOA: 98' 0" (29.87m)

LWL: 90' 0" (27.43m)

LOD: 88' 0" (26.82m)

Beam: 23' 6" (7.16m)

Min Draft: 5' 6" (1.68m)

Max Draft: 5' 8" (1.73m)

Clearance: 32' 0" (9.75m)

MFG Length: 98' 3" (29.95m)

Speed, Capacities and Weight

Cruise Speed: 16 Kts. (18 MPH)

Cruise Speed RPM: 1950 Kts.

Max Speed: 18 Kts. (21 MPH)

Max Speed RPM: 2300 Kts.

Displacement: 126000 Pounds

Water Capacity: 755 Gallons

Holding Tank: 440 Gallons

Fuel Capacity: 4500 Gallons

Accommodations

Total Cabins: 4

Total Berths: 9

Total Heads: 8

Hull and Deck Information

Hull Material: Fiberglass

Engine Information

Engines: 2

Manufacturer: Detroit Diesel

Model: 12-V-92 - TA

Engine Type: Inboard

Fuel Type: Diesel

DETAILED INFORMATION

FLYBRIDGE & BOAT DECK

The FLYBRIDGE is accessed by a stairway from the PILOT HOUSE, and features waterproof and sunlight viewable monitoring/control touchscreens for the newly installed electronics, which include, among a host of other equipment, a back-up Furuno radar, depth sounder, and chart-nav unit.

There are wing stations port and starboard, and the enclosed bridge has undergone a total refit to transform the FLYBRIDGE to a SKYLounge, with a large, curved bar with four barstools on the port side. On the starboard side is an L-shaped seating area which serves well for dining, as well as morning coffee, while watching everything from the top of the yacht.

Through a glass door, you go aft onto the large, open BOAT DECK, which has a new Nautical Structures davit on the port side, to lift the JetSkis and toys off for fun in the sun. There is also a Pipewelders soft Bimini top to provide shade for cruising and dining.

MAIN DECK

ENTRANCE DOORS are located Port and Starboard Mid-Ship, but let's begin at ...

THE **AFT DECK** is approximately 9 feet by 22 feet and has a teak deck with lounge furniture, ottoman, and a wet bar, making a perfect spot for watching the activity in the cockpit, and just enjoying the cruise.

From the AFT DECK, there is a ladder to the FLYBRIDGE/BOAT DECK via a newly installed hatch.

The COCKPIT is just a few steps down, and is designed for fishing, diving, grilling, and just fun. There is a Jenn-Aire Grill, Rod Holders for fishing, a control station, and plenty of storage under the teak deck. Through a transom door, there is access to the large SWIM PLATFORM. There are two warping winches, one each port and starboard to assist in docking and towing a smaller boat (not included). A 100 gallon gas tank supplies gas, and there is a hose that can supply diesel to fill other small boats.

The MAIN SALON is just forward of the AFT DECK through a glass door. On the starboard side, as you enter from the AFT DECK, is a large L-shaped settee; forward, and to port is a curved bar, with a granite top that seats four. Just forward of the bar is the formal dining area, which seats eight.

The MAIN DECK has light ash paneling and trim, with neutral colors and accents provided in the pillows, rugs and accessories.

The POWDER ROOM is on the left as you walk forward through the starboard passageway toward the ...

COUNTRY KITCHEN, which is a large, open, well-lit area that combines the GALLEY and the DINETTE. The GALLEY has been recently upgraded with new appliances (Kitchen-Aid and other) quality brands. The wood floors provide a nice contrast to the bright GALLEY cabinetry, with in white Corian tops, as well as the and SETTEE dining area, with its large oval Corian-topped table.

ACCOMODATIONS

The **CREW QUARTERS** are accessed by going down a curved stairway on the forward starboard side of the COUNTRY KITCHEN. At the bottom of the stairs, and to port, is the captain's stateroom, which has a head and a double berth, with drawers, closet, and storage space. At the forward end of the CREW QUARTERS is V-berth for additional crew of two, with a separate head and shower, closet, and storage space.

The MASTER & GUEST STATEROOMS are accessed from a curved stairway on the port, forward side of the MAIN SALON. At the bottom of the stairs is a comfortable foyer, off of which are the MASTER STATEROOM, to forward, and the PORT and STARBOARD GUEST STATEROOMS, as you go aft.

The full-beam MASTER STATEROOM has a king-sized berth, located on the center of the forward bulkhead, which is upholstered from the berth to the ceiling, with white ash night stands on each side. The starboard side features a built-in settee, cabinet, and vanity, while the port side has a full-length custom built-in white ash dresser. There is also a large walk-in closet, refrigerator, and a complete stereo system.

Forward of the master berth, with doors on the port and starboard sides, are the HIS & HERS HEADS, which are separated by a spacious shower, with glass shower doors on each side to give added privacy. Mirrors are above each of the marble-topped vanities, and custom fixtures and faucets give these twin bathrooms a luxurious feel.

The STARBOARD GUEST STATEROOM is aft and has a queen-size berth, with dresser, storage, closet, and a full en-suite bath, with a marble-topped vanity.

Across the hall to port is the PORT GUEST STATEROOM, which has twin berths, dresser, storage, closet, and an en-suite bath, with a marble-topped vanity.

Pilot House

The PILOT HOUSE is accessible from the same port side hallway that provides access to the lower master & guest accommodations, as well as access from the starboard companionway. There is great visibility, with the latest in electronics built in to the consoles at the helm. There is

one helm seat and a settee on the starboard side with a table and seating for four, and is a great place to observe the journey while you enjoy morning coffee or lunch.

EXTERIOR & DECKS

The EXTERIOR of "GOLDEN TOUCH," including the decks, were painted with AwlGrip in 2013. The EXTERIOR decks were finished in a non-skid surface.

Engine Room & Mechanical Equipment

The ENGINE ROOM is aft of the ACCOMMODATIONS, and is accessed from a centerline door at the forward bulkhead of the COCKPIT, and down a few steps to a room dedicated to the housing of the electrical distribution equipment, including the two 25 KVA Isolation Transformers, the two 100amp single phase shore power inlets.

From there, you proceed forward to a captain's stateroom, with a separate head and shower, located on the port side, with a complete laundry room, with washer and dryer, linen storage, folding table, etc. on the starboard side.

At the forward bulkhead of the captain's stateroom and laundry room, and through a watertight door, is the full-height ENGINE ROOM.

The two 36 kW Northern Lights generators are located port and starboard, just aft of the main engines, which allows easy access for maintenance of the gen sets and the mains.

Other MECHANICAL EQUIPMENT includes:

- * Marine-Air Chilled Water Air Conditioning system (180,000 BTU capacity)
- * Westmar 40 HP bow thruster
- * Naiad 301 stabilizers (rebuilt and serviced in 2015)
- * Hynautic hydraulic power steering system
- * One 50 amp 24-volt battery charger
- * One 30 amp 12-volt battery charger

Exclusions

Owner's personal belongings.

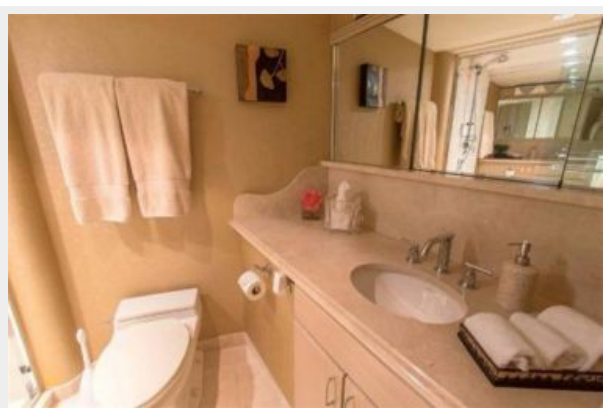
Disclaimer

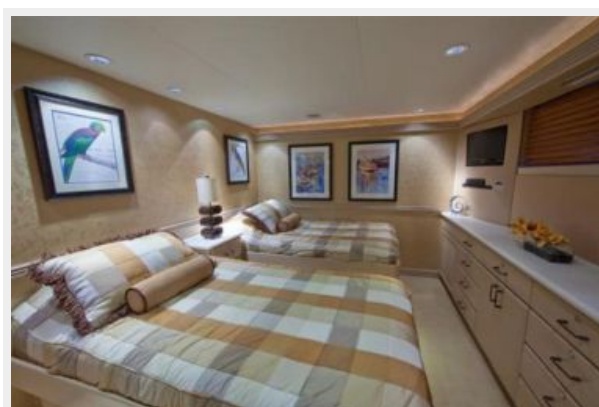
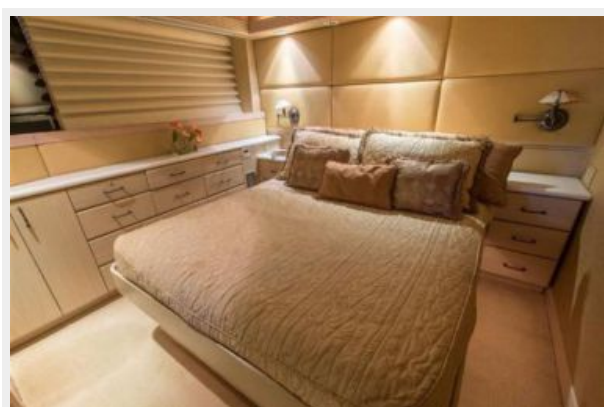
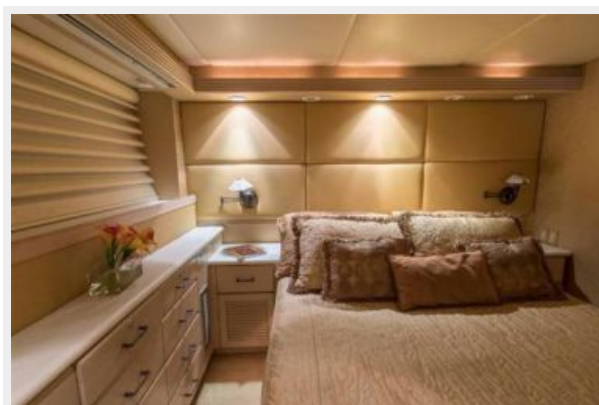
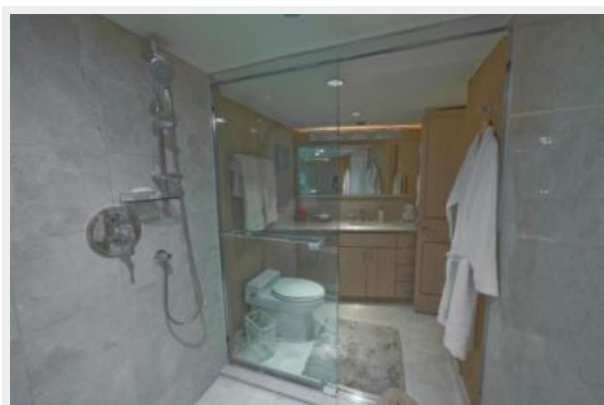
The Company offers the details of this vessel or yacht in good faith but cannot guarantee or warrant the accuracy of this information nor warrant the condition of the vessel. A buyer should instruct his representatives, agents, or his surveyors, to investigate such details as the buyer desires validated. This vessel or yacht is offered subject to prior sale, price change, or withdrawal without notice.

PHOTOS







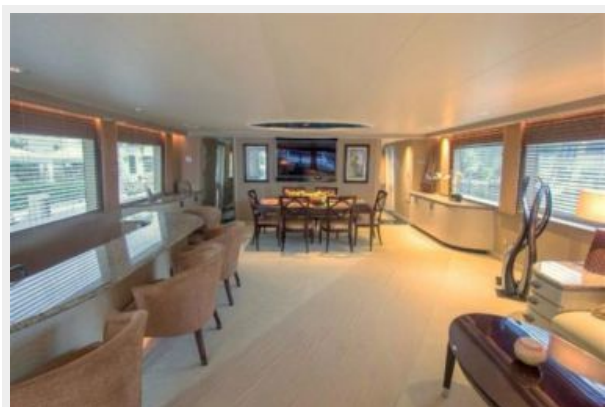


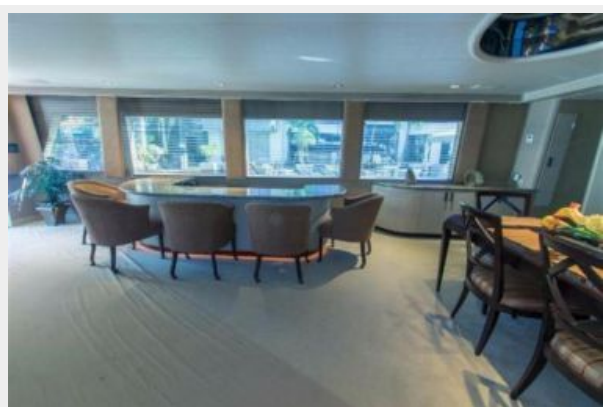


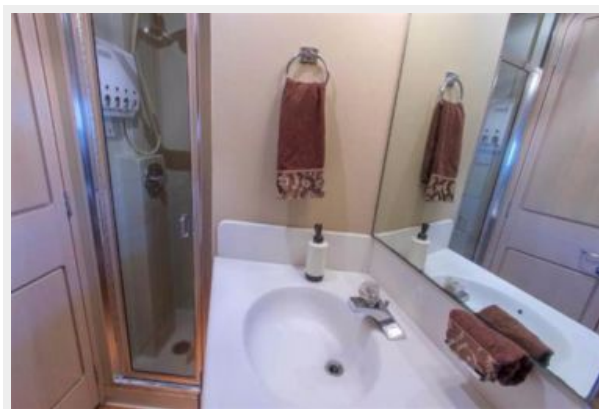




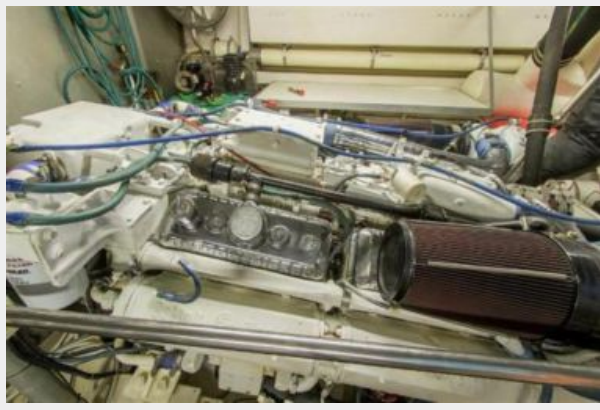












CONTACTS

Andrey Shestakov, leading yacht broker of the sales department of Shestakov Yacht Sales Inc. Shestakov Yacht Sales Inc., the official representative of the Miami/Fort Lauderdale FL headquarters.

Contact details

Email: **andrey@shestakovyachtsales.com**

Web: shestakovyachtsales.com/en/

Telephones

USA: **+1(954)274-4435**

Office hours

Monday – Saturday: **9:00 - 21:00 EDT**

Sunday: **closed**

Address



Harbour Towne Marina, 850 NE 3rd St,
STE 213, Dania, FL 33004