

TIKI MOANA — GRAND BANKS



Судостроитель: GRAND BANKS

Год постройки: 1998

Модель: Траулер

Цена: **ЦЕНА ЯХТЫ ПО ЗАПРОСУ**

Местонахождение: United States

Длина общая: 36' 0" (10.97m)

Ширина: 12' 8" (3.86m)

Мин. осадка: 4' 0" (1.22m)

Макс. осадка: 4' 0" (1.22m)

Крейс. скорость: 8 Kts. (9 MPH)

Макс. скорость: 10 Kts. (12 MPH)

Купить Tiki Moana — GRAND BANKS а также выбрать подходящую вам яхту из нашего каталога яхт вам поможет опытный яхтенный брокер Андрей Шестаков. На сегодняшний день компания Shestakov Yacht Sales Inc. имеет большое количество яхт в собственном списке продаж, а также тесно сотрудничает со всеми крупными яхтенными производителями по всему миру.

Для того чтобы купить яхту Tiki Moana — GRAND BANKS а также проконсультироваться по любому вопросу связанному с покупкой, продажей, чартером яхт позвоните по телефону **+7(918)465-66-44**.

ОГЛАВЛЕНИЕ

ОГЛАВЛЕНИЕ	2
ХАРАКТЕРИСТИКИ	5
Обзор	5
Основная информация	5
Размеры	5
Скорость, вместимость и масса	5
Размещение	6
Корпус и палуба	6
Информация о двигателе	6
ПОДРОБНОЕ ОПИСАНИЕ	7
1998 Grand Banks 38 Classic Tiki Moana Walkthrough	7
1998 Grand Banks 36 Tiki Moana Accommodations	7
1998 Grand Banks 36 Tiki Moana Helm Stations	7
1989 Grand Banks Tiki Moana Galley and Dining	8
1998 Grand Banks 38 Tiki Moana deck	9
1998 Grand Banks 38 Engine, mechanical, electrical	10
1998 Grand Banks 36 Upgrades and Replacements	10
Disclimer	11
Исключения	11
Отказ от ответственности	11
ФОТОГРАФИИ	12
1998 Grand Banks 36 Classic Tiki Moana Grand Banks nomenclature	12
1998 Grand Banks 36 Classic Tiki Moana port stern quarter	12
1998 Grand Banks 36 Classic Tiki Moana starboard stern quarter	12
1998 Grand Banks 36 Classic Tiki Moana stern full view	13
1998 Grand Banks 36 Classic Tiki Moana dingy view	13
1998 Grand Banks 36 Classic Tiki Moana looking forward starboard side	13
1998 Grand Banks 36 Classic Tiki Moana foredeck with covers	13

1998 Grand Banks 36 Classic Tiki Moana anchor windlass	14
1998 Grand Banks 36 Classic Tiki Moana view from the bridge	14
1998 Grand Banks 36 Classic Tiki Moana starboard side looking forward	14
1998 Grand Banks 36 Classic Tiki Moana pulpit plug in and foot switches	14
1998 Grand Banks 36 Classic Tiki Moana stern view	15
1998 Grand Banks 36 Classic Tiki Moana stern view close	15
998 Grand Banks 36 Classic Tiki Moana step plate	15
1998 Grand Banks 36 Classic Tiki Moana lazarette and wash down	15
1998 Grand Banks 36 Classic Tiki Moana open lazarette	15
1998 Grand Banks 36 Classic Tiki Moana stern view from bridge	15
1998 Grand Banks 36 Classic Tiki Moana dingy outboard	16
1998 Grand Banks 36 Classic Tiki Moana dingy	16
1998 Grand Banks 36 Classic Tiki Moana bridge view	16
1998 Grand Banks 36 Classic Tiki Moana helm and electronics	16
1998 Grand Banks 36 Classic Tiki Moana electronics cabinet	16
1998 Grand Banks 36 Classic Tiki Moana helm seating	16
1998 Grand Banks 36 Classic Tiki Moana ships bell.	17
1998 Grand Banks 36 Classic Tiki Moana passenger seating	17
1998 Grand Banks 36 Classic Tiki Moana port side door	17
1998 Grand Banks 36 Classic Tiki Moana open stern hatch	17
1998 Grand Banks 36 Classic Tiki Moana lower helm	18
1998 Grand Banks 36 Classic Tiki Moana galley	18
1998 Grand Banks 36 Classic Tiki Moana 3 burner stove	18
1998 Grand Banks 36 Classic Tiki Moana bar	18
1998 Grand Banks 36 Classic Tiki Moana salon with table down	19
1998 Grand Banks 36 Classic Tiki Moana salon with table up	19
1998 Grand Banks 36 Classic Tiki Moana master access and standing locker	19
998 Grand Banks 36 Classic Tiki Moana master bureau	19
1998 Grand Banks 36 Classic Tiki Moana master double berth	20

1998 Grand Banks 36 Classic Tiki Moana master port single berth	20
1998 Grand Banks 36 Classic Tiki Moana forward head.	20
1998 Grand Banks 36 Classic Tiki Moana master shower	20
1998 Grand Banks 36 Classic Tiki Moana v berth access	21
1998 Grand Banks 36 Classic Tiki Moana forard v berth	21
1998 Grand Banks 36 Classic Tiki Moana forward hanging locker	21
1998 Grand Banks 36 Classic Tiki Moana forward v berth window	21
1998 Grand Banks 36 Classic Tiki Moana master head	22
1998 Grand Banks 36 Classic Tiki Moana forward head shower	22
1998 Grand Banks 36 Classic Tiki Moana port hour meter	22
1998 Grand Banks 36 Classic Tiki Moana starboard hour meter	22
1998 Grand Banks 36 Classic Tiki Moana electrical panel	23
1998 Grand Banks 36 Classic Tiki Moana engine access hatch	23
1998 Grand Banks 36 Classic Tiki Moana oil change label	23
1998 Grand Banks 36 Classic Tiki Moana engine name plate	23
1998 Grand Banks 36 Classic Tiki Moana engine space wiring	24
1998 Grand Banks 36 Classic Tiki Moana engine mounts	24
1998 Grand Banks 36 Classic Tiki Moana racor with pressure guage	24
1998 Grand Banks 36 Classic Tiki Moana fuel control valves	24
1998 Grand Banks 36 Classic Tiki Moana raw water filters	25
1998 Grand Banks 36 Classic Tiki Moana fuel tank access	25
КОНТАКТЫ	26
Контактная информация	26
Телефоны	26
Время работы	26
Адрес	26

ХАРАКТЕРИСТИКИ

Обзор

Tiki Moana is a very nice 1998 36 Grand Banks Classic. She is shed kept in fresh water, professionally maintained, and shows beautifully. Grand Banks Yachts has an outstanding reputation for constructing an instantly recognizable, and solid built vessel that has a wide following and long pedigree. The owners of Tiki Moana have thoughtfully maintained and upgraded her systems throughout their time of ownership. It is one of the nicest Grand Banks 36 Classics I have seen. With a 12 foot 6inch bridge clearance, custom hinged mast that allows for transit on the Erie Canal, and reliable, fuel efficient, Perkins M135 diesel engines, Tiki Moana is an outstanding vessel for the loop and should be on your short list of vessels to see and buy.

Основная информация

Тип судна: Траулер	Модельный год: 1998
Год постройки: 1998	Страна: United States
Верх: Bimini Top	Открытая палуба мостика: Да

Размеры

Длина общая: 36' 0" (10.97m)	Ширина: 12' 8" (3.86m)
Мин. осадка: 4' 0" (1.22m)	Макс. осадка: 4' 0" (1.22m)
Трапы: 12' 6" (3.81m)	

Скорость, вместимость и масса

Крейс. скорость: 8 Kts. (9 MPH)	Макс. скорость: 10 Kts. (12 MPH)
Водоизмещение: 27000 Pounds	Вместимость воды: 140 Gallons
Вместимость сточного бака: 40 Gallons	Объем топливного бака: 600 Gallons

Размещение

Всего кают: 2

Всего коек: 4

Всего ком. состава: 2

Корпус и палуба

Материал корпуса: Fiberglass

Комплектация корпуса: Modified V-Hull

Информация о двигателе

Двигатели: 2

Производитель: Perkins

Модель: M135

Тип двигателя: Inboard

Тип топлива: Diesel

ПОДРОБНОЕ ОПИСАНИЕ

1998 Grand Banks 38 Classic Tiki Moana Walkthrough

Board Tiki Moana along either stern quarter or by the swim platform. There is access to the lazarette on the stern deck. The side decks are wide and lead forward to the port and starboard side entry doors. Going forward, there are 3 closed stainless steel chocks and cleats. The anchor windlass with wildcat, capstain and foot controls is on the bow. The side doors open to the salon to starboard and the galley to port. The salon has a drop leaf table, L shaped setee, and large windows. Three steps aft lead down to the master stateroom with a twin bunk to port and a double bunk to starboard. The master head with separate shower is located to starboard, forward of the master berth. There is a door/hatch opening along the aft bulkhead for emergency exit and 4 large windows for natural lighting. Going forward from the salon is the lower helm to starboard and the steps leading to the forward v berth left of centerline. The forward v berth has an overhead escape hatch, 2 side windows, a hanging locker to port and the guest head with shower to starboard. Access to the chain locker is at the head of the v berth. The flybridge access is on the port side, aft of midship. The flybridge is large with built in back to back seating with under seat storage, bimini top, and helm station to starboard.

1998 Grand Banks 36 Tiki Moana Accommodations

The accommodations on Tiki Moana are comfortable, and well thought out. The aft master stateroom has the desirable full/ twin layout. The full/ twin layout allows for a wide open center space not normally found on 36 foot vessels and more under bunk storage than a queen berth.

There are 4 opening side lights with custom screens and curtains, Ocean Marine OCM On Board Climate Master thermostat control, a 6 drawer centerline bureau with desktop, reading lights, storage under each bunk, parquet floor, handsome joinery and cabinetry, aft hatch for separate access, vented standing locker, teak slatted walls, curtains, stool, and Xintex CMD-2M marine carbon monoxide detector. The forward v berth has 2 single berths, vented standing locker, separate thermostat control, under berth drawers and storage, 2 opening side lights with custom screens and curtains, overhead opening hatch, reading lamps, fine cabinetry and joinery, teak slatted walls, under step storage, parquet floor, and teak hand holds.

1998 Grand Banks 36 Tiki Moana Helm Stations

The helm stations on Tiki Moana have modern electronics that are integrated and capable of route planning and automatic pilot. There is a networked radar with chart overlay and pertinent gauges for engine performance monitoring. With a good combination of digital instruments, analog gauges, large compass, and weather instruments, proper vessel navigation is comfortable and assured. Lower helm features include:

- Furuno Navnet vx2 with 10 inch display

- Furuno Navnet radar
- Simrad AP11 autopilot
- Jensen MDC 9645W CD Stereo
- Analog barometer
- Analog ships clock
- Large Ritchie Compass
- Morse Engine Controls
- Generator amperage and voltage gauges
- Shore power switch
- Anchor windlass breaker and controls
- Amber alarm indicators
- Windshield washer switches
- Large ships wheel
- Excellent cabinetry with fiddles

The upper helm station is to starboard on the fly bridge and has comfortable seating and excellent visibility over the bow and good visibility on the starboard stern. The electronics match the lower helm and data is passed through network cables. Features include:

- Furuno Navnet vx2 10 inch display
- Furuno RD-30 depth indicator
- Interphase Twin Scope forward looking sonar
- Icom VHF
- Loud hailer
- ACR RCL-75 Remote spotlight control
- Wooden ships wheel
- Morse Engine Controls
- Engine monitoring gauges
- Large Ritchie Compass
- Amber engine alarms

1989 Grand Banks Tiki Moana Galley and Dining

The galley on Tiki Moana is on the main level adjacent to the salon. It is well lit and does not separate the cook from the crowd. It has clever ideas such as slide out cutting board heavy duty hinges and latch, and a wood covered refrigerator door. Features include:

- 3 burner Princess electric stove with oven and cutting board top
- Stainless steel sink
- Solid surface counter top
- Fine custom cabinetry and joinery
- Fiddles along the counter tops
- DeLonghi Perfect microwave oven
- Large opening windows for natural lighting

- Venetian blinds and curtains for privacy
- Water filter attached to the spigot
- Dometic CR-1110 refrigerator

The salon table has two drop leaves for dining and the table has the flip over cup holders built in. The L shaped settee has room for 3 and the bench seat rounds out a very comfortable dining setup for 4. There is a Magna grill on the stern deck and room on the fly bridge for cocktails and dinner. The salon has a rounded L shaped settee covered in blue buttoned fabric trimmed out in teak. The fabric is in very good condition and shows little sign of fading. There is a Samsung flat screen television, a Jensen CD stereo, and Bose speakers. There is a thermostat control along the aft bulkhead. There are window lights outboard and aft providing ample natural light. Venetian blinds provide privacy and the forward end table/ bar is a well thought out feature. The bulkheads are teak veneer, and the floors are parquet.

1998 Grand Banks 38 Tiki Moana deck

The decks of Tiki Moana are wide and sure footed with the low maintenance options of stainless steel handrails and fiberglass decks. Other features include:

- Full set of custom covers for all windows, doors, teak hatches, toe rails, and transom
- Custom nosee-um screens for all windows and hatches
- Full bridge enclosure (stored since new)
- Rocna Vulcan 44 lb anchor and 150 feet of marked chain
- Lofrans 12 volt 1000 watt Tigres anchor windlass with capstain, wildcat, large top cleat and cover
- Bow pulpit with stainless steel rail and 2 anchor openings
- Closed stainless steel chocks and cleats
- Custom block and fall for one person mast lowering
- Spot light
- Loud hailer
- Gaff with electric winch for the rhib
- 12 foot Zodiac rhib with 9.9 Tohatsu outboard
- Ships bell
- Large stern deck lazarette
- Life sling and throw ring
- Swim platform
- Aft shower valves
- Stern shore power outlets
- Bimini top
- Grand Banks step plate at entry
- Well placed hand holds and grab rails
- Bow pulpit shore power outlet and foot controls

1998 Grand Banks 38 Engine, mechanical, electrical

- The engine and mechanical spaces on Tiki Moana are clean and neat. The bilges are clean and show no oil residue. All maintenance is done professionally and records are available. Features include:
 - 2 Perkins M135 main engines with 1598 hours starboard and 1599 hours port
 - Annual fuel, oil and filter, impeller changes and oil analysis on the main engines
 - Racor fuel filter with vacuum gauges
 - Stainless steel shafts
 - Spur line cutters
 - Custom teak grates
 - Centralized fuel control valves
 - Fuel tank access from galley floor
 - Multiple floor hatches for engine access
 - 3 Ocean Marine reverse cycle air conditioning units: Aft 12000 BTU, Salon 12000 BTU, Forward 10000 BTU
 - 10 gallon water heater
 - Y valve for overboard discharge control
 - 2 70 gallon food grade polyethylene water tanks (2016)
 - Mase 8 kw 3 cylinder generator with 200 hours
 - Promatic 50-3 battery charger
 - Neat, labeled wiring
 - Breaker panel adjacent to lower helm with battery switches, 12 volt and 110 volt breakers
 - Reliable cable steering

1998 Grand Banks 36 Upgrades and Replacements

Tiki Moana has been constantly upgraded by its current owners. 2013

- Custom pulley system for 1 man mast lowering
- Replaced steering cable
- Replaced teak swim platform
- New Furuno Navnet vx2 10 inch upper and lower station

2016

- Rocna Vulcan 44lb anchor
- Greased and serviced all sea clocks
- Replaced port and starboard oil pressure sending units
- Replaced corroded water tanks with 2 70 gallon custom food grade polyethylene tanks
- Custom NoSee-Um screens all windows and hatches

2017

- Replaced generator raw water pump and exhaust gas mixing elbow
- Replaced port shaft couplet (starboard replaced previously)
- Replaced starboard shaft packing
- Replaced port and starboard cutlass bearings
- Replaced port and starboard transmission savers
- Checked and corrected alignment port and starboard drive systems
- Lapped props and serviced spur line cutters port and starboard
- Repaired minor (non structural) gel coat chips on the keel
- Stripped and refinished brightwork including interior doors

Disclaimer

The Company offers the details of this vessel in good faith but cannot guarantee or warrant the accuracy of this information nor warrant the condition of the vessel. A buyer should instruct his agents, or his surveyors, to investigate such details as the buyer desires validated. This vessel is offered subject to prior sale, price change, or withdrawal without notice.

Исключения

При продаже яхты исключаются личные вещи владельца.

Отказ от ответственности

Компания предоставляет описание судна или яхты добросовестно, но не может гарантировать точность этой информации, а также не ручается за техническое состояние. Покупатель должен проинструктировать своих агентов или оценщиков исследовать представленную информацию более подробно, по собственному желанию. Продажа судна или яхты, изменение цены или снятие с продажи будет происходить без предварительного уведомления.

ФОТОГРАФИИ



**1998 Grand Banks 36 Classic Tiki Moana
Grand Banks nomenclature**



**1998 Grand Banks 36 Classic Tiki Moana
port stern quarter**



**1998 Grand Banks 36 Classic Tiki Moana
starboard stern quarter**



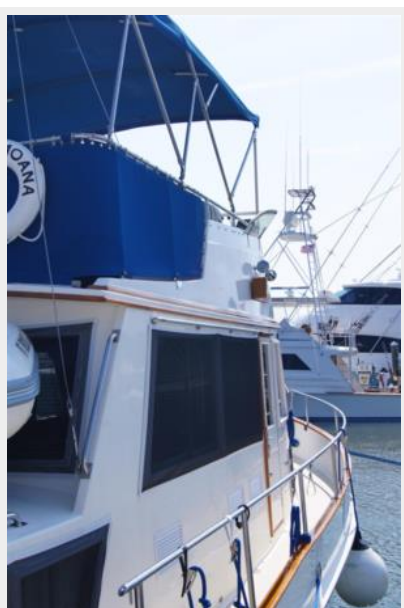
**1998 Grand Banks 36 Classic Tiki Moana
stern full view**



**1998 Grand Banks 36 Classic Tiki Moana
dingy view**



**1998 Grand Banks 36 Classic Tiki Moana
looking forward starboard side**



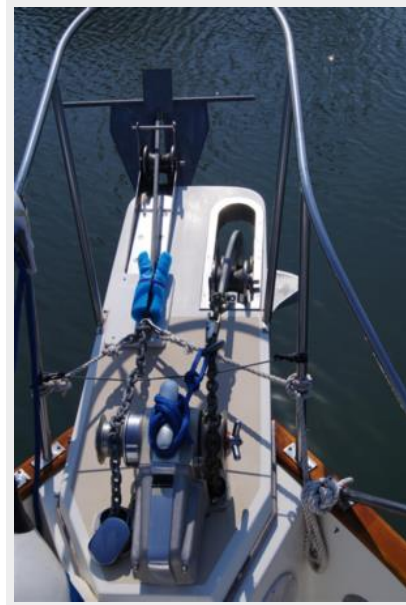
**1998 Grand Banks 36 Classic Tiki Moana
foredeck with covers**



**1998 Grand Banks 36 Classic Tiki Moana
view from the bridge**



**1998 Grand Banks 36 Classic Tiki Moana
anchor windlass**



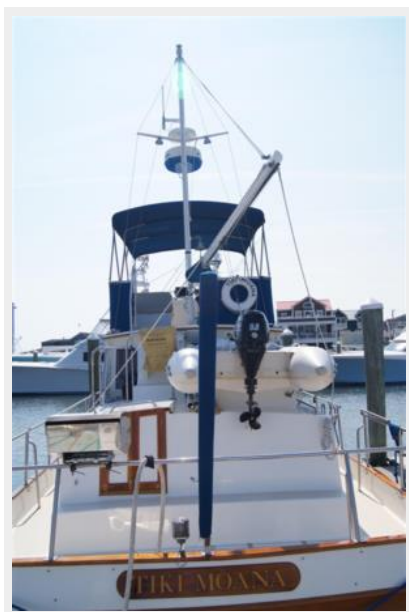
**1998 Grand Banks 36 Classic Tiki Moana
pulpit plug in and foot switches**



**1998 Grand Banks 36 Classic Tiki Moana
starboard side looking forward**



**1998 Grand Banks 36 Classic Tiki Moana
stern view**



**1998 Grand Banks 36 Classic Tiki Moana
stern view close**



**1998 Grand Banks 36 Classic Tiki Moana step
plate**



**1998 Grand Banks 36 Classic Tiki Moana
lazzarette and wash down**



**1998 Grand Banks 36 Classic Tiki Moana
open lazarette**



**1998 Grand Banks 36 Classic Tiki Moana
stern view from bridge**



1998 Grand Banks 36 Classic Tiki Moana dingy



1998 Grand Banks 36 Classic Tiki Moana dingy outboard



1998 Grand Banks 36 Classic Tiki Moana bridge view



1998 Grand Banks 36 Classic Tiki Moana helm and electronics



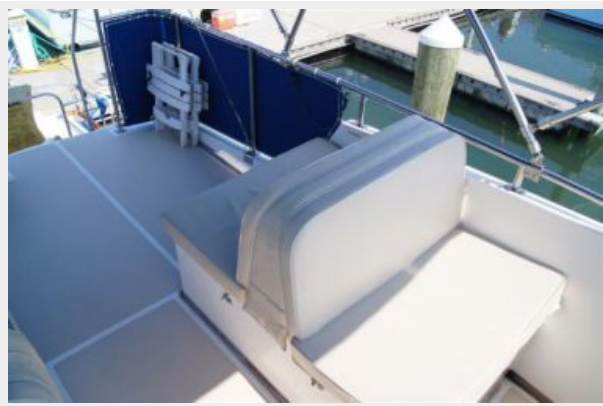
1998 Grand Banks 36 Classic Tiki Moana electronics cabinet



1998 Grand Banks 36 Classic Tiki Moana helm seating



**1998 Grand Banks 36 Classic Tiki Moana
passenger seating**



**1998 Grand Banks 36 Classic Tiki Moana
ships bell.**



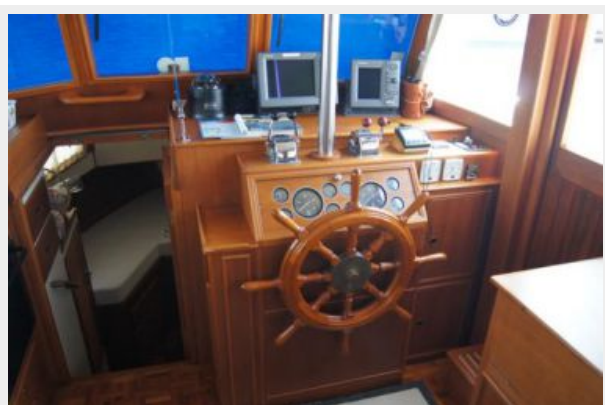
**1998 Grand Banks 36 Classic Tiki Moana
open stern hatch**



**1998 Grand Banks 36 Classic Tiki Moana
port side door**



**1998 Grand Banks 36 Classic Tiki Moana
lower helm**



**1998 Grand Banks 36 Classic Tiki Moana
galley**



**1998 Grand Banks 36 Classic Tiki Moana 3
burner stove**



1998 Grand Banks 36 Classic Tiki Moana bar



**1998 Grand Banks 36 Classic Tiki Moana
salon with table down**



**1998 Grand Banks 36 Classic Tiki Moana
salon with table up**



**1998 Grand Banks 36 Classic Tiki Moana
master access and standing locker**



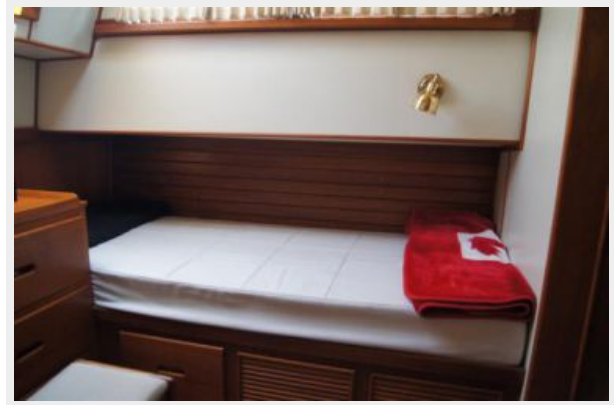
**1998 Grand Banks 36 Classic Tiki Moana
master bureau**



**1998 Grand Banks 36 Classic Tiki Moana
master double berth**



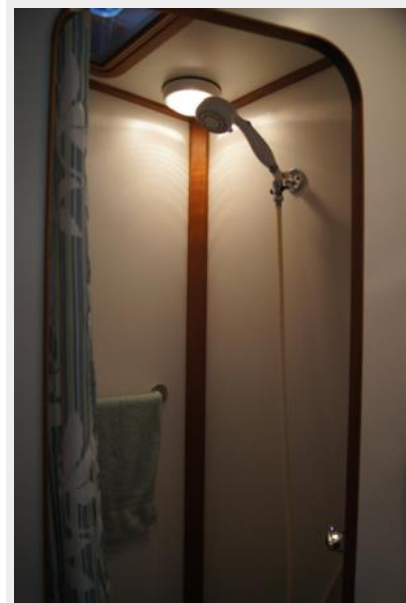
**1998 Grand Banks 36 Classic Tiki Moana
master port single berth**



**1998 Grand Banks 36 Classic Tiki Moana
forward head.**



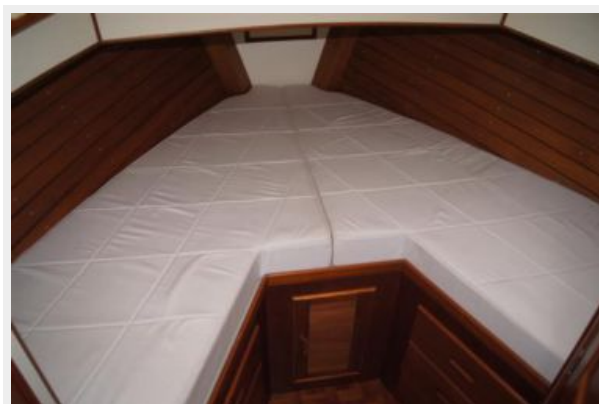
**1998 Grand Banks 36 Classic Tiki Moana
master shower**



**1998 Grand Banks 36 Classic Tiki Moana v
berth access**



**1998 Grand Banks 36 Classic Tiki Moana
forard v berth**



**1998 Grand Banks 36 Classic Tiki Moana
forward v berth window**



**1998 Grand Banks 36 Classic Tiki Moana
forward hanging locker**



**1998 Grand Banks 36 Classic Tiki Moana
master head**



**1998 Grand Banks 36 Classic Tiki Moana
forward head shower**



**1998 Grand Banks 36 Classic Tiki Moana
port hour meter**



**1998 Grand Banks 36 Classic Tiki Moana
starboard hour meter**



**1998 Grand Banks 36 Classic Tiki Moana
electrical panel**



**1998 Grand Banks 36 Classic Tiki Moana
engine access hatch**



**1998 Grand Banks 36 Classic Tiki Moana oil
change label**



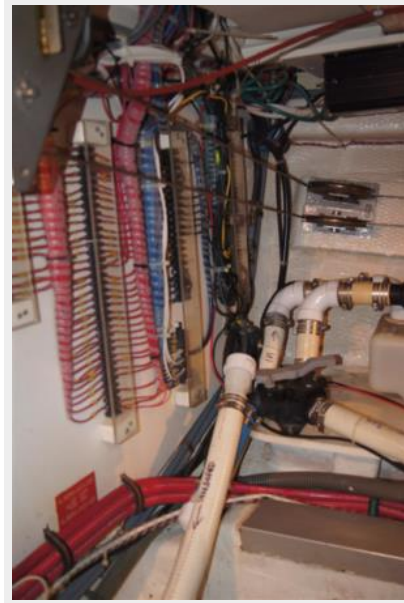
**1998 Grand Banks 36 Classic Tiki Moana
engine name plate**



1998 Grand Banks 36 Classic Tiki Moana engine mounts



1998 Grand Banks 36 Classic Tiki Moana engine space wiring



1998 Grand Banks 36 Classic Tiki Moana fuel control valves



1998 Grand Banks 36 Classic Tiki Moana racor with pressure gauge



**1998 Grand Banks 36 Classic Tiki Moana
raw water filters**



**1998 Grand Banks 36 Classic Tiki Moana
fuel tank access**



КОНТАКТЫ

Андрей Шестаков (Andrey Shestakov) – ведущий яхтенный брокер отдела продаж яхт и судов компании Shestakov Yacht Sales Inc. Официальный представитель Shestakov Yacht Sales Inc. для русскоговорящих клиентов в центральном офисе компании в Майами/Форт Лодердейл/Флорида/США.

Контактная информация

Email: andrey@shestakovyachtsales.com

Web: shestakovyachtsales.com

Телефоны

Краснодарский край: **+7(918)465-66-44**

США, Майами, Флорида: **+1(954)274-4435**

Время работы

Понедельник – Суббота: **9:00 - 21:00**
EDT

Воскресенье: **Закрето**

Адрес



Harbour Towne Marina, 850 NE 3rd St,
STE 213, Dania, FL 33004