

## AISLING — YOUNG SUN



**Builder:** YOUNG SUN

**Year Built:** 1986

**Model:** Cruising Sailboat

**Price:** PRICE ON APPLICATION

**Location:** United States

**LOA:** 35' 0" (10.67m)

**Beam:** 11' 0" (3.35m)

**Max Draft:** 5' 5" (1.65m)

Our experienced yacht broker, Andrey Shestakov, will help you choose and buy a yacht that best suits your needs **Aisling — YOUNG SUN** from our catalogue. Presently, at Shestakov Yacht Sales Inc., we have a wide variety of yachts available on our sale's list. We also work in close contact with all the big yacht manufacturers from all over the world.

If you would like to buy a yacht **Aisling — YOUNG SUN** or would like help answering any questions concerning purchasing, selling or chartering a yacht, please call **+1(954)274-4435**

---

# TABLE OF CONTENTS

---

TABLE OF CONTENTS	2
SPECIFICATIONS	3
Overview	3
Basic Information	3
Dimensions	3
Speed, Capacities and Weight	3
Accommodations	4
Hull and Deck Information	4
Engine Information	4
DETAILED INFORMATION	5
Accommodations	5
Galley	5
Mechanical	5
Electrical Equipment	5
Rigging	6
Deck Equipment	6
Electronics	7
Exclusions	7
Disclaimer	7
PHOTOS	9
CONTACTS	17
Contact details	17
Telephones	17
Office hours	17
Address	17

---

# SPECIFICATIONS

---

## Overview

---

Classic, rugged, full keeled double ender. "Aisling" is a Young Sun Westwind 35' staysail cutter designed for comfortable blue water cruising. The canoe stern with self steering wind vane and platform bowsprit offer both safety and convenience for handling this vessel. Built of solid glass construction with NO TEAK DECKS and freshly painted hull and decks. The interior gets excellent ventilation through the traditional butterfly hatch and features beautiful teak joinery with accommodations to sleep up to 6. The Yanmar diesel has been well maintained and fires easily. This is a nicely equipped vessel and is loaded with cruising gear, extras parts, and filters. Cruising gear includes: self steering wind vane, solar, wind generator, SSB, AIS, radar, Avon life raft, and EPIRB. Aisling underwent a refit in 2016 that included hull, and deck awlgrip painting, professional bottom painting, and new interior upholstery.

## Basic Information

---

**Category:** Cruising Sailboat

**Sub Category:** Cutter

**Model Year:** 1986

**Year Built:** 1986

**Country:** United States

## Dimensions

---

**LOA:** 35' 0" (10.67m)

**LWL:** 32' 0" (9.75m)

**Beam:** 11' 0" (3.35m)

**Max Draft:** 5' 5" (1.65m)

## Speed, Capacities and Weight

---

**Displacement:** 19200 Pounds

**Water Capacity:** 120 Gallons

**Holding Tank:** 30 Gallons

**Fuel Capacity:** 60 Gallons

---

## Accommodations

---

**Total Cabins:** 1

**Total Heads:** 1

---

## Hull and Deck Information

---

**Hull Material:** Fiberglass

---

## Engine Information

---

**Engines:** 1

**Manufacturer:** Yanmar

**Model:** 3QM30F

**Fuel Type:** Diesel

---

# DETAILED INFORMATION

---

## Accommodations

---

- From entry at the companionway you find the galley to port and a quarter berth with navigation desk to starboard
- The salon features a U-shaped settee to port and a bench settee to starboard
- The drop leaf dining table converts to double berth
- Teak cabinetry and book cases are behind and above seating and galley
- Brass opening ports and hatches provide plentiful light and airflow
- Private head and shower with ample hanging lockers opposite
- Forward there is a large double v-berth

## Galley

---

- Top loading 12V Isotherm refrigeration with side access door
- Propane 3- burner stove with oven
- Double stainless sink
- Ample storage overhead and behind stove
- Spacious wood counter top and prep area
- Teak dish bins behind sink
- Granite counter top around sink

## Mechanical

---

- 3QM30F Yanmar diesel
- KH18 Yanmar transmission
- Balmar alternator
- Racor 500 filtration
- Xintrex propane shutoff
- Fireboy CO2 monitor
- Pressurized Surflo aqua king pump and spare
- 1 Rule bilge pump with float switch
- 120 gallons water
- 60 gallons fuel
- 30 gallons holding with Y-valve
- Manual Jabsco Head

## Electrical Equipment

---

- 6 lifeline AGM batteries (approx. 2011)

- 85 watt solar panel
- KISS wind generator
- Sterling Procharge U battery charger
- Xantrex battery monitor
- Balmar voltage regulator ARS-5110V AC
- 12V DC
- Shore power cord

## Rigging

---

- Yankee, Staysail, Mainsail
- Original sails reconditioned and kept as spares
- Harken roller furling
- Cutter stay
- Aluminum boom and mast
- Lazy jacks
- Self tending staysail boom
- Jiffy reefing cam cleats with 2 reefs
- Boom gallows and boom vang
- 2 Lewmar 24 winches on mast
- Running rigging appears in good condition
- Standing rigging reported to be new in 2002
- Self tailing winches on cabin house: 1- Lewmar 16, 3- Lewmar 30
- Self tailing winches in cockpit: 2- Lewmar 43

## Deck Equipment

---

- Bow sprit with teak grate platform and bobstay
- CQR 35# with 100' 3/8" chain and 100' rode
- Delta 25# with 100' 3/8" chain and 100' rode
- Fortress 37# with storage bag
- Anchor wash down system
- Lofrans vertical manual windlass with chain gypsy and rode gypsy
- Dual anchor rollers
- Chainfall
- SS bow pulpit
- SS strike plate
- Lifelines with SS stanchions
- SS safety bars with belaying pins
- Non skid deck- NO Teak Decks
- Teak grab rails on raised cabin house
- 2016 awlgripped deck and hull

- Traditional butterfly hatch
- Large hatch over v-berth
- Dorade vents
- Bronze opening ports
- Wide walk arounds
- High gunnels with teack cap rail
- Bronze chocks
- Cleats
- BBQ bracket
- Dingy Outboard transport bracket
- Avon life raft (needs re-certification)
- EPIRB (needs re-certification)
- Suzuki DF-6 HP dingy outboard (approx 2003)
- MOB kit

---

## Electronics

---

- Voyager self steering windvane
- Simrad wheel pilot (older autopilot)
- St 1000 tiller pilot
- Comnav AIS transponder
- Raytheon radar
- Navman repeater
- Icom VHF M-602
- Icom SSB 7002
- Skymate satellite transceiver
- Lowrance GPS
- Furuno GPS
- Automatic VHF antennae splitter
- Xaxero weather fax USB
- Motorola TV satellite receiver
- Sirius satellite radio
- WinTV
- Pioneer stereo

---

## Exclusions

---

Owner's personal belongings.

---

## Disclaimer

---

The Company offers the details of this vessel or yacht in good faith but cannot guarantee or

warrant the accuracy of this information nor warrant the condition of the vessel. A buyer should instruct his representatives, agents, or his surveyors, to investigate such details as the buyer desires validated. This vessel or yacht is offered subject to prior sale, price change, or withdrawal without notice.

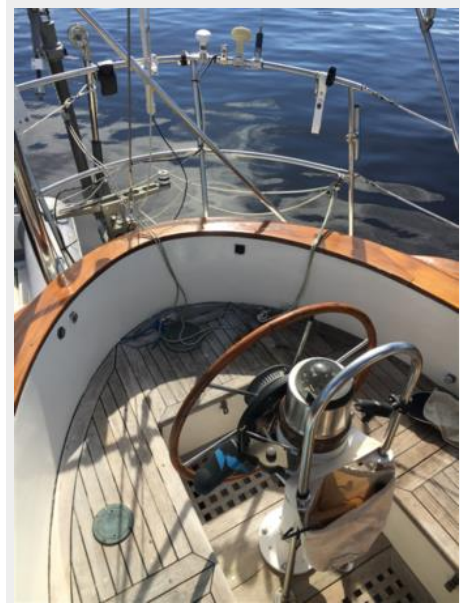


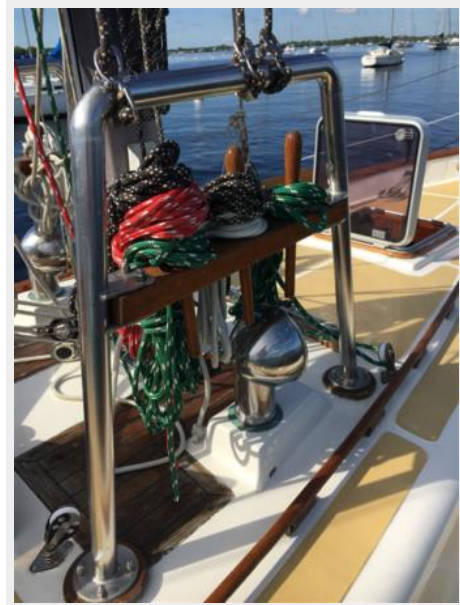
# PHOTOS

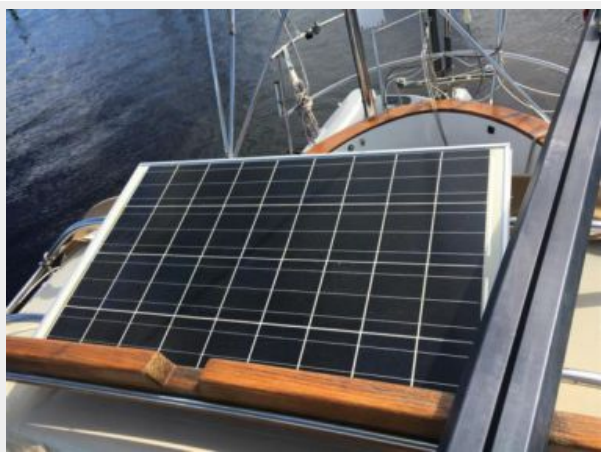
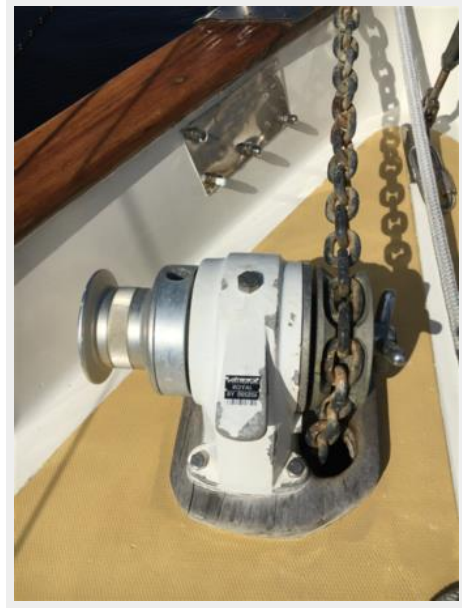


















# CONTACTS

---

Andrey Shestakov, leading yacht broker of the sales department of Shestakov Yacht Sales Inc. Shestakov Yacht Sales Inc., the official representative of the Miami/Fort Lauderdale FL headquarters.

## Contact details

---

Email: [andrey@shestakovyachtsales.com](mailto:andrey@shestakovyachtsales.com)

Web: [shestakovyachtsales.com/en/](http://shestakovyachtsales.com/en/)

## Telephones

---

USA: +1(954)274-4435

## Office hours

---

Monday – Saturday: **9:00 - 21:00** EDT

Sunday: **closed**

## Address

---



Harbour Towne Marina, 850 NE 3rd St,  
STE 213, Dania, FL 33004