

ENZO — OYSTER MARINE LTD



Судостроитель: OYSTER MARINE LTD

Год постройки: 2002

Модель: Крейсерская яхта

Цена: ЦЕНА ЯХТЫ ПО ЗАПРОСУ

Местонахождение: United States

Длина общая: 63' 4" (19.30m)

Ширина: 17' 8" (5.38m)

Мин. осадка: 8' 7" (2.62m)

Купить **ENZO — OYSTER MARINE LTD** а также выбрать подходящую вам яхту из нашего каталога яхт вам поможет опытный яхтенный брокер Андрей Шестаков. На сегодняшний день компания **Shestakov Yacht Sales Inc.** имеет большое количество яхт в собственном списке продаж, а также тесно сотрудничает со всеми крупными яхтенными производителями по всему миру.

Для того чтобы купить яхту **ENZO — OYSTER MARINE LTD** а также проконсультироваться по любому вопросу связанному с покупкой, продажей, чартером яхт позвоните по телефону **+7(918)465-66-44**.

ОГЛАВЛЕНИЕ

ОГЛАВЛЕНИЕ	2
ХАРАКТЕРИСТИКИ	5
Обзор	5
Основная информация	5
Размеры	6
Скорость, вместимость и масса	6
Размещение	6
Корпус и палуба	6
Информация о двигателе	6
ПОДРОБНОЕ ОПИСАНИЕ	7
INTRODUCTION	7
OVERVIEW	7
INTERIOR ACCOMMODATIONS	8
SALOON	8
STARBOARD FWD. CABIN	9
PORT GUEST CABIN	9
MIDSHIP GUEST/CREW CABIN	9
OWNER'S STATEROOM	9
ENTERTAINMENT	9
NAVIGATION CENTER	10
GALLEY	10
ELECTRONICS	10
MECHANICAL	11
ELECTRICAL	11
HULL	12
DECK	12
MAST and RIGGING	13
SAILS	13

WINCHES	13
CANVAS	13
SAFETY	14
EXCLUSIONS	14
Исключения	14
Отказ от ответственности	14
ФОТОГРАФИИ	15
Profile	15
Sailing	15
At Anchor	15
Sailing	15
At Anchor	16
Spinnaker	16
Cockpit	16
Cockpit, Looking Aft	16
Saloon	16
Dining Area	16
Galley, Looking Fwd.	17
Galley, Looking Aft	17
Owner's Stateroom	17
Owner's Stateroom	17
Owner's Ensuite Head	17
Port Guest Cabin	17
Port Guest Cabin	18
Stbd. Guest Cabin	18
Stbd. Guest Ensuite Head	18
Foredeck	18
At Anchor	18
Stern View	18

St. Lucia	19
Layout	19
КОНТАКТЫ	20
Контактная информация	20
Телефоны	20
Время работы	20
Адрес	20

ХАРАКТЕРИСТИКИ

Обзор

ENZO is a well-cared-for Oyster 62 featuring a four-cabin maple joinery interior capable of sleeping nine owners and guests.

Continually upgraded over the years -- most recently with a significant summer, 2017, refit by one of Maine's most reputable service yards -- ENZO not only looks new, but is "ready to go" for many seasons of sailing, with all new standing rigging, new teak decks, newly painted spars and more.

Summer 2017 Refit Highlights:

- The teak decks were removed and replaced with new from Teak Decking Systems
- All deck hardware was removed, polished and re-bedded
- Topsides and coach-roof were compounded and polished
- The mast, boom and spreaders were stripped and repainted with Awlgrip
- All standing wire rigging was replaced
- Inner forestay replaced
- Hydraulic backstay cylinders rebuilt
- Older hydraulic mainsail control hoses replaced
- Halyards were replaced.
- Genoa sheets replaced
- Reckmann furlers were serviced
- Major engine service
- Generator removed from boat and major service performed
- Bottom sanded and re-antifouled
- RIB and outboard serviced
- Bimini and dodger serviced
- Sails serviced

Основная информация

Тип судна: Крейсерская яхта

Подкатегория: Палубный парусник

Модельный год: 2002

Год постройки: 2002

Год обновления: 2017

Вид обновления: Engine, gen, decks, paint, rigging etc.

Страна: United States

Регистрационный номер: 1238924

Размеры

Длина общая: 63' 4" (19.30m)

Длина по ватерлинии: 54' 11" (16.74m)

Ширина: 17' 8" (5.38m)

Мин. осадка: 8' 7" (2.62m)

Скорость, вместимость и масса

Водоизмещение: 73854 Pounds

Вместимость воды: 383 Gallons

Объем топливного бака: 528 Gallons

Размещение

Всего кают: 4

Всего коек: 6

Спальные места: 9

Всего ком. состава: 3

Корпус и палуба

Материал корпуса: Fiberglass

Материал палубы: Teak

Комплектация корпуса: Other

Цвет корпуса: White

Отделка корпуса: Fiberglass

Дизайнер корпуса: Rob Humphreys

Информация о двигателе

Двигатели: 1

Производитель: Perkins

Модель: M225TI

Тип двигателя: Inboard

Тип топлива: Diesel

ПОДРОБНОЕ ОПИСАНИЕ

INTRODUCTION

ENZO is a well-cared-for Oyster 62 featuring a four-cabin maple joinery interior capable of sleeping nine owners and guests.

Continually upgraded over the years -- most recently with a significant summer, 2017, refit by one of Maine's most reputable service yards -- ENZO not only looks new, but is "ready to go" for many seasons of sailing, with all new standing rigging, new teak decks, newly painted spars and more.

Summer 2017 Refit Highlights:

- The teak decks were removed and replaced with new from Teak Decking Systems
- All deck hardware was removed, polished and re-bedded
- Topsides and coach-roof were compounded and polished
- The mast, boom and spreaders were stripped and repainted with Awlgrip
- All standing wire rigging was replaced
- Inner forestay replaced
- Hydraulic backstay cylinders rebuilt
- Older hydraulic mainsail control hoses replaced
- Halyards were replaced
- Genoa sheets replaced
- Reckmann furlers were serviced
- Major engine service
- Generator removed from boat and major service performed
- Bottom sanded and re-antifouled
- RIB and outboard serviced
- Bimini and dodger serviced
- Sails serviced

OVERVIEW

Oyster 62 Deck Saloon model with twin wheel arrangement, exquisite four-stateroom layout and many upgrades.

The Oyster 62 ENZO is a quality semi-custom yacht design by Rob Humphreys and the Oyster Design Group. She is Hull #7, built in 2002, with exquisite maple interior joinery, and has been professionally maintained since new.

Her hydraulic in-mast and genoa furling and electric winches facilitate shorthanded cruising. The split cockpit with two wheels offers a spacious lounging area with center table and two raised-wheel consoles.

Recent upgrades include new main (2014) and staysail (2015), new anchor windlass (2016), new refrigeration, Ultrasuede upholstery and curtains, washer/dryer and refinished cabin sole. New Raytheon AIS transmitter and receiver (2016). New Dyform standing rigging and stowaway mast, and boom paint (2017).

INTERIOR ACCOMMODATIONS

Very well-maintained four-stateroom interior arrangement with large aft master, two forward guest cabins and midship guest/crew cabin. Interior joinery is American maple with a "Millennium"-style cabin sole. Spacious midship raised-deck saloon with starboard settee, two swivel arm chairs and navigation center to port. Passageway-style galley also to port. Sail locker forward, with lockers with watertight door.

- (9) berths in (4) cabins
- Interior joinery finished in American maple with Oyster "Millennium"-style cabin sole
- Essential features include sculpted fiddles and grabrails, 'shadow-gap' joints between panels, and Oyster custom knobs for lockers and drawers
- Surfaces in galley are Avonite Grey and beige in heads
- Upholstery - Alcantara Beige
- Curtains/blind systems to all cabins
- Oceanair "skyscreens" to all deck hatches
- Flyscreens to all opening hull and coachroof ports
- Carfamo fans - all cabins (2016)

Interior Upgrades

- Customized port forward guest cabin redesigned to allow lower berth to be converted to double berth (2012)
- New Alcantara upholstery (2012)
- Samsung Smart TV (2013)
- New main saloon curtains (10/2015)
- New washer/dryer Bosch Excel combo (2015)
- Refinished cabin sole (9/2014)
- Refinished fiddles (2016)

SALOON

Large oval settee to starboard with dining table, and two swiveling arm chairs with peninsula between to port. Omni-directional aerial at masthead for TV/FM. Many lockers, bookshelves and additional stowage outboard and under settees. HP Envy 120 wireless printer under table. CD stowage in top compartment of small peninsula unit between port side saloon seats. Bosch Excel washer/dryer installed (2015) in purpose-built cupboard to starboard, with DC electrical panel above.

STARBOARD FWD. CABIN

Double Pullman berth with hanging locker and cupboard, additional drawer, cupboards and locker. Direct access to ensuite head (PAR Quiet Flush toilet) with separate stall shower. Watertight door through forward shower bulkhead to sail locker/foc'sle with fold-up pipe berths and storage lockers.

PORT GUEST CABIN

Customized to provide single upper berth and convertible double berth. When lower berth filler is in place, there is a double lower berth and single upper berth. Lower forward locker was raised. Additional storage includes small dresser with (3) drawers, forward. Aft entry door from port guest cabin into passageway.

Behind the forward cabin in the passageway is a second entry door to the forward port head (PAR Quiet Flush toilet) with separate stall shower. Head includes vanity, wash basin, and storage locker. This head is also used as a day head.

MIDSHIP GUEST/CREW CABIN

The third guest cabin is located opposite the galley, aft of the chart table on the starboard side. Upper and lower berths, hanging locker and vanity with mirror. Good access to the inboard engine room doors.

OWNER'S STATEROOM

- Large double berth offset to port, dressing table with seat mirror and light, large hanging locker and abundant drawer, locker and shelf space.
- Teak tread and stainless staircase to companionway to aft deck
- Victoria Marine batten system beneath double berth (improves ventilation)
- Large ensuite head with separate stall shower
- PAR Quiet Flush toilet and wash basin

ENTERTAINMENT

Westmarine WM 400 Bluetooth outlets, USB, and iPod jack and iPod docking station fitted inside cupboard at navigation area. Additional similar system fitted in aft cabin to port side of headboard. Waterproof speakers in cockpit (all Bose 131). Samsung Smart TV mounted on forward bulkhead in saloon. Sony DVD player installed in cupboard at navigation area. Status omni-directional aerial at masthead for TV/FM.

NAVIGATION CENTER

Navigation center to port at the forward end of the saloon. Admiralty-sized chart table with lift top and storage under. Large custom-designed instrument console includes flush mounted AC electrical panel.

GALLEY

Impressive passageway galley with large front opening refrigerator and top-opening freezer.

- (2) New Sea Frost (air or water-cooled) refrigerator units (2015)
- Freezer updated (2014)
- Cockpit refrigerator updated (2015)
- Gimballed Force 10 stainless steel oven with four-burner stove
- Panasonic microwave oven
- Ice machine U-Line SP18 (installed 2013) in cupboard aft of sink area
- Oyster customized Wedgwood bone china crockery
- Oyster customized Sheffield stainless steel cutlery

ELECTRONICS

Nav Station

- E80 chart plotters
- New Raymarine AIS transmitter and receiver (2016)
- Graphic display (2009)
- ST60 wind/direction indicator
- Simrad RS90 VHF radio and antenna (9/2015)
- ICOM IC-M710 with ATU, two large ground plates as SSB earth and backstay insulator
- New keyboard port side
- ICS Navtex 6 plus, including GPS interface
- Satellite phone
- Inmarsat Fleet broadband FB500 antenna giving internet and phone connection (mounted on mast)
- Dell Inspiron PC 1TB HD
- Internet access from shore, satellite or mobile (3G), onboard WiFi for guests
- Marine Tract satellite tracking system

Cockpit

- G120 chartplotter radar screen with keyboard
- E80 chartplotter (starboard pedestal)
- Raytheon ST60 wind, speed/direction and depth, and (2) multi-displays over

companionway (total of 5)

- ST60 wind and depth (port helm)
- ST60 multi-display (starboard helm)
- Raymarine ST6001+ control electric Lewmar motor includes new MAMBA drive

MECHANICAL

- Perkins 165.5 kW Sabre M225TI with Aquadrive coupling (3,450 hours 8/17)
- Gear box (new 2012)
- Engine room insulated with 38 mm foam and lead sheets
- 88 amp alternator for engine start batteries
- 3-blade Max-Prop feathering prop
- Ambassador rope cutter on shaft
- Bowthruster: Sleipner tunnel including eyebrow
- Hydraulics: Lewmar 400 Commander system mounted adjacent to the mast. Includes headsail furling, mainsail furling and mainsail outhaul
- Air Conditioning: 220V reverse-cycle system of 56,000 btu's at 60 hz
- (2) New refrigeration units: Frigomatic system with keel coolers for fridges (2015). Deep freezer is saltwater-cooled (2014)
- Watermaker: Seafresh 206A 220V AC watermaker producing 90l/hr. New membranes (2014)
- Jabsco Sensor Max 17 main house water pump
- New Jabsco main electric bilge
- Electric bilge pump: Par 3160000010 with Par hydro air switch
- Henderson MkV manual bilge pump rated at 135 gpm
- External 220V submersible pump producing 7,000 liters/hour

ELECTRICAL

- Westerbeke 12kW AC generator (6,758 hours 8/17)
- 24 Volt DC and 220 AC electric system
- 220V MASS Sine wave inverter 24/2500 to run sockets, microwave and TV
- 30A and 32A dockside power cables. Hubbell sockets in life raft storage

Batteries

- Domestic: Bank of (4) 6V surrence batteries giving 800Ah at 24V
- Engine Start: 88Ah battery bank
- Generator Start: Separate 12V starting battery
- 12V Gel battery mounted at navigation area, with independent charger to provide power for SSB radio and other equipment
- Magnetronic DCC4000 battery controller for Amps, Volts and A/hour meter
- Mastervolt Alpha 'smart' regulator for 175A alternator

- (2) Mastervolt MASS 24V 100A battery chargers fed from 220V generator or shore power
- 2-way emergency parallel link system between domestic 24V and 24V engine start batteries

HULL

GRP solid laminate hull with structural stringers and floors to Lloyds-approved design specification. High performance modified bulb. Full skeg protecting the skeg-hung rudder. The stern design incorporates a bathing platform trimmed with teak slats and stainless steel steps for access to the stern deck. Hull color is white, with cove line and double boot top lines in standard Oyster blue.

DECK

Deck structure molded GRP sandwich construction with teak decks. Oyster deck raised saloon profile with 'eyebrow' G4 styling. Fiberglass bulwark finished with varnished teak capping.

- Whittall ED26 (300Kg) long reach davits
- (2016) Lewmar V5 24v electric anchor windlass with foot switch controls
- Double anchor roller
- CQR 75lb. anchor (2014) with 350'/12mm galvanized chain
- Danforth H3100 (30 kg) with 10m chain plus 80m/25mm rope
- Stainless steel pulpit, pushpit, and gateway midship stanchions
- Stern post for navigation/communications' antennae
- Liferaft stowage built into molded life raft bin on aft deck
- Stern quarter pushpit seats in teak and stainless steel with built-in stainless steel cup holders
- Stainless steel grabrails atop deck saloon
- Reinforced outboard bracket for 25 hp outboard
- Stainless steel mooring and cockpit cleats. Additional pair of mooring cleats on stern deck
- Stowage compartment, with removable partition, at forward end of anchor locker for kedge wrap and chain stowage
- Full-beam lazarette locker with twin stainless steel gas struts
- Gas/propane locker
- Warps and fenders
- (4) Large inflatable fenders
- Cockpit harness points upgraded to Wichard folding pad eyes
- (3) Stainless steel fishing rod holders
- 12' ALX AB center console alloy dinghy (2013)
- 30 hp Tohatsu 2-stroke (2013)

MAST and RIGGING

Cutter rig with hood white-painted Stoway mast (repainted with Awlgrip, 2017) with hydraulic drive and reversing outhaul, and bypass valve for emergency manual operation. Reckmann hydraulic furling headstay and Reckmann manual staysail furler (can be lead aft to power winch).

- New Dyform wire standing rigging (2017)
- All furlers/swivels etc. serviced or replaced (2017)
- Reckmann hydraulic furling headstay
- Reckmann manual furling on staysail
- Solid rod kicker
- Navtec hydraulic backstay adjuster
- Navtec hydraulic tensioner on each backstay
- Split backstay with insulators
- White painted Hood spinnaker pole stowed vertically on mast
- Sidewinder heel control
- Lightning steel brush protector at mast head

SAILS

- New Doyle main (2014)
- New 130% genoa (2012) with foam luff and leach sun cover
- New staysail (2015) with leech sun cover
- 1.5 oz. tri-radial spinnaker, 1.5 oz ripstop cruising chute with squeezer and GRP bucket, furling yankee, and staysail with padded luff
- Bowsprit for spinnaker sailing (2008)

WINCHES

Lewmar Winches

- 66 CEST single speed electric primaries
- 54 CEST manual secondaries
- 54 CEST electric mainsheet
- 30 ST mainsheet traveler control line, manual
- (2) 48 CST on mast

CANVAS

All canvas new 2012.

- Main companionway dodger (color: beige) with leather-covered stainless steel grab rail on

aft hoop

- Cockpit bimini (color: beige)
- Cockpit cushions in closed-cell foam with backrest cushions. Two sets of covers, including delivery set
- Helm seat fitted with Sunbrella-type vinyl backrest cushions and covers (2008)
- Cushions for pushpit back rails to pushpit seats
- Cover with felt insert for cockpit table

SAFETY

- Lifeguard 8-man life raft in valise (certified until June 2018)
- ACR Global Fix 406 EPIRB (certified until November 2018)
- Firdell blipper on mast
- Seame radar target enhancer at masthead
- Horseshoe life buoy with light
- Webbing jackstays
- Lifesling with canvas mounted on pushpit
- Emergency tiller
- Hydraulic bolt croppers mounted on aft bulkhead in lazarette
- Fire extinguishers

EXCLUSIONS

The owner's personal effects are excluded from the sale.

Исключения

При продаже яхты исключаются личные вещи владельца.

Отказ от ответственности

Компания предоставляет описание судна или яхты добросовестно, но не может гарантировать точность этой информации, а также не ручается за техническое состояние. Покупатель должен проинструктировать своих агентов или оценщиков исследовать представленную информацию более подробно, по собственному желанию. Продажа судна или яхты, изменение цены или снятие с продажи будет происходить без предварительного уведомления.

ФОТОГРАФИИ

Sailing



Profile



At Anchor



Sailing



At Anchor



Spinnaker



Cockpit



Cockpit, Looking Aft



Saloon



Dining Area



Galley, Looking Fwd.



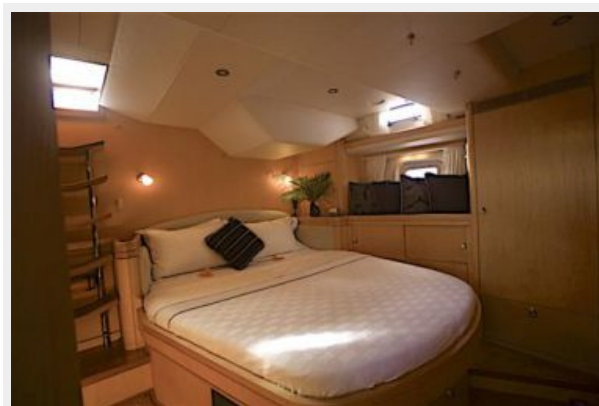
Galley, Looking Aft



Owner's Stateroom



Owner's Stateroom



Owner's Ensuite Head



Port Guest Cabin



Port Guest Cabin



Stbd. Guest Cabin



Stbd. Guest Ensuite Head



Foredeck



Stern View



At Anchor



St. Lucia



Layout



КОНТАКТЫ

Андрей Шестаков (Andrey Shestakov) – ведущий яхтенный брокер отдела продаж яхт и судов компании Shestakov Yacht Sales Inc. Официальный представитель Shestakov Yacht Sales Inc. для русскоговорящих клиентов в центральном офисе компании в Майами/Форт Лодердейл/Флорида/США.

Контактная информация

Email: andrey@shestakovyachtsales.com

Web: shestakovyachtsales.com

Телефоны

Краснодарский край: **+7(918)465-66-44**

США, Майами, Флорида: **+1(954)274-4435**

Время работы

Понедельник – Суббота: **9:00 - 21:00**
EDT

Воскресенье: **Закрето**

Адрес



Harbour Towne Marina, 850 NE 3rd St,
STE 213, Dania, FL 33004