

JAZZ — BENETTI



Builder: BENETTI

Year Built: 2007

Model: Motor Yacht

Price: PRICE ON APPLICATION

Location: United States

LOA: 100' 0" (30.48m)

Beam: 23' 7" (7.19m)

Min Draft: 6' 2" (1.88m)

Max Draft: 6' 6" (1.98m)

Cruise Speed: 13 Kts. (15 MPH)

Max Speed: 14 Kts. (16 MPH)

Our experienced yacht broker, Andrey Shestakov, will help you choose and buy a yacht that best suits your needs **JAZZ — BENETTI** from our catalogue. Presently, at Shestakov Yacht Sales Inc., we have a wide variety of yachts available on our sale's list. We also work in close contact with all the big yacht manufacturers from all over the world.

If you would like to buy a yacht **JAZZ — BENETTI** or would like help answering any questions concerning purchasing, selling or chartering a yacht, please call **+1(954)274-4435**

TABLE OF CONTENTS

TABLE OF CONTENTS	2
SPECIFICATIONS	3
Basic Information	3
Dimensions	3
Speed, Capacities and Weight	3
Accommodations	3
Hull and Deck Information	3
Engine Information	4
DETAILED INFORMATION	5
Accommodations & Layout	5
Mechanical Equipment & Engine Details	6
Electronics	7
Galley Laundry	8
Entertainment Equipment	8
Recent Upgrades	9
Exclusions	10
Exclusions	10
Disclaimer	10
PHOTOS	11
CONTACTS	15
Contact details	15
Telephones	15
Office hours	15
Address	15

SPECIFICATIONS

Basic Information

Category: Motor Yacht

Model Year: 2007

Year Built: 2007

Country: United States

Dimensions

LOA: 100' 0" (30.48m)

Beam: 23' 7" (7.19m)

Min Draft: 6' 2" (1.88m)

Max Draft: 6' 6" (1.98m)

Speed, Capacities and Weight

Cruise Speed: 13 Kts. (15 MPH)

Max Speed: 14 Kts. (16 MPH)

Gross Tonnage: 194 Pounds

Water Capacity: 1294.4430548 Gallons

Holding Tank: 433.24216528 Gallons

Fuel Capacity: 5944.927858208 Gallons

Accommodations

Total Cabins: 4

Sleeps: 8

Total Heads: 5

Crew Cabin: 3

Crew Berths: 6

Hull and Deck Information

Hull Material: GRP

Deck Material: Teak

Hull Configuration: Monohull

Engine Information

Engines: 2

Manufacturer: Caterpillar

Model: C18

Engine Type: Inboard

Fuel Type: Diesel

DETAILED INFORMATION

Accommodations & Layout

JAZZ, sleeps 8 guests in 4 staterooms, plus 6 crew in 3 cabins. Jazz's well thought out semi-custom interior features a full-beam master forward cabin on the main deck. The cabin has excellent natural light provided by panoramic windows on three sides which has electrically controlled blinds. There is a king bed facing forward entertainment center walk in wardrobe and vanity. The master head has a toilet, bidet, jacuzzi bath tub, large marble rain forest shower stall, double marble sinks and marble floor. Moving aft is the day head followed by the foyer that has a marble floor and a side door for greeting guests. To the portside is the well thought out and equipped galley which boasts a 2 level custom commercial fridge which has proven to be a wonderful addition for chartering. Following on from the galley is the side deck entrance and stairs to the crew area. Next aft is the beautifully appointed main Saloon with an oak table that comfortably seats 4 (6 when extended) and is accompanied by Patrick Gaguech chairs facing the pop up flat screen TV, there are also 2 single sofas and a 3 person couch designed by Patrick Gaguech, coffee table and full entertainment system.

Through double eclectically operated sliding doors is the large aft deck with a comfortable settee and varnished teak table. There is access to the upper deck, the swim platform and garage where all the water sports equipment can be stowed.

The lower deck has crew quarters forward, which includes 3 crew cabins, 3 heads and a crew mess. Accessed by separate stairs off of the foyer are two guest cabins. Both cabins have twin berths, which were altered to allow for double beds as well and an enclosed head with a rain forest stall shower. The large full-beam VIP cabin is located aft and is accessed by stairs off of the salon. This cabin has a large walk in closet, vanity, settee, queen bed and an enclosed rain forest shower stall accompanied by a single marble top sink.

The raised wheelhouse is up one half level and accessed from the foyer. There is an "L" shaped settee for guests to sit at. Up three stairs is a full bar butler's pantry, which has a custom feature of flat screen TV with full integrated entertainment system & controller, folding glass doors eclectic window thus opening up whole space to the guests. This wonderfully situated deck is under cover with a beautifully varnished (New 2016) dining table that comfortably sits 8. The aft end of the deck usually has a tender stowage area and davit. However on Jazz it was replaced with a large U-shaped white cushioned lounging sofa. From the dining deck aft you can access stairs to the lower aft main deck. Also via port or starboard stairs is a fly bridge with a comfortable settee for guests. The helm station was removed to allow for more teak white cushioned furniture (mooring is done via a Rexroth hand held controller). A unique feature of the Tradition is that from the observation deck there are stairs up to yet another deck, the large and inviting sun deck with sumptuous sun pad cushions, stereo and shower for those extremely hot days.

Mechanical Equipment & Engine Details

2 x Caterpillar C18 1000hp@2300RPM engine (**Both Engines completely rebuilt at 5005Hrs. There are 6095 total hours on the vessel at this time. "1090 Hrs on the engines since rebuilt"**) The main engines were rebuilt by RPM in June 2016 at a cost of \$141,043 Generators
2 x Kohler Generators Stb - (Rebuilt in 2016 by RPM Diesel (cost of \$39,545) Port Generator - June 2016 has its 2000 Hour service at a (cost of \$16,837) Port Generator was rebuilt in 2015
Port Generator - Total Hours - 9628 Hrs as of 9/17, 2753 since major service. Starboard Generator - Total Hours - 9628 Hrs - 2915 Hrs since major overhaul. A/SEA Power Converter (Plug in anywhere in the world)

2 x Reduction Gears ZF model ZFW2700

2 Fixed Pitch five blade propellers

2 x Rexroth Mini-Marex-C twin throttle controls

Alfa Laval fuel separator MIB 303

50HP Naiad bow thruster with control from wheelhouse and flybridge

Stabilizers: Naiad zero speed Active Fin Stabilizers

Watermaker: Idromar MCS8 1.450 GPD/ 5,500 LPD w1th Sand Filler with Ultra-Violet water sterilization unit

FW Pumps 2 x Gianneschi GR90 Freshwater pumps with 3 stage filter and UV sterilizer

Hamann fully automatic sewage treatment system

Allen Bradley Digital multistation boat management system (alarms, bilges. tank levels. electrical system) with viewing screens at pilothouse, engine room and crew mess

Air-conditioning: Condaria four compressor system w/3 x Heat pumps. Condaria Chiller Organizer 2 per cabin

Gianneschi & Rammacciotti engine room ventilation controls

2 x F I.M.M. Synchronous 3 Phase 55kW bilge pumps for garage

Emergency bilge and fire pump

Gianneschi & Rammacciotti 4kW 3 Phase ACM402BTI pump for man bilge manifolds

Gianneschi & Rammacciotti 4kW 3 Phase ACM402BTT pump for fire hose

Gianneschi & Rammacciotti PQ 40T 1.5kW 3 Phase clean lube oil pump

Gianneschi & Rammacciotti PQ 40T 1.5kW 3 Phase dirty lube oil pump

2 x Gianneschi & Rammacciotti NM11Be 1.5kW 3 Phase A/C circulation pumps

Extensive power tool, hand tool and spare parts list available.

Electronics

Wheelhouse: V-6 Intel SAT Communication (installed 10/16 for around \$50,000) Worldwide Nobeltec Admiral electronic charts - (Upgraded 2016)

Sperry Marine Gyrocompass Gyrostar II

Sperry Marine Digital Gyro STD22

Sperry Marine Nautopilot NP60 autopilot

Sperry Marine rudder feedback unit

Sperry Marine magnetic compass

Sperry Marine rudder angle indicator

Sperry Marine steering J09 stick

Furuno universal AIS

Furuno NX700 Navtex Receiver

Furuno GPS/WAAD Navigator

Furuno masthead unit w/ Furuno wind sensor

Furuno F1 30 Multi controller

Naiad Marine stabilizer control system

Sailor RT5022 VHF DSC

Sailor HC4500B MF/ HF Control unit

Panasonic WV-CU360 controller for digital video surveillance system

Panasonic WJ-SX650/SX150 digital disk recorder for surveillance

1 x WV-CW964 controllable color CCTV cameras with low light functionality

3 x Panasonic WV-CW474A fixed CCTV cameras

15" Sharp monitor for surveillance system

Spiech wiper control

Kahlenberg air horn w/ whistle control

Sanshin remote control searchlight with joystick remote control panel

AutroSafe 3.48.0 fire and heat detection system

2 x Stiener 7x50CF WP binoculars

2 x Caterpillar display units

2 x Team Italia 18" Outdoor LCD screen for navigation

Galley Laundry

Marble counter tops

Penguin custom built commercial double fridge

2 x Miele fridge/freezer drawers

Miele Ceran electric 4 burner ceramic cooktop

Miele built in convection oven

Miele Optima high-speed dishwasher

Stainless steel double sink with garbage macerator

Miele microwave oven

Whirlpool microwave oven

2 x Miele Softronic tumble dryers

Miele Softronic frontload washing machine

Indel 8 minibar in crew mess area

Hoshizaki icemaker in bar

Frigonautica mini fridge in bar

Entertainment Equipment

Each guest cabin, crew area and common areas have full entertainment systems (That have all been upgraded in 2016) Interchangeable European and USA LNB's and receivers

Naval MK20 terrestrial antenna/distribution box

Denon AVR-3805 AV receiver

Runco Crystal Widevision 32" LCD TV CR-32HD

LG 42SL9000 42xM2 42" plasma TV

2 x Sharp Aquas 13" LCD TV LC12EIU

2 x 27" Samsung sync master P2770HD

Over 300 DVD s and CD s

Linn Classic Affekt Bass Reinforcement speaker

2 x Speakercraft CRS8one 2-way 8" speakers

4 x Speakercraft CRS6one 2-way 6" speakers

2 x Speakercraft 6" speakers

Denon DVD auto changer DWM-725

Runco 32" Widevision TV

Runco 61" Widevision TV

2 x Harmon/Kardon DVD amplifier/receiver units

5 x Nevo S70 control pads

2 x Alpine OVA 9861RI VD receiver

3 x Sony COX GT300 DVD receiver

6 x Sky HD DV3 receiver boxes

Recent Upgrades

10 Year ABS Survey Completed October 2017 Both main engines rebuilt - June 2016 Starboard Generator rebuilt - June 2016 Port Generator 2000 Hour Service - June 2016 New Bridge Deck Teak Dining Table - June 2016 Complete touch up of boat from front to back of Gel Coat repairs - June 2016 Complete boat Ceramic Waxed - June 2016 All New exterior cushion covers by Wycap - June 2016 Replaced ships monitor - June 2016 New Marquipt Boarding Ladder - June

2016 2 New custom umbrellas - July 2016 Both Maxwell windlass gear boxed replaced - July 2016 Water Maker serviced - July 2016 Updated Nobeltec Charts - July 2016 Replaced Bridge Helm Controller - July 2016 Swim Platform/ Beach Locking Pins-System completely serviced - July 2016 New VIP carpet - July 2016 Alpha Laval complete service - July 2016 Naiad - Stabilizers major service - Aug 2016 All new TV's and controls for all guest staterooms - Sept 2016 (cost of \$20,860) Added V-Sat (Internet) - Sept 2016 (cost of \$60,000) Re insulated Master and VIP air handler water piping - Sept 2017 New PH Carpet - October 2017 New Bottom Paint - October 2017 (complete Hull Sanding) Hull and Superstructure Completely Waxed - October 2017 ABS 10 Year Survey completed - October 2017 Teak Decks Sanded and Sealed - October 2017

Exclusions

Owners Personal Belongings Intrepid Tow Boat Towing Line and Harness All Fishing Equipment

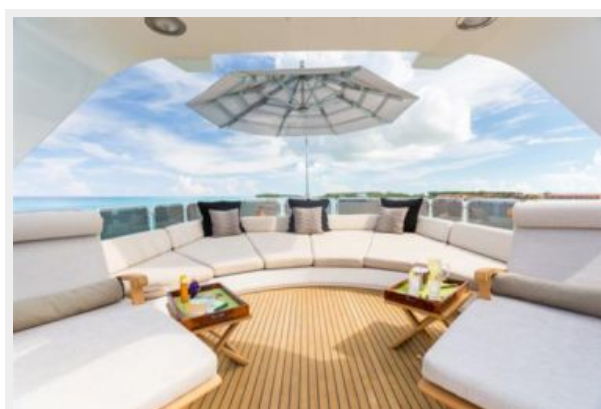
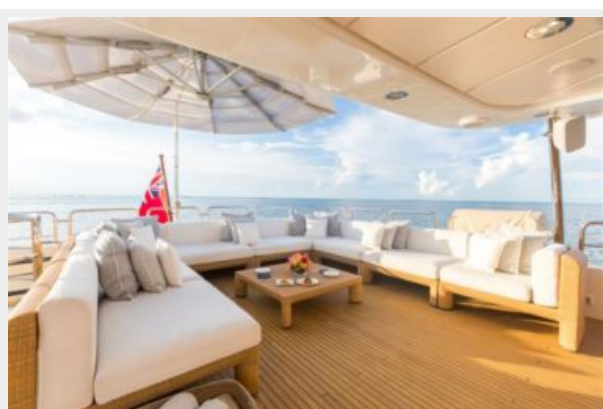
Exclusions

Owner's personal belongings.

Disclaimer

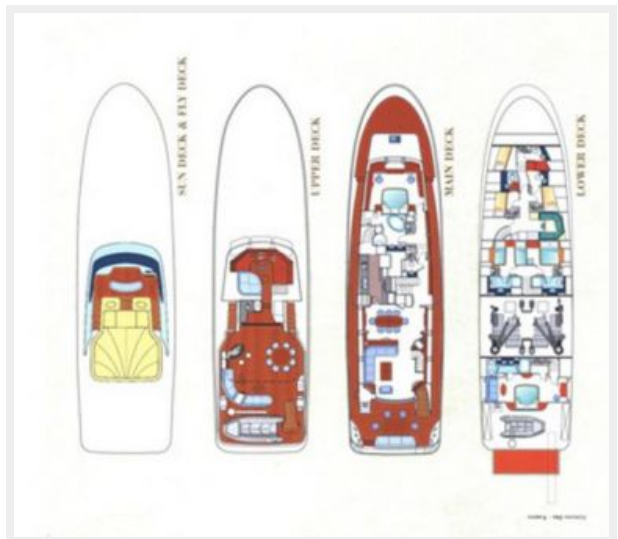
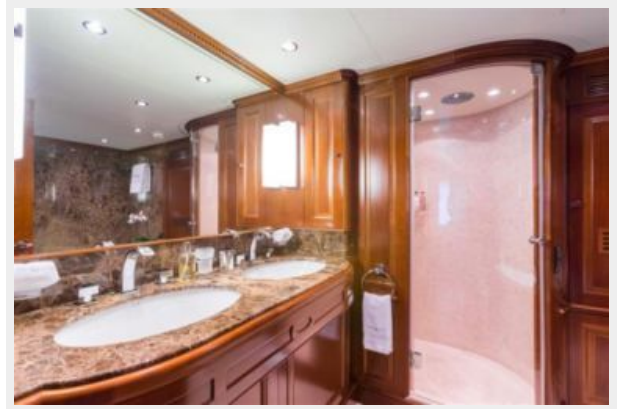
The Company offers the details of this vessel or yacht in good faith but cannot guarantee or warrant the accuracy of this information nor warrant the condition of the vessel. A buyer should instruct his representatives, agents, or his surveyors, to investigate such details as the buyer desires validated. This vessel or yacht is offered subject to prior sale, price change, or withdrawal without notice.

PHOTOS









CONTACTS

Andrey Shestakov, leading yacht broker of the sales department of Shestakov Yacht Sales Inc. Shestakov Yacht Sales Inc., the official representative of the Miami/Fort Lauderdale FL headquarters.

Contact details

Email: andrey@shestakovyachtsales.com

Web: shestakovyachtsales.com/en/

Telephones

USA: +1(954)274-4435

Office hours

Monday – Saturday: **9:00 - 21:00** EDT

Sunday: **closed**

Address



Harbour Towne Marina, 850 NE 3rd St,
STE 213, Dania, FL 33004