

## BILLY BONES — PACIFIC MARINER



**Builder:** PACIFIC MARINER

**Year Built:** 2005

**Model:** Motor Yacht

**Price:** PRICE ON APPLICATION

**Location:** United States

**LOA:** 85' 0" (25.91m)

**Beam:** 21' 3" (6.48m)

**Min Draft:** 5' 1" (1.55m)

**Max Draft:** 5' 5" (1.65m)

**Cruise Speed:** 19 Kts. (22 MPH)

**Max Speed:** 24 Kts. (28 MPH)

Our experienced yacht broker, Andrey Shestakov, will help you choose and buy a yacht that best suits your needs **BILLY BONES — PACIFIC MARINER** from our catalogue. Presently, at Shestakov Yacht Sales Inc., we have a wide variety of yachts available on our sale's list. We also work in close contact with all the big yacht manufacturers from all over the world.

If you would like to buy a yacht **BILLY BONES — PACIFIC MARINER** or would like help answering any questions concerning purchasing, selling or chartering a yacht, please call **+1(954)274-4435**

# TABLE OF CONTENTS

TABLE OF CONTENTS	2
SPECIFICATIONS	4
Overview	4
Basic Information	4
Dimensions	4
Speed, Capacities and Weight	4
Accommodations	4
Hull and Deck Information	5
Engine Information	5
DETAILED INFORMATION	6
Overview	6
Swim Platform	7
Aft Deck	7
Salon	7
Dining	8
Galley	9
On Deck Powder Room	9
Pilothouse	9
Companionway	10
Master Stateroom And Ensuite Head	10
VIP Stateroom	11
Guest Stateroom Port	11
Guest Stateroom Starboard	12
Crew Quarters	12
Flybridge Equipment and Electronics	13
Engine and Mechanical Equipment	14
Electrical System and Equipment	15
Deck Equipment	16

Hull Construction	16
Remarks	17
Exclusions	17
Disclaimer	17
PHOTOS	18
CONTACTS	27
Contact details	27
Telephones	27
Office hours	27
Address	27

# SPECIFICATIONS

## Overview

See the video on BILLY BONES.

## Basic Information

Category: Motor Yacht	Sub Category: Flushdeck
Model Year: 2005	Year Built: 2005
Country: United States	Vessel Top: Hardtop

## Dimensions

LOA: 85' 0" (25.91m)	Beam: 21' 3" (6.48m)
Min Draft: 5' 1" (1.55m)	Max Draft: 5' 5" (1.65m)

## Speed, Capacities and Weight

Cruise Speed: 19 Kts. (22 MPH)	Cruise Speed RPM: 1950 Kts.
Max Speed: 24 Kts. (28 MPH)	Max Speed RPM: 2340 Kts.
Displacement: 196211.41318 Pounds	Water Capacity: 395 Gallons
Holding Tank: 200 Gallons	Fuel Capacity: 2315 Gallons

## Accommodations

Total Cabins: 4	Total Heads: 5
Captain Cabin: True	Crew Sleeps: 2

## Hull and Deck Information

<b>Hull Material:</b> Fiberglass	<b>Deck Material:</b> Teak
<b>Hull Finish:</b> Stainless Steel	<b>Hull Designer:</b> William Garden

## Engine Information

<b>Engines:</b> 2	<b>Manufacturer:</b> MTU
<b>Model:</b> 12V2000	<b>Engine Type:</b> Inboard
<b>Fuel Type:</b> Diesel	

---

# DETAILED INFORMATION

---

## Overview

---

Be sure to check out the video on BILLY BONES

BILLY BONES is hull # 2 of the well respected 85' Pacific Mariner series. The original exterior design was modified in 2010, while the general arrangement and systems remained the same. This well kept vessel is currently the pride of the 85 Pacific Mariner fleet.

The interior has fresh upholstery, headliners and carpet. The Satellite communication & TV systems and AV equipment all upgraded. The main engines have been continually serviced in keeping with MTU requirements. A full engine survey, including oil samples and a **boroscope** was conducted by RPM Diesel in late September 2017. The *reports* were clean with no service or action required!! The survey findings reveal minimal requirements - - all which have been complied with. Both generator sets have had the same level of care. Boarding aft is via the swim platform then up teak stairs port and starboard. Also custom boarding gates were installed port and starboard aft deck via Marquipt Tide Ride boarding ladder. The teak aft deck has built-in bench seating at the aft section facing forward. The table is varnished teak from Blue Water with a compass rose in center and canvas cover with five teak chairs. Stern controls and docking station to port. A curved ladder to flybridge is portside and full walk around decks.

The main salon is entered through sliding glass doors and has satin finish cherry wood cabinetry and floor to ceiling windows at the aft section. Ronnie's new carpet was installed throughout entire vessel 01/2014. There are two barrel chairs facing forward with a cherry table between and an L-shaped sofa to port facing aft with storage below. A cherry burl coffee table that sits in front of the sofa is electrically operated and goes up and down to convert it from a coffee table to a dining table. For dining it also slides over toward the sofa in its raised position. The TV to starboard is electrically raised by motor with audio visual components forward. Forward to starboard is an L-shaped bar with an under-counter refrigerator/freezer and a wine storage fridge.

Up three steps forward is the galley to port with granite counter tops, Levlor blinds, Teak and holly floors and full appliances. The on-deck powder room is across to starboard with ample storage. Furthest forward is an L-shaped settee to port that has seating for five facing forward with large cherry wood & burl table. Furthest forward is the lower helm station with a full compliment of electronics, gauges and navigational aide and one Stidd chair.

Moving forward and down six steps is the VIP cabin with private head. Down 4 steps aft are 2 additional guest cabins with privates heads. The starboard guest cabin has an over sized queen berth with storage below. The port guest cabin has twin berths with storage below as well. Bedding in all staterooms was purchased new in 2014 as well as Tempurpedic mattresses.

Down a 10 step semi circular stairwell from forward port section off salon is the master stateroom with full beam suite midship with king sized berth and storage below and private head with Jacuzzi tub, separate shower, toilet, bidet and two sinks. Outside of the suite is a washer and

dryer that was purchased new in 2014.

Up curved stairs from port side aft deck is flybridge access. There is further access from an internal stairwell starboard side adjacent to the galley. Access to the forward deck can be either from aft deck or port and starboard Freeman doors in pilothouse.

Access to the engine room and crew quarters is thru a water tight transom door. There is a captain's cabin that will accommodate two in an oversized double berth with full head and shower. A utility room with washer dryer refrigeration/freezer has replaced the second crew cabin. Forward of crew area is the water tight door to the stand up engine room.

---

## Swim Platform

---

- Stainless steel swim ladder
- (3) Stainless steel 8" pop-up cleats
- Stainless steel hoop rails
- Hot & cold shower
- Stairways to aft deck
- Door to crew quarters
- Storage locker

---

## Aft Deck

---

- Boarding gates port and starboard
- Teak decks
- S/S sliding glass door to salon with tinted safety glass
- Access to crew quarters
- Stair case to flybridge
- Docking windlass port/strbd
- Shore power cords - Glendining port/strb
- Phone inlet
- Xenon lighting
- CATV
- Drop down TV
- Teak table with hi/lo base and slides in for dining and 5 chairs
- Custom upholstered bench seating reconditioned 4/2016
- Port side wing station (the 5th of five wing stations)
- Freshwater washdown
- Dockside water inlet

---

## Salon

---

Even with full side decks, the boat's beam allows for an impressive salon. There is a natural passage way from the aft sliding door to the stairs to the pilothouse level which makes getting through the boat easy and gives the salon a spacious feeling. The custom sofa is L-shaped and set up to act as a divider between the salon seating area and dining area.

Cabinetry on the starboard side hides the electrically raised 55 inch TV, complete with surround sound and a satellite receiver, a full service bar, S/S sink, U-Line wine chiller on counter top, Sub Zero refrigerator w/freezer below and ice maker. The salon becomes an entertainment center. a good place to share time with friends or enjoy the view.

It's amazingly quiet anywhere on the boat. Acoustical engineers were involved early in the design process to make sure this would be one of the quietest motor yachts in her class.

- New Whisperwall headliner installed 2017
- (2) sofas reupholstered April 2014
- Custom satin cherry cabinetry throughout
- Custom coffee table with an electrically operated hi/lo base that converts from a coffee table to a dining table and slides toward the sofa for dining
- (2) Occasional upholstered chairs NEW 2014
- Entertainment center with 55" Samsung TV Series 8 Smart TV on electric lift, KVH Tracvision satellite, audio/video control receiver, distributed audio system, DSS receiver, Denon DVD, JVC VCR & surround speaker system with Subwoofer
- Wet bar w/granite countertop, Sub-Zero refrigerator, icemaker & stainless steel sink
- Built-in U-Line wine cooler
- Custom window treatments with Hunter Douglas blinds
- Custom valances above doors concealing A/C vents
- Digital A/C controls
- Custom accent lighting & art lights wth dimmers

## Dining

---

- There are five separate dining areas: pilothouse, main salon, sofa area, aft deck and flybridge for great versatility
- Formal custom wood dining table with six chairs purchased new in 2014 (could seat 8 by adding 2 more chairs)
- Crystal, china and flatware in display cabinets
- Cabinets have racks for stemware
- Xenon lighting throughout with dimmers

---

## Galley

---

- Up 3 steps from salon is the on deck powder room to starboard and galley to port
- Custom window blinds
- Satin finished cherry cabinets
- Teak and holly flooring new June 2014
- Granite counter tops
- L-shaped dinette to port forward of galley w/teak table and 3 stools
- Fully equipped gourmet galley with premium appliances and cookware purchased NEW in 2014
- Double S/S sinks with Grohe faucet and garbage disposal
- GE Profile side by side refrigerator/freezer w/ice and water dispenser
- GE stainless steel range and convection oven
- Whirlpool microwave
- Kitchen Aid trash compactor
- Kitchen Aid dishwasher
- Additional 17 cubic foot freezer aft
- Digital AC control
- Xenon lighting

---

## On Deck Powder Room

---

- Custom wall coverings
- Marble flooring
- Vanity with sink and marble countertop
- Grohe single lever faucet
- Xenon lighting

---

## Pilothouse

---

- Lower helm station furthest forward to port
- Stairway to lower level accommodations
- Stairs to flybridge
- New Whisperwall headliner installed Sept. 2017
- Raised settee re-upholstered & built-in drawer storage
- Opening Freeman doors port & starboard to side decks
- Retractable screens on doors
- Power assisted hydraulic steering
- Wood rimmed stainless steel steering wheel
- MTU controls with back-up system
- MTU electronic engine instruments
- Generator control panels

- (2) ACR spotlights
- Weather station w/barometer, atomic clock & outside temp
- Satellite phone
- Panasonic phone system with cell, satellite & land modem
- Chart light with red lens
- (3) Chart drawers
- Xenon lighting with dimmers
- Digital A/C room temperature control
- Stereo speakers connected to main system with volume control
- Tempered windshield glass with frameless flush design
- Heavy duty windshield wiper/washers w/intermittent operation
- (3) 19" Flat Screen monitors - NEC
- Furuno Navnet Black Box color depth sounder
- Furuno Navnet Black Box plotter with GPS
- Furuno GP37 GPS
- Touch screen systems monitor
- Icom M602 VHF
- Simrad Autopilot
- Simrad digital depth, speed & wind gauges
- Naiad Multi Sea II stabilizer controls
- Naiad bow thruster control - hydraulic - PTO off starboard gen (33kw)
- (2) AC/DC distribution panels
- (3) NEC flat screen monitors
- Back up manual engine controls
- Simrad digital depth finder and speed log
- Richie compass
- Fireboy fire suppression system
- Engine room and aft deck cameras

---

## Companionway

- Maytag Neptune washer/dryer new November 2014
- Storage cabinet

---

## Master Stateroom And Ensuite Head

- Full-beam stateroom w/private entry doors
- King size Tempurpedic mattress
- Bedding NEW 2014
- Custom overhead panels
- Aft two bulkhead walls redone in satin finish cherry (Francesco Pimentel)
- Built-in nightstands with storage

- Custom built-in bookshelves
- Sharp 30" Flat Screen TV with DVD & DSS receiver
- Stereo system
- Built-in dressers & vanity
- Custom desk w/bookshelves, storage & chair
- (2) Swing arm reading lights
- (4) Portlights with screens
- Custom Hunter Douglas blinds

### **Master Head:**

- Granite countertop with 2 sinks
- Marble flooring w/custom glass tile inlay
- Grohe faucets
- Marble shower & large 5' Jacuzzi tub
- Tempered glass shower enclosure
- Matteo bidet
- Mirrored vanity with storage
- Full-length mirror on door
- Opening portlight with screen
- Custom Hunter Douglas blinds

## **VIP Stateroom**

---

- Queen size Tempurpedic mattress
- New bedding 2014
- Built-in drawers under berth
- Sharp 20" flat screen TV with DSS receiver, DVD & VCR
- Stereo w/CD & remote
- Cedar-lined hanging locker
- Xenon lighting
- (2) Swing arm reading lights
- Digital A/C controls
- Escape hatch with screen & privacy cover
- (2) Opening portlights with screens
- Custom Hunter Douglas blinds
- Private bath w/marble countertop, Kohler sink, marble flooring w/custom glass tile inlay, Grohe faucet, shower w/safety glass door, mirrored vanity w/storage & Xenon lighting

## **Guest Stateroom Port**

---

- Twin beds with Tempurpedic mattresses and built in-drawers
- New bedding 2014

- 15" Flat Screen TV/DVD & VCR
- Stereo with CD player & remote
- Cedar-lined hanging locker
- Xenon lighting
- Reading lights
- Digital A/C controls
- Opening portlight with screen
- Custom Hunter Douglas blinds
- Private bath with marble countertops, Kohler sink, Marble flooring
- Grohe faucet, stall shower with safety glass door, mirrored vanity with storage & opening portlight with screen

---

## Guest Stateroom Starboard

---

- Queen size Tempurpedic mattress with new bedding 2014
- Built-in drawers under berth
- Sharp 15" Flat Screen TV with DSS receiver, DVD & VCR
- Stereo with CD player w/remote control
- Cedar lined hanging locker
- Xenon lighting
- (2) Swing arm reading lights
- Digital A/C controls
- Escape hatch above berth with screen & privacy cover
- (2) Opening portlights with screens
- Custom Hunter Douglas blinds
- Private bath, marble countertops, Kohler sink, marble flooring, Grohe faucet, shower with safety glass door and mirrored vanity with storage

---

## Crew Quarters

---

- Access crew quarters from water tight transom door and access to engine room
- New teak and holly floors Sept 2014
- Captain's cabin with double size berth, drawer storage below, custom spread & shams
- Second crew quarter is converted to storage but can be reconverted back to two single berths - a lower and upper berth
- Utility room to port w/Vitrifigo drawer, (1) fridge, (1) freezer
- Sharp 13" TV with DVD & DSS receiver
- Cedar-lined hanging locker
- Xenon lighting
- (2) Reading lights
- Opening portlight with screens
- Custom Hunter Douglas blinds

- Counter top GE refrigerator
- Crew head with stall shower, vanity with Corian counter, sink, mirrors & Headhunter head
- Distribution panel across to port
- Built-in tool chest, storage drawer & cabinets **Crew Galley:**
- GE freezer and fridge, Sharp microwave & sink new in 2014
- Bosch washer & dryer units new November 2014
- Settee converts to pullman berth
- Sharp Flat Screen TV, DVD, DSS receiver & stereo system
- Reading lights
- Digital A/C controls
- Parts storage cabinet
- VHF radio
- Systems monitor
- Simrad digital repeater

---

## Flybridge Equipment and Electronics

---

- (2) Stidd helm & companion chairs and Stidd two-person bench seat
- Helm station w/wing controls port & starboard
- Stainless steel steering wheel
- Hydraulic steering, power assisted
- New KVH V3 Satellite system
- Garmin GPS map 7612 new 2017
- MTU instruments & controls
- Autopilot remote
- Icom M602 VHF radio
- Bow thruster control
- Simrad digital depth & speed gauges
- Magnetic compass
- Stereo speakers connected to salon system
- Sink with single lever faucet
- Overhead lights
- Custom curved windshield
- Custom oversized windscreen and SeaCrylic enclosure
- Hinged mast on hardtop above
- Sunbrella retractable awing aft section of flybridge
- All sink plumbing, fixtures and appliances new in 2015
- L-shaped bar w/granite countertop aft
- New November 2014 ice maker and two Perlick 2-drawer refrigeration units
- New November 2014 48-bottle Perlick refrigerator for wine bottles
- Lynx BBQ new 2014

- L-shape settee and teak table and seats up to six people
- Teak decks
- Euro Nautical Structures 1700lb hydraulic davit with power booming & rotation
- Dunnage box furthest aft to port
- Upholstered lounges port & stbd with storage below
- Stainless steel handrails
- Tungsten halogen floodlights
- Stairs to pilothouse
- Stairs to aft deck
- Canvas covers
- Dunnage box aft & port
- All furniture was reupholstered with new cushions November 2014
- Life raft - Viking 8-man (cannister)ACR EPIRB
- (2) Yamaha VX1100 Jet Skis new November 2014
- Paddle board racks on hard top

## Engine and Mechanical Equipment

- Hull and engine survey was conducted including Boroscope Sept. 2017. THESE CLEAN REPORTS ARE AVAILABLE TO ALL INTERESTED PARTIES. The engine survey, boroscope and oil samples strongly support that these engines are in extremely good and serviceable condition with no rebuilds required.
- Twin MTU 12V-2000's, 1500 HP Port Hrs 5600 / Starboard Hrs 5600
- 1250 rpms @ 10 knots
- Cruising speed 19kts @1950rpms / Max speed 24kts @ 2340rpms
- All oil & filters changed on mains & generators September 2017
- Smaller generator was replaced to a larger one in 2015/2016
- Generator sound shields w/sound attenuation kits
- Generators installed on double isolation mounts
- Generator & main engine sea strainers
- Aqua Air 96,000 BTU chilled water A/C system with reverse cycle heat & soft start system (2) 4 ton chillers - new chillers, electronics and frequency drives June 2015
- (11) air handling units were replaced new in 2015/2016
- Delta T engine room demisters with 24v fans
- Sea Recovery 1400 GPD watermaker (new fall 2016) with UV filter, commercial filters & autoflush
- Viqua water filtration system & UV sterilization system
- Stainless steel exhaust elbows - replaced blankets & hard coat glass on elbows 03/2012
- Dual Racor fuel filters for engines
- Naiad Multisea II Stabilizers
- Naiad 38hp hydraulic bow thruster
- Power assisted hydraulic steering
- DC control panel / AC control panel outside engine room

- Dripless seals for rudders
- Racor fuel filters for generators
- Oil change system for engines & generators
- 55 gal. new & used oil tanks
- Water system, pressurized 24v DC & 110v DC w/back-up pump
- Water tank, 316L stainless steel
- Dockside water connection with pressure reducing valve
- Freshwater outlet in engine room - hot & cold
- Water heater, 60 gallons - replaced 2 hot water heaters June 2015
- 200 gal FRP holding tank
- Head Hunter Tidal Wave waste treatment system
- Fire Boy five suppression system
- Seacocks on all underwater thru-hulls
- Engine room camera
- Vinyl engine room floor
- Storage shelves - out board port & starboard
- Work bench & vice forward section **Sound Package:**
- Underwater engine exhaust with vectored cowl
- Underwater discharge air conditioning system
- High density foam cored engine beds
- Soundown double density sound foam w/barrier in engine room
- 3M Thinsulate insulation in living areas
- Sound deadening tiles in strategic locations
- Inline silencers on air conditioning ducts
- All pumps and motors installed on isolation mounts
- Secondary mufflers on generators with underwater discharge
- Insulation on engine mufflers
- Sound absorbing pads under carpets

## Electrical System and Equipment

- V-Sat System installed new 2014 for Direct TV as well as satellite voice & data communication
- Northern Lights 33 KW Generator with PTO for thruster Starboard hrs: 7190
- Phasor gen set 30kw new November 2015 Port hrs: 4235
- Both generators - all injectors, raw water pumps, filters, heat exchangers cleaned & serviced 01/2016
- (2) Voltage boosting transformers 50 amp
- (2) Shore power inlets, 100 amp
- (2) Glendenning cabledmaster remotes
- (2) Shore power cords
- 120/240v DC distribution panel in crew quarters w/magnetic breakers, backlit labels, digital AC frequency, amp & voltmeters, split buss system with source selector switches & interlocks
- Receptacles, 120v DC GFCI protected all

- Systems monitor 24v DC distribution panel with magnetic breakers, backlit labels & digital amp & voltmeters
- Battery chargers, 12v & 24v
- House batteries (10) 8D Gel
- Bonding system
- 24v DC engine room ventilation
- 24v DC fluorescent engine room lighting LED
- 24v DC navigation lights
- 24v DC bilge pumps with float switches
- Phone & CATV inlet with 50' cable
- Courtesy lighting
- Heavy duty battery switches
- Battery paralleling switch
- (10) 8D Gel cell batteries replaced 03/2015
- (2) GRP 27 Gel cell batteries for generators

## Deck Equipment

---

- (2) Windlass 4000lb with warping capstans - rebuilt 04/2016
- (2) Delta 110lb anchors
- 300' high test chain each
- Stainless steel anchor mount
- Dual anchor system
- Kahlenburg horn
- Windshield system tempered safety glass frameless flush design
- 316 Stainless steel bow, spring and stern cleats
- Walk-around side decks
- Boarding forward port & starboard via Tide Ride ladder.
- Fuel fills, port & stbd
- Water fills, port & stbd
- Holding tank pump out fitting
- Stainless steel handrails
- Sunpad cushion with handrails
- Fender locker on foredeck with stainless storage hooks
- Bosen locker in deck

## Hull Construction

---

- UV resistant white gelcoat
- Epoxy barrier coat
- Vinylester resin barrier coat on hull & deck
- Airex cored hull bottom & topsides
- One piece fully cored unitized deck

- Cored fiberglass stringers
- Five composite structural bulkheads
- New LED (4) underwater lights
- Fiber optic lighted name boards port and starboard

## Remarks

---

BILLY BONES has benefitted from a most contentious owner and professional crew for the past several years. As already expressed in this presentation, hull and mechanical surveys have been conducted in September 2017 to provide unbiased and objective reports on the overall excellent condition. A continual approach to upgrade and improve this most capable yacht is obvious once you step aboard (including V-Sat System for Direct TV, as well as satellite voice & data communication, new 2014). Offered for sale to make way for next vessel. MOST IMPRESSIVE condition both cosmetically & mechanically. Docked in Ft. Lauderdale

## Exclusions

---

Owner's personal belongings.

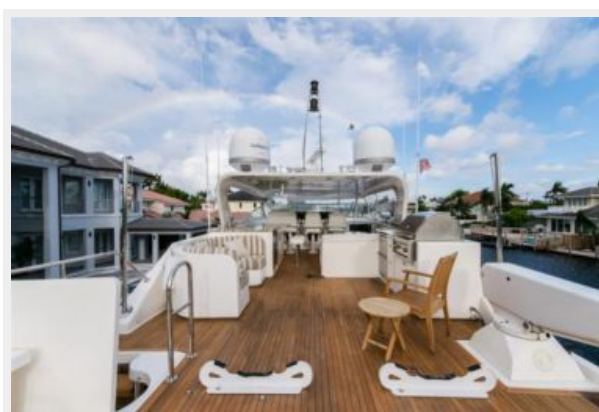
## Disclaimer

---

The Company offers the details of this vessel or yacht in good faith but cannot guarantee or warrant the accuracy of this information nor warrant the condition of the vessel. A buyer should instruct his representatives, agents, or his surveyors, to investigate such details as the buyer desires validated. This vessel or yacht is offered subject to prior sale, price change, or withdrawal without notice.

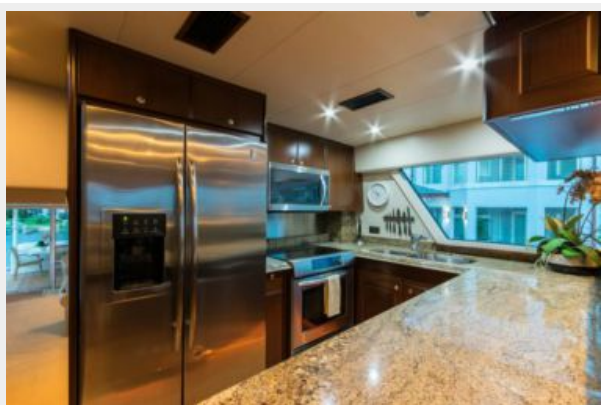
# PHOTOS

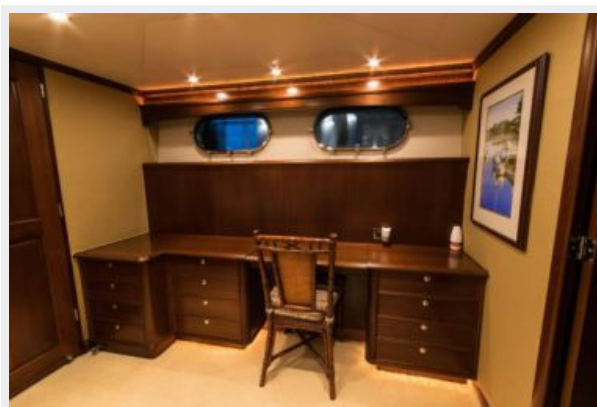
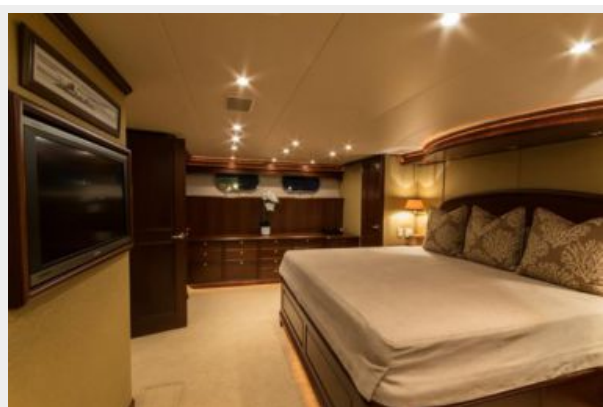
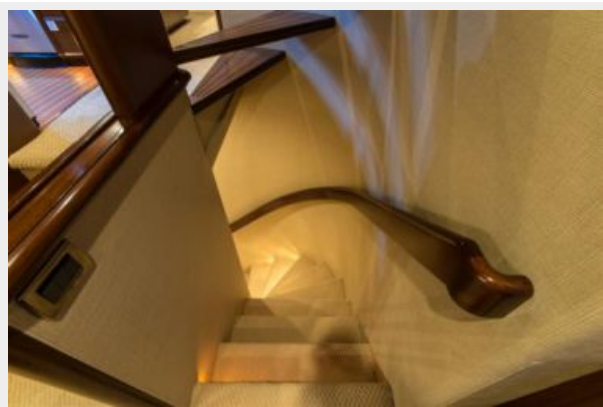




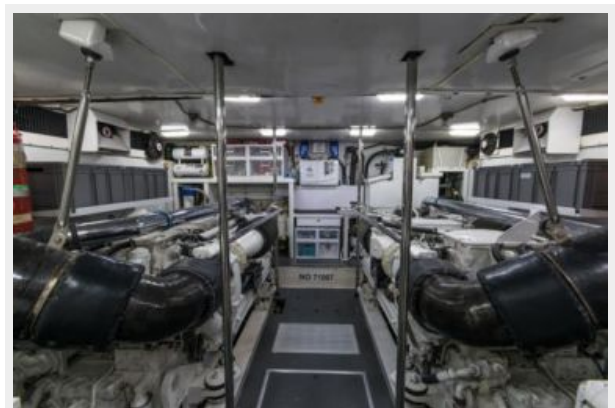


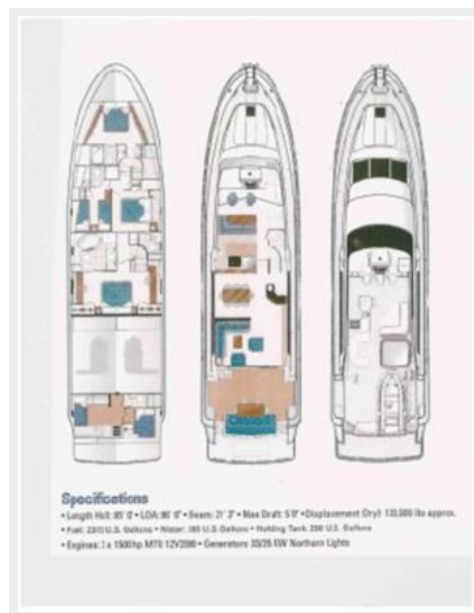












# CONTACTS

---

Andrey Shestakov, leading yacht broker of the sales department of Shestakov Yacht Sales Inc. Shestakov Yacht Sales Inc., the official representative of the Miami/Fort Lauderdale FL headquarters.

## Contact details

---

Email: **andrey@shestakovyachtsales.com**

Web: [shestakovyachtsales.com/en/](http://shestakovyachtsales.com/en/)

## Telephones

---

USA: **+1(954)274-4435**

## Office hours

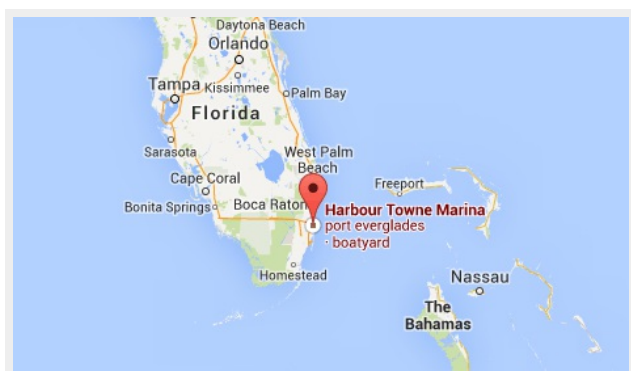
---

Monday – Saturday: **9:00 - 21:00 EDT**

Sunday: **closed**

## Address

---



Harbour Towne Marina, 850 NE 3rd St,  
STE 213, Dania, FL 33004