

STOP THE MADNESS — CARVER



Судостроитель: CARVER

Год постройки: 2006

Модель: Крейсер

Цена: ЦЕНА ЯХТЫ ПО ЗАПРОСУ

Местонахождение: United States

Длина общая: 36' 0" (10.97m)

Ширина: 12' 9" (3.89m)

Купить **STOP THE MADNESS — CARVER** а также выбрать подходящую вам яхту из нашего каталога яхт вам поможет опытный яхтенный брокер Андрей Шестаков. На сегодняшний день компания Shestakov Yacht Sales Inc. имеет большое количество яхт в собственном списке продаж, а также тесно сотрудничает со всеми крупными яхтенными производителями по всему миру.

Для того чтобы купить яхту **STOP THE MADNESS — CARVER** а также проконсультироваться по любому вопросу связанному с покупкой, продажей, чартером яхт позвоните по телефону **+7(918)465-66-44**.

ОГЛАВЛЕНИЕ

ОГЛАВЛЕНИЕ	2
ХАРАКТЕРИСТИКИ	3
Обзор	3
Основная информация	5
Размеры	6
Скорость, вместимость и масса	6
Размещение	6
Корпус и палуба	6
Информация о двигателе	6
ФОТОГРАФИИ	7
КОНТАКТЫ	10
Контактная информация	10
Телефоны	10
Время работы	10
Адрес	10

ХАРАКТЕРИСТИКИ

Обзор

CRUSADER 6.0 375 hp Engines NEW RISERS and MANIFOLDS KOEHLER GENSET Great boat With a roomy cockpit and a bridge built for entertainment, it'll help you exercise your capacity for fun.

The distinctive single-level floor plan sets this boat apart from the rest with a full-beam salon with plenty of sit down or walkabout space. There's also sleeping accommodations for five within the intelligently designed cabin.

Two integrated fiberglass stairways lead to a welcoming bridge that takes the concept of open-air entertaining to new heights. Port and starboard lounges, plus and aft, four wide bench seat add up to generous setting for 11.

Additional Specs, Equipment and Information: Engines Engine 1: Engine Brand: Crusader Year Built: 2006 Engine Model: 6.0 liter MPI Engine Type: Inboard Engine/Fuel Type: Gas/Petrol Engine Hours: 550 Drive Type: V Drive Engine Power: 375 HP Engine 2: Engine Brand: Crusader Year Built: 2006 Engine Model: 6.0 liter MPI Engine Type: Inboard Engine/Fuel Type: Gas/Petrol Engine Hours: 550 Drive Type: V Drive Engine Power: 375 HP

Dimensions

LOA: 36.58 feet Beam: 12.75 feet Bridge Clearance: 14.17 feet

Tankage

Fuel: 250 gallons Water: 75 gallons Holding: 31 gallons

Accommodations

Starting forward is a beautiful, centerline queen bed with opening hatch overhead for light and ventilation. The dual entry head is next aft with separate stall shower. The galley, with refrigerator and freezer, stainless steel sinks, two burner solid surface cook top and microwave is next aft to starboard. The dinette is next aft to starboard and there is a convertable "L" shaped settee to port. Going up a few steps through the slider takes you to the cockpit.

Galley

Separate refrigerator freezer compartments by Nova Cool Princess 2 burner electric stove top Emerson Microwave Dorian solid surface counter top Stainless Steel Sink w/hot 'n cold pressurized water Laminate flooring

Salon

Convertible Dinette to Starboard Settee to Port w/storage below Two (2) Reverse Cycle Air Conditioners w/Heat Flat Panel TV Clarion DVD Player Clarion CD/AM/FM/Sirius Ready Stereo Sony Speakers throughout 6 ft 4 in headroom

Head

Dual Entry from Master or Salon Vacu Flush Electric Head Enclosed Glass Shower Corian Counter Sink w/Hot 'n Cold Pressurized Water Mirrors

Upper Helm

Helm Station Bow Thruster controls Trim Tab controls Up and Down Controls for Windlass Raymarine C80 GPS Chartplotter Bimini w/Isenglass (2015) Dinette w/Seating Raritan Ice Maker Electric Panel Wipers 'n Search Light control Clarion Stereo controls w/speakers Fireboy Fire Suppression Bomar Hatch

Cockpit

Walk Thru Transom Entry from Swim Platform Magma Propane Grill Fish Rod Holders (4) Chairs (2)

Disclaimer The Company offers the details of this vessel in good faith but cannot guarantee or warrant the accuracy of this information nor warrant the condition of the vessel. A buyer should instruct his agents, or his surveyors, to investigate such details as the buyer desires validated. This vessel is offered subject to prior sale, price change, or withdrawal without notice. Engines Engine 1: Engine Brand: Crusader Year Built: 2006 Engine Model: 6.0 liter MPI Engine Type: Inboard Engine/Fuel Type: Gas/Petrol Engine Hours: 550 Drive Type: V Drive Engine Power: 375 HP Engine 2: Engine Brand: Crusader Year Built: 2006 Engine Model: 6.0 liter MPI Engine Type: Inboard Engine/Fuel Type: Gas/Petrol Engine Hours: 550 Drive Type: V Drive Engine Power: 375 HP

Dimensions

LOA: 36.58 feet Beam: 12.75 feet Bridge Clearance: 14.17 feet

Tankage

Fuel: 250 gallons Water: 75 gallons Holding: 31 gallons

Accommodations

Starting forward is a beautiful, centerline queen bed with opening hatch overhead for light and ventilation. The dual entry head is next aft with separate stall shower. The galley, with refrigerator and freezer, stainless steel sinks, two burner solid surface cook top and microwave is next aft to starboard. The dinette is next aft to starboard and there is a convertible "L"

shaped settee to port. Going up a few steps through the slider takes you to the cockpit.

Galley

Separate refrigerator freezer compartments by Nova Cool Princess 2 burner electric stove top Emerson Microwave Dorian solid surface counter top Stainless Steel Sink w/hot 'n cold pressurized water Laminate flooring

Salon

Convertible Dinette to Starboard Settee to Port w/storage below Two (2) Reverse Cycle Air Conditioners w/Heat Flat Panel TV Clarion DVD Player Clarion CD/AM/FM/Sirius Ready Stereo Sony Speakers throughout 6 ft 4 in headroom

Head

Dual Entry from Master or Salon Vacu Flush Electric Head Enclosed Glass Shower Corian Counter Sink w/Hot 'n Cold Pressurized Water Mirrors

Upper Helm

Helm Station Bow Thruster controls Trim Tab controls Up and Down Controls for Windlass Raymarine C80 GPS Chartplotter Bimini w/Isenglass (2015) Dinette w/Seating Raritan Ice Maker Electric Panel Wipers 'n Search Light control Clarion Stereo controls w/speakers Fireboy Fire Suppression Bomar Hatch

Cockpit

Walk Thru Transom Entry from Swim Platform Magma Propane Grill Fish Rod Holders (4) Chairs (2)

Основная информация

Тип судна: Крейсер

Модельный год: 2006

Год постройки: 2006

Страна: United States

Размеры

Длина общая: 36' 0" (10.97m)

Ширина: 12' 9" (3.89m)

Трапы: 14' 0" (4.27m)

Скорость, вместимость и масса

Вместимость воды: 75 Gallons

Вместимость сточного бака: 31 Gallons

Объем топливного бака: 250 Gallons

Размещение

Всего кают: 2

Корпус и палуба

Материал корпуса: Fiberglass

Информация о двигателе

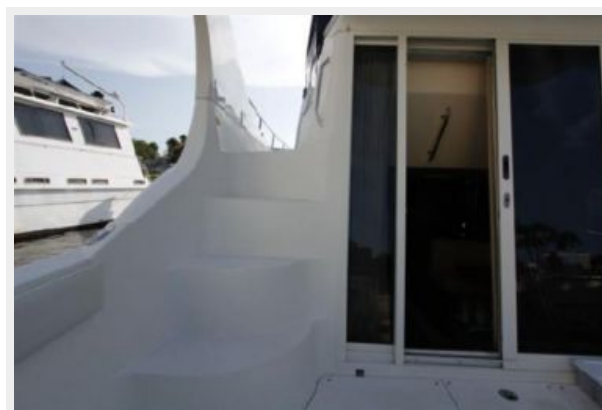
Двигатели: 2

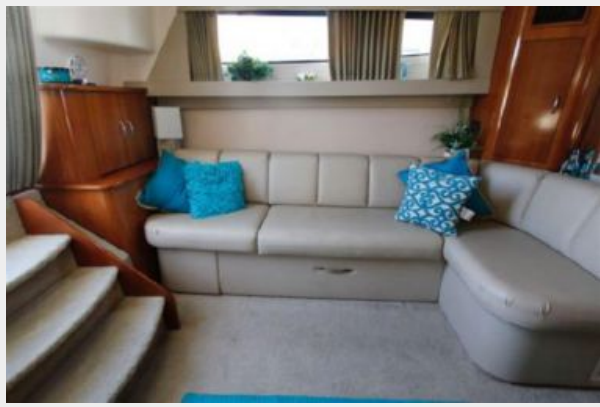
Производитель: Crusader

Тип двигателя: Inboard

Тип топлива: Gas/Petrol

ФОТОГРАФИИ







КОНТАКТЫ

Андрей Шестаков (Andrey Shestakov) – ведущий яхтенный брокер отдела продаж яхт и судов компании Shestakov Yacht Sales Inc. Официальный представитель Shestakov Yacht Sales Inc. для русскоговорящих клиентов в центральном офисе компании в Майами/Форт Лодердейл/Флорида/США.

Контактная информация

Email: andrey@shestakovyachtsales.com

Web: shestakovyachtsales.com

Телефоны

Краснодарский край: **+7(918)465-66-44**

США, Майами, Флорида: **+1(954)274-4435**

Время работы

Понедельник – Суббота: **9:00 - 21:00**
EDT

Воскресенье: **Закрето**

Адрес



Harbour Towne Marina, 850 NE 3rd St,
STE 213, Dania, FL 33004