

## CLASSIC ROCK — GRAND BANKS



**Судостроитель:** GRAND BANKS

**Год постройки:** 1974

**Цена:** ЦЕНА ЯХТЫ ПО ЗАПРОСУ

**Местонахождение:** United States

**Длина общая:** 42' 0" (12.80m)

**Ширина:** 14' 1" (4.29m)

**Мин. осадка:** 4' 2" (1.27m)

Купить **Classic Rock — GRAND BANKS** а также выбрать подходящую вам яхту из нашего каталога яхт вам поможет опытный яхтенный брокер Андрей Шестаков. На сегодняшний день компания **Shestakov Yacht Sales Inc.** имеет большое количество яхт в собственном списке продаж, а также тесно сотрудничает со всеми крупными яхтенными производителями по всему миру.

Для того чтобы купить яхту **Classic Rock — GRAND BANKS** а также проконсультироваться по любому вопросу связанному с покупкой, продажей, чартером яхт позвоните по телефону **+7(918)465-66-44**.

# ОГЛАВЛЕНИЕ

ОГЛАВЛЕНИЕ	2
ХАРАКТЕРИСТИКИ	6
Обзор	6
Основная информация	6
Размеры	6
Скорость, вместимость и масса	6
Размещение	7
Корпус и палуба	7
Информация о двигателе	7
ПОДРОБНОЕ ОПИСАНИЕ	8
Walkthrough	8
Deck Areas	8
Fly Bridge	8
Main Cabin / Salon	9
Lower Helm	9
Galley	9
Accommodations	10
Mechanical & Electrical	10
Additional Units Included	11
Disclaimer	11
Исключения	11
Отказ от ответственности	11
ФОТОГРАФИИ	12
Grand Banks 42 - Forward Profile 2.	12
Grand Banks 42 - Forward Profile 1.	12
Grand Banks 42 - At Dock 2.	12
Grand Banks 42 - Aerial	12
Grand Banks 42 - At Dock 1.	13

Grand Banks 42 - STBD Profile Aft Forward	13
Grand Banks 42 - Port Profile Forward	13
Grand Banks 42 - Stern Profile	13
Grand Banks 42 - Port Foredeck & Bow Pulpit	14
Grand Banks 42 - Bow Pulpit & Windlass	14
Grand Banks 42 - STBD Foredeck & Bow Pulpit	14
Grand Banks 42 - Bow Pulpit	14
Grand Banks 42 - Aft Deck	15
Grand Banks 42 - Aft Deck to Port	15
Grand Banks 42 - Port Side Deck	15
Grand Banks 42 - STBD Side Deck	15
Grand Banks 42 - Mid Deck Steps	16
Grand Banks 42 - Mid Deck to Fly Bridge	16
Grand Banks 42 - Fly Bridge	16
Grand Banks 42 - Fly Bridge 2	16
Grand Banks 42 - Fly Bridge Helm Station 2.	16
Grand Banks 42 - Fly Bridge Helm Station	16
Grand Banks 42 - Fly Bridge Storage to Port	17
Grand Banks 42 - Fly Bridge	17
Grand Banks 42 - Fly Bridge Windscreen	17
Grand Banks 42 - Fly Bridge Forward	17
Grand Banks 42 - Fly Bridge Aft Deck Area	17
Grand Banks 42 - Fly Bridge Mast	17
Grand Banks 42 - Dinghy 1.	18
Grand Banks 42 - Dinghy 2.	18
Grand Banks 42 - Helm Station Dual Engine Gauges.	18
Grand Banks 42 - Helm Station (2).	18
Grand Banks 42 - Helm Station Instrumentation	19
Grand Banks 42 - Helm to Port	19

Grand Banks 42 - Helm Station Electrical Panel	19
Grand Banks 42 - Helm Station Instrumentation	19
Grand Banks 42 - Helm Overhead Instrumentation	20
Grand Banks 42 - Helm Windscreen	20
Grand Banks 42 - Helm Windscreen Adjustable Window	20
Grand Banks 42 - Salon 2.	20
Grand Banks 42 - Salon Port Aft Work Station & Freezer	21
Grand Banks 42 - Salon 1.	21
Grand Banks 42 - Salon Liquor Cabinet Open	21
Grand Banks 42 - Salon Liquor Cabinet	21
Grand Banks 42 - Galley Sink & Under Storage	22
Grand Banks 42 - Galley	22
Grand Banks 42 - Galley Stove Top Cutting Board	22
Grand Banks 42 - Galley Stove Top Closed	22
Grand Banks 42 - Galley Electric Stove Top & Oven	23
Grand Banks 42 - Galley Cabinet Storage to Aft	23
Grand Banks 42 - Aft Stateroom Dbl Berth Under Storage	23
Grand Banks 42 - Aft Stateroom Dbl Berth	23
Grand Banks 42 - Aft Stateroom Storage Cabinet	24
Grand Banks 42 - Aft Stateroom Port Side Berth	24
Grand Banks 42 - Aft Stateroom Door to Aft Deck	24
Grand Banks 42 - Aft Stateroom Exterior Door	24
Grand Banks 42 - Aft Stateroom Stairs to Salon	25
Grand Banks 42 - Main Head & Shower	25
Grand Banks 42 - Forward V-berth	25
Grand Banks 42 - Forward V-berth A-C Vent	25
Grand Banks 42 - Forward V-berth Stairs to Salon	26
Grand Banks 42 - Forward V-berth Privacy Door	26
Grand Banks 42 - Forward V-berth Overhead Hatch	26

Grand Banks 42 - Engine Room A-C Systems	26
Grand Banks 42 - Forward Guest Head	27
Grand Banks 42 - Forward Guest Head Sink	27
Grand Banks 42 - Forward Guest Head 2.	27
Grand Banks 42 - Engine Room Port Engine	27
Grand Banks 42 - Engine Room STBD Engine	28
Grand Banks 42 - Engine Room STBD Engine to Aft	28
Grand Banks 42 - Engine Room Generator	28
Grand Banks 42 - Engine Room HW Heater	28
Grand Banks 42 - Engine Room New Fuel Tank Port Side	29
Grand Banks 42 - Engine Room New Fuel Tank STBD Side	29
Grand Banks 42 - Engine Room Battery Bank	29
Grand Banks 42 - Engine Room Fuel Gauges	29
Grand Banks 43 - Engine Room Battery Charger	30
Grand Banks 42 - Forward Profile on the Hard	30
Grand Banks 42 - STBD Profile	30
<b>КОНТАКТЫ</b>	<b>31</b>
Контактная информация	31
Телефоны	31
Время работы	31
Адрес	31

# ХАРАКТЕРИСТИКИ

## Обзор

Newly Listed - Grand Banks Fly Bridge Classic with numerous upgrades throughout! This is a very well cared for and maintained GB that is available for the next owner and next adventure. Grand Banks are known for their superior construction and sea worthiness. Outfitted with twin John Deere 120hp engines, you get dependability and durability and the classic looks and lines of a true highly desirable Trawler. The well laid out multifunctional salon, forward and aft berth with separate heads, spacious fly bridge and deck areas make this a great vessel for entertaining, cruising and family fun without the feeling of being on top of one another. Included is the 2013 10ft Cadet RHIB dinghy and 15hp 4-stroke engine. She is outfitted and ready to go. Whether cruising the Chesapeake Bay, inland and coastal water ways or the ultimate voyage of the Great Loop, this is a "must see" vessel!

## Основная информация

<b>Подкатегория:</b> Траулер	<b>Модельный год:</b> 1974
<b>Год постройки:</b> 1974	<b>Страна:</b> United States
<b>Открытая палуба мостика:</b> Да	

## Размеры

<b>Длина общая:</b> 42' 0" (12.80m)	<b>Длина по ватерлинии:</b> 41' 1" (12.52m)
<b>Ширина:</b> 14' 1" (4.29m)	<b>Мин. осадка:</b> 4' 2" (1.27m)
<b>Трапы:</b> 23' 6" (7.16m)	

## Скорость, вместимость и масса

<b>Водоизмещение:</b> 37000 Pounds	<b>Вместимость воды:</b> 265 Gallons
<b>Вместимость сточного бака:</b> 60 Gallons	<b>Объем топливного бака:</b> 500 Gallons

## Размещение

---

**Всего кают:** 2

**Всего коек:** 4

**Всего ком. состава:** 2

## Корпус и палуба

---

**Материал корпуса:** Fiberglass

**Комплектация корпуса:** Modified V-Hull

## Информация о двигателе

---

**Двигатели:** 2

**Производитель:** John Deere

**Модель:** 4404

**Тип двигателя:** Inboard

**Тип топлива:** Diesel

---

# ПОДРОБНОЕ ОПИСАНИЕ

---

## Walkthrough

---

Classic Rock is accessible from a variety of locations, up the swim platform steps and onto the aft deck or through the port and starboard deck railings. Up 2 steps from the port side deck are the mid deck and dinghy. Up 4 more steps are the spacious fly bridge and upper helm. There are multiple doors to the main cabin / salon. Two side deck doors to port and starboard and an aft deck door into the aft stateroom. The main cabin / salon is multi-functional with the lower helm, galley and dinette. Forward is the guest stateroom with ensuite head. The master stateroom and ensuite head with tub/shower are aft.

## Deck Areas

---

One of the nice features on Classic Rock is the all-around deck configuration. The wide side decks allowing easy access forward or aft to manage dock or canal lines. The aft deck accesses the swim platform and stern lines. It should be noted that the aft deck lazarette hatch doors have just been rebuilt and follow original design. The fore deck is spacious with ample room to manage the windlass and bow lines. From the side decks up, is the mid deck that features the dinghy, stabilizing mast, davit and radar dome and ample storage for everyday gear. Bridge clearance with the radar mast up is 23ft 6in from design water line (DWL) and 13ft 1in when mast is down and cradled. The dinghy located on the mid-deck is a 2013 Zodiac Cadet 310 RHIB (10ft 2in). The engine is a 2014 Tohatsu 15hp 4-stroke (electric start) with back up pull-start. Up 4 stairs are the fly bridge and upper helm station. Upgrades include: - Built and installed new bowsprit (2013) - Swim platform and teak decking repairs (2013) - Replaced anchor with 66lb claw anchor (spare anchor located in the lazarette) (2013) - Replaced brass rub rails with stainless steel

## Fly Bridge

---

The fly bridge deck is very spacious and could easily accommodate additional deck chairs, table and even a grill. The helm station features back-to-back bench seating (with cushions) for up to 6 people and offers a great 360-degree view of the entire boat. The helm has a traditional wooden wheel to starboard. Instrumentation includes: - Dual engine controls and instrumentation (rpm, temp, battery, oil pressure) - Multifunction Garmin 4208 Chart Plotter - Navigation light switches and spot light - Compass - 12-V convenience outlet Fly bridge storage is provided by under console cabinets to center and to port of the helm station. Upgrades include: - Replaced salon and fly bridge stereo speaker system (2012) - Installed new Garmin 4212/4208 System (salon and fly bridge units respectively), including new dual GSD-22 depth transducers, new Garmin GNR24 HD radar, Standard Horizon GX2100 VHF/AIS system, new Shakespeare Galaxy



5225XT VHF antennae, new flat TV - Rebuilt and reinforced bimini sleeves (2014)

---

## Main Cabin / Salon

---

A main focal point of Classic Rock is the multifunctional cabin that houses the lower helm station, salon and galley. The helm station is forward starboard side. Galley, forward port side and transcends to mid cabin port side aft and the seating and dinette area is aft starboard side. The salon area consists of a combination L-shaped settee and dinette to starboard aft that seats 6. There is ample under-bench storage including an integrated large stainless ice chest. Adjacent to the settee is the liquor cabinet with hide-a-way cover and added storage. Across from the settee is a working counter space for charts and guides, an under-counter freezer, storage and flat screen Samsung TV. One of the best features in the main cabin is the multiple working windows throughout (2 sets to both port and starboard, 1 center forward and 1 aft of the settee). Upgrades include: - The exterior house portion of boat was stripped to bare surface and structural repairs/ reinforcements were installed. The hull was also stripped to bare surfaces for thorough assessment of hull structure. Both the house and the hull were then repainted with 6 coats of primer and 4 finishing coats of Awlgrip (2013). - Original windows were removed, window structures were completely reframed to eliminate wood rot, and 21 new custom designed aluminum frame UV-rated light grey tinted glass were installed, along with custom screens and locking sliders. The three forward windows were designed with reinforced clear glass (to ensure proper forward night vision), and center forward window pivots open for airflow over the helm station (2013). - New custom-built teak salon starboard and port doors were installed with new UV-rated windows (2013). - A new headliner was installed after overhead structural repairs were completed (2013). - A new teak bar top was installed (2013).- The HVAC system was replaced in 2012 with a new 16K BTU unit controlled through a new LCD control head

---

## Lower Helm

---

The lower helm consists of a standup station (though there is ample room for the tall folding style Captain's chair) boat operation instrumentation and side access door. Helm instrumentation includes: - Dual engine controls - Dual engine operation gauges (RPM, amps, oil pressure, temperature, hour meter) - Electrical panel (12-V DC, 120-V AC & 240-V AC breaks and switches) - Northern Lights generator gauges (temperature, oil pressure, voltage, engine hours start/stop switches) - Control switches (navigation, forward & aft bilges, wipers (3) - Engine start switches - Battery monitor / meter (installed 2013) - Multifunction Garmin 4212 Chart Plotter - Ritchie Compass - Standard Horizon AIS/VFH (overhead)

---

## Galley

---

The well-designed galley along the port side is equipped for all of your cooking needs and includes: - Double stainless steel sink, water filter, under storage (3 drawers / 1 cabinet), and convenience outlet - Under counter refrigerator - Under counter freezer (separate) - Seaward

Princess 3 burner electric range with combination cutting board insert & counter cover (new) -  
Dish storage hide-a-way - Overhead cabinet aft of the galley area

## Accommodations

---

The accommodations feature separate forward and aft staterooms with private heads. The forward stateroom offers a V-berth with central step up. Under storage is provided in 6 drawers (3 to port and 3 to starboard). There is additional shelf storage to port and port aft in addition to cabinet storage (over and under) on the port side. A privacy door separates the forward stateroom and salon. There is also an overhead tinted hatch for natural lighting and ventilation. The forward ensuite head features an electric head, shower faucet, built in counter space and molded sink, multiple storage drawers, cabinets and selves, and window. The aft master stateroom is full beam with a double size berth to port and a single size berth to starboard. Separating the berths are stairs and access door (with custom fitted screens) to the aft deck. The spacious master stateroom offers plenty of storage with a hanging locker to port aft, under berth storage (5 drawers - 3 to starboard / 2 to port), central bureau with 5 drawers and counter top storage. Multiple windows provide light throughout. Reading lights are also provided as well as a separate A/C unit and controller. The HVAC system that services the main cabin was replaced with a new, 16K BTU unit in 2017. The master stateroom head is a full size with electric head, a full size shower/bath tub and ample storage with built in under-counter double cabinet and drawer. There is a molded sink and extended counter space along with full size wall mirrors above the sink area and forward.

## Mechanical & Electrical

---

The Grand Banks 42 is outfitted with twin 120hp John Deere diesel engines (Model #4404). These are highly dependable in-line 6 engines that are known for their durability, easy maintenance and longevity. Engine mounts are clean and in good condition as is the bilge area under the engines (well maintained). Fuel hoses and belts show no signs of cracking. All exhaust hoses, engine hoses, clamps are in good conditions. The overall condition of the electrical system is very good. The generator is a Northern Lights 8kW diesel. Engine mounts, factory paint, belts and pulleys, fuel lines and filters, hoses and clamps are all in good to excellent condition per Survey conducted in 2016. Starter and house batteries (3 - deep cycle marine) are housed in enclosed separate battery boxes. A polarity indicator is located on the main panel (lower helm). Blowers, cabin lights, running lights, bilge pumps are in good operational condition as are the shore power connector (replaced in 2012) and shore power cord (new in 2012). There is a 40-amp battery charger (new in 2011) in the engine room. Upgrades include: - Repaired thru-hull fittings, repacked stuffing boxes, replaced both A/C units, repaired bilge pumps, repaired dock lights, grounded engines, replaced engine blower units, replaced props (2011) - Zincs replaced annually, bottom routinely maintained by diver and inspected for any signs of electrolysis, and repainted regularly (2012, 2014, 2016) - Replaced port water pump (2012) - Replaced main engine and HVAC system sea water strainers and miscellaneous hoses (2017) - Rebuilt and reinstalled stbd 71C Velvet drive 2.1 transmission (2012) - Custom-designed electric

panels (2012) - Electrical overhaul of boat to current electrical code including new wiring throughout; new circuit breakers and conversion to 50 amp shore power input (2013) - Rewired Genset for 240V AC ops (2012) - Installed a multi-page, LCD electrical monitor in main salon that displays health of the electrical system (2013) - Replaced #1 & #2 dual purpose flooded marine battery (2012) - Removed old iron fuel tanks and replaced with custom-built aluminum tanks (500 gallon capacity) 2013 - Replaced genset impeller, replaced starboard water pump, replaced battery charger, replaced fuel lines (2013)

---

## **Additional Units Included**

---

2013 Zodiac Cadet 310 RHIB

---

## **Disclaimer**

---

The Company offers the details of this vessel in good faith but cannot guarantee or warrant the accuracy of this information nor warrant the condition of the vessel. A buyer should instruct his agents, or his surveyors, to investigate such details as the buyer desires validated. This vessel is offered subject to prior sale, price change, or withdrawal without notice.

---

## **Исключения**

---

При продаже яхты исключаются личные вещи владельца.

---

## **Отказ от ответственности**

---

Компания предоставляет описание судна или яхты добросовестно, но не может гарантировать точность этой информации, а также не ручается за техническое состояние. Покупатель должен проинструктировать своих агентов или оценщиков исследовать представленную информацию более подробно, по собственному желанию. Продажа судна или яхты, изменение цены или снятие с продажи будет происходить без предварительного уведомления.

# ФОТОГРАФИИ

**Grand Banks 42 - Forward Profile 2.**



**Grand Banks 42 - Forward Profile 1.**



**Grand Banks 42 - At Dock 2.**



**Grand Banks 42 - Aerial**



**Grand Banks 42 - At Dock 1.**



**Grand Banks 42 - STBD Profile Aft Forward**



**Grand Banks 42 - Port Profile Forward**



**Grand Banks 42 - Stern Profile**





**Grand Banks 42 - Port Foredeck & Bow Pulpit**



**Grand Banks 42 - Bow Pulpit & Windlass**



**Grand Banks 42 - Bow Pulpit**



**Grand Banks 42 - STBD Foredeck & Bow Pulpit**



### Grand Banks 42 - Aft Deck

### Grand Banks 42 - Aft Deck to Port



### Grand Banks 42 - Port Side Deck

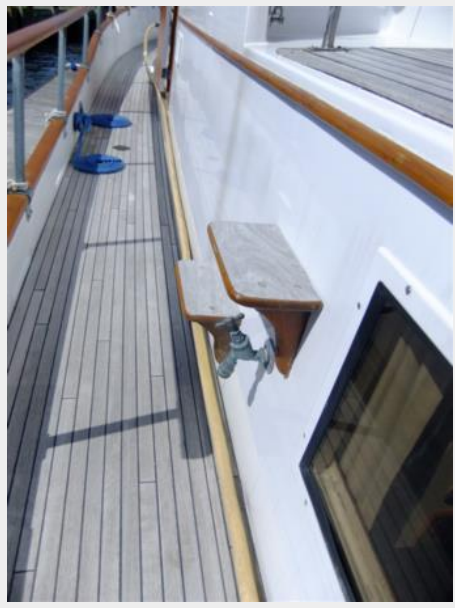


### Grand Banks 42 - STBD Side Deck





**Grand Banks 42 - Mid Deck Steps**



**Grand Banks 42 - Mid Deck to Fly Bridge**



**Grand Banks 42 - Fly Bridge**



**Grand Banks 42 - Fly Bridge 2**



**Grand Banks 42 - Fly Bridge Helm Station 2.**



**Grand Banks 42 - Fly Bridge Helm Station**





**Grand Banks 42 - Fly Bridge Storage to Port**



**Grand Banks 42 - Fly Bridge**



**Grand Banks 42 - Fly Bridge Windscreen**



**Grand Banks 42 - Fly Bridge Forward**



**Grand Banks 42 - Fly Bridge Aft Deck Area**



**Grand Banks 42 - Fly Bridge Mast**



**Grand Banks 42 - Dinghy 2.**



**Grand Banks 42 - Dinghy 1.**



**Grand Banks 42 - Helm Station (2).**



**Grand Banks 42 - Helm Station Dual Engine Gauges.**





### Grand Banks 42 - Helm to Port



### Grand Banks 42 - Helm Station Instrumentation



### Grand Banks 42 - Helm Station Instrumentation



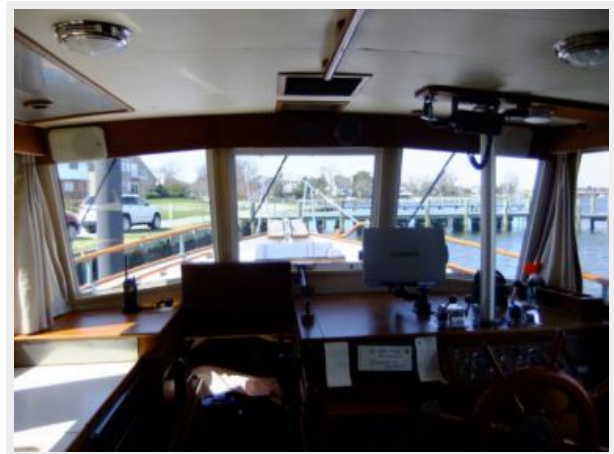
### Grand Banks 42 - Helm Station Electrical Panel



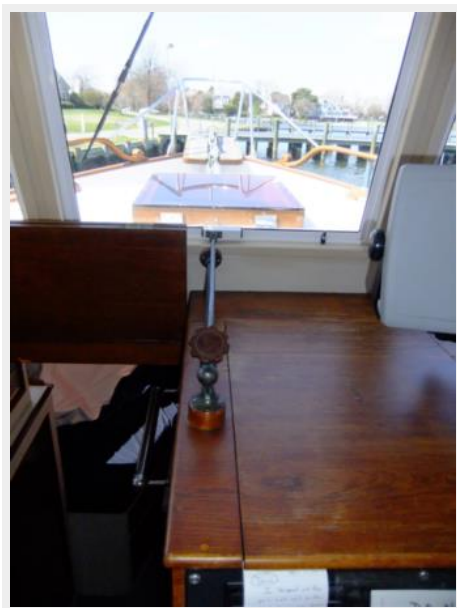
**Grand Banks 42 - Helm Overhead Instrumentation**



**Grand Banks 42 - Helm Windscreen**



**Grand Banks 42 - Helm Windscreen Adjustable Window**



**Grand Banks 42 - Salon 2.**



**Grand Banks 42 - Salon 1.**



**Grand Banks 42 - Salon Port Aft Work Station & Freezer**



**Grand Banks 42 - Salon Liquor Cabinet**



**Grand Banks 42 - Salon Liquor Cabinet Open**





### Grand Banks 42 - Galley Sink & Under Storage

### Grand Banks 42 - Galley



### Grand Banks 42 - Galley Stove Top Closed

### Grand Banks 42 - Galley Stove Top Cutting Board



**Grand Banks 42 - Galley Electric Stove Top & Oven**



**Grand Banks 42 - Galley Cabinet Storage to Aft**



**Grand Banks 42 - Aft Stateroom Dbl Berth Under Storage**



**Grand Banks 42 - Aft Stateroom Dbl Berth**



**Grand Banks 42 - Aft Stateroom Port Side Berth**



**Grand Banks 42 - Aft Stateroom Storage Cabinet**



**Grand Banks 42 - Aft Stateroom Door to Aft Deck**



**Grand Banks 42 - Aft Stateroom Exterior Door**





**Grand Banks 42 - Aft Stateroom Stairs to Salon**



**Grand Banks 42 - Main Head & Shower**



**Grand Banks 42 - Forward V-berth**



**Grand Banks 42 - Forward V-berth A-C Vent**



**Grand Banks 42 - Forward V-berth Stairs to Salon**



**Grand Banks 42 - Forward V-berth Privacy Door**



**Grand Banks 42 - Forward V-berth Overhead Hatch**



**Grand Banks 42 - Engine Room A-C Systems**



**Grand Banks 42 - Forward Guest Head**



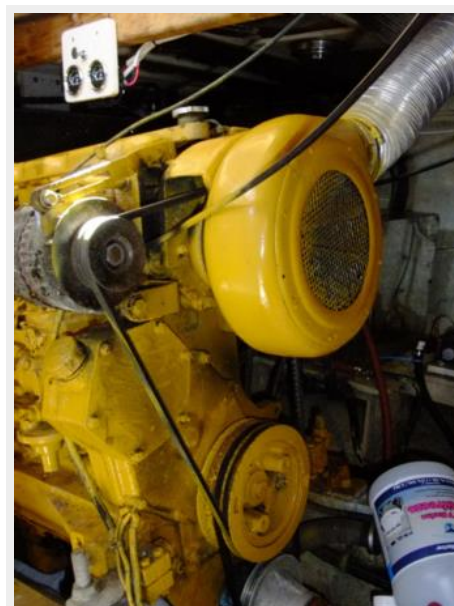
**Grand Banks 42 - Forward Guest Head Sink**



**Grand Banks 42 - Forward Guest Head 2.**

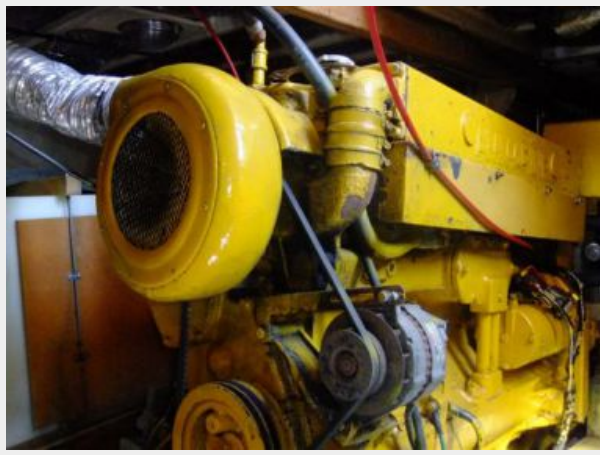


**Grand Banks 42 - Engine Room Port Engine**





**Grand Banks 42 - Engine Room STBD  
Engine to Aft**



**Grand Banks 42 - Engine Room STBD  
Engine**



**Grand Banks 42 - Engine Room Generator**



**Grand Banks 42 - Engine Room HW Heater**



**Grand Banks 42 - Engine Room New Fuel Tank Port Side**



**Grand Banks 42 - Engine Room New Fuel Tank STBD Side**



**Grand Banks 42 - Engine Room Fuel Gauges**



**Grand Banks 42 - Engine Room Battery Bank**



**Grand Banks 43 - Engine Room Battery Charger**



**Grand Banks 42 - Forward Profile on the Hard**



**Grand Banks 42 - STBD Profile**



# КОНТАКТЫ

---

Андрей Шестаков (Andrey Shestakov) – ведущий яхтенный брокер отдела продаж яхт и судов компании Shestakov Yacht Sales Inc. Официальный представитель Shestakov Yacht Sales Inc. для русскоговорящих клиентов в центральном офисе компании в Майами/Форт Лодердейл/Флорида/США.

## Контактная информация

---

Email: [andrey@shestakovyachtsales.com](mailto:andrey@shestakovyachtsales.com)

Web: [shestakovyachtsales.com](http://shestakovyachtsales.com)

## Телефоны

---

Краснодарский край: **+7(918)465-66-44**

США, Майами, Флорида: **+1(954)274-4435**

## Время работы

---

Понедельник – Суббота: **9:00 - 21:00**  
EDT

Воскресенье: **Закрето**

## Адрес

---



Harbour Towne Marina, 850 NE 3rd St,  
STE 213, Dania, FL 33004