

OUTLAW — TIARA



Builder: TIARA

Year Built: 2005

Model: Cruiser

Price: PRICE ON APPLICATION

Location: United States

LOA: 36' 0" (10.97m)

Beam: 13' 0" (3.96m)

Max Draft: 3' 8" (1.12m)

Our experienced yacht broker, Andrey Shestakov, will help you choose and buy a yacht that best suits your needs **Outlaw — TIARA** from our catalogue. Presently, at Shestakov Yacht Sales Inc., we have a wide variety of yachts available on our sale's list. We also work in close contact with all the big yacht manufacturers from all over the world.

If you would like to buy a yacht **Outlaw — TIARA** or would like help answering any questions concerning purchasing, selling or chartering a yacht, please call **+1(954)274-4435**

TABLE OF CONTENTS

TABLE OF CONTENTS	2
SPECIFICATIONS	5
Overview	5
Basic Information	5
Dimensions	5
Speed, Capacities and Weight	6
Accommodations	6
Hull and Deck Information	6
Engine Information	6
DETAILED INFORMATION	7
Highlights	7
Cockpit - Upper & Lower	7
Helm Area	8
Salon	8
Dinette	9
Galley	9
Master Stateroom	9
Head	9
Electrical Room	10
Engine Room	10
Hull & Deck	11
Exclusions	11
Exclusions	11
Disclaimer	11
PHOTOS	12
Salon	12
Galley	12
Salon dinette	12

Port salon couch	12
Port couch - pullman berth	12
Spare engine parts	12
Salon	13
Salon TV	13
Shorepower panel	13
Generator panel	13
Distribution panel	13
Galley	13
Galley pantry	14
Galley	14
Cabin bilge access	14
Master berth	14
Master stateroom	14
Storage below forward berth	14
Master Stateroom ClosetDSCN6336	15
Master Stateroom Closet	15
Head	15
Master stateroom TV	15
Helm	16
Helm seat	16
Helm	16
Electronics	16
New switches at helm	16
SAT TV system	16
Companion seating	17
Upper cockpit carpet	17
Drink cooler below seat	17
Storage compartment	17

Dedicated cockpit stereo	17
EPIRB	17
Windlass, anchor & spotlight	18
Windshield cover	18
Sunpad area	18
AFT cockpit	18
Starboard cockpit seating	18
Seat covers	18
Seat covers	19
Port cockpit seating	19
Fold away cockpit table	19
Drop curtains	19
DSCN6304	19
Cockpit wet bar	19
Fresh and raw water wash down	20
Cockpit shade and drop curtains	20
Custom cockpit shade	20
Large swim platform	20
Transom storage locker	20
Transom storage	20
Starboard engine	21
Port engine	21
Kohler 8KW generator	21
Oil exchanger	21
CONTACTS	22
Contact details	22
Telephones	22
Office hours	22
Address	22

SPECIFICATIONS

Overview

The 3600 Tiara Sovran is a high quality express model with a hardtop, enclosed helm and forward cockpit. She is equipped with a dedicated marine AC for the forward cockpit and helm. Complete electronics package includes GPS plotter, radar, autopilot, digital depth, and VHF radio. Lots of seating for family and friends and custom shade for the aft cockpit. The aft cockpit has aft facing seating to port and starboard and table that folds away when not in use. A large swim platform and huge transom locker provide easy boarding access and abundant storage. Below deck is a spacious cabin and rich teak cabinetry with solid teak and holly sole. Forward is a private stateroom with centerline queen size berth and two hanging lockers plus storage below the berth. The fully functional galley includes everything you need to prepare meals for the family. The large L shaped settee to starboard also converts into an extra berth and features a beautiful high gloss teak and birds eye maple table. To port is a large ultra leather couch that also converts to a Pullman berth. A private head with vanity, marine head and shower complete the cabin layout. This vessel has been maintained at high level with a detailed maintenance log and is virtually turn key ready.

Basic Information

Category: Cruiser

Model Year: 2005

Year Built: 2005

Country: United States

Registration #: 1188734

Coast Guard #: 1188734

Vessel Top: Hardtop

Cockpit: Yes

Dimensions

LOA: 36' 0" (10.97m)

Beam: 13' 0" (3.96m)

Max Draft: 3' 8" (1.12m)

Clearance: 12' 0" (3.66m)

MFG Length: 36' 0" (10.97m)

Speed, Capacities and Weight

Displacement: 23900 Pounds

Water Capacity: 105 Gallons

Holding Tank: 40 Gallons

Fuel Capacity: 326 Gallons

Accommodations

Total Cabins: 1

Hull and Deck Information

Hull Material: Fiberglass

Engine Information

Manufacturer: Cummins

Model: 6CTA

Engine Type: Inboard

Fuel Type: Diesel

DETAILED INFORMATION

Highlights

- Helm AC
- Custom 3 piece prop curtain
- Custom AFT cockpit shade
- Maintenance log
- Fresh bottom paint - March 2017
- Engine service December 2016
- Super Clean
- New AFT cockpit upholstery

Cockpit - Upper & Lower

- Wet bar w/ refrigerator
- Curved companion seat w/ ice box
- Cockpit air conditioning
- 3 piece drop curtain
- Hard enclosure system to helm area
- Cockpit shower, hot and cold
- Fresh and raw water wash down
- Cockpit courtesy lighting
- Molded steps port and starboard
- Pop out cleats
- Large swim platform
- Power actuated transom locker
- Swim ladder
- Fold away aft cockpit table
- Covers for all seats
- Custom aft cockpit shade
- Dual transom entry
- Power helm seat
- Map/chart storage
- Dedicated Clarion AM/FM/CD/Bluetooth Stereo
- Cockpit speakers with subwoofer
- Upper cockpit carpet
- Storage below all seats
- Power actuated engine access
- Power windshield vent
- Hardtop with over head lights
- EPIRB

Helm Area

- Raymarine C-120 Chartplotter /Radar/GPS
- Raymarine ST60 digital depth
- Raymarine ST8001 Autopilot
- ICOM VHF - IC- M324- G - NEW
- Raymarine 4kW closed array radar - 48 mile
- ACR remote spotlight control
- Clarion remote stereo control
- Air conditioning vents
- Windshield wipers and washers
- Stainless steel Destroyer wheel
- Compass
- KVH - SAT TV system
- Dual Cummins digital displays
- New switches at helm
- Helm cover
- Double wide, power seat with cover
- Dual binnacle controls
- Rudder angle indicator
- Windless controls

Salon

- Teak step treads
- L-lounge - converts to double sleeper
- High gloss table with birds eyes maple insert
- Teak cabinets throughout
- Storage under seats
- Port couch converts to Pullman berth
- Overhead storage cabinets
- Opening port lights stainless steel with screens
- 15" flat screen TV w/ DVD
- Bose stereo system w/ bluetooth
- Privacy curtain
- Entry door with screen
- Hanging locker pantry
- Teak and holly flooring
- Accent lighting
- Overhead lighting
- Ultra leather upholstery
- Dedicated reverse cycle marine AC

Dinette

- Teak & birds eye maple table
- Storage under settee
- Storage shelf
- Adjustable table pedestal
- Ultra leather seating
- Coverts to double berth
- 110 Volt GFCI outlet

Galley

- Corian counter tops
- Stainless steel undermount sink w/ corian cover
- Upper storage cabinets - teak
- Microwave oven
- 2 burner electric stove w/ cover
- Refrigerator
- Faucet w/ spray handle
- Vent fan
- Lower storage cabinet
- Pantry storage
- Under cabinet lighting
- 110 Volt GFCI outlet

Master Stateroom

- Island berth w/ inner spring mattress
- Privacy door and panel
- Reading lights
- Under cabinet lighting
- Overhead latch
- Upper hullside cabinet storage
- Below berth storage
- 13" Flat screen TV
- Dedicated 7,000 BTU Air conditioning - reverse cycle
- 110 volt GFCI outlet

Head

- Corian counter top

- Vanity w/ sink
- Under counter storage
- Upper medicine cabinet
- Vent fan
- Macerator for overboard discharge
- Opening port light
- Vacu - flush head
- Mirror
- Towel bar
- Privacy door
- Shower
- 110 volt GFCI outlet

Electrical Room

- Glendinning engine synchronizer
- Generator w/ sound shield - Kohler 8KW - 490 hrs
- Dual 30 AMP power chords
- Cable TV inlet
- Battery charger
- Battery parallel system
- High output alternators
- Water heater
- Distribution panel
- Bonding system
- 6 Batteries

Engine Room

- Twin Cummins diesels 480 HP - 583 hrs
- Freshly serviced in December 2016
- Fresh water cooled engines
- Spare filters, impellers, etc for engine
- Hydraulic engine hatch
- Day hatch
- Engine room lighting
- Racor fuel filters
- Sea water strainers
- Fire suppression system
- Dripless shaft seals
- 2 battery banks
- Seas cocks - 7

- Oil change system
- Macerator system
- Very clean engine room

Hull & Deck

- Custom boot strip & accent strip
- 316L SS bow rail
- Spring cleats
- Tiara non-skid decks
- Sun pads for foredeck
- New bottom paint - March 2017
- Spare props
- Windshield cover

Exclusions

- Personal Items

Exclusions

Owner's personal belongings.

Disclaimer

The Company offers the details of this vessel or yacht in good faith but cannot guarantee or warrant the accuracy of this information nor warrant the condition of the vessel. A buyer should instruct his representatives, agents, or his surveyors, to investigate such details as the buyer desires validated. This vessel or yacht is offered subject to prior sale, price change, or withdrawal without notice.

PHOTOS

Salon



Galley



Salon dinette



Port salon couch



Port couch - pullman berth



Spare engine parts



Salon



Salon TV



Shorepower panel



Generator panel



Distribution panel



Galley



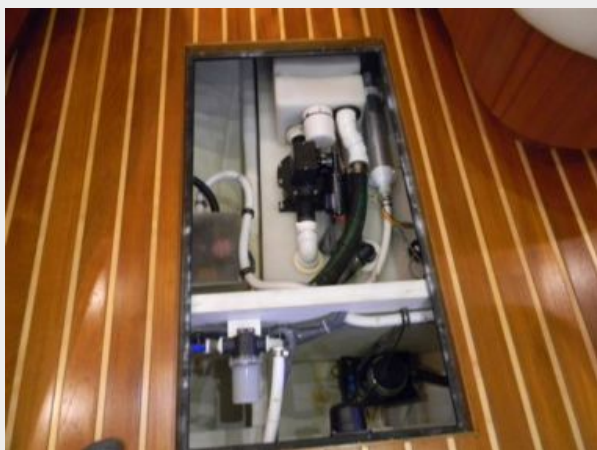
Galley



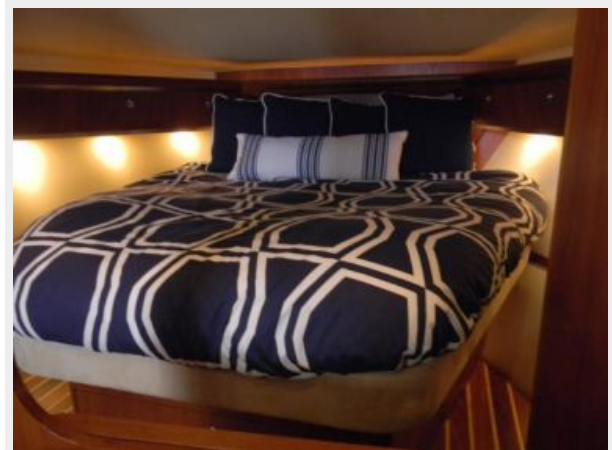
Galley pantry



Cabin bilge access



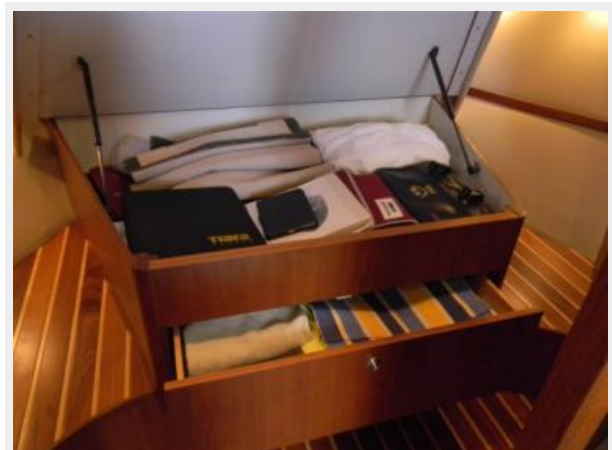
Master berth



Master stateroom



Storage below forward berth



Master Stateroom ClosetDSCN6336

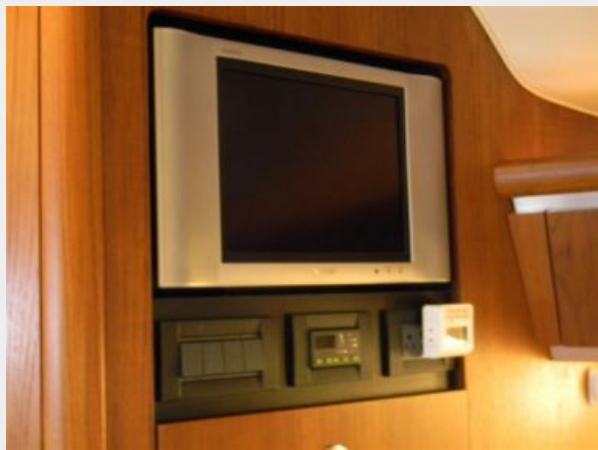


Master Stateroom Closet



Head

Master stateroom TV



Helm



Helm seat



Helm



Electronics



New switches at helm



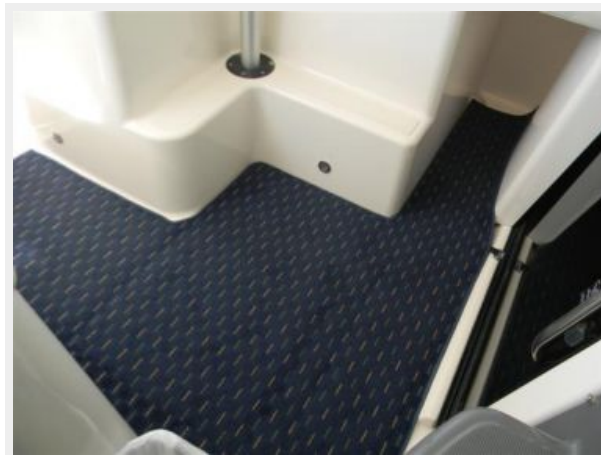
SAT TV system



Companion seating



Upper cockpit carpet



Drink cooler below seat



Storage compartment



Dedicated cockpit stereo



EPIRB



Windlass, anchor & spotlight



Windshield cover



Sunpad area



AFT cockpit



Starboard cockpit seating



Seat covers



Seat covers



Port cockpit seating



Fold away cockpit table



Drop curtains



DSCN6304



Cockpit wet bar



Fresh and raw water wash down



Cockpit shade and drop curtains



Custom cockpit shade



Large swim platform



Transom storage locker



Transom storage



Port engine



Starboard engine



Kohler 8KW generator



Oil exchanger



CONTACTS

Andrey Shestakov, leading yacht broker of the sales department of Shestakov Yacht Sales Inc. Shestakov Yacht Sales Inc., the official representative of the Miami/Fort Lauderdale FL headquarters.

Contact details

Email: andrey@shestakovyachtsales.com

Web: shestakovyachtsales.com/en/

Telephones

USA: +1(954)274-4435

Office hours

Monday – Saturday: **9:00 - 21:00** EDT

Sunday: **closed**

Address



Harbour Towne Marina, 850 NE 3rd St,
STE 213, Dania, FL 33004