

ALL OR NOTHING — AZIMUT



Builder: AZIMUT

Year Built: 2011

Model: Motor Yacht

Price: PRICE ON APPLICATION

Location: United States

LOA: 72' 0" (21.95m)

Beam: 18' 3" (5.56m)

Max Draft: 7' 1" (2.16m)

Cruise Speed: 32 Kts. (37 MPH)

Max Speed: 38 Kts. (44 MPH)

Our experienced yacht broker, Andrey Shestakov, will help you choose and buy a yacht that best suits your needs **ALL OR NOTHING — AZIMUT** from our catalogue. Presently, at Shestakov Yacht Sales Inc., we have a wide variety of yachts available on our sale's list. We also work in close contact with all the big yacht manufacturers from all over the world.

If you would like to buy a yacht **ALL OR NOTHING — AZIMUT** or would like help answering any questions concerning purchasing, selling or chartering a yacht, please call **+1(954)274-4435**

TABLE OF CONTENTS

TABLE OF CONTENTS	2
SPECIFICATIONS	4
Overview	4
Basic Information	4
Dimensions	4
Speed, Capacities and Weight	4
Accommodations	4
Hull and Deck Information	5
Engine Information	5
DETAILED INFORMATION	6
2011 Azimut 72S	6
Upgrades	6
Fly Bridge	6
Pilot console	6
Deck bridge and cockpit	6
Bow	7
Stern	7
Helm Station	7
Saloon	7
Dinette	8
Galley	8
Lower deck	8
Master cabin (amidships)	8
Master head compartment	8
VIP Cabin	9
VIP head compartment	9
Guest Cabin	9
Guest Head	9

Crew Area	9
Navigation Electronics	9
Water Systems	10
Fuel System	10
Bilge System	10
Fire-Fighting System	10
Engine Room	11
Miscellaneous	11
Exclusions	11
Disclaimer	11
PHOTOS	12
CONTACTS	32
Contact details	32
Telephones	32
Office hours	32
Address	32

SPECIFICATIONS

Overview

ALL OR NOTHING is a stunning Motor Yacht with many notable features and upgrades. Step into the salon through three stainless steel doors, the room is wide open with a beautiful dinette seating 6 at the center. Her distinctive silhouette, when combined with a gorgeous ZANTE GREY hull paint that shimmers, which really will make for an admirable first impression that should serve her owner well at the docks. The gelcoated space of the engine room houses two, muscular 1,800-mhp MAN V12 common-rail diesels. Make an appointment with us today!

Basic Information

Category: Motor Yacht

Model Year: 2011

Year Built: 2011

Country: United States

Dimensions

LOA: 72' 0" (21.95m)

Beam: 18' 3" (5.56m)

Max Draft: 7' 1" (2.16m)

Speed, Capacities and Weight

Cruise Speed: 32 Kts. (37 MPH)

Max Speed: 38 Kts. (44 MPH)

Displacement: 92000 Pounds

Water Capacity: 291 Gallons

Fuel Capacity: 1200 Gallons

Accommodations

Total Cabins: 3

Hull and Deck Information

Hull Material: Fiberglass

Hull Color: ZANTE GREY

Engine Information

Engines: 2

Manufacturer: MAN

Model: 12V

Engine Type: Inboard

Fuel Type: Diesel

DETAILED INFORMATION

2011 Azimut 72S

ALL OR NOTHING is a stunning Motor Yacht with many notable features and upgrades. Step into the salon through stainless steel doors, the room is wide open with a beautiful dinette seating 6 at the center. Her distinctive silhouette, when combined with a gorgeous ZANTE GREY hull paint that shimmers, which really will make for an admirable first impression that should serve her owner well at the docks. The gel-coated space of the engine room houses two, muscular 1,800-mhp MAN V12 common-rail diesels. Make an appointment with us today!

Upgrades

Xenta Joystick FLIR Night Vision Rear facing camera Engine room camera Flybridge camera Aft deck camera Ray Marine G Series electronics Ray Marine Autopilot, Tri data, VHF And much more!

Fly Bridge

- Access from the cockpit, via a steel stairway faced in teak - Access hatch opening: hinged opening with deck hatch made in aluminium and Plexiglas. - Pilot seat for one people, with triple electric adjustment. - Navigation and mooring joystick – JMC, integrated into the pilot seat. - Coffee table. - 2 watertight speakers. - Sunbathing cushions at bow. - Stern seat. - Plexiglas windshield with stainless steel frame. - CRP roll bar, stainless steel handrail.

Pilot console

- 15" multifunctional display for engines and navigation data - 10 Carling buttons - Joystick FLAP - Joystick for navigation and mooring – JMC - Horn and navigation light controls - Ice maker cabinet, fridge unit with pull-out shower attachment - Navigation light - Searchlight - VHF second station - "mini" Raymarine keyboard

Deck bridge and cockpit

- Access through small door in the starboard side - Pulpit in stainless steel on the side bulwark - Fairleads on the bulwark - Tempered glass windows - Side watertight door for access to the gangway area on the starboard side (with electric closure and manual movement) - Stainless steel rub rail - Fuel and water fillers on the side walkways - Black water tank discharge intake on the side walkways - 2 cleats, amidships, for each side - Walkways in teak - Electric windows on the port side (helm station) - Side access doors

Bow

- 2500W winch - Anchor winch controls - Anchor peak with drainage and fender compartment - Chain washdown - Fairleads - 8 fenders - 65 kg Poolanker anchor - Anchor chain: 12mm diameter, 100m length - Hawse hole - 2 wipers on the fore windshield - 2 stainless steel cleats - Deck hatch (emergency exit) - 2 fore handrail bars for sunbathing cushions - Side windows and windshield net covers - Sunbathing cushions and glass holders

Stern

- Access to the cockpit from the bathing platform by 1 GPR stairway starboard and the retracting gangway - Cleats - Saloon access door with 4 stainless steel-crystal glass sliding shutters - Cockpit bench which converts to a sun deck using the foldaway table - Crew and engine room access - Walkways in teak - Lighting: spots on the ceiling - Two electric warping winches QUICK 1000W 24V - Teak-faced bathing platform with 600kg maximum capacity and Jet ski compartment - Tender garage with hoisting/launching gear (capacity 400 kg), emergency exit and service light - Garage door in carbon glass with hydraulic opening mechanism - Side peaks and compartments (under the cleats) - Lights on the bathing platform - Foldaway teak table with two legs - 3 m length electrohydraulic retracting gangway (160 kg maximum lifting capacity) - Shower with hot and cold water mixer - Manual telescopic bathing ladder - Emergency-battery disconnect panel with controls for: battery cut-off for services, engines, generators, engine emergency stop pushbutton, engine room fire-fighting equipment enable - Painted units inserted in the columns of the deckhouse, with peaks

Helm Station

- Direct access to the side walkway - 2 display Man with full engine information - Autopilot - Levers - Searchlight adjustment - 2 Bufalo white leather, adjustable pilot seats with electrical guide adjustment - Adjustable leather-faced steering wheel - 2 drawers adjacent to the seats - 2 handrails in the stairway area - Map reading area in the helm station - Chain meter counter - Magnetic compass - Joystick for trim tabs - Joystick for wipers - Manoeuvring joystick Xenta easy-docking - 24V + 220V electric panel - 12V cigarette lighter socket - Controls for Activation of: bow anchor winch, adjustable searchlight, navigation lights, opening roof movement - Engine ignition (synchronism function) - Engine electronic remote controls (levers) - Steering wheel faced in leather - Emergency panel to Override the Motronica system, with analogue gauge for fuel - Multitask display Motronica with Joystick NAV DRIVE: - Indicator: bow bilge, engine room and rudder drop alarms, Racor filters; grey water level; black water level; fresh water level; navigation lights; shore sockets; battery voltage; engine room fans; fuel level - 2 Raymarine displays with control touch pad - VHF

Saloon

- Carpeted floor with wood inserts - Sofa on left side (seats 3) and sofa on the right side (also seats 3) - 2 Zebrano poufs and tables with plate glass - 42" TV unit in the centre of the saloon - Zebrano furniture set - Side Venetian blinds with remote control electrical movement - Saloon door curtain

Dinette

- 1 central table to seat 6 (extends to 8). - Unit for tableware on starboard side - Unit on port side - Stairway down to lower deck - Lighting: spots on the ceiling, Led panel over the table, RGB lighting kit on side skirts - Side Venetian blinds with remote control electrical movement - Carpeted floor with wood inserts - Glass roof with UV protection and electric opening - Watertight side door for access to the helm area on the starboard side (with semiautomatic closure)

Galley

- Wooden floor - Polished steel worktop - 2 Stainless steel sinks - White lacquered units - 4-burner ceramic glass hob with stainless steel fiddle rail - Microwave oven + grill - Fridge/freezer - Dishwasher - Light well - Clear sliding door

Lower deck

- Cabin access passage with carpeted floor - Clear cabin doors - Washer-dryer - Spots - 1 handrail

Master cabin (amidships)

- 1 double bed with tilt mechanism - Mattress, pillows and bedspread - Zebrano ceilings with leather panels and RGB perimeter lights - 2 armchairs to starboard - 2 appliques on headboard - Set of Zebrano furniture - Walk-in wardrobe with clear door - Chest of drawers - Vanity unit - TV fitting - 4 drawers under TV - Spot lighting - 1 opening porthole - 12 square windows (6 per side) - 1 Emergency exit through ceiling - Access to the master bathroom through clear door - Carpeted floor - Side Venetian blinds with remote control electrical movement - 2 handrails

Master head compartment

- Tecma W.C. - 2 washbasins with gold finish and mixer - Wood top with metallic lacquered finish - Shower with mixer tap with thermostatic function - Shower cubicle with plate glass door and Zebrano wood - Wooden floor - Spot lighting and LED panels - 1 porthole that can be opened, complete with Venetian blind - 2 appliques - 1 air extractor - Chrome-plated head accessories - A/C delivery

VIP Cabin

- 1 double bed - Mattress, pillows and bedspread - Set of Zebrano furnishing items - 1 wardrobe - 2 wall cabinets - 1 drawer unit under the bed - 1 mirror - 2 appliques on headboard - Spot lighting - 2 portholes that can be opened (1 on each side) - Panoramic windows on both sides - Deck hatch leading to the sunbathing area at bow - Sliding ceiling panel to cover hatch - Head compartment entrance with clear door - TV fitting - Carpeted floor - Venetian blinds

VIP head compartment

- Tecma W.C. - Gold-finish washbasin with mixer - Wood top with metallic lacquered finish - Shower with mixer - Shower cubicle with 2 overlapping sliding shutters - Wooden floor - Spot lighting - 1 porthole that can be opened, complete with venetian blind - 2 appliques - 1 air extractor - Chrome-plated head accessories - A/C delivery

Guest Cabin

- Two single berths set out parallel - Mattresses, pillows and bedspreads - Set of Zebrano furniture - 1 unit - 1 nightstand - Drawers in front of the berths - 2 appliques - Spot lighting and LED panel - 2 portholes that can be opened - Venetian blind - TV fitting - Carpeted floor - Head compartment entrance with clear door

Guest Head

- Direct access from the guest cabin and the passageway - Tecma W.C. - Gold finish washbasin with mixer - Wood top with metallic lacquered finish - Shower with mixer - Shower cubicle with 2 overlapping sliding shutters - Wooden floor - Spot lighting - 1 porthole that can be opened complete with venetian blind - 2 appliques - 1 air extractor - Chrome-plated head accessories

Crew Area

Crew quarters - Access from cockpit - 2 rooms: a cabin for the captain and an area for the crew, with sofa bed - 1 porthole - Captain's cabin's bed - Quilt and pillows - 1 unit in captain's cabin - 1 unit in crew any thing - GPR floor in the common room (storage area) - Carpet in the cabin - Set of laminated units (black and white) **Crew head compartment** - Direct access from the crew cabin - Tecma W.C. - Mixer tap with thermostatic function - 1 tap - Shower - Shower mixer tap with thermostatic function - Head accessories

Navigation Electronics

Helm station - RAYMARINE G150 SERIE DISPLAY - RAYMARINE TOUCHPAD - LOG -

DEPTH FINDER - MOTRONICA DISPLAY + ENCODER - 6002 AUTOPILOT - ST60 TRIDATA - REXROTH LEVERS - R240 VHF - TWO 6,5' DIGITAL MAN INDICATORS - 12 V SOCKET - JOYSTICK FOR TRIM TABS / WINDSHIELD WIPER - MANOEUVRE JOYSTICK **Fly** - MULTIPUPOSE DISPLAY OF ENGINE AND NAVIGATION DATA 15' - COMPACT RAYMARINE TOUCH PAD - MANOEUVRE AND NAVIGATION JOYSTICK WITH INTEGRATED CHECKING OF ENGINES AND **PROPS** - RAYMARINE DIGITALE 48 NM ANTENNA - VHF R240E SECOND STATION - TRIM TABS JOYSTICK - FM-MP3-IPOD WATERPROOF STEREO

Water Systems

FRESH WATER SYSTEM - Stainless steel tank 1100 litres - Level sensor - Boiler 100 litres - Hot/cold shower in cockpit and fly - Cold water fitting in engine room - Fresh water for WC washing **GREY WATER TANKS** - Water discharged into tank (steel, capacity 250 l) - Offloading directly into the sea: washbasin for cockpit and crew head - Automatic/manual discharge - Discharge system 70lt/min - Level sensor **BLACK WATER TANKS** - 2 polyethylene tanks, each with a capacity of 225 l - Level sensor - Tank breathers with odour filter - Tecma WC with macerator pump - Pump to empty the tanks at sea, with manual operation - Tank emptying from mooring, with outlets on walkways. **SEA WATER SYSTEM** - Engine cooler system - Generator set cooler system - Air conditioning cooler system - Chain washdown - Fire hydrants

Fuel System

- 2 communicating tanks in steel each with a capacity of 2,400 l, in the engine room - Port tank electronic fuel level indicator in the helm station - Starboard tank sight gauge - Double Racor filters for main engines

Bilge System

- Four 24V automatic motor pumps, flow range: 240 l/min in cabin area, in engine room, auxiliaries room and steering compartment - 3-way valve on engine cooler system (emergency suction in the engine room connected to one of the two seawater intakes for the engines) - Four bilge level alarms - Aux. emergency system to empty the bilges immediately (central suction system in each airtight compartment)

Fire-Fighting System

Fire-fighting system located in the engine room: two 12 kg powder cylinders SEAFIRE FD-1300M System (OPT / STD x USA): 1 canister (gas used: FM-200) in the engine room for local discharge. SEAFIRE power unit "Engine shut down system" to switch off engines, generators, extractors and fans off automatically at the same time as the gas is discharged. - 2 hydrants (bow

and cockpit) - Closure of ventilation pipes to engine room - Closure of fuel supply to engines and generator

Engine Room

ENGINE ROOM - Access from the crew cabin, cockpit - Ventilation and extraction kit integrated into filters, air/water separators - 24V pump for changing engine and generator oil **ENGINE EXHAUST EMISSION** - Underwater exhaust system with minimum external bypass. - Discharge manifolds in stainless steel - Structural exhausts in GRP - Water/smoke separator with side exhaust for generator **VENTILATION** - Head compartment air extraction system by two 24 V extractors with controls in the VIP and owner's head compartment - Ventilation and extraction from the engine room based on two air/water filters **HYDRAULIC SYSTEM** - Pump on the starboard engine for the steering system - 24V electro-hydraulic pump for the trim tabs - 24V electro-hydraulic pump for gangway and bathing platform - 24V electro-hydraulic pump for davit - 24V electro-hydraulic pump for opening roof - 24V electro-hydraulic pump for alavara and garage door

Miscellaneous

- Mooring hooks - 8 fenders - Mooring lines (5 pieces, each 16 m in length, with a diameter of 20 mm) - Fender lines (8 pieces, each 3 m in length, with a diameter of 8 mm) - Fly-bridge cushion covers, instrument and cockpit - Mesh window covers - Set of pots, tableware, glassware and cutlery for 8 people - Towel set with Azimut brand

Exclusions

Owner's personal belongings.

Disclaimer

The Company offers the details of this vessel or yacht in good faith but cannot guarantee or warrant the accuracy of this information nor warrant the condition of the vessel. A buyer should instruct his representatives, agents, or his surveyors, to investigate such details as the buyer desires validated. This vessel or yacht is offered subject to prior sale, price change, or withdrawal without notice.

PHOTOS





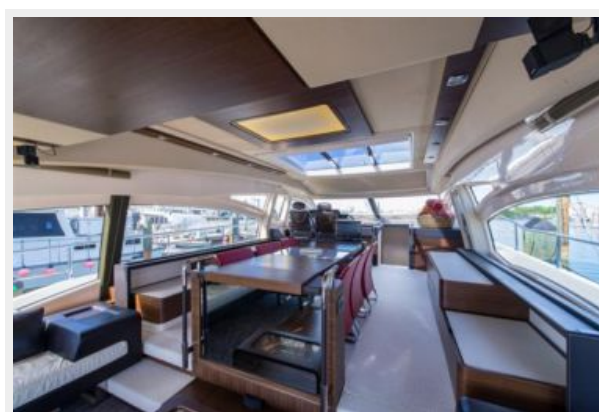
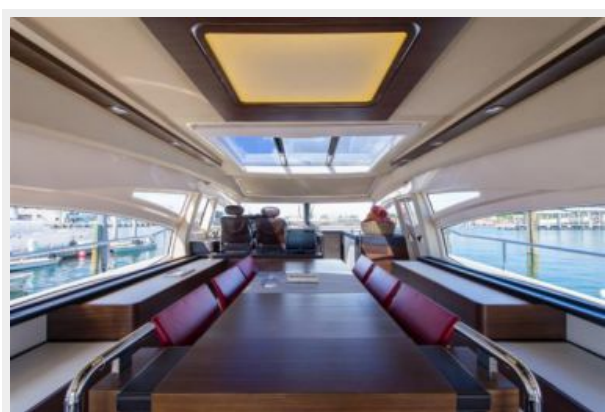
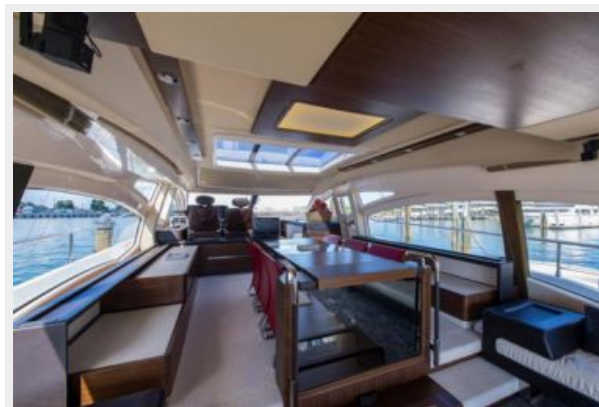




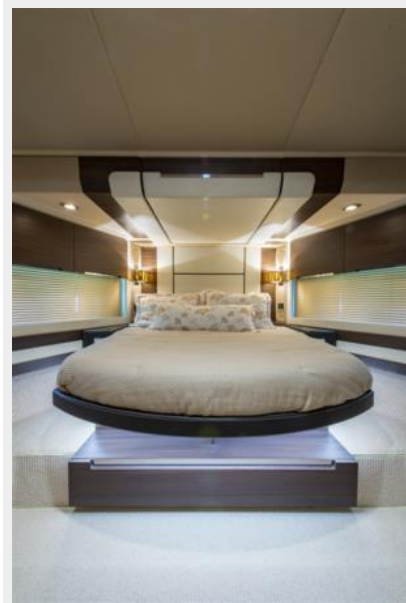


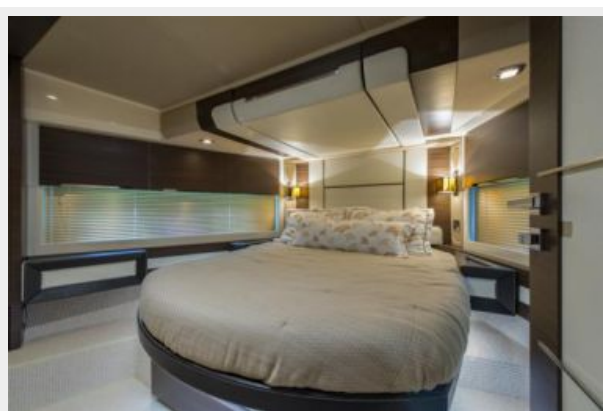
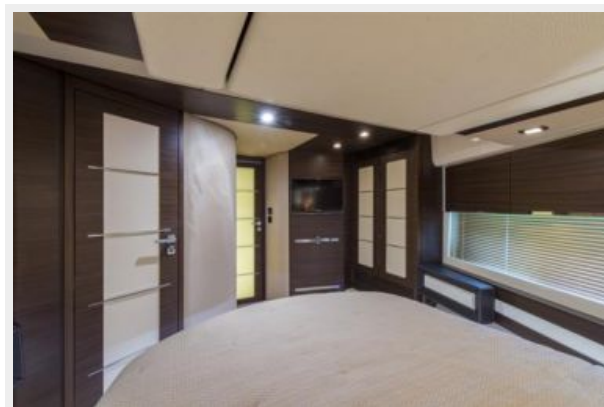
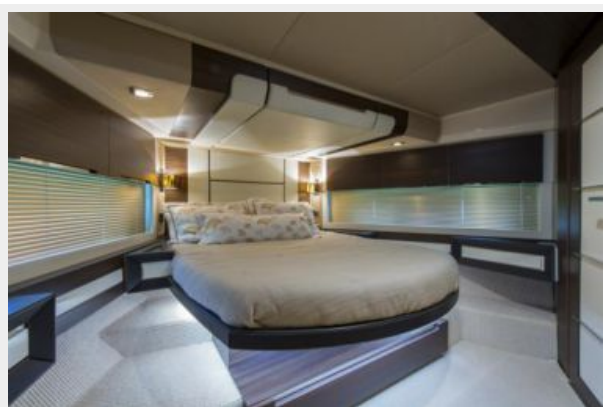






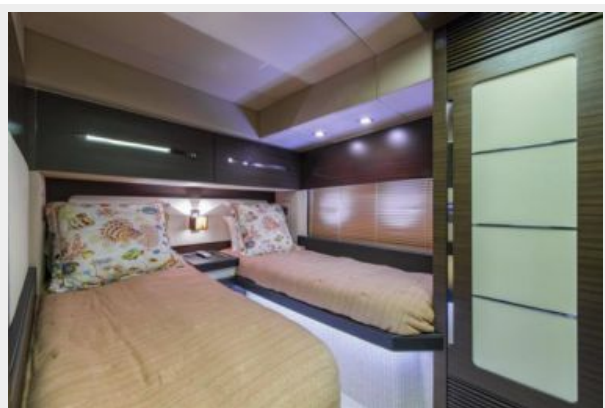




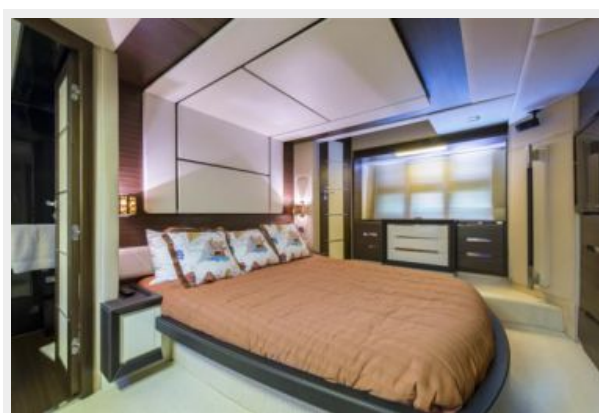




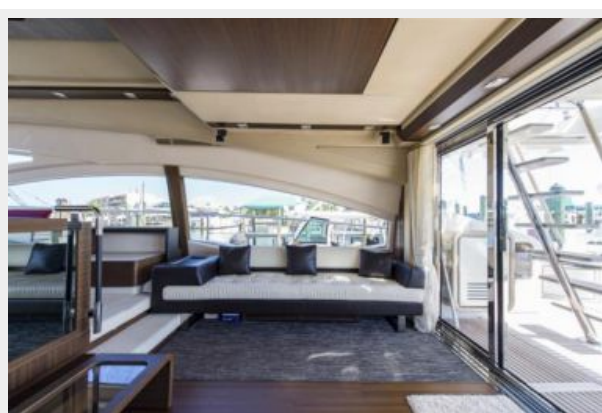
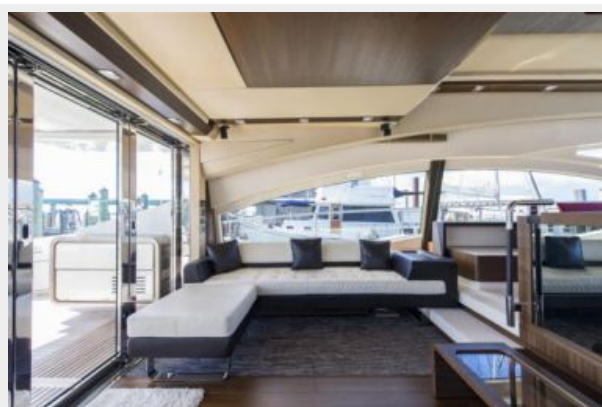




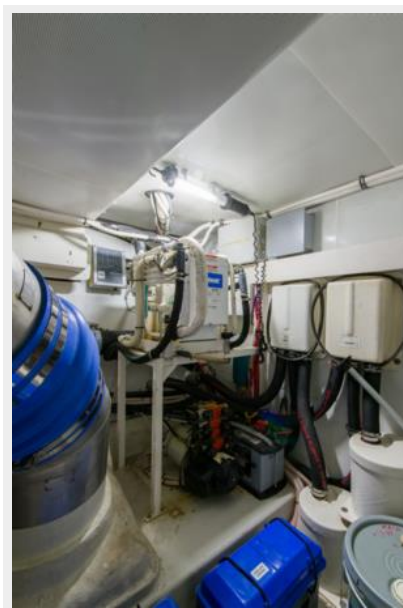












CONTACTS

Andrey Shestakov, leading yacht broker of the sales department of Shestakov Yacht Sales Inc. Shestakov Yacht Sales Inc., the official representative of the Miami/Fort Lauderdale FL headquarters.

Contact details

Email: **andrey@shestakovyachtsales.com**

Web: shestakovyachtsales.com/en/

Telephones

USA: **+1(954)274-4435**

Office hours

Monday – Saturday: **9:00 - 21:00 EDT**

Sunday: **closed**

Address



Harbour Towne Marina, 850 NE 3rd St,
STE 213, Dania, FL 33004