

## INDIGO — BRAVO YACHTS



**Судостроитель:** [Bravo Yachts](#)

**Год постройки:** 2010

**Модель:** Cruising/Racing Sailboat

**Цена:** **ЦЕНА ЯХТЫ ПО ЗАПРОСУ**

**Местонахождение:** Spain

**Длина общая:** 82' 11" (25.25m)

**Ширина:** 19' 9" (6.00m)

**Мин. осадка:** 13' 2" (4.00m)

**Крейс. скорость:** 14 Kts. (16 MPH)

**Макс. скорость:** 18 Kts. (21 MPH)

Купить **INDIGO** — **Bravo Yachts** а также выбрать подходящую вам яхту из нашего каталога яхт вам поможет опытный яхтенный брокер Андрей Шестаков. На сегодняшний день компания **Shestakov Yacht Sales Inc.** имеет большое количество яхт в собственном списке продаж, а также тесно сотрудничает со всеми крупными яхтенными производителями по всему миру.

Для того чтобы купить яхту **INDIGO** — **Bravo Yachts** а также проконсультироваться по любому вопросу связанному с покупкой, продажей, чартером яхт позвоните по телефону **+7(918)465-66-44**.

# ОГЛАВЛЕНИЕ

---

ОГЛАВЛЕНИЕ	2
ХАРАКТЕРИСТИКИ	3
Обзор	3
Основная информация	3
Размеры	3
Скорость, вместимость и масса	4
Размещение	4
Корпус и палуба	4
Информация о двигателе	4
ПОДРОБНОЕ ОПИСАНИЕ	5
GENERAL	5
Исключения	6
Отказ от ответственности	7
ФОТОГРАФИИ	8
КОНТАКТЫ	12
Контактная информация	12
Телефоны	12
Время работы	12
Адрес	12

# ХАРАКТЕРИСТИКИ

---

## Обзор

---

INDIGO was built for her current, experienced sailing owner.

The vessel is a high performance fast cruiser also suited to regatta sailing.

Following delivery new the yacht was sailing in Brazil and Caribbean area 2011.

In 2012 they crossed to the Mediterranean, visiting Palma and cruising throughout the Med (Italy, Greece etc.) and back to the Caribbean.

Since then she has cruised the South America area and San Blas islands and Caribbean – only for family use (not charter). She has competed in several races including the Recife to F. Noronha – and offshore race of 350 nm for which she beat the record, completing in less than 25 hours!

Summer 2017 INDIGO returned again to Spain – to be sold.

Her owner is now retiring from yachting.

In a recent sailing trip, during 14 hrs INDIGO sailed from Palma to Valencia, with an average speed of 10 knots, and a top speed amazing 23.9 knots ! This in a Force 7 !

## Основная информация

---

**Тип судна:** Cruising/Racing Sailboat

**Подкатегория:** Крейсерская яхта

**Модельный год:** 2010

**Год постройки:** 2010

**Страна:** Spain

**Кубрик:** Да

## Размеры

---

**Длина общая:** 82' 11" (25.25m)

**Ширина:** 19' 9" (6.00m)

**Мин. осадка:** 13' 2" (4.00m)

## Скорость, вместимость и масса

---

**Крейс. скорость:** 14 Kts. (16 MPH)

**Дальность на крейсерской скорости:**  
900

**Макс. скорость:** 18 Kts. (21 MPH)

**Водоизмещение:** 84000 Pounds

**Вместимость воды:** 301.15613928  
Gallons

**Объем топливного бака:** 385.69119592  
Gallons

## Размещение

---

**Всего кают:** 4

**Всего коек:** 8

**Спальные места:** 8

**Всего ком. состава:** 4

**Каюты экипажа:** 1

**Койки экипажа:** 2

**Комм. состав экипажа:** 1

## Корпус и палуба

---

**Материал корпуса:** Kevlar Composite

**Цвет корпуса:** White

**Дизайнер корпуса:** Javier Soto Acebal

**Дизайнер интерьера:** Bravo Shipyard

## Информация о двигателе

---

**Двигатели:** 1

**Производитель:** Yanmar

**Модель:** 4HLA 4 cylinder

**Тип двигателя:** Inboard

**Тип топлива:** Diesel

# ПОДРОБНОЕ ОПИСАНИЕ

## GENERAL

Hull and Deck construction Builder: M.L. Shipyard, Brazil. Interior: Bravo Shipyard, Brazil. Design: Javier Soto Acebal. Hull, deck and structure in Carbon fibre composite with epoxy. Topsides newly painted in AwlGrip, white, August 2016. Teak laid deck (12mm when built). Antifouling last made in summer 2017 in Valencia. Fixed keel – fin with bulb, inverted T. Elliptical balanced rudder. Cable and quadrant steering, twin pedestals. Wooden wheels Large lazarette Deck Large Teak cockpit table seats 8 Hydraulic anchor arm with fold out system. Lofrans electric windlass recessed in bow locker. Hydraulic stern platform. Deck shower aft to port. Stainless pole at transom for “Intellian” antenna. Carbon pole at stern for radar and antennas. “Pop up” mooring cleats. Stainless steel stanchions, pulpit & pushpit, life-lines with gates to port / starboard and aft. Winches (Harken) 5 x Harken 990 hydraulic self tailing 3 speed at aft cockpit: 1 mainsheet winch centrally positioned 2 winches each side, primary and secondary 2 x 3 speed electric winches, by mast, for halyards. Engine and Mechanical ENGINE Yammar 4HLA 230 hp turbo diesel 4 cylinder engine with V drive system. Approx 2000 hours at 1/6/2017 Varifold 4 blade propeller 100 Ah 24v alternator service 35 Ah 12v alternator start Range 900nm on engine 9 knots cruising speed under motor Cruising consumption 13 litres/day 14/15 knots sailing regatta speed 18 knots max sailing speed Fuel : Capacity: 1460 litres in 4 stainless steel tanks 53 litre day tank with manual selection and electric transfer motor. Fuel polishing system between tanks (or from one back to itself). Electric pump for oil changes on genset, engine and gearbox. OTHER MAIN SYSTEMS Onan Generator, 17kW installed aft of main engine. 1500 hours at 1/6/2017. Start panel at chart table. Good access in engine room for genset, engine and hydraulic system. There is also a “soft spot” in cockpit floor above genset to allow removal if required. Hydraulic power pack system for winches. MaxPower retractable hydraulic bowthruster. SeaRecovery Aquamatic water-maker 220v 260 litres/hour. Sea Mach Air conditioning – two pumps run 6 units (1 saloon, 4 cabins, and 1 crew cabin) 18-32 degrees hot/cold Plumbing and Electrical Systems PLUMBING 1140 litres fresh water in 4 stainless steel tanks Hot water – via 220v tank (from shorepower or genset), or from calorifier on engine. Pressure water hot/cold throughout 5 x Jabsco heads with fresh water flushing 2 x shower cubicle units, one each for primary guest cabins Grey water – shower sump pump tanks Black water – all toilets can go to one tank (at bow) and from there overboard or via deck outlet. ELECTRICAL Auto system for switching between generator and correct shorepower. Batteries Service batteries 24v x 24 Emergency batteries 24v x 3 Start batteries 12v x 3 ( 2 engine and 1 genset – can be connected if necessary) Electronic batteries 24v x 6 and 12v x 6 Ventilator system for batteries Multi system shorepower – 220/110v and 60/50Hz 220v and 110v outlets in the boat. Transformer. Victron 5000 W 220v inverter Victron 3000 W 110v inverter 3 x Victron Skylla 100 amp chargers (one was replaced June 2017) Multiplus 24v charger Phoenix 12v charger Hella 24v fans-galley;saloon; nav station; in each cabin. CS Nautica electric panel Promariner Corrosion Controller Smartswitch diesel tank pressure sensors VE.net battery charge monitors Promariner polarity indicator Multi alarm system, light and sound alarms for max power, battery, day tank, emergency systems etc. Fire system at navigation table Carbon monoxide alarm Master volt

panel for energy system (generator, inverter, batteries etc). Refrigeration Isotherm 24v At galley – 2 x fridges and 2 x freezers, all front loading at aft end of galley, with stainless steel doors. 1 x chest freezer at forward end of galley. Ice-maker at saloon. Navigation and Communication Systems Brookes and Gatehouse ZEUS instrument package new June 2017 B&G 4G BB RADAR KIT B&G,ZEUS BB MPU,GLOBAL BASEMAP B&G plotter, GPS and radar system B&G autopilot unit at chart table B&G H3000 unit at chart table. B&G system – plotter at helm Autopilot controls at each helm. B&G Zeus 3 screen at each helm Hercules 2000 B&G repeaters, port and starboard, in front of helm 2 x “Jumbo” repeaters at the mast B&G MFD at each helm pedestal B&G analogue wind direction repeaters in front of each helm Icom IC M802 HF radio Icom IC M422 VHF radio Iridium sat phone Icom M24 and Icom M23 hand held VHF's (2) Flatron LG screen at chart table with PC, for navigation program, Deckman system. Hatteland screen at chart table - showing navigation, radar, GPS, AIS – connected to B&G Meteo Man weather (Mb and C °) Maretron DSM 250 control unit multi display (engine, battery, nav info, GPS, speed & direction, barometer etc.) Furuno Satellite compass Sunto compass x 2 (one at each pedestal) Accommodations ACCOMMODATION Two twin guest cabins amidships with ensuite head and shower. Two upper/lower bed guest cabins forward, both ensuite. Full width Saloon. Coffee table on starboard, dining table area to port. Crew cabin aft of saloon on starboard. Galley aft of saloon on port. Galley Equipment Force 10 gas cooker with 4 burners and oven Elber horizontal freezer 24v 2 x Isotherm fridges 24v/220v 2 x Isotherm freezers 24v/220v Fischer extractor over cooker Nikai microwave oven Twin stainless steel sinks Isotherm ice maker 220v (in the saloon) aft portside Bottle storage under lifting top of the coffee table in the saloon Entertainment Samsung flat TV in the saloon starboard, connected to Bose music system and speakers. Cockpit speakers new in 2017 Sails and Rigging Carbon fibre King Composite Modulus mast Park Avenue boom in carbon fibre King Composites Rod Nitrix 50 standing rigging Harken hydraulic furling headstay for genoa (furler recessed). Manual removable furler for staysail Navtec hydraulics, with electric switches by the mainsheet winch: - Vang with quick release button at the helm - Outhaul in boom - Jib halyard, (ram on mast) - Backstays - Inner forestay Staysail halyard 2 for 1 purchase system SAILS All by North Vectran main sail – new 2016, 2 reefs (used for ocean crossing Brazil to Spain May 2017) Vectran genoa, new 2016 (used one week sailing during summer 2017) Stay sail Code 0 sail Asymmetric spinnaker (green and yellow) Rig measurements: I 29m. P 28,70m. J 6,12m. E 11m. Sail areas Genoa 132 sqm Main 157 sqm Jib 104% Asymmetric 500 sqm Accessories Flexboat SR12LX dinghy with Yamaha 20 hp engine, with cover. Safety 2 x 6 person Zodiac life rafts (2009) Next service due Dec 2017 2 x lifebuoys EPIRB Class 2 USA Canvas Bimini, new 2017 Sprayhood, new 2017 Pedestal covers, 2016 Wheel covers, 2016 Cockpit cushions Ground tackle CQR 50kg anchor with 100m chain 5/8 2 x Delta anchors 45 kg. Fortress FX 32 anchor Bauer Junior compressor. Carbon boarding gangway.

## Исключения

При продаже яхты исключаются личные вещи владельца.

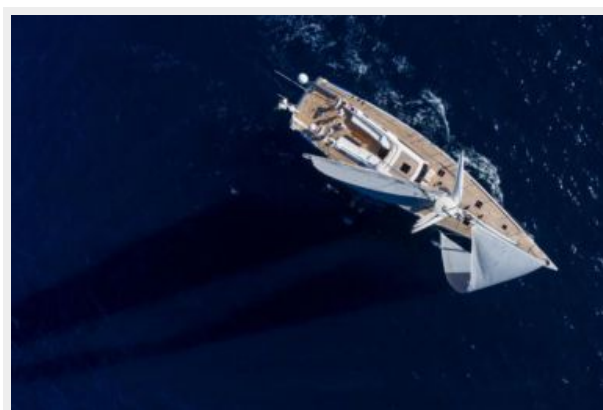
---

## Отказ от ответственности

---

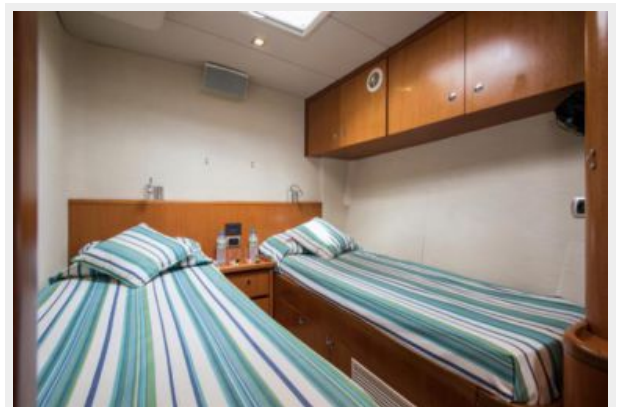
Компания предоставляет описание судна или яхты добросовестно, но не может гарантировать точность этой информации, а также не ручается за техническое состояние. Покупатель должен проинструктировать своих агентов или оценщиков исследовать представленную информацию более подробно, по собственному желанию. Продажа судна или яхты, изменение цены или снятие с продажи будет происходить без предварительного уведомления.

# ФОТОГРАФИИ











# КОНТАКТЫ

---

Андрей Шестаков (Andrey Shestakov) – ведущий яхтенный брокер отдела продаж яхт и судов компании Shestakov Yacht Sales Inc. Официальный представитель Shestakov Yacht Sales Inc. для русскоговорящих клиентов в центральном офисе компании в Майами/Форт Лодердейл/Флорида/США.

## Контактная информация

---

Email: [andrey@shestakovyachtsales.com](mailto:andrey@shestakovyachtsales.com)

Web: [shestakovyachtsales.com](http://shestakovyachtsales.com)

## Телефоны

---

Краснодарский край: **+7(918)465-66-44**

США, Майами, Флорида: **+1(954)274-4435**

## Время работы

---

Понедельник – Суббота: **9:00 - 21:00**  
EDT

Воскресенье: **Закрыто**

## Адрес

---



Harbour Towne Marina, 850 NE 3rd St,  
STE 213, Dania, FL 33004