

M90 PANACERA — HATTERAS



Судостроитель: HATTERAS

Год постройки: 2017

Модель: Моторная яхта

Цена: **ЦЕНА ЯХТЫ ПО ЗАПРОСУ**

Местонахождение: United States

Длина общая: 91' 9" (27.97m)

Ширина: 22' 6" (6.86m)

Макс. осадка: 6' 2" (1.88m)

Крейс. скорость: 20 Kts. (23 MPH)

Макс. скорость: 25 Kts. (29 MPH)

Купить **M90 Panacera — HATTERAS** а также выбрать подходящую вам яхту из нашего **каталога яхт** вам поможет опытный яхтенный брокер Андрей Шестаков. На сегодняшний день компания **Shestakov Yacht Sales Inc.** имеет большое количество яхт в **собственном списке продаж**, а также тесно сотрудничает со всеми крупными **яхтенными производителями** по всему миру.

Для того чтобы купить яхту **M90 Panacera — HATTERAS** а также проконсультироваться по любому вопросу связанному с покупкой, продажей, чартером яхт позвоните по телефону **+7(918)465-66-44**.

ОГЛАВЛЕНИЕ

ОГЛАВЛЕНИЕ	2
ХАРАКТЕРИСТИКИ	5
Обзор	5
Основная информация	5
Размеры	5
Скорость, вместимость и масса	6
Размещение	6
Корпус и палуба	6
Информация о двигателе	6
ПОДРОБНОЕ ОПИСАНИЕ	7
Exterior Finish and Construction	7
Hardware and Miscellaneous	7
Engine Compartment and Bilge	7
Electrical Systems	8
HattCON System	8
Open Flybridge	9
Bow Lounge and Foredeck	9
Aft Deck	9
Swim Platform	10
Galley	10
Salon and Dining	10
Day Head	10
Companionway	10
Master Stateroom	10
Master Head	11
Bow Stateroom	11
Port Stateroom	11
Starboard Stateroom	11

Guest Heads	11
Captain and Crew Staterooms	12
Crew Head	12
Crew Lounge	12
Provisioning Items	12
Исключения	12
Отказ от ответственности	12
ФОТОГРАФИИ	14
M90 Panacera	14
M90 Panacera	14
M90 Panacera	14
Salon	14
Salon Balcony	14
Salon	14
Formal Dining	15
Formal Dining	15
Galley	15
Galley	15
Galley dining	15
Galley	15
Day head	16
Master Stateroom	16
Master Stateroom	16
Master Stateroom	16
Master Head	17
Master Shower	17
Coffee bar outside master stateroom	17
VIP stateroom	17
VIP Head	18

Guest Stateroom	18
Flybridge	18
Flybridge	18
Flybridge	18
Flybridge	18
Crew Lounge	19
Flybridge	19
Captains cabin	19
Crew Head	19
Crew quarters	20
Engine Room	20
КОНТАКТЫ	21
Контактная информация	21
Телефоны	21
Время работы	21
Адрес	21

ХАРАКТЕРИСТИКИ

Обзор

Breakthrough design ushers in a breathtaking experience aboard the all-new Hatteras M90. The latest model to enter the Hatteras fleet, this stunning open-concept features a crisp, light-filled interior that strikes a perfect balance of dramatic form and ingenious function. The M90 incorporates an inspiring range of global design influences to create new uses of living, dining and entertaining spaces. Distinctive features include signature skylights as well as a sweeping staircase to the expansive bridge. An amazing play is created between the interior and exterior spaces, which include a modular bar on the aft deck and ample lounging space on the side decks and bow. The impact of the massive 22'6" beam is felt throughout, including in the four luxurious staterooms. Equipped with Caterpillar C32A 1925HP engines, she achieves a top speed in excess of 25 knots and a comfortable cruise at 20 knots.

Основная информация

Тип судна: Моторная яхта

Подкатегория: Flybridge

Модельный год: 2018

Год постройки: 2017

Страна: United States

Верх: Hardtop

Открытая палуба мостика: Да

Размеры

Длина общая: 91' 9" (27.97m)

Длина по ватерлинии: 76' 8" (23.37m)

Ширина: 22' 6" (6.86m)

Макс. осадка: 6' 2" (1.88m)

Скорость, вместимость и масса

Крейс. скорость: 20 Kts. (23 MPH)	Крейсерская скорость поворота: 2050 Kts.
Дальность на крейсерской скорости: 416	Макс. скорость: 25 Kts. (29 MPH)
	Макс. скорость поворота: 2300 Kts.
Водоизмещение: 230000 Pounds	Вместимость воды: 820 Gallons
Вместимость сточного бака: 420 Gallons	Объем топливного бака: 3285 Gallons

Размещение

Всего кают: 4	Спальные места: 8
Всего ком. состава: 4	Каюта капитана: Да
Каюты экипажа: 2	Койки экипажа: 3
Спальных мест экипажа: 3	Комм. состав экипажа: 2

Корпус и палуба

Материал корпуса: Fiberglass	Материал палубы: Fiberglass
Комплектация корпуса: Planing	Цвет корпуса: White
Отделка корпуса: Fiberglass	

Информация о двигателе

Двигатели: 2	Производитель: Caterpillar
Модель: C-32A 1925HP	Тип двигателя: Inboard
Тип топлива: Diesel	

ПОДРОБНОЕ ОПИСАНИЕ

Exterior Finish and Construction

• Isophthalic / NPG gel coat, exterior layer • Hull and superstructure painted with a premium linear polyester/polyurethane coating for improved cosmetics and increased durability • Polymer/copper based anti-fouling bottom paint • Boot stripe, linear polyester/urethane coating • Decks, non-skid surface, polyurethane paint with polymeric beads • Resin-infused solid fiberglass hull bottom and composite hull sides with premium vinylester resin and blister resistant gel coat below the waterline • Molded fiberglass longitudinal stringers with steel engine beds • Resin-infused bulkheads and interior decks using crosslinked foam core

Hardware and Miscellaneous

Hand crafted European Walnut with satin finish interior • Fin stabilizer system • Welded and polished stainless steel anchor chute and roller • Anchor locker • 140 lb Stainless steel plow anchor with 300 feet of acculoy hot dipped galvanized chain • Windlass; 4,500 lb hydraulic with deck mounted control switches • Freshwater anchor wash • Bow deck freshwater washdown • Hydraulic 45 HP dual prop bow thruster • Polished stainless steel cleats with through bolted-in, robust aluminum backing plates (4 Spring w/chafing strips; 2 Bow; 2 Stern) • Welded and polished stainless steel rails on bow, side decks and flybridge, with drilled and tapped, robust designed aluminum backing plates • Stainless steel rudders • Zincs on rudders and shafts • Alloy 22 high-strength propeller shafts tapered with round keys for reduced stress concentrations at propeller and coupling ends • Manganese bronze dripless rudder seals • Dripless shaft seals • Manganese bronze struts • Manganese bronze engine couplings • Nibral high performance custom propellers • Sea Stair ladder with dedicated storage • Walk around side decks with LED courtesy lighting • Stainless steel deck fills for fuel, water, and waste pump-out • 1800 GPD watermaker • LED underwater lights (2) • Safe, Owner located • Chilled water air conditioning, (3) 5-ton, with reverse-cycle heating and soft starting AC compressors • Electric hydraulic power steering with dual rams for individual rudder angle control for better handling • Cordless Portable Vacuum w/mounting brackets (2)

Engine Compartment and Bilge

Water manifold blocks with centralized shut-off valve for sinks and showers • Polyethylene water lines • Fiberglass rudder shelf bolted to aluminum plates in stringers • AC fluorescent lights • DC LED lights • DC exhaust blower • Twin diesel engines, freshwater-cooled with electrically controlled marine gears, neutral interlocks, exhaust silencers, engine hour meters, alternators, fuel filters and seawater strainers • FM200 fixed fire extinguishing system for engine/generator compartment with automatic and remote manual controls, plus audible and visual discharge signals • Two AC ventilation fans • Two 40kW freshwater-cooled generators with shock mounts, sound enclosure, remote start, seawater strainer, fuel/water separator, hour meter, and water lift

muffler with exhaust gas separator • AC tubeaxial exhaust discharge fan for engine room • Electric fuel transfer system with filtration and dry tank protection for pump(s) • Freshwater fill hose for engines and generators • AC compressed air system and regulator accessory connection • Dockside water inlet with pressure regulating valve and automatic dockside tank fill • 24-volt DC bilge and sump pumps with heavy-duty float switches and protective guards • Auxiliary emergency bilge pumps • Bronze/chrome ball-valves through-bolted in solid fiberglass on all underwater through hull fittings with electrical bonding • Pressurized freshwater pump with backup pump • (1) 50 gallon & (1) 30 gallon 230-volt AC electric water heaters • Fiberglass fuel tanks constructed with fire-retardant resin and bronze fittings • Fiberglass water tanks, constructed with bronze fittings • Fiberglass holding tank, constructed with bronze fittings and 24-volt DC sewage pump, plumbed for dockside pump-out • Fiberglass gray water tanks with sewage pump, plumbed for dockside pump-out • Oil changing system for engines, generators and gears • Fuel filter/water separator for engines & generators • Electric fuel priming pumps, engines • Finished engine room and bilges • USCG approved fuel lines • Centralized drain system with single thru-hull • Insulation in salon deck for sound mitigation • Sea chests for raw water pick up • Digital monitoring for main engines • Engine start / stop switches and hour meter • Rubber deck mat between engines • Engine room air intake demisters

Electrical Systems

• Two 24 volt banks of heavy-duty, 12 volt marine batteries mounted in fire retardant fiberglass boxes • Tin-coated wiring with insulation, labeled and color coded • Automatic battery charger • Automatic battery paralleling system with switch located at helm • Two 100 amp retractable shore cords with polarization transformers and wireless remote control • DC LED lights throughout accommodation areas • AC duplex outlet(s) with ground fault protection throughout • Battery control panel with fuses and isolation switches located in engine room • AC and DC distribution panels with magnetic circuit breakers • AC switching panel with source selector switches, volt meter, ammeter, frequency meter, generator start/stop controls, and distribution panel selector switches with low voltage boost function • LED Navigation lights • Omni-directional TV antenna • Smoke detectors and carbon monoxide detectors

HattCON System

• New proprietary HattCON Yacht Management System: seamless and intuitive interface includes fully integrated navigation, ship management and yacht automation. Includes SMS and email alert functionality. **Ship Management:** Four multi-function touch helm displays Surface mounted display foil with integrated controls Finger print reader ignition protection with digital passcode backup **Integrated camera system:** Night Vision Camera Pan Tilt Zoom engine room camera Dual Pan Tilt Zoom aft deck cameras **Fully integrated navigation and ship management:** Including navigation, radar, chart, sounders, and autopilot Electric power steering alarm monitor Rudder angle indicator Synchronized console illumination Hydraulic system controls integration Navigation lights control and monitoring Light controls, interior and exterior Lumishore underwater light integration Chiller controls Watermaker controls Dual VHF radios

Systems Monitoring: Bilges Smoke, fire, and Co detection Tankage levels Engine and propulsion data Autopilot integration w/rudder angle feedback Generator data AC power DC power Battery charger Door and hatch open alarms Fuel tank level gauges at deck fills Yacht Automation: Two 10" integrated multi-function touch display (Galley and Crew) with controls for lights, HVAC, smart glass control, and access to HattCON full Ship Management and System Monitoring Wall mounted auto dimming touch screens placed in convenient locations with HattCON App accessible features: Interior lights on/off/dim HVAC controls Smart glass control Exterior lights Lumishore multi-color light control Master all-off light switch (password protected) with exit timer Motion detection control of low level lights in heads Window blinds control (optional) HattCON iPhone/iPad app fully configurable with dual profiles: Master / Captain profile with access to main system Guest profile with access to guest stateroom light / HVAC control and limited access to main system

Open Flybridge

- Fiberglass hardtop with acrylic enclosure, overhead LED lighting, mast and anchor light
- Air conditioning, 48,000 BTU capacity with reverse cycle
- Tinted windscreen
- Port and starboard molded seating with cushions and cover
- Grill island includes double grill, refrigerator, and storage
- Wetbar includes sink, refrigerator, icemaker and storage
- Tinted windscreen
- Welded and polished stainless-steel grab rails
- Powered sliding door with stairs to interior accommodations
- Audio system with Bluetooth capabilities
- Molded fiberglass steps with hatch and DC lights to aft deck
- Freshwater wash down outlet
- Retractable 40" class TV
- Adjustable helm seats with covers (2) to starboard and large L-shaped riding seat with storage to port
- Electric power steering with programable differential steering, turn angles, rate of turn, and helm resistance

Bow Lounge and Foredeck

- King size sunpad with cover, integrated into the superstructure
- Fore and aft facing bow seating with table
- Large molded-in storage locker below sunpad
- Premium stereo speakers
- Discrete lighting
- Stainless steel bow rail for safety and security
- Concealed windlass and anchor chute
- Hydraulic lift-up hatch for access to windlass and chain locker
- Fresh water outlet

Aft Deck

- Molded bench seating with cushions and cover
- Molded fiberglass steps with lights to flybridge
- Molded fiberglass steps with lights to swim platform, port and starboard
- Stainless steel gates from aft deck to swim platform
- Boarding gates, port and starboard side decks
- Audio system with speakers and subwoofer
- AC duplex outlet with ground fault protection
- DC LED overhead lighting
- Access door with interior stairwell to crew's quarters/engine room
- Teak table with cover
- Teak deck, natural finish
- Bar cabinet with sink, faucet, refrigerator and icemaker

Swim Platform

• Freshwater wash down outlet • Hot/cold integrated shower • Pop-up cleats (2) • Watertight door to crews area and engine room • Dockside water inlet with pressure regulating valve • Reboarding ladder to swim platform

Galley

• Wood flooring • Inserts to match interior finish on appliance fascia • Dinnette with table • Stone countertops and backsplash • Center island with stone countertops with storage and sink • Microwave/convection oven • Refrigerator with freezer and icemaker • Four-burner induction cooktop • Stainless range hood with exterior venting • Integrated coffee maker • Garbage disposal • Dishwasher • Oven • Wine cooler • Panoramic skylight with smart glass • Pantograph door, with lock, to side deck - port and starboard • USB charging ports

Salon and Dining

• Fixed frameless windows with tinted safety glass • Upholstered panels and finished wood bulkheads • Wood flooring with area rug • Privacy blinds • Automatic opening, stainless-steel sliding door to aft deck • Buffet cabinet • 48" class LED TV • Home Theater Entertainment system with Blu-ray player and WiFi capability • Furnishings including sofa, armchairs (2), end tables (2), cocktail table, dining table and dining chairs • HVAC control integrated with HattCON • Bar with refrigerator, icemaker, and bottle/glass storage • Stairway to flybridge • USB charging ports

Day Head

• Tile Flooring • Wallcovering • Vanity with sink • Mirror • Towel ring and tissue holder • Freshwater toilet • Ventilation fan • Holding tank 3/4 full indicator light • Motion sensing light

Companionway

• Carpeting • Fabric headliner installed on track system • Lighted stairway to main deck • Laundry room with washer, dryer and linen storage • Service bar with stone top and backsplash

Master Stateroom

• Carpeting • King-sized berth with cedar-lined storage underneath & Upholstered headboard • Bunk cover, decorative shams and throw pillows • Premium mattress, bunk cover, pillows, shams and linens • Cedar-lined closet with light • Nightstands • Dressers, port and starboard • 40" class LED TV • Home Theater Entertainment system • Portlights with privacy blinds • HVAC control • Smoke and carbon monoxide detector • Fabric headliner with hardwood border • USB charging

ports

Master Head

• Stone/tile flooring • Wallcovering • Stone countertops, backsplashes, and sidesplashes with sinks • Stone/tile shower with frameless glass door, rainhead shower, seat, and dimmable, laminated smart-glass portlight • Full Height and width mirror above vanity • Base cabinets with storage • Towel bar, towel ring, tissue holder, and robe hooks • Freshwater toilet • Ventilation Fan • Holding tank 3/4 full indicator lights • Sconce above vanity

Bow Stateroom

• Carpeting • Queen sized berth with upholstered headboard and cedarlined storage underneath • Premium mattress, bunk cover, pillows, shams and linens • Cedar lined closets port and starboard with automatic light • Nightstands • 40" class TV • Entertainment system • Port lights with window coverings, port and starboard • HVAC control • Smoke and carbon monoxide detector • Emergency hatch to bow deck • USB charging ports

Port Stateroom

• Carpeting • Twin berths, one sliding, with upholstered headboard • Premium mattress, bunk cover, pillows, shams and linens • Cedar lined closet with drawers and light • Nightstand • 26" class TV • Entertainment system • Full-length mirror • Port light with window covering • HVAC control • Smoke and carbon monoxide detector • USB charging ports

Starboard Stateroom

• Carpeting • Twin berths, one sliding, with upholstered headboard • Premium mattress, bunk cover, pillows, shams and linens • Cedar lined closet with drawers and light • Nightstand • 26" class TV • Entertainment system • Full-length mirror • Port light with window covering • HVAC control • Smoke and carbon monoxide detector • USB charging ports

Guest Heads

• Stone/tile flooring • Wallcovering • Stone countertop, backsplash and sidesplash with sink • Stone/tile shower with frameless glass door • Mirror • Base cabinet with storage • Towel bar, towel ring, tissue holder, and robe hooks • Freshwater toilet • Ventilation fan • Holding tank 3/4 full indicator light

Captain and Crew Staterooms

• Durable engineered wood flooring • Over-under crew stateroom, full berth captain stateroom • Premium mattress, bunk cover, pillows, shams and linens • Cedar lined hanging lockers with automatic light, nightstand below • 20" class LED TV • Entertainment System • DC LED dimmable lights • AC duplex outlets • HVAC control • Smoke and carbon monoxide detector • USB charging ports

Crew Head

• Durable engineered wood flooring • Wallcovering • Solid-surface countertop with sink and storage cabinet • Shower • Mirror • Freshwater toilet • Ventilation fan • Holding tank 3/4 full indicator light

Crew Lounge

• Durable engineered flooring • Abbreviated galley including microwave/convection oven, refrigerator, sink and storage • Lounge seating with stow-away table • Stairs from aft deck • Door to engine room with window • Watertight door from swim platform • Washer and dryer • USB charging ports

Provisioning Items

• Stern staff • Braided nylon mooring lines (6) • Fenders (4) • Life jackets (12) • Life ring (2) • Flare gun with flares • First aid kit • Boat Hook • Two - 8 person life rafts with hydrostatic release on deck, in compliance with United States Coast Guard and ABYC standards • Portable 15.5 lb Halotron-1 (2), 2.5lb dry-chem (7) and 10 lb dry-chem (9) Fire Extinguishers • Prop removal and installation tool • Tool set • Water delivery kit with spare electrical and mechanical components • Recommended cleaning supplies for care of your new yacht • Allowance for custom furnishings such as sofa, dining table, cocktail table(s), chair(s), end table(s), and accessories • Allowance for linens such as, sheets and towel sets • Allowance for dining items such as, china, crystal and flatware

Исключения

При продаже яхты исключаются личные вещи владельца.

Отказ от ответственности

Компания предоставляет описание судна или яхты добросовестно, но не может гарантировать точность этой информации, а также не ручается за техническое

состояние. Покупатель должен проинструктировать своих агентов или оценщиков исследовать представленную информацию более подробно, по собственному желанию. Продажа судна или яхты, изменение цены или снятие с продажи будет происходить без предварительного уведомления.

ФОТОГРАФИИ

M90 Panacera



M90 Panacera



M90 Panacera



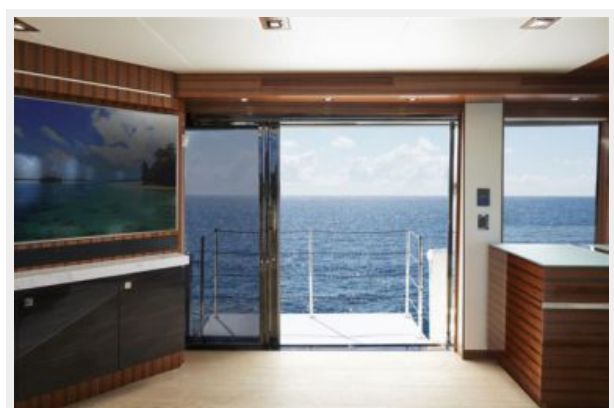
Salon



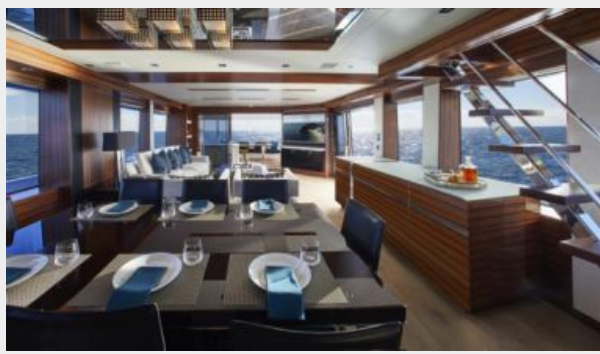
Salon



Salon Balcony



Formal Dining



Formal Dining



Galley



Galley



Galley



Galley dining



Day head



Master Stateroom



Master Stateroom



Master Stateroom



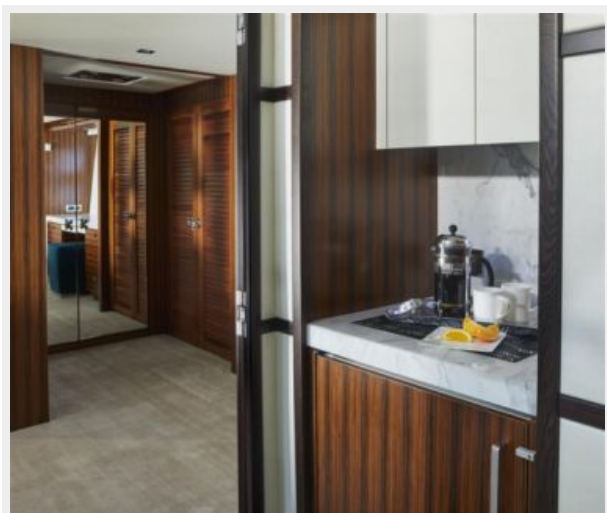
Master Head



Master Shower



Coffee bar outside master stateroom



VIP stateroom



VIP Head



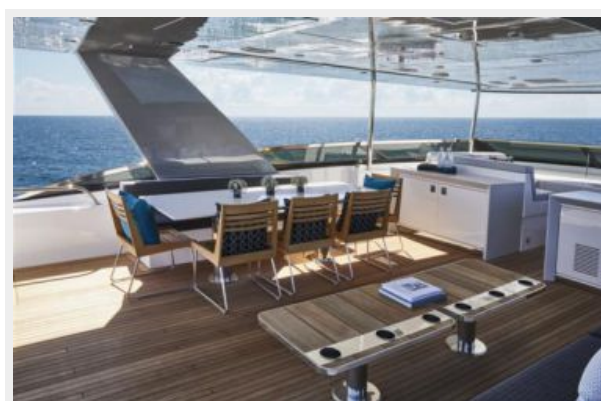
Guest Stateroom



Flybridge



Flybridge



Flybridge



Flybridge



Flybridge



Crew Lounge



Captains cabin



Crew Head



Crew quarters



Engine Room



КОНТАКТЫ

Андрей Шестаков (Andrey Shestakov) – ведущий яхтенный брокер отдела продаж яхт и судов компании Shestakov Yacht Sales Inc. Официальный представитель Shestakov Yacht Sales Inc. для русскоговорящих клиентов в центральном офисе компании в Майами/Форт Лодердейл/Флорида/США.

Контактная информация

Email: andrey@shestakovyachtsales.com

Web: shestakovyachtsales.com

Телефоны

Краснодарский край: **+7(918)465-66-44**

США, Майами, Флорида: **+1(954)274-4435**

Время работы

Понедельник – Суббота: **9:00 - 21:00**
EDT

Воскресенье: **Закрето**

Адрес



Harbour Towne Marina, 850 NE 3rd St,
STE 213, Dania, FL 33004