

## O TASTE AND SEA — VIKING



**Судостроитель:** VIKING

**Год постройки:** 2013

**Модель:** Катер для спортивной рыбалки

**Цена:** ЦЕНА ЯХТЫ ПО ЗАПРОСУ

**Местонахождение:** United States

**Длина общая:** 50' 0" (15.24m)

**Ширина:** 17' 0" (5.18m)

**Макс. осадка:** 4' 10" (1.47m)

Купить O TASTE AND SEA — VIKING а также выбрать подходящую вам яхту из нашего каталога яхт вам поможет опытный яхтенный брокер Андрей Шестаков. На сегодняшний день компания Shestakov Yacht Sales Inc. имеет большое количество яхт в собственном списке продаж, а также тесно сотрудничает со всеми крупными яхтенными производителями по всему миру.

Для того чтобы купить яхту O TASTE AND SEA — VIKING а также проконсультироваться по любому вопросу связанному с покупкой, продажей, чартером яхт позвоните по телефону **+7(918)465-66-44**.

# ОГЛАВЛЕНИЕ

ОГЛАВЛЕНИЕ	2
ХАРАКТЕРИСТИКИ	5
Обзор	5
Основная информация	5
Размеры	5
Скорость, вместимость и масса	6
Размещение	6
Корпус и палуба	6
Информация о двигателе	6
ПОДРОБНОЕ ОПИСАНИЕ	7
Salon	7
Galley	7
Companionway	8
Master Stateroom/Midship/Starboard	8
Master Head	8
Guest Stateroom/Forward	9
Guest Head	9
Cockpit	9
Fishing Equipment	10
Flybridge/Helm	10
Electronics	11
Deck and Hull	11
Engine and Mechanical Equipment	12
Electrical	12
Exclusions	13
Исключения	13
Отказ от ответственности	13
ФОТОГРАФИИ	14

Starboard Profile	14
Featured Fiberglass Stairway	14
Salon	14
Salon	14
Salon	14
Salon	14
Salon	15
Salon	15
Salon	15
Salon Entrance	15
Galley	15
Galley Island	15
Galley Cabinets	15
Companionway	15
Master Stateroom	16
Master Stateroom	16
En-Suite Master Head	16
Master Stateroom	16
Master Head	16
Master Head and shower	16
VIP Twin Bunk Forward	17
VIP Twin Bunk Forward	17
Port Twin Bunks	17
Port Guest Head	17
Port Guest Head	18
Washer and Dryer Port Stateroom	18
Helm	18
Garmin Electronics	18
Teaser Reels	18

---

Single Lever Controls	18
Helm Chairs	19
132 sq ft of Cockpit	19
Release Marine Fighting Chair	19
Aft Running Shot	19
Mezzanine Seating	19
Wide Walkways	19
Three Bow Hatches	20
Bow	20
Windlass	20
Radar and Trac Vision 7	20
Engine Room	20
Engine Room	20
Engine Room	21
Engine Room	21
Engine Room	21
Onan Generator	21
Port profile	21
50 Viking Aerial View 6	21
50 Viking Aerial View	21
Running Shot	21
<b>КОНТАКТЫ</b>	<b>22</b>
Контактная информация	22
Телефоны	22
Время работы	22
Адрес	22

---

# ХАРАКТЕРИСТИКИ

## Обзор

\*Man Engines 1000 Hour Service Completed Nov-2017

\*Engine Room Detail & Waxed Nov-2017

\*Salon & 3 Staterooms Carpet Steam-Cleaned Nov 2017

\*Detail Wax/ Brite Work (rub rail up) Nov 2017

\*Generator Full Service Oct 2017

Viking 50' Convertible 2013 Best In Class Sport-fish. Three Staterooms – Two En-suite Heads with separate showers. Custom dealer package, Master Amidship with full size custom headboard. Garmin Electronics, and Release Marine Fighting chair.

## Основная информация

**Тип судна:** Катер для спортивной рыбалки

**Подкатегория:** Convertible

**Модельный год:** 2013

**Год постройки:** 2013

**Страна:** United States

**Регистрационный номер:** 1262616

**Номер регистрации в береговой охране:** 1262616

## Размеры

**Длина общая:** 50' 0" (15.24m)

**Длина по ватерлинии:** 50' 0" (15.24m)

**Длина палубы:** 50' 0" (15.24m)

**Ширина:** 17' 0" (5.18m)

**Макс. осадка:** 4' 10" (1.47m)

**Длина привального бруса:** 50' 0" (15.24m)

---

## Скорость, вместимость и масса

---

**Водоизмещение:** 66500 Pounds

**Вместимость воды:** 174 Gallons

**Вместимость сточного бака:** 54 Gallons

**Объем топливного бака:** 1200 Gallons

---

## Размещение

---

**Всего кают:** 3

---

## Корпус и палуба

---

**Материал корпуса:** Fiberglass

---

## Информация о двигателе

---

**Производитель:** MAN

**Модель:** V-12

**Тип двигателя:** Inboard

**Тип топлива:** Diesel

---

# ПОДРОБНОЕ ОПИСАНИЕ

---

## Salon

---

- Designer carpet- Beige w/ full canvas runner
- Leather l-shaped sofa to port-Beige w/ throw pillows
- Storage below sofa
- Leather settee forward w/ table
- Teak divider end table between sofa and settee w/ storage
- High gloss teak throughout
- High gloss teak strips in headliner
- Cruisair A/C w/ digital controls
- A/C vents in teak valance
- Teak & upholstered lambrequins
- Large aft window w/ tinted glass
- Overhead lighting
- Teak coffee table
- Silhouette blinds
- Electrical panel
- Entertainment center- Bose tuner & SAT receiver
- Drawer & cabinet storage
- Storage behind TV at companionway entry
- 120V outlets
- Stereo speakers
- Samsung 42" flat screen TV w/ SAT TV
- Salon Camera
- First Mate Salon Door Damper

## Galley

---

- Sub Zero below counter Refrigerator & Freezer drawers (4)
- Island galley w/ Corian counter top and storage
- Bar stools for island galley
- Corian counter top w/ molded sink & Grohe faucet
- Kenyon 3 burner stove top
- Sharp SS Carousel microwave/convection oven
- Pullout over sliding drawers w/ teak face
- Overhead lighting
- Silhouette blind
- Amtico laminate floor
- 120V outlets

---

## Companionway

---

- Designer beige carpet w/ canvas runner
- Storage under step
- High gloss teak strips in whisper wall coverings
- Overhead storage at companionway entry which houses Bose tuner
- Central vacuum outlet
- Electrical sub panel at companionway entry
- Privacy doors to staterooms and head

---

## Master Stateroom/Midship/Starboard

---

- Island queen bed
- Designer bedding & pillows
- Carpet- beige
- Storage under bed as well as drawer space
- Drawer & cabinet space
- Hanging locker
- Overhead hatch w/ Ocean Air screen/blind
- Overhead lighting
- Designer wallpaper
- Reading lights
- End tables w/ designer lamps
- Overhead speakers
- Samsung flat screen TV w/ SAT TV
- 120V outlet w/ GFI
- Cruisair AC w/ digital controls
- En-suite head
- Custom headboard

---

## Master Head

---

- Dometic toilet
- Corian counter top w/ molded sink & Grohe faucet
- Vanity w/ storage below
- Mirrored medicine cabinet
- Designer towel rack
- Amtico flooring
- Stall shower w/ bench
- Designer wallpaper
- 120V outlet
- Exhaust fan



- A/C vent

---

## Guest Stateroom/Forward

---

- Over/under bunks to port w/ storage below
- Designer bedding & pillows
- Carpet
- Overhead hatch w/ Ocean Air screen/blind
- Drawer & Cabinet space
- Designer wallpaper
- Tall hanging locker
- Overhead lights
- Cruisair A/C w/ digital controls & vent
- En-suite head

---

## Guest Head

---

- Dometic toilet
- Corian counter top w/ molded sink & designer Grohe faucet
- Vanity w/ storage below
- Mirrored medicine cabinet
- Designer towel rack
- Overhead hatch w/ Ocean Air screen/blind
- Amtico flooring
- High gloss teak vanity face
- High gloss teak privacy door
- Stall shower
- 120V outlet
- Exhaust fan
- A/C vent

---

## Cockpit

---

- Mezzanine Freezer
- Transom door w/ gate
- Mezzanine w/ cushions
- Rod holders in gunwale (4)
- Rod holders on haunches (4)
- Tackle drawers – Under Stairway

- Entrance to engine room in mezzanine
- Fiberglass Stairway to Bridge
- Fish boxes in sole
- Nonskid deck
- Hawse pipes
- Courtesy lights under gunwales
- Lazarette Hatch – Steering Ram
- Cockpit scuppers - Stainless
- Step box storage - portside
- 24v Hubbell receptacle under coaming starboard side
- Heavy duty cleats
- Refrigerated step box
- Oil change system plumbed to cockpit
- Livewell in sole
- Custom Viking on deck livewell plumbing (2)
- Custom seawater manifold – by Viking South

## Fishing Equipment

---

- US-9HD 24 Volt Teaser Reels Ha6-Tri-Lock Pulleys/Ronstan Pulleys
- Rupp triple spreader outriggers
- Transom door w/ gate
- Transom bait well
- Rod holders on gunwale
- Fish boxes in sole
- Tackle center
- Release Marine Fighting Chair/5 Hole Contour Launcher/Tackle Drawer/Two Drink Holders

## Flybridge/Helm

---

- Fire suppression system (engine room)-Sea Fire Control
- Emergency shutdown- port -starboard buttons
- Rupp Reel Rocket Launchers (6)
- Release helm chairs
- Factory hardtop with molded-in quartz lights
- MAN engine displays
- Costa Clear three sided enclosure
- Garmin Electronics package
- Teak pod w/ single lever shifters
- Side seating & forward seating of helm w/ storage below
- Reversible jump seat backrest on starboard side

- Aft and Aux 1 - fuel tank gauges
- Insulated drink box forward to port - refrigerated
- ZF emergency backup controls
- Ritchie 6" compass
- Electrical panel for electronics
- JBL speakers
- Electronic trolling valves
  
- Electronic single lever controls
- Moritz monitor

## Electronics

---

- ICOM IC-M604 VHF radios (2)
- Garmin Touchscreen 7215 (2)
- Intermarine cameras Engine Room - Salon
- Garmin Auto Pilot
- Garmin Remote Auto Pilot
- KIVIH Tracvision – KVHTrac 7 - SATV
- Dolby Direct TV Receivers (2)
- Garmin Sonar
- ZF Smart Command
- FURUNO RD30
- Garmin Radar/Weather

## Deck and Hull

---

- Lewmar V2 Stainless Steel Windlass
- Blue bottom paint
- Blue boot stripe
- Transom door w/ gate
- Hatches (3)
- Hatch forward at bow w/ wash down
- Heavy duty cleats
- Trim tabs
- Nonskid deck
- Transom box
- Painted rub rail white
- Fiberglass side thru hulls
- Bow Pulpit
- Awlgrip Lazarette
- Awlgrip Forward Bilge and Anchor locker

- Magnetic switches for all bilge lights

## Engine and Mechanical Equipment

---

- Twin MAN CRM 1360 HP diesel engines 1025 hours
- Onan 21.5 kW diesel generator – 1328 hours
- Remote RPM gauges at entrance engine room
- AC compressors
- Dripless shaft logs
- Overhead lights
- Chargemaster battery chargers - (2) New chargers FEB 2017 100 amp & 60 amp
- Delta T engine room vent system
- Battery switches
- Start stop switches for engines
- Fuel priming switches
- Grundfos water pump
- Water filter
- Glendenning cable master
- Engine room blowers
- Seafire fire suppression system
- Racor fuel filters
- Oil change system to cockpit
- Hot water heater
- Bonding system
- Bilge pumps
- Hydraulic steering system
- High water bilge alarm
- Emergency crash pumps
- All pumps painted snow white exclude fresh water pump

## Electrical

---

- 50 amp shore cord
- 8 D batteries
- Battery charger
- Battery switches
- Battery parallel
- 12V/24V/110V/240V system
- Electrical outlets
- Electrical panels

## Exclusions

---

Owners personal property

## Исключения

---

При продаже яхты исключаются личные вещи владельца.

## Отказ от ответственности

---

Компания предоставляет описание судна или яхты добросовестно, но не может гарантировать точность этой информации, а также не ручается за техническое состояние. Покупатель должен проинструктировать своих агентов или оценщиков исследовать представленную информацию более подробно, по собственному желанию. Продажа судна или яхты, изменение цены или снятие с продажи будет происходить без предварительного уведомления.

# ФОТОГРАФИИ

**Starboard Profile**



**Featured Fiberglass Stairway**



**Salon**



**Salon**



**Salon**



**Salon**



**Salon**



**Salon**



**Salon**



**Salon Entrance**



**Galley**



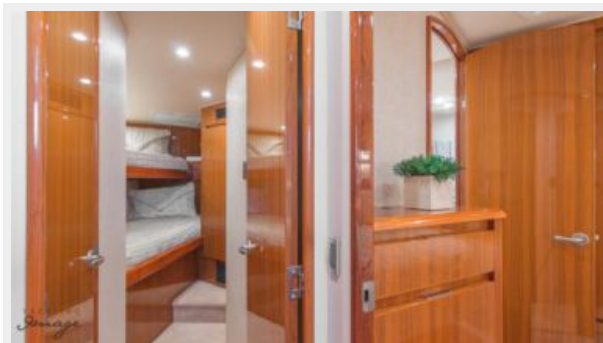
**Galley Island**



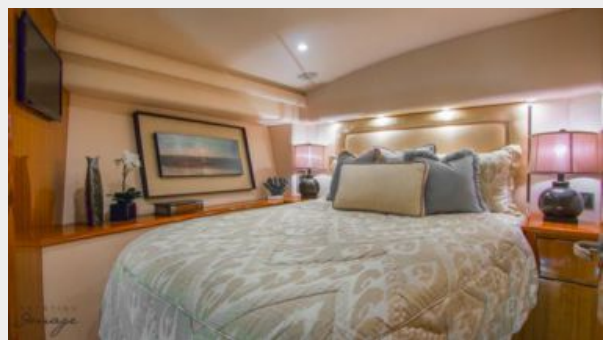
**Galley Cabinets**



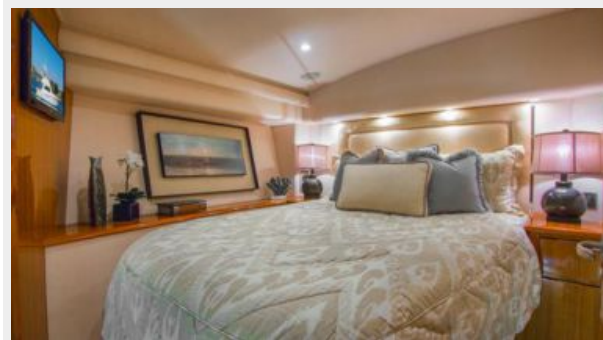
**Companionway**



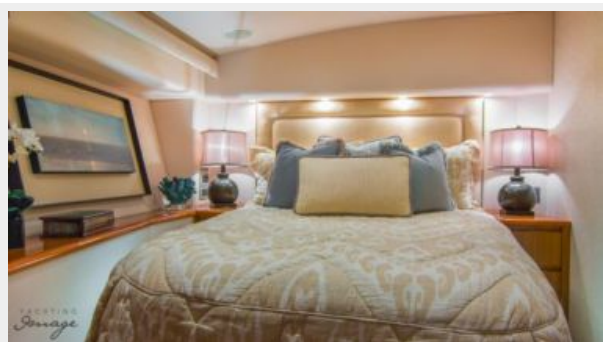
**Master Stateroom**



**Master Stateroom**



**Master Stateroom**



**En-Suite Master Head**



**Master Head**



**Master Head and shower**

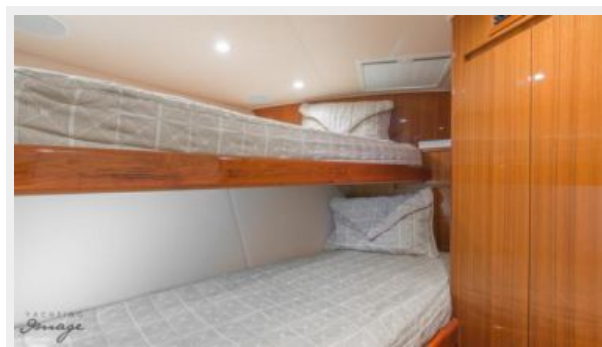




### VIP Twin Bunk Forward



### VIP Twin Bunk Forward



### Port Twin Bunks



### Port Guest Head



**Port Guest Head**



**Washer and Dryer Port Stateroom**



**Helm**



**Garmin Electronics**



**Teaser Reels**



**Single Lever Controls**



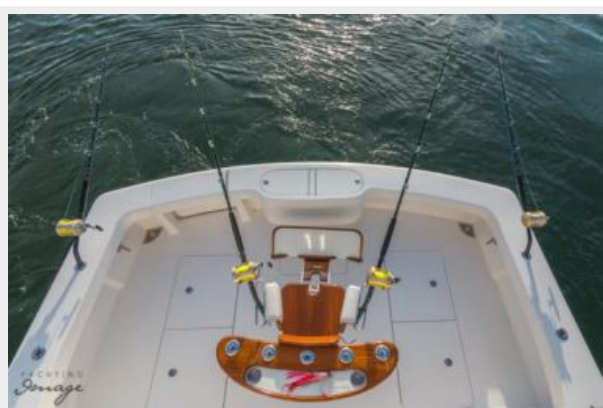
**Helm Chairs**



**132 sq ft of Cockpit**



**Release Marine Fighting Chair**



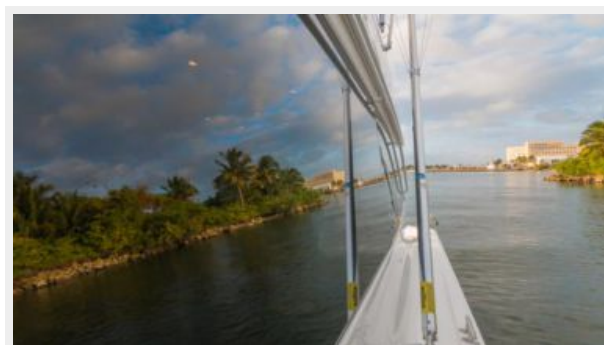
**Aft Running Shot**



**Mezzanine Seating**



**Wide Walkways**



### Three Bow Hatches



### Bow



### Windlass



### Radar and Trac Vision 7



### Engine Room



### Engine Room



**Engine Room**



**Engine Room**



**Engine Room**



**Onan Generator**



**Port profile**



**50 Viking Aerial View 6**



**50 Viking Aerial View**



**Running Shot**



# КОНТАКТЫ

---

Андрей Шестаков (Andrey Shestakov) – ведущий яхтенный брокер отдела продаж яхт и судов компании Shestakov Yacht Sales Inc. Официальный представитель Shestakov Yacht Sales Inc. для русскоговорящих клиентов в центральном офисе компании в Майами/Форт Лодердейл/Флорида/США.

## Контактная информация

---

Email: [andrey@shestakovyachtsales.com](mailto:andrey@shestakovyachtsales.com)

Web: [shestakovyachtsales.com](http://shestakovyachtsales.com)

## Телефоны

---

Краснодарский край: **+7(918)465-66-44**

США, Майами, Флорида: **+1(954)274-4435**

## Время работы

---

Понедельник – Суббота: **9:00 - 21:00**  
EDT

Воскресенье: **Закрыто**

## Адрес

---



Harbour Towne Marina, 850 NE 3rd St,  
STE 213, Dania, FL 33004