

NO KID N — LAZZARA



Builder: LAZZARA

Year Built: 1999

Model: Motor Yacht

Price: PRICE ON APPLICATION

Location: United States

LOA: 76' 0" (23.16m)

Beam: 19' 0" (5.79m)

Max Draft: 4' 6" (1.37m)

Cruise Speed: 21 Kts. (24 MPH)

Max Speed: 24 Kts. (28 MPH)

Our experienced yacht broker, Andrey Shestakov, will help you choose and buy a yacht that best suits your needs **No Kid N — LAZZARA** from our catalogue. Presently, at Shestakov Yacht Sales Inc., we have a wide variety of yachts available on our sale's list. We also work in close contact with all the big yacht manufacturers from all over the world.

If you would like to buy a yacht **No Kid N — LAZZARA** or would like help answering any questions concerning purchasing, selling or chartering a yacht, please call **+1(954)274-4435**

TABLE OF CONTENTS

TABLE OF CONTENTS	2
SPECIFICATIONS	4
Overview	4
Basic Information	4
Dimensions	4
Speed, Capacities and Weight	4
Accommodations	5
Hull and Deck Information	5
Engine Information	5
DETAILED INFORMATION	6
Recent Upgrades	6
Salon	6
Galley	7
Day Head	8
Lower Foyer	8
Master Stateroom	8
Master Head	8
Guest VIP, Port	9
Guest VIP Head, Port	9
Guest VIP, Starboard	9
Guest VIP Head, Starboard	10
Forward Lower Area	10
Captains Quarters	10
Captains Quarters Head	11
Guest Stateroom, Forward	11
Guest Stateroom Head, Forward	11
Aft Deck	11
Transom Area	12

Skybridge Electronics	12
Skybridge Area	12
Upper Aft Deck	13
Engine Room	13
Electrical	13
Exclusions	14
Disclaimer	14
PHOTOS	15
CONTACTS	29
Contact details	29
Telephones	29
Office hours	29
Address	29

SPECIFICATIONS

Overview

1999 76' Lazzara Skylounge

The 76 Lazzara, "No Kid N", is a wide body skybridge Lazzara that has a lot of nice features starting with 5 staterooms and 6 heads, which includes the day head, large full body salon, spacious sky bridge, walk in engine room, dual davits on aft bridge and a teak aft deck!! Great for large families and even charter. This yacht recently moved to Baltimore for the summer, where the owners, both being licensed captains, will use her to cruise the Chesapeake. recently reduced and best 76 Lazzara on the market, it is ready for inspection. If you are in the market for a nice motor yacht, please make an appointment to see No Kid N this summer!

Basic Information

Category: Motor Yacht

Sub Category: Motor Yacht

Model Year: 1999

Year Built: 1999

Country: United States

Fly Bridge: Yes

Dimensions

LOA: 76' 0" (23.16m)

Beam: 19' 0" (5.79m)

Max Draft: 4' 6" (1.37m)

Speed, Capacities and Weight

Cruise Speed: 21 Kts. (24 MPH)

Max Speed: 24 Kts. (28 MPH)

Displacement: 89000 Pounds

Water Capacity: 350 Gallons

Holding Tank: 150 Gallons

Fuel Capacity: 1700 Gallons

Accommodations

Total Cabins: 5

Total Berths: 7

Sleeps: 8

Total Heads: 6

Hull and Deck Information

Hull Material: Fiberglass

Engine Information

Engines: 2

Manufacturer: MTU

Model: 12V183TE

Engine Type: Inboard

Fuel Type: Diesel

DETAILED INFORMATION

Recent Upgrades

- New port generator 430 hrs
- New wesmar hydraulic oversized stabilizers
- Starboard gen 5800 hrs
- Both pod cylinders rebuilt
- AC pump replaced
- Water maker pump replaced
- All sump pumps replaced
- All 3 battery chargers replaced
- **1999 dingy new tubes/ new 60 hp motor 2015**
- Davit cables replaced
- Twin 7215 garmins
- 6 ft open array radar garmin
- Stainless marine exhaust replaced both motors
- 8 new AC units replaced
- Water heater
- Buck booster
- Spare 5 blade props
- 48 volt bow thruster upgrade
- 10 flat screen TVs
- All ceiling panels
- Sky lounge sofa
- Master room sofa
- Both washer/dryers replaced
- New non skid lower plat form
- KVH sat dish
- 6 toilets electric type

Salon

- Carpet w/ runner
- Upgraded décor
- Birdseye maple accent throughout
- Designer coffee table
- U shaped sofa
- Upholstered valances
- Refrigerator
- Dinette w/ 6 chairs
- Stairs to master stateroom and both VIP's

- Blinds
- Overhead lighting
- Overhead speakers
- Entertainment center
- Samsung flat screen TV w/ SAT TV receiver box
- Heavy duty SS salon door
- Cabinet space for storage
- Large windows
- Electrical outlets
- Cruisair climate control
- Storage for stemware/flatware and dishware forward of dinette
- Birdseye Maple accent throughout

Galley

- Popular Country Kitchen layout
- Laminate wood flooring
- Side doors
- Pantry
- Day head
- Dinette
- Molded steps to bridge
- Double stainless steel sinks w/ designer faucet
- KitchenAid upright refrigerator/freezer
- GE Profile microwave/convection over
- GE dishwasher
- Kenmore stove
- KitchenAid 4 burner cook top
- KitchenAid trash compactor
- Blinds
- Central vacuum
- Electrical outlets
- Garbage disposal
- Overhead storage
- Drawer space storage
- Storage under sink
- Forward window w/ screens
- Overhead lighting
- Bar stools at counter tops
- Toshiba TV in overhead swivel cabinet
- Electrical panel
- Steps down to forward foyer

Day Head

- Pedestal sink
- Designer faucet
- Electric toilet- NEW
- Granite flooring
- Mirror
- Wallpaper
- Towel rack
- Exhaust fan

Lower Foyer

- Carpeted steps down to foyer
- Bosch washer/dryer
- Large closet space
- Haier wine cooler
- Refrigerator
- Art display area
- Overhead lighting

Master Stateroom

- Full beam master/amid ship
- King bed
- Bedding & pillows
- Carpet
- Mirrored headboard
- His/her drawer space
- Settee
- Nightstands
- Cruisair SMX II climate control
- Large walk in closet
- Panasonic flat screen TV w/ SAT receiver
- Stereo & entertainment center
- Overhead lighting
- Port holes w/ blinds
- Reading lights
- Birdseye Maple accent throughout

Master Head

- Granite counter top
- Large tub/shower
- Extended vanity w/ his/her sinks & designer faucets
- Large mirror
- Electric toilet- NEW
- Exhaust fan
- Towel racks
- Tile floor
- Storage under sinks w/ drawer space
- Towel closet

Guest VIP, Port

- Queen bed
- Bedding & pillows
- Hanging closet
- Drawer space under bed
- Carpet
- Port holes w/ blinds
- Overhead lights
- Reading lights
- Samsung 22" flat screen TV w/ SAT receiver
- Stereo w/ speakers
- Cruisair SMX II climate control
- Birdseye maple accent throughout
- En-suite head

Guest VIP Head, Port

- Electric head- NEW
- Corian counter top w/ recessed sink
- Mirror
- Stall shower
- Tile floor
- Towel rack
- Towel closet
- Overhead lighting
- Exhaust fan

Guest VIP, Starboard

- Queen bed
- Bedding & pillows
- Hanging closet
- Drawer space under bed
- Birdseye Maple accent throughout
- Samsung 22" flat screen TV w/ SAT receiver
- Port holes w/ blinds
- Cruisair SMX II climate control
- En-suite head

Guest VIP Head, Starboard

- Electric head- NEW
- Corian counter top w/ recessed sink
- Mirror
- Stall shower
- Tile floor
- Towel rack
- Towel closets
- Overhead lighting
- Exhaust fan

Forward Lower Area

- Carpet
- Bosch washer/dryer
- Captain's desk
- Closet space
- Courtesy lights
- Port holes w/ blinds

Captains Quarters

- Twin bed
- Bedding & pillows
- Carpet
- Drawer storage
- Hanging locker
- Settee
- TV
- Visio 22" flat screen TV w/ SAT receiver

- Overhead lighting
- Overhead hatch

Captains Quarters Head

- Electric head- NEW
- Corian counter top
- Designer faucet
- Stall shower
- Tile flooring
- Overhead lighting
- Towel racks
- Exhaust fan

Guest Stateroom, Forward

- Upper/lower bunks
- Bedding & pillows
- Carpet
- Port holes w/ blinds
- Overhead lighting
- Drawer storage under bed
- Hanging locker
- Nightstand
- Samsung flat screen TV w/ SAT receiver
- En-suite head

Guest Stateroom Head, Forward

- Electric head- NEW
- Corian counter top w/ recessed sink
- Designer faucet
- Exhaust fan
- Stall shower
- Tile flooring
- Towel racks

Aft Deck

- Teak decks

- Uline refrigerator
- Raritan icemaker
- 42' flat screen TV
- Corian counter top
- Settee port and starboard
- Walk through to transom/engine room access
- Canvas covers for all seats
- Side doors P & S
- Overhead lights & speakers
- Camera
- Fold out table
- Ladder to bridge

Transom Area

- Teak decks
- Access to engine room
- Pod garage doors for PWC/ storage
- Swim platform
- Aft railings

Skybridge Electronics

- Garmin 7215 screens (2)
- Garmin radar
- Garmin Chart plotter
- Garmin GMI 10 (2)
- Simrad AI 50
- Northstar 6100i chartplotter
- ISIS system
- Furuno FCV 582 color sounder
- Simrad AP20 autopilot
- Icom VHF radios
- Shipmate speaker

Skybridge Area

- Stidd helm chairs
- Upholstered L lounge
- Carpet & wood laminate flooring
- Electrical panel

- Coffee table
- Samsung 42" flat screen TV w/ SAT receiver
- SS heavy duty sliding door
- Horn
- Desk area w/ drawer space
- AC w/ vents
- Spotlight remotes
- Wesmar stabilizer controls
- Blinds
- Uline refrigerator

Upper Aft Deck

- Twin davits
- SS rails
- Hatch to stairwell to lower aft deck
- Dinghy w/ cradle
- 14' dinghy w/ Suzuki outboard
- Heavy duty stainless steel door
- Lounge to port w/ table
- Overhead lights & speakers

Engine Room

- Twin MTU 12V182 diesel engines
- Twin Onan generators
- Remote gauges
- Overhead lights
- Oil change system
- Water maker
- Fire suppression system
- Tool box
- Racor fuel filters
- Water pump
- Wesmar stabilizers
- Cablemaster
- Work bench

Electrical

- Twin Onan generators

- Charles battery chargers (3)
- Batteries
- Battery switches
- Electrical panel
- 12V/120V/240V system
- 100 amp service

Exclusions

Owner's personal belongings.

Disclaimer

The Company offers the details of this vessel or yacht in good faith but cannot guarantee or warrant the accuracy of this information nor warrant the condition of the vessel. A buyer should instruct his representatives, agents, or his surveyors, to investigate such details as the buyer desires validated. This vessel or yacht is offered subject to prior sale, price change, or withdrawal without notice.

PHOTOS



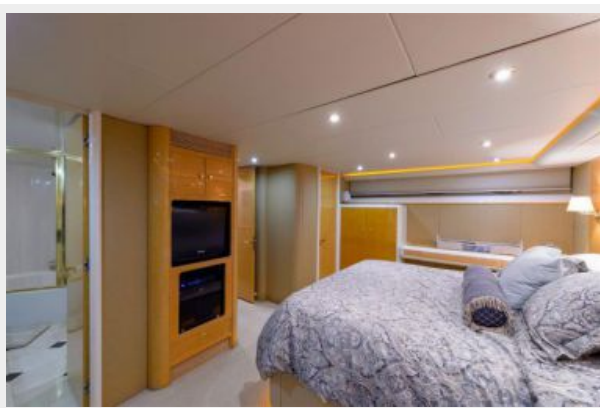


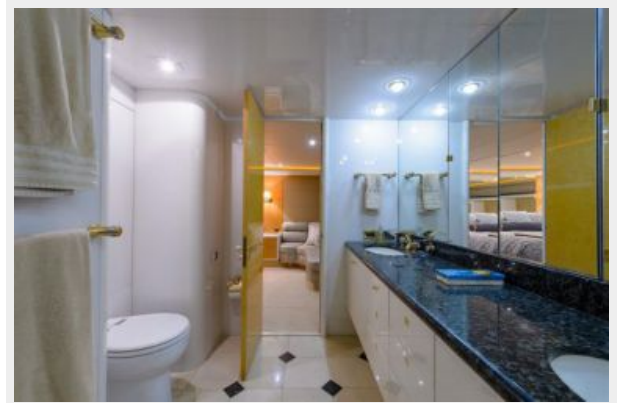
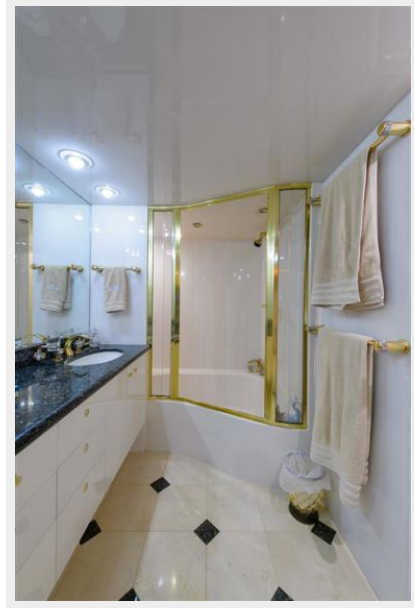








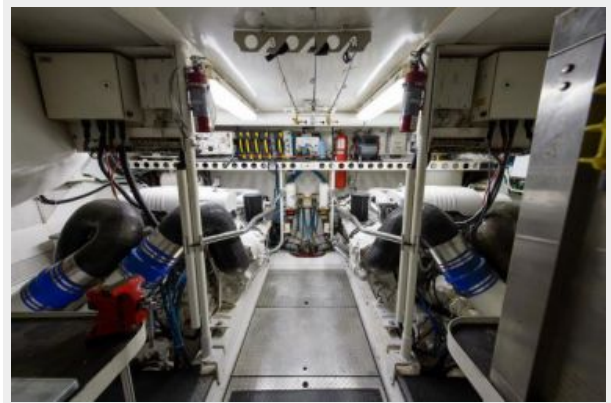
















CONTACTS

Andrey Shestakov, leading yacht broker of the sales department of Shestakov Yacht Sales Inc. Shestakov Yacht Sales Inc., the official representative of the Miami/Fort Lauderdale FL headquarters.

Contact details

Email: andrey@shestakovyachtsales.com

Web: shestakovyachtsales.com/en/

Telephones

USA: +1(954)274-4435

Office hours

Monday – Saturday: **9:00 - 21:00** EDT

Sunday: **closed**

Address



Harbour Towne Marina, 850 NE 3rd St,
STE 213, Dania, FL 33004