

## NO KID N — LAZZARA



**Судостроитель:** LAZZARA

**Год постройки:** 1999

**Модель:** Моторная яхта

**Цена:** **ЦЕНА ЯХТЫ ПО ЗАПРОСУ**

**Местонахождение:** United States

**Длина общая:** 76' 0" (23.16m)

**Ширина:** 19' 0" (5.79m)

**Макс. осадка:** 4' 6" (1.37m)

**Крейс. скорость:** 21 Kts. (24 MPH)

**Макс. скорость:** 24 Kts. (28 MPH)

Купить **No Kid N — LAZZARA** а также выбрать подходящую вам яхту из нашего каталога яхт вам поможет опытный яхтенный брокер Андрей Шестаков. На сегодняшний день компания **Shestakov Yacht Sales Inc.** имеет большое количество яхт в собственном списке продаж, а также тесно сотрудничает со всеми крупными яхтенными производителями по всему миру.

Для того чтобы купить яхту **No Kid N — LAZZARA** а также проконсультироваться по любому вопросу связанному с покупкой, продажей, чартером яхт позвоните по телефону **+7(918)465-66-44**.

# ОГЛАВЛЕНИЕ

---

ОГЛАВЛЕНИЕ	2
ХАРАКТЕРИСТИКИ	4
Обзор	4
Основная информация	4
Размеры	4
Скорость, вместимость и масса	4
Размещение	5
Корпус и палуба	5
Информация о двигателе	5
ПОДРОБНОЕ ОПИСАНИЕ	6
Recent Upgrades	6
Salon	6
Galley	7
Day Head	8
Lower Foyer	8
Master Stateroom	8
Master Head	8
Guest VIP, Port	9
Guest VIP Head, Port	9
Guest VIP, Starboard	9
Guest VIP Head, Starboard	10
Forward Lower Area	10
Captains Quarters	10
Captains Quarters Head	11
Guest Stateroom, Forward	11
Guest Stateroom Head, Forward	11
Aft Deck	11
Transom Area	12

---

Skybridge Electronics	12
Skybridge Area	12
Upper Aft Deck	13
Engine Room	13
Electrical	13
Исключения	14
Отказ от ответственности	14
ФОТОГРАФИИ	15
КОНТАКТЫ	29
Контактная информация	29
Телефоны	29
Время работы	29
Адрес	29

# ХАРАКТЕРИСТИКИ

## Обзор

### 1999 76' Lazzara Skylounge

The 76 Lazzara, "No Kid N", is a wide body skybridge Lazzara that has a lot of nice features starting with 5 staterooms and 6 heads, which includes the day head, large full body salon, spacious sky bridge, walk in engine room, dual davits on aft bridge and a teak aft deck!! Great for large families and even charter. This yacht recently moved to Baltimore for the summer, where the owners, both being licensed captains, will use her to cruise the Chesapeake. recently reduced and best 76 Lazzara on the market, it is ready for inspection. If you are in the market for a nice motor yacht, please make an appointment to see No Kid N this summer!

## Основная информация

**Тип судна:** Моторная яхта

**Подкатегория:** Моторная яхта

**Модельный год:** 1999

**Год постройки:** 1999

**Страна:** United States

**Открытая палуба мостика:** Да

## Размеры

**Длина общая:** 76' 0" (23.16m)

**Ширина:** 19' 0" (5.79m)

**Макс. осадка:** 4' 6" (1.37m)

## Скорость, вместимость и масса

**Крейс. скорость:** 21 Kts. (24 MPH)

**Макс. скорость:** 24 Kts. (28 MPH)

**Водоизмещение:** 89000 Pounds

**Вместимость воды:** 350 Gallons

**Вместимость сточного бака:** 150 Gallons **Объем топливного бака:** 1700 Gallons

## Размещение

---

**Всего кают:** 5

**Всего коек:** 7

**Спальные места:** 8

**Всего ком. состава:** 6

## Корпус и палуба

---

**Материал корпуса:** Fiberglass

## Информация о двигателе

---

**Двигатели:** 2

**Производитель:** MTU

**Модель:** 12V183TE

**Тип двигателя:** Inboard

**Тип топлива:** Diesel

---

# ПОДРОБНОЕ ОПИСАНИЕ

---

## Recent Upgrades

---

- New port generator 430 hrs
- New wesmar hydraulic oversized stabilizers
- Starboard gen 5800 hrs
- Both pod cylinders rebuilt
- AC pump replaced
- Water maker pump replaced
- All sump pumps replaced
- All 3 battery chargers replaced
- **1999 dingy new tubes/ new 60 hp motor 2015**
- Davit cables replaced
- Twin 7215 garmins
- 6 ft open array radar garmin
- Stainless marine exhaust replaced both motors
- 8 new AC units replaced
- Water heater
- Buck booster
- Spare 5 blade props
- 48 volt bow thruster upgrade
- 10 flat screen TVs
- All ceiling panels
- Sky lounge sofa
- Master room sofa
- Both washer/dryers replaced
- New non skid lower plat form
- KVH sat dish
- 6 toilets electric type

## Salon

---

- Carpet w/ runner
- Upgraded décor
- Birdseye maple accent throughout
- Designer coffee table
- U shaped sofa
- Upholstered valances
- Refrigerator
- Dinette w/ 6 chairs
- Stairs to master stateroom and both VIP's

- Blinds
- Overhead lighting
- Overhead speakers
- Entertainment center
- Samsung flat screen TV w/ SAT TV receiver box
- Heavy duty SS salon door
- Cabinet space for storage
- Large windows
- Electrical outlets
- Cruisair climate control
- Storage for stemware/flatware and dishware forward of dinette
- Birdseye Maple accent throughout

## Galley

---

- Popular Country Kitchen layout
- Laminate wood flooring
- Side doors
- Pantry
- Day head
- Dinette
- Molded steps to bridge
- Double stainless steel sinks w/ designer faucet
- KitchenAid upright refrigerator/freezer
- GE Profile microwave/convection over
- GE dishwasher
- Kenmore stove
- KitchenAid 4 burner cook top
- KitchenAid trash compactor
- Blinds
- Central vacuum
- Electrical outlets
- Garbage disposal
- Overhead storage
- Drawer space storage
- Storage under sink
- Forward window w/ screens
- Overhead lighting
- Bar stools at counter tops
- Toshiba TV in overhead swivel cabinet
- Electrical panel
- Steps down to forward foyer

---

## Day Head

---

- Pedestal sink
- Designer faucet
- Electric toilet- NEW
- Granite flooring
- Mirror
- Wallpaper
- Towel rack
- Exhaust fan

---

## Lower Foyer

---

- Carpeted steps down to foyer
- Bosch washer/dryer
- Large closet space
- Haier wine cooler
- Refrigerator
- Art display area
- Overhead lighting

---

## Master Stateroom

---

- Full beam master/amid ship
- King bed
- Bedding & pillows
- Carpet
- Mirrored headboard
- His/her drawer space
- Settee
- Nightstands
- Cruisair SMX II climate control
- Large walk in closet
- Panasonic flat screen TV w/ SAT receiver
- Stereo & entertainment center
- Overhead lighting
- Port holes w/ blinds
- Reading lights
- Birdseye Maple accent throughout

---

## Master Head

---



- Granite counter top
- Large tub/shower
- Extended vanity w/ his/her sinks & designer faucets
- Large mirror
- Electric toilet- NEW
- Exhaust fan
- Towel racks
- Tile floor
- Storage under sinks w/ drawer space
- Towel closet

---

## Guest VIP, Port

---

- Queen bed
- Bedding & pillows
- Hanging closet
- Drawer space under bed
- Carpet
- Port holes w/ blinds
- Overhead lights
- Reading lights
- Samsung 22" flat screen TV w/ SAT receiver
- Stereo w/ speakers
- Cruisair SMX II climate control
- Birdseye maple accent throughout
- En-suite head

---

## Guest VIP Head, Port

---

- Electric head- NEW
- Corian counter top w/ recessed sink
- Mirror
- Stall shower
- Tile floor
- Towel rack
- Towel closet
- Overhead lighting
- Exhaust fan

---

## Guest VIP, Starboard

---

- Queen bed
- Bedding & pillows
- Hanging closet
- Drawer space under bed
- Birdseye Maple accent throughout
- Samsung 22" flat screen TV w/ SAT receiver
- Port holes w/ blinds
- Cruisair SMX II climate control
- En-suite head

---

## **Guest VIP Head, Starboard**

---

- Electric head- NEW
- Corian counter top w/ recessed sink
- Mirror
- Stall shower
- Tile floor
- Towel rack
- Towel closets
- Overhead lighting
- Exhaust fan

---

## **Forward Lower Area**

---

- Carpet
- Bosch washer/dryer
- Captain's desk
- Closet space
- Courtesy lights
- Port holes w/ blinds

---

## **Captains Quarters**

---

- Twin bed
- Bedding & pillows
- Carpet
- Drawer storage
- Hanging locker
- Settee
- TV
- Visio 22" flat screen TV w/ SAT receiver

- Overhead lighting
- Overhead hatch

---

## Captains Quarters Head

---

- Electric head- NEW
- Corian counter top
- Designer faucet
- Stall shower
- Tile flooring
- Overhead lighting
- Towel racks
- Exhaust fan

---

## Guest Stateroom, Forward

---

- Upper/lower bunks
- Bedding & pillows
- Carpet
- Port holes w/ blinds
- Overhead lighting
- Drawer storage under bed
- Hanging locker
- Nightstand
- Samsung flat screen TV w/ SAT receiver
- En-suite head

---

## Guest Stateroom Head, Forward

---

- Electric head- NEW
- Corian counter top w/ recessed sink
- Designer faucet
- Exhaust fan
- Stall shower
- Tile flooring
- Towel racks

---

## Aft Deck

---

- Teak decks

- Uline refrigerator
- Raritan icemaker
- 42' flat screen TV
- Corian counter top
- Settee port and starboard
- Walk through to transom/engine room access
- Canvas covers for all seats
- Side doors P & S
- Overhead lights & speakers
- Camera
- Fold out table
- Ladder to bridge

---

## Transom Area

---

- Teak decks
- Access to engine room
- Pod garage doors for PWC/ storage
- Swim platform
- Aft railings

---

## Skybridge Electronics

---

- Garmin 7215 screens (2)
- Garmin radar
- Garmin Chart plotter
- Garmin GMI 10 (2)
- Simrad AI 50
- Northstar 6100i chartplotter
- ISIS system
- Furuno FCV 582 color sounder
- Simrad AP20 autopilot
- Icom VHF radios
- Shipmate speaker

---

## Skybridge Area

---

- Stidd helm chairs
- Upholstered L lounge
- Carpet & wood laminate flooring
- Electrical panel

- Coffee table
- Samsung 42" flat screen TV w/ SAT receiver
- SS heavy duty sliding door
- Horn
- Desk area w/ drawer space
- AC w/ vents
- Spotlight remotes
- Wesmar stabilizer controls
- Blinds
- Uline refrigerator

---

## Upper Aft Deck

---

- Twin davits
- SS rails
- Hatch to stairwell to lower aft deck
- Dinghy w/ cradle
- 14' dinghy w/ Suzuki outboard
- Heavy duty stainless steel door
- Lounge to port w/ table
- Overhead lights & speakers

---

## Engine Room

---

- Twin MTU 12V182 diesel engines
- Twin Onan generators
- Remote gauges
- Overhead lights
- Oil change system
- Water maker
- Fire suppression system
- Tool box
- Racor fuel filters
- Water pump
- Wesmar stabilizers
- Cablemaster
- Work bench

---

## Electrical

---

- Twin Onan generators

- Charles battery chargers (3)
- Batteries
- Battery switches
- Electrical panel
- 12V/120V/240V system
- 100 amp service

---

## Исключения

---

При продаже яхты исключаются личные вещи владельца.

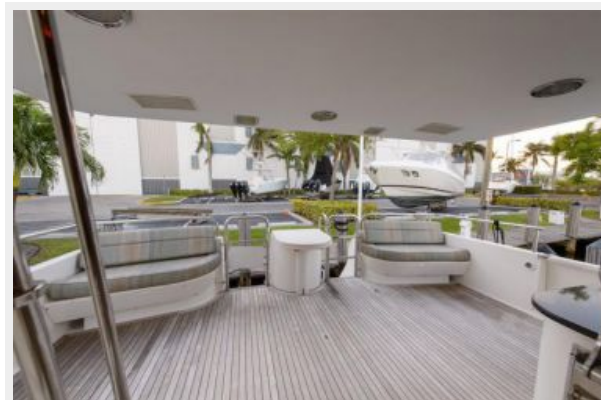
---

## Отказ от ответственности

---

Компания предоставляет описание судна или яхты добросовестно, но не может гарантировать точность этой информации, а также не ручается за техническое состояние. Покупатель должен проинструктировать своих агентов или оценщиков исследовать представленную информацию более подробно, по собственному желанию. Продажа судна или яхты, изменение цены или снятие с продажи будет происходить без предварительного уведомления.

# ФОТОГРАФИИ







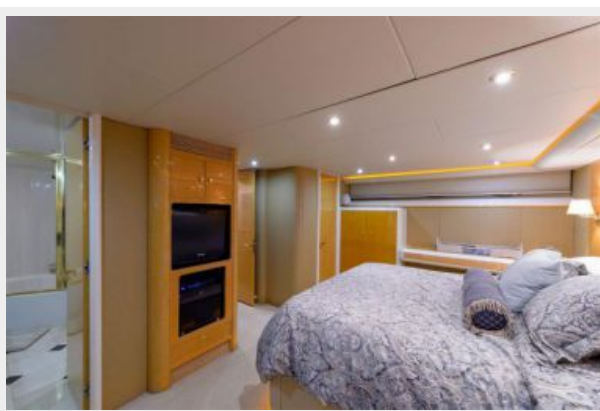


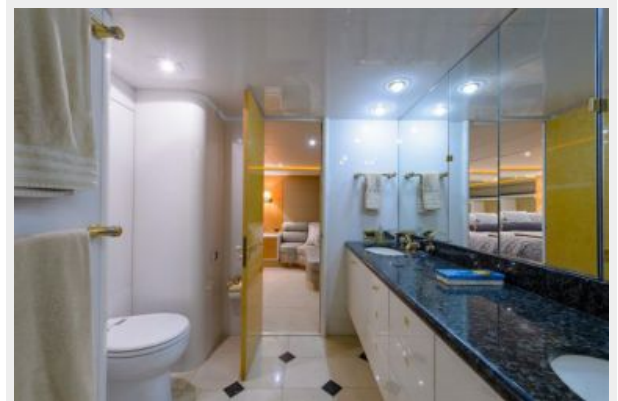
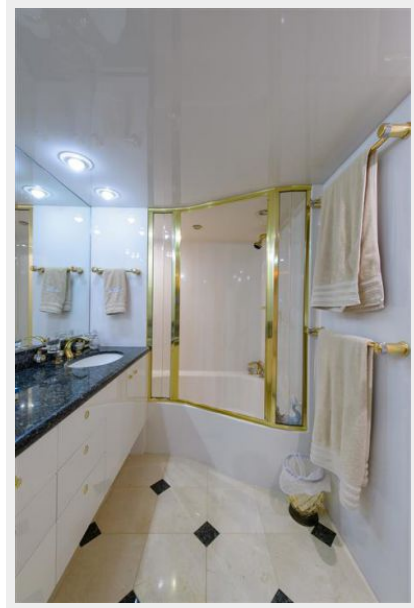












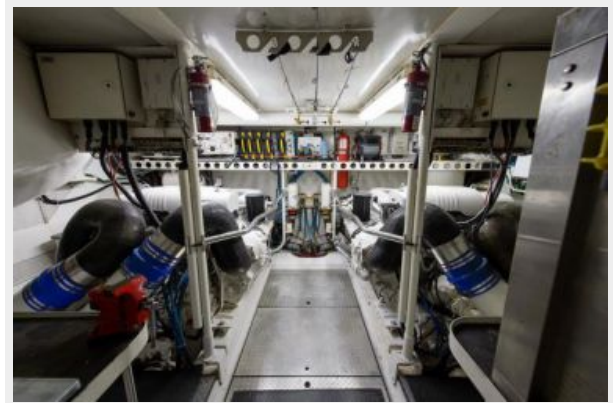


















# КОНТАКТЫ

---

Андрей Шестаков (Andrey Shestakov) – ведущий яхтенный брокер отдела продаж яхт и судов компании Shestakov Yacht Sales Inc. Официальный представитель Shestakov Yacht Sales Inc. для русскоговорящих клиентов в центральном офисе компании в Майами/Форт Лодердейл/Флорида/США.

## Контактная информация

---

Email: [andrey@shestakovyachtsales.com](mailto:andrey@shestakovyachtsales.com)

Web: [shestakovyachtsales.com](http://shestakovyachtsales.com)

## Телефоны

---

Краснодарский край: **+7(918)465-66-44**

США, Майами, Флорида: **+1(954)274-4435**

## Время работы

---

Понедельник – Суббота: **9:00 - 21:00**  
EDT

Воскресенье: **Закрито**

## Адрес

---



Harbour Towne Marina, 850 NE 3rd St,  
STE 213, Dania, FL 33004