

NEW 2017 PRESTIGE 680 FLYBRIDGE PR17 — PRESTIGE



Builder: PRESTIGE

Year Built: 2017

Model: Flybridge

Price: PRICE ON APPLICATION

Location: United States

LOA: 68' 0" (20.73m)

Beam: 17' 6" (5.33m)

Max Draft: 5' 2" (1.57m)

Cruise Speed: 25 Kts. (29 MPH)

Max Speed: 30 Kts. (35 MPH)

Our experienced yacht broker, Andrey Shestakov, will help you choose and buy a yacht that best suits your needs **NEW 2017 Prestige 680 Flybridge PR17WA-020 — PRESTIGE** from our catalogue. Presently, at Shestakov Yacht Sales Inc., we have a wide variety of yachts available on our sale's list. We also work in close contact with all the big yacht manufacturers from all over the world.

If you would like to buy a yacht **NEW 2017 Prestige 680 Flybridge PR17WA-020 — PRESTIGE** or would like help answering any questions concerning purchasing, selling or chartering a yacht, please call **+1(954)274-4435**

TABLE OF CONTENTS

TABLE OF CONTENTS	2
SPECIFICATIONS	6
Overview	6
Basic Information	6
Dimensions	6
Speed, Capacities and Weight	7
Accommodations	7
Hull and Deck Information	7
DETAILED INFORMATION	8
Overview	8
Standard Features	8
Factory Installed Options	9
Exclusions	10
Disclaimer	10
PHOTOS	11
680 Prestige FB 2017	11
680 Prestige FB 2017	11
680 Prestige FB 2017	11
680 Prestige FB 2017	11
680 Prestige FB 2017	11
680 Prestige FB 2017	11
680 Prestige FB 2017	12
680 Prestige FB 2017	12
680 Prestige FB 2017	12
680 Prestige FB 2017	12
680 Prestige FB 2017	13
680 Prestige FB 2017	13
680 Prestige FB 2017	13

680 Prestige FB 2017	13
680 Prestige FB 2017	14
680 Prestige FB 2017	14
680 Prestige FB 2017	14
680 Prestige FB 2017	14
680 Prestige FB 2017	15
680 Prestige FB 2017	15
680 Prestige FB 2017	15
680 Prestige FB 2017	15
680 Prestige FB 2017	16
680 Prestige FB 2017	16
680 Prestige FB 2017	16
680 Prestige FB 2017	16
680 Prestige FB 2017	17
680 Prestige FB 2017	17
680 Prestige FB 2017	17
680 Prestige FB 2017	17
680 Prestige FB 2017	18
680 Prestige FB 2017	18
680 Prestige FB 2017	18
680 Prestige FB 2017	18
680 Prestige FB 2017	19
680 Prestige FB 2017	19
680 Prestige FB 2017	19
680 Prestige FB 2017	19
680 Prestige FB 2017	19
680 Prestige FB 2017	19
680 Prestige FB 2017	20
680 Prestige FB 2017	20

680 Prestige FB 2017	20
680 Prestige FB 2017	20
680 Prestige FB 2017	20
680 Prestige FB 2017	20
680 Prestige FB 2017	21
680 Prestige FB 2017	21
680 Prestige FB 2017	21
680 Prestige FB 2017	21
680 Prestige FB 2017	22
680 Prestige FB 2017	22
680 Prestige FB 2017	22
680 Prestige FB 2017	22
680 Prestige FB 2017	23
680 Prestige FB 2017	23
680 Prestige FB 2017	23
680 Prestige FB 2017	23
680 Prestige FB 2017	23
680 Prestige FB 2017	23
680 Prestige FB 2017	24
680 Prestige FB 2017	24
680 Prestige FB 2017	24
680 Prestige FB 2017	24
680 Prestige FB 2017	24
680 Prestige FB 2017	24
680 Prestige FB 2017	24
680 Prestige FB 2017	25
680 Prestige FB 2017	25
680 Prestige FB 2017	25
680 Prestige FB 2017	25
CONTACTS	26

Contact details	26
Telephones	26
Office hours	26
Address	26

SPECIFICATIONS

Overview

Dealer Demo is Factory Show Priced and

Includes ALL Manufacturer Incentive

Price is for Ft. Lauderdale Boat Show

This 680 flybridge features an interior design synonymous with light, space, ease of movement and privacy. With bold, timeless lines and high-quality materials, fit and finish, the PRESTIGE 680 offers the same technical attributes found throughout the line, while also benefiting from the latest innovations. Specifically designed to be equipped with an IPS 1200 engine, the PRESTIGE 680 offers enjoyable, comfortable cruising.

Basic Information

Category: Flybridge

Sub Category: Motor Yacht

Model Year: 2017

Year Built: 2017

Country: United States

Fly Bridge: Yes

Cockpit: Yes

Dimensions

LOA: 68' 0" (20.73m)

Beam: 17' 6" (5.33m)

Max Draft: 5' 2" (1.57m)

MFG Length: 70' 4" (21.44m)

Speed, Capacities and Weight

Cruise Speed: 25 Kts. (29 MPH)

Cruise Speed Range: 303

Max Speed: 30 Kts. (35 MPH)

Displacement: 65698 Pounds

Gross Tonnage: 32849 Pounds

Water Capacity: 243 Gallons

Holding Tank: 79 Gallons

Fuel Capacity: 911 Gallons

Accommodations

Total Cabins: 4

Hull and Deck Information

Hull Material: Fiberglass

DETAILED INFORMATION

Overview

Dealer Demo is Factory Show Priced and

Includes ALL Manufacturer Incentive

Price is for Ft. Lauderdale Boat Show

This 680 flybridge features an interior design synonymous with light, space, ease of movement and privacy. With bold, timeless lines and high-quality materials, fit and finish, the PRESTIGE 680 offers the same technical attributes found throughout the line, while also benefiting from the latest innovations. Specifically designed to be equipped with an IPS 1200 engine, the PRESTIGE 680 offers enjoyable, comfortable cruising.

Standard Features

- Wenge Interior
- Bow Thruster Electric
- Searchlight
- Engine Oil Change System
- Engine Driven Emergency Bilge Pump
- Automatic Fire Fighting System
- Concealed Gangway
- Teak Floor on CP, Sideways, Floor of Bathing Platform
- Teak Tables (2: 1 for Fly Bridge + 1 for Aft Cockpit)
- External Cushions 1st & 2nd décor
- Aft Access to Engines Room/Crew Quarters
- Dockside Water
- Barbecue on Fly Bridge
- Fridge on Flybridge
- Refrigerator with Freezer (220 Liters)
- Portholes Mosquito Nets
- Saloon/Owners Cabin Carpet Floor
- Owners Cabin Carpet Floor
- Radar High Definition (Radome Only)
- Saloon Roman Blinds
- Towel Sets for Bathrooms
- Seats for Dining Area (x6)
- LED Light System
- Black & Grey Water Tanks w/Diverter for Sea Discharge
- Radio CD Player on Flybridge (Remote Control & Speakers Aft CP)

- Antifouling Bottom Paint

Factory Installed Options

- Electronics Package Raymarine
- (3 Glassbridge GS165 Displays at main helmstation
- plus 2 GS165 displays at fly station + HD digital radar,
- plus AIS650 plus VHF 260 plus P70LS Autopilot displays
- plus CP370 sonar module)
- Leather Devon Nubuck in Salon
- 220V Shore Power w/Automatic Retractable Reel
- Second mooring Windless (on Starboard)
- Mooring Kit
- Anchoring Kit - Stainless Steel Anchor
- Stainless Steel Bow Protector
- Aft Closing Sunbrella Taupe
- Flying Bridge Hard Top
- Set of Protection Covers for Flybridge
- Hydraulic Bathing Platform
- Crew Cabin Wenge
- Gyroscopic Stabilizer Seakeeper NG9
- Blue Underwater Lights on Transom (5-Units)
- Wine Cellar Wenge 110V
- Icemaker on Deck 110V 60Hz
- Ice Maker Flybridge
- Washing Machine Combo 110V
- Dishwasher (9-Dishes) 230V-60Hz
- Vacuum System (3-Units)
- Air Conditioning for Skipper Cabin
- Tropical Chilled-Water Air Conditioning 105000 BTU
- Crew Cabin
- 3-Dining Room Chairs in Leather Beige
- Electrical Deluxe Folding Table in Dining Room
- Vogue 39 Carpet in Wheelhouse and Cabins
- Extra Joystick IPS in Cockpit
- Dual Switchable Fuel Filter + Alarm
- Automatic Trim Tabs Interceptor
- Electric Oil Drain Pump for Volvo Engines
- Speakers Bose Cockpit & Flying Bridge
- Home Theater Bose 525 + DVD/Blueray in Saloon
- Reverse Cam & Monitoring Cam Engine Room Ray
- Electric Hi-Low System for Saloon Curtains
- Whitened Oak Hardwood Floors Entrance & Saloon

- Sliding Chocks for Rib Tender (Removable)
- Folding Saloon Table, Wenge
- Décor Kit
- Electrical Inflator for Dinghy
- Windows External Curtains in Sunworker Bronze
- Home Cinema Bose C130 Fwd Cabin
- Satellite Receiver Prefit
- Porthole Mosquito Screens
- Master State Sofa to match Salon Sofa Material

Exclusions

Owner's personal belongings.

Disclaimer

The Company offers the details of this vessel or yacht in good faith but cannot guarantee or warrant the accuracy of this information nor warrant the condition of the vessel. A buyer should instruct his representatives, agents, or his surveyors, to investigate such details as the buyer desires validated. This vessel or yacht is offered subject to prior sale, price change, or withdrawal without notice.

PHOTOS

680 Prestige FB 2017



680 Prestige FB 2017



680 Prestige FB 2017



680 Prestige FB 2017



680 Prestige FB 2017



680 Prestige FB 2017



680 Prestige FB 2017



680 Prestige FB 2017



680 Prestige FB 2017

680 Prestige FB 2017



680 Prestige FB 2017



680 Prestige FB 2017



680 Prestige FB 2017



680 Prestige FB 2017



680 Prestige FB 2017



680 Prestige FB 2017



680 Prestige FB 2017

680 Prestige FB 2017



680 Prestige FB 2017



680 Prestige FB 2017



680 Prestige FB 2017



680 Prestige FB 2017



680 Prestige FB 2017



680 Prestige FB 2017



680 Prestige FB 2017



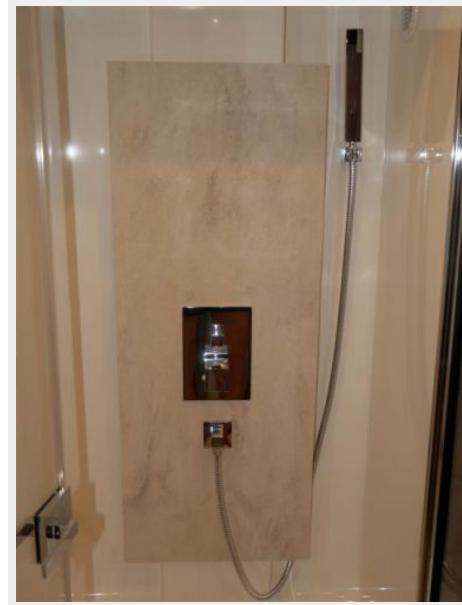
680 Prestige FB 2017



680 Prestige FB 2017



680 Prestige FB 2017

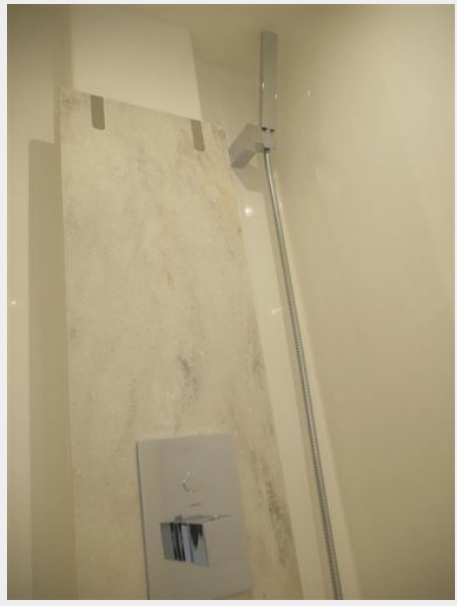


680 Prestige FB 2017

680 Prestige FB 2017



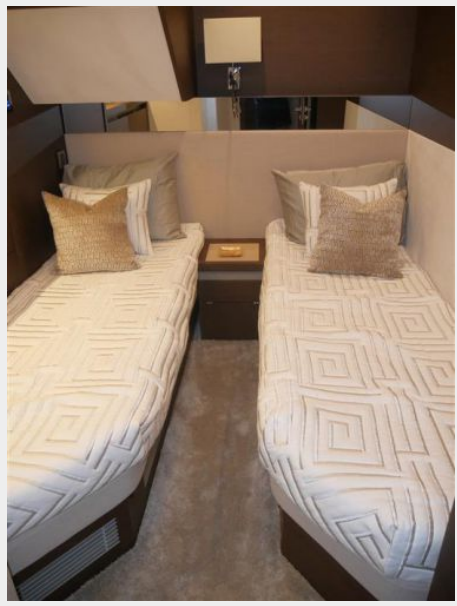
680 Prestige FB 2017



680 Prestige FB 2017



680 Prestige FB 2017



680 Prestige FB 2017



680 Prestige FB 2017



680 Prestige FB 2017



680 Prestige FB 2017



680 Prestige FB 2017



680 Prestige FB 2017



680 Prestige FB 2017



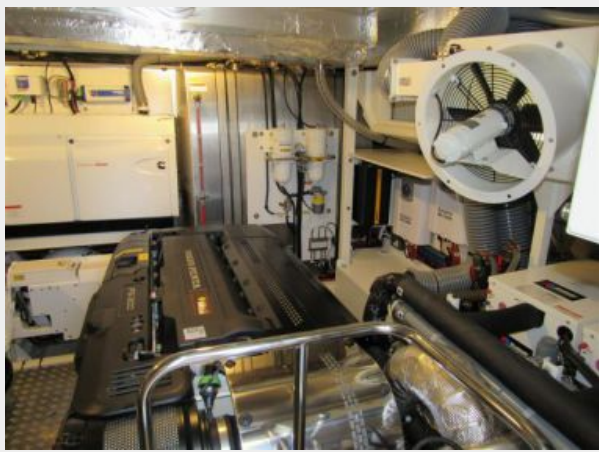
680 Prestige FB 2017



680 Prestige FB 2017



680 Prestige FB 2017



680 Prestige FB 2017



680 Prestige FB 2017



680 Prestige FB 2017



680 Prestige FB 2017



680 Prestige FB 2017



680 Prestige FB 2017



680 Prestige FB 2017



680 Prestige FB 2017



680 Prestige FB 2017



680 Prestige FB 2017



680 Prestige FB 2017



680 Prestige FB 2017



680 Prestige FB 2017



680 Prestige FB 2017



680 Prestige FB 2017



680 Prestige FB 2017



680 Prestige FB 2017



680 Prestige FB 2017



680 Prestige FB 2017



680 Prestige FB 2017



680 Prestige FB 2017



680 Prestige FB 2017



680 Prestige FB 2017



680 Prestige FB 2017



680 Prestige FB 2017



680 Prestige FB 2017



680 Prestige FB 2017



CONTACTS

Andrey Shestakov, leading yacht broker of the sales department of Shestakov Yacht Sales Inc. Shestakov Yacht Sales Inc., the official representative of the Miami/Fort Lauderdale FL headquarters.

Contact details

Email: andrey@shestakovyachtsales.com

Web: shestakovyachtsales.com/en/

Telephones

USA: +1(954)274-4435

Office hours

Monday – Saturday: **9:00 - 21:00** EDT

Sunday: **closed**

Address



Harbour Towne Marina, 850 NE 3rd St,
STE 213, Dania, FL 33004