

CHASIN TAILS — OCEAN YACHTS



Судостроитель: [Ocean Yachts](#)

Год постройки: 1994

Модель: Катер для спортивной рыбалки

Цена: ЦЕНА ЯХТЫ ПО ЗАПРОСУ

Местонахождение: United States

Длина общая: 53' 0" (16.15m)

Ширина: 16' 4" (4.98m)

Мин. осадка: 4' 4" (1.32m)

Макс. осадка: 4' 4" (1.32m)

Купить **CHASIN TAILS** — [Ocean Yachts](#) а также выбрать подходящую вам яхту из нашего каталога яхт вам поможет опытный яхтенный брокер Андрей Шестаков. На сегодняшний день компания **Shestakov Yacht Sales Inc.** имеет большое количество яхт в собственном списке продаж, а также тесно сотрудничает со всеми крупными яхтенными производителями по всему миру.

Для того чтобы купить яхту **CHASIN TAILS** — [Ocean Yachts](#) а также проконсультироваться по любому вопросу связанному с покупкой, продажей, чартером яхт позвоните по телефону **+7(918)465-66-44**.

ОГЛАВЛЕНИЕ

| | |
|-------------------------------|----|
| ОГЛАВЛЕНИЕ | 2 |
| ХАРАКТЕРИСТИКИ | 3 |
| Обзор | 3 |
| Основная информация | 3 |
| Размеры | 3 |
| Скорость, вместимость и масса | 3 |
| Размещение | 4 |
| Корпус и палуба | 4 |
| Информация о двигателе | 4 |
| ПОДРОБНОЕ ОПИСАНИЕ | 5 |
| Accommodations | 5 |
| Salon | 5 |
| Galley | 5 |
| Electronics | 5 |
| Bridge | 6 |
| Deck/Fishing | 6 |
| Engine Room | 7 |
| Исключения | 8 |
| Отказ от ответственности | 8 |
| ФОТОГРАФИИ | 9 |
| КОНТАКТЫ | 19 |
| Контактная информация | 19 |
| Телефоны | 19 |
| Время работы | 19 |
| Адрес | 19 |

ХАРАКТЕРИСТИКИ

Обзор

Chasin Tails is a very nice example of Ocean Yachts popular 53 SS, and probably Oceans best riding hull. She has the preferred Master forward - 3 stateroom layout, and has had constant electronics updates. Powered with the optional 820 HP MAN's gives her a respectful 27-29 cruise at 1950 burning under 60 gph. She has been owned by the same family since 1997 and is ready for her next owner. Come see her conveniently located in Ocean City, MD

Основная информация

Тип судна: Катер для спортивной рыбалки

Подкатегория: Convertible

Модельный год: 1994

Год постройки: 1994

Страна: United States

Номер регистрации в береговой охране: 1023937

Верх: Hardtop

Открытая палуба мостика: Да

Кубрик: Да

Размеры

Длина общая: 53' 0" (16.15m)

Ширина: 16' 4" (4.98m)

Мин. осадка: 4' 4" (1.32m)

Макс. осадка: 4' 4" (1.32m)

Скорость, вместимость и масса

Водоизмещение: 52000 Pounds

Вместимость воды: 200 Gallons

Вместимость сточного бака: 50 Gallons

Объем топливного бака: 860 Gallons

Размещение

Всего кают: 3

Всего ком. состава: 2

Корпус и палуба

Материал корпуса: Fiberglass

Материал палубы: Fiberglass

Комплектация корпуса: Modified V-Hull

Цвет корпуса: White

Отделка корпуса: Plastic

Информация о двигателе

Двигатели: 2

Производитель: MAN

Модель: D2840LE401

Тип двигателя: Inboard

Тип топлива: Diesel

ПОДРОБНОЕ ОПИСАНИЕ

Accommodations

This 53 has the VIP layout with the large Master stateroom forward. Head with full vanity and medicine cabinets, huge stand up shower, fan and electric head. Large hatch provides ample ventilation. There is also an anchor storage hatch in the shower. Moving aft to the Master, the queen berth is centerline offset to port. Full halogen lights throughout the stateroom. There are three cedar lined hanging closets with plenty of storage space. There are four drawers on either side of the berth as well. Other amenities include digital controlled A/C and heater controls as well as separate stereo system for master. Aft of the master to starboard is the guest head. With a Galley Maid electric head and stand up shower as well as a Corian basin with Moen faucets, this head is well laid out and very comfortable. A large hatch provides adequate ventilation and natural lighting. Aft of the guest head is the washer/dryer closet with Kenmore appliances. Down the companionway from the salon to port you find the guest master stateroom. A double berth with four drawers beneath and full carpeting, this suite has many amenities. Cedar lined hanging closet as well as cabinets to port above the berth provide ample storage space. A night stand to starboard of the berth allow space for personal items. Full halogen lighting throughout the suite. The third guest stateroom is to starboard and has two single over under berths. There is a cedar lined hanging closet as well as four drawers for storage. Halogen lighting and directional reading lights compliment the suite.

Salon

Dinette has L-shaped settee to starboard and a table. Sony entertainment center is comprised of 27" LED TV, and Surround Sound Receiver as well as DVD/CD. Table and L-shaped sofa to port provides ample space for relaxing and entertaining. The sofa has Rod and tackle storage underneath. Twin barrel chairs also compliment the salon. There is a full wet bar with automatic beverage dispenser and U-Line ice maker (NEW 2014).

Galley

Galley is to port with Corian counter tops. There are two low profile Sub Zero refrigerators one with a freezer box. A 4 burner Kitchen Aid cook top well as a Kenmore dishwasher, and a Broan trash compactor (NEW 2015) to compliment the galley. Moen faucet, ISE hot water and integrated soap dispenser outfit the sink. Sharp Carousel Microwave convection oven is recessed and hidden by a sliding cabinet. There are two other sliding cabinets as well as four cabinets with doors above the counter. Below the counters there are three cabinets and three pull out drawers for storage

Electronics

- NEW 2013 Simrad NSS 12 MFD GPS/Chart Plotter
- NEW 2013 Simrad 6KW Radar with 4' open array
- NEW 2017 Simrad Bottom machine with Chirp
- NEW 2017 Sirius XM satellite weather
- NEW 2005 Furuno FCV1100 Bottom machine 50khz & 200khz ducers
- Robertson Auto pilot
- Northstar 952
- Northstar 951
- NEW 2010 2 VHF
- NEW 2015 1 VHF repeater in cockpit
- NEW 2010 4 Shakespeare antennas
- SEA single side-band
- KVH satellite telephone
- Alpine stereo
- NEW 2015 Fusion AMP
- NEW 2015 4 Fusion speakers and 1 10" subwoofer

Bridge

- 1 Stidd helm chair (NEW cushions 2015)
- 1 Murry Bros companion chair (New cushions 2015)
- EZ2CY 3 sided enclosure (Front 3 panels NEW 2015)
- Aft winter enclosure
- Hynautics Steering
- Glendenning single lever electronic control (NEW 2010)
- Tons of storage under seating
- Bridge trash can
- 12v outlets
- 110v outlets
- Offshore PFDs
- NO BRIDGE CUSHIONS

Deck/Fishing

The 118 square foot cockpit provides a large stable platform for fishing or cruising. Engine room access is to port of the salon door.

- Murry Bros tournament Fighting chair with rocket
- Rupp tripple spreader outriggers
- Rupp center rigger
- Two 150 watt Underwater lights
- Rod holders on bridge hand rail

- Halogen spreader lights
- Cockpit freezer
- Bait station and sink
- Fresh and salt water washdown systems
- Cockpit combing pads (NEW 2015)
- Teak cockpit covering boards
- 4 Rod holders
- 2 Clearing rod holders in wings
- Storage compartments under gunnells
- 4 led cockpit courtesy lights
- 2 waterproof speakers
- Transom door and gate
- 4 tackle drawers
- Huge insulated Macerated Fish Box
- Large in deck livewell
- Starboard box next to salon door has remote VHF, temp gauge, and Fire Boy manual pull
- 50 AMP outlet
- 50' 50 AMP power cord
- 50' CATV cable
- Electric windless
- Anchor and rope
- Lines and fenders

Engine Room

- Twin 820 MAN mains
- 12.5 Onan Genset
- NEW 2017 Salon AC unit and circulation pump
- STRM AC (NEW compressor 2012)
- Oil exchange pump
- Racor fuel filters
- NEW 2015 12v lighting
- On board battery charger
- New 2016 Starter and house batteries
- Cockpit freezer compressor
- Two engine room blowers
- NEW 2016 Fresh water pump and expansion tank
- NEW 2016 2 Galley Maid head pumps
- Fresh water hose bib

Engines Total Power: 1640 HP Engine 1: Engine Brand: MAN Year Built: 1994 Engine Model: D2840LE401 Engine Type: Inboard Engine/Fuel Type: Diesel Location: Starboard Engine Hours: 3116 Drive Type: Direct Drive Engine Power: 820 HP Engine 2: Engine Brand: MAN Year

Built: 1994 Engine Model: D2840LE401 Engine Type: Inboard Engine/Fuel Type: Diesel
Location: Port Engine Hours: 2170 Drive Type: Direct Drive Engine Power: 820 HP Cruising
Speed: 28 knots @ 1950 RPM Maximum Speed: 34 knots **Tanks** Fresh Water Tanks: 1 Plastic
(200 Gallons) Fuel Tanks: 4 Aluminum (860 Gallons) Holding Tanks: 1 Plastic (50 Gallons)

Исключения

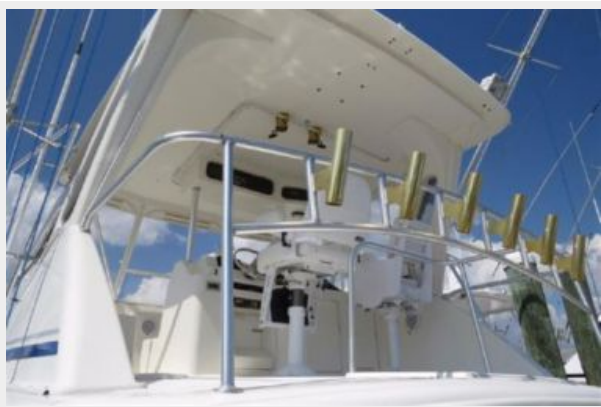
При продаже яхты исключаются личные вещи владельца.

Отказ от ответственности

Компания предоставляет описание судна или яхты добросовестно, но не может гарантировать точность этой информации, а также не ручается за техническое состояние. Покупатель должен проинструктировать своих агентов или оценщиков исследовать представленную информацию более подробно, по собственному желанию. Продажа судна или яхты, изменение цены или снятие с продажи будет происходить без предварительного уведомления.

ФОТОГРАФИИ



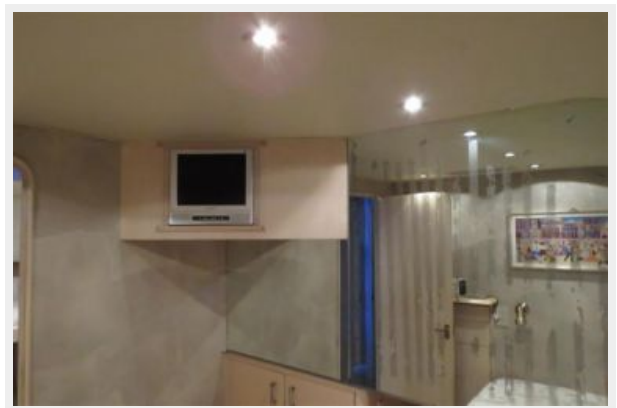






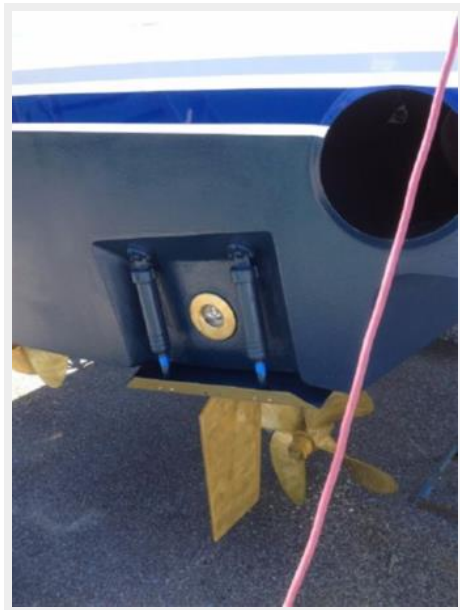
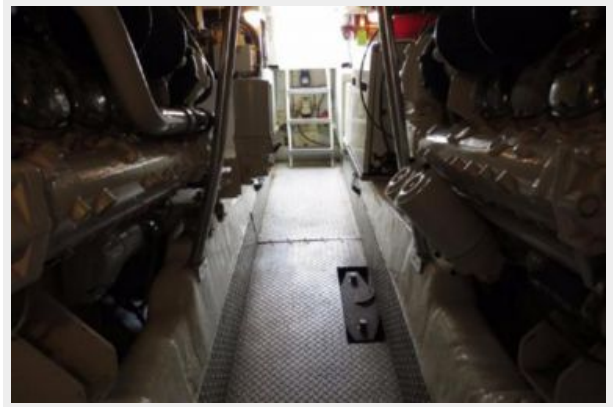












КОНТАКТЫ

Андрей Шестаков (Andrey Shestakov) – ведущий яхтенный брокер отдела продаж яхт и судов компании Shestakov Yacht Sales Inc. Официальный представитель Shestakov Yacht Sales Inc. для русскоговорящих клиентов в центральном офисе компании в Майами/Форт Лодердейл/Флорида/США.

Контактная информация

Email: andrey@shestakovyachtsales.com

Web: shestakovyachtsales.com

Телефоны

Краснодарский край: **+7(918)465-66-44**

США, Майами, Флорида: **+1(954)274-4435**

Время работы

Понедельник – Суббота: **9:00 - 21:00**
EDT

Воскресенье: **Закрито**

Адрес



Harbour Towne Marina, 850 NE 3rd St,
STE 213, Dania, FL 33004