

NIRVANA — HORIZON



Builder: HORIZON

Year Built: 2000

Model: Motor Yacht

Price: PRICE ON APPLICATION

Location: United States

LOA: 109' 10" (33.48m)

Beam: 23' 3" (7.09m)

Max Draft: 7' 0" (2.13m)

Cruise Speed: 12 Kts. (14 MPH)

Max Speed: 17 Kts. (20 MPH)

Our experienced yacht broker, Andrey Shestakov, will help you choose and buy a yacht that best suits your needs **NIRVANA — HORIZON** from our catalogue. Presently, at Shestakov Yacht Sales Inc., we have a wide variety of yachts available on our sale's list. We also work in close contact with all the big yacht manufacturers from all over the world.

If you would like to buy a yacht **NIRVANA — HORIZON** or would like help answering any questions concerning purchasing, selling or chartering a yacht, please call **+1(954)274-4435**

TABLE OF CONTENTS

TABLE OF CONTENTS	2
SPECIFICATIONS	5
Overview	5
Basic Information	6
Dimensions	6
Speed, Capacities and Weight	6
Accommodations	6
Hull and Deck Information	6
Engine Information	7
DETAILED INFORMATION	8
Overview	8
Walkthrough	8
Main Salon	9
Galley	9
Master Stateroom	9
Master Head	9
Guest Staterooms	9
Guest Head	10
Flybridge and Pilothouse	10
Deck and Hull	10
Deck Hardware	10
Aft Deck	11
Main Machinery	11
Steering System	11
Engine Room and Equipment	11
Electrical Systems	11
Navigation and Communication	12
Plumbing	12

Crew Cabin	12
Exclusions	12
Disclaimer	12
PHOTOS	13
Profile	13
Aft Deck	13
Aft Deck	13
Aft Deck Dining	13
Main Salon	13
Main Salon	13
Main Salon Looking Aft	14
Dining	14
Pilothouse	14
Helm	14
Pilothouse	14
Master Stateroom	14
Master Stateroom	14
Master Bath	14
Sauna	15
VIP Stateroom	15
Guest Bath	15
Twin Stateroom 1	15
Stairs to Upper Deck	15
Lower Foyer	15
Flybridge	16
Sundeck	16
Flybridge	16
Flybridge Seating	16
Flybridge	16

Flybridge Jacuzzi	16
Jacuzzi	16
Side Deck	16
Stern / Toys	17
Aerial Overview	17
Bow	17
Stern	17
Aerial Port Profile	17
Aerial Starboard Profile	17
IMG_3330	18
Starboard Profile	18
IMG_3331	18
IMG_3334	18
IMG_3338	19
IMG_3340	19
CONTACTS	20
Contact details	20
Telephones	20
Office hours	20
Address	20

SPECIFICATIONS

Overview

To schedule a private FaceTime or video tour, contact me and make arrangements.

"NIRVANA" is a must-see for anyone shopping in this size & price range that wants a DEAL. Her sellers are highly motivated and ready to strike a deal with the first serious and reasonable buyer.

"NIRVANA's" interior décor has a light high gloss wood finish with teak floors nicely joining the interior & exterior deck spaces and giving her layout a nice flow as you transition from outside in. The soft furnishings are a combination of white & gray fabrics and she saw a refit to her decor in 2015

Notable Features and Upgrades:

- New Garmin electronics package complete with open array radar
- Fold down Beach Club complete with teak beach
- Huge on-deck master cabin located forward on the main deck
- Outdoor day head on aft deck
- Possibly the most exterior space in her class
- Massive master head complete with private sauna.
- Expansive upper sundeck with alfresco dining and free standing furniture.
- Jacuzzi.
- Enormous tender garage capable of housing multiple toys including tender, jet skis.
- 5,000 gallons fuel tank capacity
- Range in excess of 2,000 nautical miles when cruising at her economical speeds
- Capable of reaching 20 knots at top speed.
- (4) Stateroom (5) head layout plus crew
- Rebuilt Detroit Diesel DDEC 24V-71TA 1800 HP diesel engines with under 350 Hrs SMOH
- Helicopter capable upper aft-deck

Basic Information

Category: Motor Yacht

Sub Category: Semi-Displacement

Model Year: 2000

Year Built: 2000

Refit Year: 2017

Refit Type: Full Interior Decor Refit

Country: United States

Vessel Top: Hardtop

Fly Bridge: Yes

Dimensions

LOA: 109' 10" (33.48m)

Beam: 23' 3" (7.09m)

Max Draft: 7' 0" (2.13m)

Speed, Capacities and Weight

Cruise Speed: 12 Kts. (14 MPH)

Max Speed: 17 Kts. (20 MPH)

Displacement: 250000 Pounds

Water Capacity: 1000 Gallons

Fuel Capacity: 5000 Gallons

Accommodations

Total Cabins: 4

Sleeps: 8

Total Heads: 5

Captain Cabin: True

Crew Cabin: 2

Crew Heads: 1

Hull and Deck Information

Hull Material: Fiberglass

Engine Information

Engines: 2

Manufacturer: Detroit Diesel

Model: 24V 71TA

Engine Type: Inboard

Fuel Type: Diesel

DETAILED INFORMATION

Overview

NIRVANA is brand new to the market having just completed a multimillion-dollar refit including a completely new interior décor & full service of all major machinery, new exterior marble counters & exterior cushions. The end result is a stunning yacht that would be an excellent charter vessel or perfect for private use. NIRVANA's interior décor has a light high gloss wood finish with brand new teak floors which help join the interior & exterior deck spaces making them flow together as one. The soft furnishings are a combination of white & gray fabrics. Key amenities are a dual level master cabin located forward on the main deck that is complete with a private sauna. The expansive upper sundeck has alfresco dining and centerline Jacuzzi surrounded by lounge areas and full wet bar. The tender garage houses multiple toys including tender, jet ski, and enough paddle boards & water sports toys for every guest onboard. Carrying 5,000 gallons NIRVANA has a range over 2,000 nautical miles when cruising at her economical speeds, yet still has the ability to reach 20 knots. NIRVANA is a must-see for anyone shopping in this size & price range.

Walkthrough

Starting on the aft deck, NIRVANA has formal dining for up to 10 guests at a gorgeous fixed white marble dining table. There is also bench seating and access to both the swim platform, upper sundeck and walkways on both the port & starboard sides that lead to the bow area. Continuing to the interior, you enter the main salon through floor to ceiling glass sliding doors that can be opened to combine both the interior and exterior spaces. Teak floors continue through the main salon & dining areas. There is a large U-shaped custom settee to port and 2 custom leather chairs opposite to starboard. Forward of the lounge area is a flat screened TV that separates the salon from the formal dining area that seats up to 10. The companionway to starboard continues to the galley kitchen to port with private access to the crew quarters. All the way forward on the main deck is the massive master cabin ensuite complete with a sauna that can see up to 6 people. This is probably the largest master cabin I have ever seen on a yacht this size. Down below you have 4 guest cabins all with private ensuite baths that sleep 8 additional guests. Walking up to the wheelhouse the captain has great visibility & guests have a nice sitting area that doubles as the captain's office. The full beam sundeck has multiple sitting & lounge areas, centerline Jacuzzi that can fit up to 8 people, full-service bar and a unique feature which is an upper crow's nest area complete with second helm station. New exterior cushions & white marble countertops finish off the deck spaces in style. The bow has a full walk around access to both port & starboard with teak decks, ground tackle and massive sunpads great for relaxing when underway or at anchor. The full beam transom door folds open to create a beach club atmosphere where you have easy access to the water which makes enjoying the jet ski, paddle boards, and tender even more convenient. When walking through NIRVANA it is easy to see where the owner spent time & money to assure no detail was overlooked. The refit which took

close to one-year leaves NIRVANA shining bright and feeling like a new yacht.

Main Salon

Spacious design Wooden lacquered ceilings in slate grey All LED lighting overhead Large sectional sofa Ash wood and white marble accented cabinetry 70" LED LG flat screen Real teak flooring Surround sound system built into headliner Glass top coffee table Designer throw rug (2) Euro-style lounge chairs to starboard TV and telephone sockets TV cabinet Tinted glass for window and aft deck entrance One dining table for 8 - 10 persons Designer sliced mahogany style table Air-conditioned interior (chilled water system)

Galley

Walls, furniture in wood or lacquer finish Standard vinyl ceiling Double stainless-steel sinks Sockets AC 110V/220V Teak and holly floor, or plywood base with carpet Ceiling lighting Marble or artificial marble countertop Galley equipment including dishwasher, galley exhaust, stove w/cooktop, household 26 cuft refrigerator, trash compactor Air-conditioned interior (chilled water system)

Master Stateroom

Located on deck affording panoramic views Ceiling in lacquered finish Recessed type ceiling with LED lighting around Walls and furniture in chosen ash grey wood King-size centerline bed with "Yachtiflex" ventilation system Two reading lamps LG 42" LED TV Wardrobe with light, drawers for storage Premium carpeting with teak accents Air-conditioned interior (chilled water system)

Master Head

Walls and ceiling finished with hi-gloss paint Bidet and Sealand vacuum toilet Stone floorings Sauna A built-in wash bowl with marble top Bathroom accessories Jacuzzi bathtub Bathroom accessories Medicine cabinet Shower and faucets Lighting above mirror Porthole with curtain Overhead LED lighting

Guest Staterooms

Ceiling in Alcantara Two separated beds with "Yachtiflex" ventilation system One big mirror Wall lamp Overhead LED lighting Portholes Overhead LED lighting 24/220V sockets Air-conditioned interior (chilled water system) Wardrobe with light Sound system with two speakers in each

cabin Ceiling lighting Premium carpeting

Guest Head

Walls and ceiling finished with hi-gloss paint Shower and faucets Bathroom accessories Sealand vacuum toilet One built-in wash bowl with marble top One big mirror Bathroom accessories Lighting above mirror

Flybridge and Pilothouse

Dashboard with all instruments for main engines control Engines control with throttle and reversing levers Venturi with tinted Lexan panel around Wet bar with refrigerator and ice maker U-shape Fly Bridge vinyl settee with storage compartment under Pilot seat (adjustable) Sunbathe cushion Stainless steel handrails Cover for Fly Bridge console Nonskid deck New custom cushions (3) Marble tables with stainless steel pedestals Wet bar with ice maker and refrigerator Flagpole Custom layout to suit personal requirements BBQ unit & cooktop Jacuzzi bath on FIB for 4 - 6 persons

Deck and Hull

V-shaped keel with longitudinal stringers Fiberglass hand laid molded hull Stringers with foam cored reinforcement Stringers bonded to hull encapsulated in several layers of glass cloth and resin Deck and superstructure with foam cored reinforcement under fiberglass layer Interior structural components all bonded to hull including bulkheads and frames Foam cored sandwich deck construction for strength Teak planks on main deck All stiffening ribs molded top-hat section channels with foam core Stainless steel portholes Teak swim platform Bottom paint w/anti osmosis treatment Hydraulic transom door w/lifting crane inside

Deck Hardware

Handrails stanchions, and fitting made of stainless steel 316 alloy Ropes & fender holder storage on forward deck Handrail 1-1/2", and stanchion in 1-1/4" s/s High-grade #316 stainless steel window frames Heavy duty stainless steel cleats and chocks Fiberglass bow pulpit with stainless steel integral roller for anchor chain (2) 200 lbs anchor Nilsson hydraulic windlass to suit the boat x 2 300 feet of anchor chain (2) in 5/8" diameter Chain stripper with chain stop Remote windlass operation from bridge High-pressure deck wash down system with outlets for fore, aft and FIB Dual chrome plated electrical horns Cover for front windows Helicopter deck hydraulic platform

Aft Deck

Two side stairways port and starboard from swim platform to aft deck Nilsson vertical capstan VC2200 24V chromed one each side for mooring Hydraulic stern crane Built-in shower with warm/cold water above the platform Hinged swim ladder Dinghy & Jet ski storage under aft deck Hydraulic transom door for storage of dinghy & crane etc. Aft deck "U" seats w/FRP Hi-Lo table Electric toilet for dinghy storage

Main Machinery

Twin Detroit DDEC 24V-71TA 1800 HP diesel engines Fresh-water cooled engine Triple Racor 1000fg fuel filters/water separator, each engine Stainless steel shafts 3-1/2" (4) Blades local bronze propellers Main and intermediate bronze steel struts Easily accessible shaft logs with bronze housing for packing gland HPS hydraulic bow thruster - 45hp

Steering System

Hydraulic steering easily adaptable autopilot Emergency tiller Stainless steel rudders Dual station power steering

Engine Room and Equipment

Well-planned engine room Fiberglass bonded to hull engine beds with engine load distributed on steel channels Working bench in engine room with toolbox Twin engine compartment blowers Water heaters for total 120gal (450 liters) High-volume water pressure pump, both AC & DC Holding tank for heads with indicator at helm station Fresh-water fitting for filling engine and generator expansion tanks Sound and heat insulated material - double layers Engine room AC lights Automatic fire extinguisher system Reverse cycle air conditioning system 180,000 BTU in total (chilled water) Fire extinguisher Fire Boy w/alarm (2) for engine room and portable 10 lbs fire extinguisher (8) Windshield wipers plus windshield washer system Washer / Dryer

Electrical Systems

Twin generators 25/30KW (110V/220V) w/sound shields Shore telephones inlets (2) Victron Skylla 24v/100amp battery charger Equipment indication panel (2) Searchlights 24v w/remote control "Tokai Sunshine" Round type TV antenna High-quality sockets and switches 110volt and 220volt electrical supply from generator shore Color coded wiring for easy identification Batteries – (4) 200AH for engine start, (6) 200AH for service Separate 120amp/hr for each generator starting Enclosed acid-proof fiberglass battery boxes with cover Main electric panel includes separate AC power control and AC circuit breaker panel 24volt DC monitoring and main circuit

breaker panel 110/220volt duplex receptacles located throughout including engine room Indirect lighting under valances in saloon, staterooms, pilot house and galley 24volt lights throughout AC/DC lights transformer Bonded electrical system w/ grounding plates (4) Tachometers (4) Engine oil pressure (4) Engine temperature (4) Transmission pressure

Navigation and Communication

Autopilot Depth sounder / speed log Furuno radar 72 nautical mile Furuno GPS w/plotter VHF both flybridge & pilothouse Chart plotter Weather fax SSB radio Elec. Water / fuel gauges Standard hailer dual station VDO rudder angle indicators Compass dual stations Complete VDO integrated instrument panel on both helm stations Intercom 10 stations

Plumbing

All copper water plumbing All copper fuel tubing All plumbing color coded FRP holding tank w/Y valves Elec. Bilge pump w/automatic switch at each compartment Manual bilge pumps and extra one in engine room Deck wash down system Bronze seacocks & thru-hull fittings Y-valve for dockside pump-out Macerator pumps forward and aft Sump pumps forward and aft Sea recovery 800 gals/day water maker (2) Hi-pressure F/w pumps

Crew Cabin

Walls and furniture and ceiling covered with wood and vinyl or similar Beds with mattresses Portholes w/curtain Car stereo with two speakers Ceiling lighting Vanity Wardrobe with shelves storage Electric Head Teak and holly cabin sole Shower room

Exclusions

Owner's personal belongings.

Disclaimer

The Company offers the details of this vessel or yacht in good faith but cannot guarantee or warrant the accuracy of this information nor warrant the condition of the vessel. A buyer should instruct his representatives, agents, or his surveyors, to investigate such details as the buyer desires validated. This vessel or yacht is offered subject to prior sale, price change, or withdrawal without notice.

PHOTOS

Profile



Aft Deck



Aft Deck



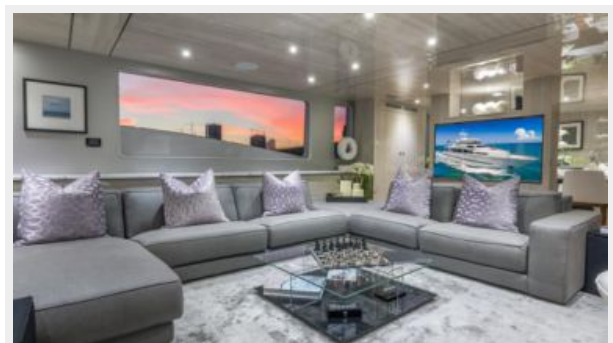
Aft Deck Dining



Main Salon



Main Salon



Main Salon Looking Aft



Dining



Pilothouse



Helm



Pilothouse



Master Stateroom



Master Stateroom



Master Bath



Sauna



VIP Stateroom



Guest Bath



Twin Stateroom 1



Stairs to Upper Deck



Lower Foyer



Flybridge



Sundeck



Flybridge



Flybridge Seating



Flybridge



Flybridge Jacuzzi



Jacuzzi



Side Deck



Stern / Toys



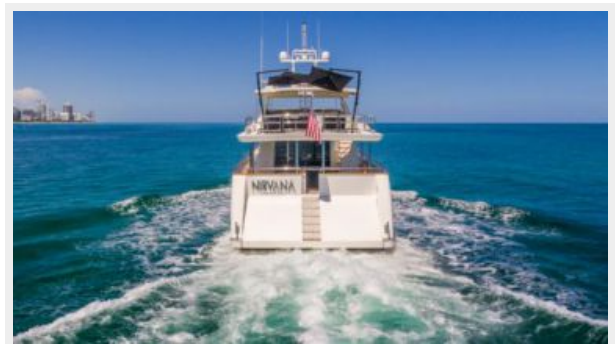
Aerial Overview



Bow



Stern



Aerial Port Profile



Aerial Starboard Profile



Starboard Profile



IMG_3330



IMG_3331



IMG_3334



IMG_3338



IMG_3340



CONTACTS

Andrey Shestakov, leading yacht broker of the sales department of Shestakov Yacht Sales Inc. Shestakov Yacht Sales Inc., the official representative of the Miami/Fort Lauderdale FL headquarters.

Contact details

Email: andrey@shestakovyachtsales.com

Web: shestakovyachtsales.com/en/

Telephones

USA: +1(954)274-4435

Office hours

Monday – Saturday: **9:00 - 21:00** EDT

Sunday: **closed**

Address



Harbour Towne Marina, 850 NE 3rd St,
STE 213, Dania, FL 33004